

Smashing Pumpkins - Muzzle

♩ = 85,000046

WinJammer Demo

WinJammer Demo

WinJammer Demo

WinJammer Demo

WinJammer Demo

WinJammer Demo

WinJammer Demo

WinJammer Demo

WinJammer Demo

WinJammer Demo

7

WinJammer Demo

WinJammer Demo

WinJammer Demo

WinJammer Demo

Detailed description: This system covers measures 7 and 8. The guitar staff shows a sequence of chords with fretting positions indicated by 'x' marks. The treble clef staff contains chords in G major and A major. The guitar TAB shows fret numbers for both strings (T and B). The bass clef staff provides a bass line for the chords.

9

WinJammer Demo

WinJammer Demo

WinJammer Demo

WinJammer Demo

Detailed description: This system covers measures 9 and 10. The guitar staff continues the chord sequence. The treble clef staff shows chords in G major and A major. The guitar TAB indicates fret numbers. The bass clef staff shows the bass line.

11

WinJammer Demo

WinJammer Demo

WinJammer Demo

WinJammer Demo

Detailed description: This system covers measures 11 and 12. The guitar staff shows the final chords of the sequence. The treble clef staff contains chords in G major and A major. The guitar TAB shows fret numbers. The bass clef staff provides the bass line.

13

WinJammer Demo

WinJammer Demo

WinJammer Demo

WinJammer Demo

Detailed description: This system covers measures 13, 14, and 15. The drum staff (top) shows a consistent pattern of snare and bass drum hits. The guitar staff (middle) features a melodic line with a key signature change to one sharp (F#) in measure 14. The bass staff (bottom) provides a steady accompaniment. A guitar tablature system is positioned between the guitar and bass staves, with 'T' for treble and 'B' for bass. The tablature includes fret numbers (0, 2, 3, 4) and rhythmic markings (3 for triplets).

16

WinJammer Demo

WinJammer Demo

WinJammer Demo

WinJammer Demo

Detailed description: This system covers measures 16 and 17. The drum staff continues the rhythmic pattern. The guitar staff shows a melodic line with a key signature change to two sharps (F# and C#) in measure 17. The bass staff provides accompaniment. The guitar tablature system is present, showing fret numbers and rhythmic markings.

18

WinJammer Demo

WinJammer Demo

WinJammer Demo

WinJammer Demo

Detailed description: This system covers measures 18 and 19. The drum staff shows a pattern of snare and bass drum hits. The guitar staff features a melodic line with a key signature change to one sharp (F#) in measure 19. The bass staff provides accompaniment. The guitar tablature system is present, showing fret numbers and rhythmic markings.

20

WinJammer Demo

Detailed description: This system covers measure 20. It consists of a single guitar staff with a melodic line and a key signature change to one sharp (F#).

27

WinJammer Demo

WinJammer Demo

WinJammer Demo

WinJammer Demo

Detailed description: This system covers measures 27 and 28. It features four staves: a drum staff with a simple pattern of snare and bass drum hits; a treble clef staff with a melody of eighth and quarter notes; a guitar staff with fret numbers (0, 2, 3, 4) and a tablature system with 'T' and 'B' lines; and a bass clef staff with a bass line of eighth and quarter notes. A key signature change to one sharp (F#) occurs at the start of measure 28.

29

WinJammer Demo

WinJammer Demo

WinJammer Demo

WinJammer Demo

Detailed description: This system covers measures 29 and 30. It features four staves: a drum staff with a simple pattern of snare and bass drum hits; a treble clef staff with a melody of eighth and quarter notes; a guitar staff with fret numbers (0, 2, 3, 4) and a tablature system with 'T' and 'B' lines; and a bass clef staff with a bass line of eighth and quarter notes. A key signature change to one sharp (F#) occurs at the start of measure 29.

31

WinJammer Demo

WinJammer Demo

WinJammer Demo

WinJammer Demo

Detailed description: This system covers measures 31 and 32. It features four staves: a drum staff with a simple pattern of snare and bass drum hits; a treble clef staff with a melody of eighth and quarter notes; a guitar staff with fret numbers (0, 2, 3, 4) and a tablature system with 'T' and 'B' lines; and a bass clef staff with a bass line of eighth and quarter notes. A key signature change to one sharp (F#) occurs at the start of measure 31.

34

WinJammer Demo

WinJammer Demo

WinJammer Demo

WinJammer Demo

36

WinJammer Demo

WinJammer Demo

WinJammer Demo

WinJammer Demo

♩ = 85,000046

3 6 3 6 6

5 6

8

11

14

18 3

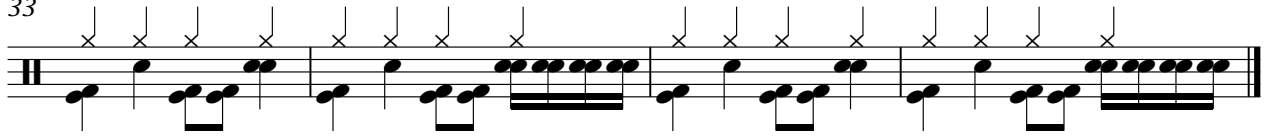
22 6 3 6 6

24 6

27

30

33



♩ = 85,000046

4

7

11

15

19

22

25

29

33

♩ = 85,000046

3 6

7

11

15

19 3 6

25

29

33