

Smashing Pumpkins - Perfect

♩ = 120,000000

Guitar-Billy

E																	
B																	
G																	
D																	
A	4	4	4	4	4	4	4	4	4	4	4	4	4	4	4	4	4
B	2	2	2	2	2	2	2	2	2	2	2	2	2	2	2	2	2
E																	
A																	

Drumz

3

Guitar-Billy

T																	
A																	
B	4	4	4	4	4	4	4	4	4	4	4	4	4	4	4	4	4
	2	2	2	2	2	2	2	2	2	2	2	2	2	2	2	2	2

Drumz

5

Guitar-James

Guitar-Billy

T	1	1	2	2	2	2	2	2	2	2	1	4	4	2	2	2	2	
A				3	3	3	3	3	3	3	4	3	3	6	6	1	1	1
B	4		4		4		1	1	1	1	1	4	4	4	4	4	4	4
							6				6			6	6			

Guitar-Fills

T	4	1	1	1	1	1	1	1	1	3	1	1	1	4	1	1	1
A																	
B	4															4	

Bass- D'arcy

8

Drumz

Guitar-James

Guitar-Billy

Guitar-Fills

Bass- D'arcy

8

Drumz

Guitar-James

Guitar-Billy

Guitar-Fills

Bass- D'arcy

10

Drumz

Guitar-James

Guitar-Billy

Guitar-Fills

Bass- D'arcy

10

Drumz

Guitar-James

Guitar-Billy

Guitar-Fills

Bass- D'arcy

12

Drumz

Guitar-James

Guitar-Billy

Guitar-Fills

Bass- D'arcy

14

Drumz

Guitar-James

Guitar-Billy

Guitar-Fills

Bass- D'arcy

16

Drumz

Guitar-James

Guitar-Billy

Guitar-Fills

Bass- D'arcy

1

T 2 1 4 4 2 2 2 | 2 2 2

A 1 1 1 1 1 1 1 | 1 1 1 1 1 1 1

B 3 4 3 3 6 6 4 4 4 | 4 4 4 4 4 4 4

6 6 6 6 6 6 6 6 6 | 6 6 6 6 6 6 6

6 6 6 6 6 6 6 6 6 | 6 6 6 6 6 6 6

T

A

B 6 6 6 | 6 6 6

6 6 6 | 6 6 6

Bass- D'arcy

18

Drumz

Guitar-James

Guitar-Billy

Guitar-Fills

Bass- D'arcy

1

T 2 1 4 4 2 2 2 | 2 2 2

A 1 1 1 1 1 1 1 | 1 1 1 1 1 1 1

B 3 4 3 3 6 6 4 4 4 | 4 4 4 4 4 4 4

6 6 6 6 6 6 6 6 6 | 6 6 6 6 6 6 6

6 6 6 6 6 6 6 6 6 | 6 6 6 6 6 6 6

T

A

B 6 6 6 | 6 6 6

6 6 6 | 6 6 6

Bass- D'arcy

20

Drumz

Guitar-James

Guitar-Billy

Guitar-Fills

Bass- D'arcy

Detailed description of the musical score for measures 20-21. The score is arranged in five systems. The first system is for the Drumz, showing a complex rhythmic pattern with various note values and rests. The second system is for Guitar-James, featuring a treble clef and a single note held across both measures. The third system is for Guitar-Billy, containing a guitar tablature with fret numbers (2, 4, 6) and string numbers (T, A, B). The fourth system is for Guitar-Fills, also containing a guitar tablature with fret numbers (6) and string numbers (T, A, B). The fifth system is for Bass- D'arcy, showing a bass clef and a simple melodic line. The key signature has one flat (Bb) and the time signature is 4/4.

22

Drumz

Guitar-James

Guitar-Billy

Guitar-Fills

Bass- D'arcy

Detailed description of the musical score for measures 22-23. The score is arranged in five systems. The first system is for the Drumz, showing a complex rhythmic pattern with various note values and rests. The second system is for Guitar-James, featuring a treble clef and a single note held across both measures. The third system is for Guitar-Billy, containing a guitar tablature with fret numbers (2, 3, 4, 6) and string numbers (T, A, B). The fourth system is for Guitar-Fills, also containing a guitar tablature with fret numbers (6) and string numbers (T, A, B). The fifth system is for Bass- D'arcy, showing a bass clef and a simple melodic line. The key signature has one flat (Bb) and the time signature is 4/4.

24

Drumz

Guitar-James

Guitar-Billy

Guitar-Fills

Bass- D'arcy

26

Drumz

Guitar-James

Guitar-Billy

Guitar-Fills

Bass- D'arcy

28

Drumz

Guitar-James

Guitar-Billy

Guitar-Fills

Bass- D'arcy

The score for measures 28-29 features a consistent drum pattern with snare and bass drum hits. Guitar-James plays sustained chords. Guitar-Billy's TAB shows a mix of power chords and single notes, with fret numbers 2, 4, 6, and 8. Guitar-Fills play a steady bass line with fret numbers 6 and 8. The bass line in D'arcy's part moves between notes with fret numbers 1 and 2.

30

Drumz

Guitar-James

Guitar-Billy

Guitar-Fills

Bass- D'arcy

The score for measures 30-31 continues the drum pattern. Guitar-James remains with sustained chords. Guitar-Billy's TAB introduces fret number 1 in the first measure of the second system. Guitar-Fills' bass line continues with fret numbers 6 and 8. The bass line in D'arcy's part continues with fret numbers 1 and 2.

32

Drumz

Guitar-James

Guitar-Billy

Guitar-Fills

Bass- D'arcy

34

Drumz

Guitar-James

Guitar-Billy

Guitar-Fills

Bass- D'arcy

36

Drumz

Guitar-James

Guitar-Billy

Guitar-Fills

Bass- D'arcy

2 1 4 4 2 2 2 2
1 1 1 1 1 1 1 1
3 4 3 3 6 6 4 4 4 4 3 3
6 6 6 6 6 6 6 6 6 6 6 6
2 2 2 2 2 2 2 2
3 5 5 5 6 4 2 2 2 2
6 6 6 6 6 6 6 6 6 6 6 6
6 6 6 6 6 6 6 6 6 6 6 6

38

Drumz

Guitar-James

Guitar-Billy

Guitar-Fills

Bass- D'arcy

2 1 4 4 2 2 2 2
1 1 1 1 1 1 1 1
3 4 3 3 6 6 4 4 4 4 3 3
6 6 6 6 6 6 6 6 6 6 6 6
2 2 2 2 2 2 2 2
3 5 5 5 6 4 2 2 2 2
6 6 6 6 6 6 6 6 6 6 6 6
6 6 6 6 6 6 6 6 6 6 6 6

40

Drumz

Guitar-James

Guitar-Billy

Guitar-Fills

Bass- D'arcy

42

Drumz

Guitar-James

Guitar-Billy

Guitar-Fills

Bass- D'arcy

44

Drumz

Guitar-James

Guitar-Billy

Guitar-Fills

Bass- D'arcy

46

Drumz

Guitar-James

Guitar-Billy

Guitar-Fills

Bass- D'arcy

48

Drumz

Guitar-James

Guitar-Billy

Guitar-Fills

Bass- D'arcy

50

Drumz

Guitar-James

Guitar-Billy

Guitar-Fills

Bass- D'arcy

52

Drumz

Guitar-James

Guitar-Billy

Guitar-Fills

Bass- D'arcy

55

Drumz

Guitar-James

Guitar-Billy

Guitar-Fills

Bass- D'arcy

58

Drumz

Guitar-James

Guitar-Billy

Guitar-Fills

Bass- D'arcy

60

Drumz

Guitar-James

Guitar-Billy

Guitar-Fills

Bass- D'arcy

62

Drumz

Guitar-James

Guitar-Billy

Guitar-Fills

Bass- D'arcy

64

Drumz

Guitar-James

Guitar-Billy

Guitar-Fills

Bass- D'arcy

66

Drumz

Guitar-James

Guitar-Billy

Guitar-Fills

Bass- D'arcy

68

Drumz

Guitar-James

Guitar-Billy

Guitar-Fills

Bass- D'arcy

70

Drumz

Guitar-James

Guitar-Billy

Guitar-Fills

Bass- D'arcy

72

Drumz

Guitar-James

Guitar-Billy

Guitar-Fills

Bass- D'arcy

74

Drumz

Guitar-James

Guitar-Billy

Guitar-Fills

Bass- D'arcy

76

Drumz

Guitar-James

Guitar-Billy

Guitar-Fills

Bass- D'arcy

78

Drumz

Guitar-James

Guitar-Billy

Guitar-Fills

Bass- D'arcy

The musical score for measures 78 and 79 consists of five staves. The Drumz staff shows a complex rhythmic pattern with various note values and rests. The Guitar-James staff features a melodic line with a key signature of one flat. The Guitar-Billy and Guitar-Fills staves provide guitar tablature with fret numbers (1-5) and string numbers (1-6). The Bass- D'arcy staff shows a bass line with a key signature change from one flat to one sharp between measures 78 and 79.

80

Drumz

Guitar-James

Guitar-Billy

Guitar-Fills

Bass- D'arcy

The musical score for measures 80 and 81 continues the arrangement. The Drumz staff maintains the rhythmic complexity. The Guitar-James staff shows a melodic progression. The Guitar-Billy and Guitar-Fills staves continue with their respective guitar parts, using fret numbers to indicate specific notes. The Bass- D'arcy staff provides a steady bass line.

81

Drumz

Guitar-James

Guitar-Billy

Guitar-Fills

Bass- D'arcy

82

Drumz

Guitar-James

Guitar-Billy

Guitar-Fills

Bass- D'arcy

84

Drumz

Guitar-James

Guitar-Billy

Guitar-Fills

Bass- D'arcy

86

Drumz

Guitar-James

Guitar-Billy

Guitar-Fills

Bass- D'arcy

88

Drumz

Guitar-James

Guitar-Billy

Guitar-Fills

Bass- D'arcy

89

Drumz

Guitar-James

Guitar-Billy

Guitar-Fills

Bass- D'arcy

90

Drumz

Guitar-James

Guitar-Billy

Guitar-Fills

Bass- D'arcy

92

Drumz

Guitar-James

Guitar-Billy

Guitar-Fills

Bass- D'arcy

94

Drumz

Guitar-James

Guitar-Billy

Guitar-Fills

Bass- D'arcy

96

Drumz

Guitar-James

Guitar-Billy

Guitar-Fills

Bass- D'arcy

Drumz Smashing Pumpkins - Perfect

♩ = 120,000000

2

6

9

12

15

18

21

24

27

30

The image displays a drum score for the song 'Perfect' by Smashing Pumpkins. It begins with a tempo marking of 120,000000 and a time signature of 4/4. A '2' is placed above the first measure. The notation consists of ten staves, each representing a measure of music. Each staff contains a series of 'x' marks indicating drum hits, with some marks having asterisks above them. The notation is organized into measures, with bar lines separating them. The first measure is marked with a '2' above it. The subsequent measures are numbered 6, 9, 12, 15, 18, 21, 24, 27, and 30. The notation shows a complex rhythmic pattern, including various drum hits and rests.

©1998 Dave Giochetto

V.S.

Drumz

33

33

36

36

39

39

42

42

45

45

48

48

51

51

54

54

57

57

60

60

Drumz

63

Musical notation for measure 63, featuring a drum staff with 'x' marks and a guitar staff with notes.

66

Musical notation for measure 66, featuring a drum staff with 'x' marks and a guitar staff with notes.

69

Musical notation for measure 69, featuring a drum staff with 'x' marks and a guitar staff with notes.

72

Musical notation for measure 72, featuring a drum staff with 'x' marks and a guitar staff with notes.

75

Musical notation for measure 75, featuring a drum staff with 'x' marks and a guitar staff with notes.

78

Musical notation for measure 78, featuring a drum staff with 'x' marks and a guitar staff with notes.

81

Musical notation for measure 81, featuring a drum staff with 'x' marks and a guitar staff with notes.

84

Musical notation for measure 84, featuring a drum staff with 'x' marks and a guitar staff with notes.

87

Musical notation for measure 87, featuring a drum staff with 'x' marks and a guitar staff with notes.

90

Musical notation for measure 90, featuring a drum staff with 'x' marks and a guitar staff with notes.

V.S.

4

Drumz

93

Musical notation for measures 93 and 94. The notation consists of two staves. The top staff is a guitar tab with six lines, showing fret numbers and rhythmic markings. The bottom staff is a standard musical staff with a treble clef, showing a melody of eighth and quarter notes. Measure 93 starts with a complex guitar chord marked with 'x's and a rhythmic pattern. Measure 94 continues the guitar pattern and the melody.

95

Musical notation for measures 95 and 96. The notation consists of two staves. The top staff is a guitar tab with six lines, showing fret numbers and rhythmic markings. The bottom staff is a standard musical staff with a treble clef, showing a melody of eighth and quarter notes. Measure 95 continues the guitar pattern and the melody. Measure 96 ends with a final guitar chord marked with 'x's and a rhythmic pattern, followed by a double bar line.

Guitar-James Smashing Pumpkins - Perfect

♩ = 120,000000

4

8

14

23

32

38

42

48

57

66

Detailed description: The musical score is written for guitar in 4/4 time. It begins with a tempo marking of 120,000,000 and a 4-measure rest. The first system (measures 1-4) shows a 4-measure rest in the treble clef and a rhythmic pattern in the bass clef. The second system (measures 5-8) continues the bass clef pattern. The third system (measures 9-14) features a melodic line in the treble clef with slurs. The fourth system (measures 15-23) continues the treble clef melody. The fifth system (measures 24-32) shows the treble clef melody and a new bass clef pattern. The sixth system (measures 33-38) continues the bass clef pattern. The seventh system (measures 39-42) continues the bass clef pattern. The eighth system (measures 43-48) shows the treble clef melody and a new bass clef pattern. The ninth system (measures 49-57) continues the treble clef melody. The tenth system (measures 58-66) shows the treble clef melody and a new bass clef pattern.

©1998 Dave Giochetto

V.S.

73



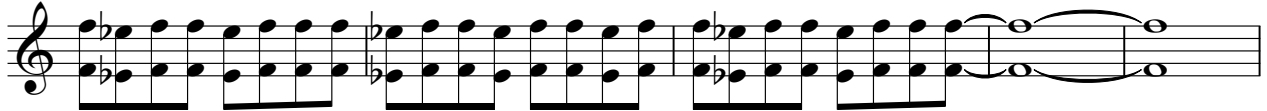
77



81



86



91



95



Smashing Pumpkins - Perfect

Guitar-Billy

♩ = 120,000000

3

E																	
B																	
G																	
D																	
A	4	4	4	4	4	4	4	4	4	4	4	4	4	4	4	4	4
E	2	2	2	2	2	2	2	2	2	2	2	2	2	2	2	2	2

6

T																	
A	4	4	4	4	4	4	4	4	4	4	4	4	4	4	4	4	4
B	2	2	2	2	2	2	2	2	2	2	2	2	2	2	2	2	2

10

T	2	1	1	4	4	2	2	2	2	2	2	2	2	2	2	2	2
A	3	4	3	3	6	6	1	1	1	1	1	1	1	1	1	1	1
B	1	6	1	1	1	1	4	4	4	4	4	4	4	4	4	4	4

13

T	2	1	1	4	4	2	2	2	2	2	2	2	2	2	2	2	2
A	3	4	3	3	6	6	1	1	1	1	1	1	1	1	1	1	1
B	1	6	1	1	1	1	4	4	4	4	4	4	4	4	4	4	4

16

T	2	1	1	2	2	2	2	2	2	2	2	2	2	2	2	2	2
A	3	4	3	3	6	6	3	4	3	3	6	6	6	6	6	6	6
B	1	6	1	1	1	1	4	4	4	4	4	4	4	4	4	4	4

19

T	2	1	1	4	4	2	2	2	2	2	2	2	2	2	2	2	2
A	3	4	3	3	6	6	4	4	4	4	4	4	4	4	4	4	4
B	6	6	6	6	6	6	6	6	6	6	6	6	6	6	6	6	6

22

T	2	1	1	2	2	2	2	2	2	2	2	2	2	2	2	2	2
A	3	4	3	3	6	6	4	4	4	4	4	4	4	4	4	4	4
B	4	6	4	4	4	4	4	4	4	4	4	4	4	4	4	4	4

25

T	2	1	1	4	4	2	2	2	2	2	2	2	2	2	2	2	2
A	3	4	3	3	6	6	4	4	4	4	4	4	4	4	4	4	4
B	6	6	6	6	6	6	6	6	6	6	6	6	6	6	6	6	6

28

T	2	1	1	2	2	2	2	2	2	2	2	2	2	2	2	2	2
A	3	4	3	3	6	6	4	4	4	4	4	4	4	4	4	4	4
B	4	6	4	4	4	4	4	4	4	4	4	4	4	4	4	4	4

31

T	2	1	1	2	2	2	2	2	2	2	2	2	2	2	2	2	2
A	3	4	3	3	6	6	4	4	4	4	4	4	4	4	4	4	4
B	6	6	6	6	6	6	6	6	6	6	6	6	6	6	6	6	6

31

T	4	4	4	4	4	4	4	1	4	4	2	2	2	2	2
A	6	6	6	6	6	6	6	1	1	1	1	1	1	1	1
B	4	6	6	8	6	8	8	4	3	3	6	6	4	4	4
	6	6	6	6	6	6	6	6	6	6	6	6	6	6	6

34

T	2	1	4	4	2	2	2	2	2	2	1	4	4	2
A	1	1	3	3	6	6	1	1	1	1	1	1	1	1
B	6	6	6	6	6	6	6	4	4	4	3	3	3	3
	6	6	6	6	6	6	6	6	6	6	6	6	6	6

37

T	2	1	2	2	2	2	1	4	4	2	2	2	2	2
A	1	1	1	1	1	1	1	1	1	1	1	1	1	1
B	4	4	3	3	4	4	3	3	6	6	4	4	4	4
	6	6	6	6	6	6	6	6	6	6	6	6	6	6

40

T	2	1	4	4	2	2	2	2	2	1	4	4	2
A	1	1	3	3	6	6	1	1	1	1	1	1	1
B	6	6	6	6	6	6	6	4	4	4	3	3	3
	6	6	6	6	6	6	6	6	6	6	6	6	6

43

T	2	1	2	2	2	2	1	4	4	2	2	2	2
A	1	1	1	1	1	1	1	1	1	1	1	1	1
B	4	4	3	3	4	4	3	3	6	6	4	4	4
	6	6	6	6	6	6	6	6	6	6	6	6	6

46

T	2	2	2	2	2	4	4	4	4	4	4	4	4	2
A	4	4	4	4	4	6	6	6	6	6	6	6	6	1
B	4	1	6	1	6	6	6	6	6	6	6	6	6	6
	6	6	6	6	6	6	6	6	6	6	6	6	6	6

49

T	4	4	4	4	4	4	4	1	4	4	2	4	4	4	4
A	6	6	6	6	6	6	6	1	1	1	1	6	6	6	6
B	4	6	6	8	6	8	8	4	3	3	6	6	4	4	4
	6	6	6	6	6	6	6	6	6	6	6	6	6	6	6

52

T	4	4	4	4	2	2	2	2	2	2	2	2	2	2	2
A	8	4	3	3	6	6	1	1	1	1	1	1	1	1	1
B	6	6	6	6	6	6	6	4	4	4	4	4	4	4	4
	6	6	6	6	6	6	6	6	6	6	6	6	6	6	6

58

T	2	1	4	4	2	2	2	2	2	1	4	4	2
A	1	1	3	3	6	6	1	1	1	1	1	1	1
B	6	6	6	6	6	6	6	4	4	4	3	3	3
	6	6	6	6	6	6	6	6	6	6	6	6	6

61

T	2	1	2	2	2	2	1	4	4	2	2	2	2	2
A	1	1	1	1	1	1	1	1	1	1	1	1	1	1
B	4	4	3	3	4	4	3	3	6	6	4	4	4	4
	6	6	6	6	6	6	6	6	6	6	6	6	6	6

Guitar-Billy

T	2	2	2	2	2	2	1	4	4	2	2	2	2	2	2	2			
A	1	1	1	1	1	1	1	1	1	1	1	1	1	1	1	1			
B	4			3	3	3	3	4	3	3	6	6	4	4	4	4	4	4	4
	6			6	6	6	6	6	6	6	6	6	6	6	6	6	6	6	6

Smashing Pumpkins - Perfect

Guitar-Fills

♩ = 120,000000

4

9

12

19

23

28

31

35

39

43

51

Bass- D'arcy Smashing Pumpkins - Perfect

♩ = 120,000000

4



8



12



16



20



24



29



33



37



41



85



89



93



95

