

So Pra Contrariar - A Rede

0.0"
1.1,00
A rede

♩ = 88,000023

Musical score for the first system of 'So Pra Contrariar - A Rede'. The score is in 4/4 time and consists of seven staves: Flute, Percussion, Jazz Guitar, Jazz Guitar, Kora, Kora, and 5-string Electric Bass. All staves are currently empty, with a small horizontal line indicating the start of the music.

Musical score for the second system of 'So Pra Contrariar - A Rede'. The score is in 4/4 time and consists of four staves: Fl. (Flute), Perc. (Percussion), J. Gtr. (Jazz Guitar), and E. Bass (5-string Electric Bass). The Fl. staff has a measure rest followed by four measures of music. The Perc. staff has a measure rest followed by four measures of music. The J. Gtr. staff has a measure rest followed by four measures of music, each marked with a '6' below it. The E. Bass staff has a measure rest followed by four measures of music.

studiovirtual@ig.com.br

3

Fl.

Perc.

J. Gtr.

J. Gtr.

Kora

E. Bass

6 3 3

3 6

www.studiovirtualmidi.cjb.net

Tel:(31)37544

4

Fl.

Perc.

J. Gtr.

J. Gtr.

Kora

E. Bass

3 3

5

Fl.

Perc.

J. Gtr.

J. Gtr.

Kora

E. Bass

6

6

3

Detailed description: This system contains measures 5 and 6. The Flute part has a melodic line with a sixteenth-note triplet in measure 6. The Percussion part features a complex rhythmic pattern with various note heads. The J. Gtr. part has a rhythmic accompaniment with a sixteenth-note triplet in measure 6. The second J. Gtr. part has a melodic line with a sixteenth-note triplet in measure 6. The Kora part has a sustained chord in measure 5 and a melodic line in measure 6. The E. Bass part has a melodic line with a triplet in measure 6.

7

Perc.

J. Gtr.

Kora

E. Bass

Detailed description: This system contains measures 7 and 8. The Percussion part continues with its complex rhythmic pattern. The J. Gtr. part has a rhythmic accompaniment. The Kora part has a sustained chord in measure 7 and a melodic line in measure 8. The E. Bass part has a melodic line.

8

Perc.

J. Gtr.

Kora

E. Bass

Detailed description: This system contains measures 9 and 10. The Percussion part continues with its complex rhythmic pattern. The J. Gtr. part has a rhythmic accompaniment. The Kora part has a sustained chord in measure 9 and a melodic line in measure 10. The E. Bass part has a melodic line.

9

Perc. J. Gtr. Kora E. Bass

This system covers measures 9 through 12. The Percussion part features a consistent rhythmic pattern of eighth notes with 'x' marks above them. The J. Gtr. part has a complex, multi-measure rhythm with various chordal textures. The Kora part consists of sustained chords. The E. Bass part provides a steady bass line with some melodic movement.

10

Perc. J. Gtr. Kora E. Bass

This system covers measures 13 through 16. The Percussion part continues with the same rhythmic pattern. The J. Gtr. part maintains its complex rhythmic structure. The Kora part has sustained chords. The E. Bass part continues its bass line.

11

Perc. J. Gtr. Kora E. Bass

This system covers measures 17 through 20. The Percussion part continues with the same rhythmic pattern. The J. Gtr. part maintains its complex rhythmic structure. The Kora part has sustained chords. The E. Bass part continues its bass line.

12

Perc. J. Gtr. Kora E. Bass

This system covers measures 12 to 15. The Percussion part features a consistent rhythmic pattern of eighth notes with 'x' marks above them. The J. Gtr. part has a complex, multi-measure rhythm with various chordal textures. The Kora part provides harmonic support with sustained chords, including a change to a lower register in measure 14. The E. Bass part plays a steady eighth-note line.

13

Perc. J. Gtr. J. Gtr. Kora E. Bass

This system covers measures 16 to 19. The Percussion part continues its rhythmic pattern. The J. Gtr. part has two staves, with the upper staff playing a complex rhythm and the lower staff playing a simpler eighth-note line. The Kora part has sustained chords, with a change in measure 17. The E. Bass part continues its eighth-note line.

14

Perc. J. Gtr. Kora E. Bass

This system covers measures 20 to 23. The Percussion part continues its rhythmic pattern. The J. Gtr. part has a complex, multi-measure rhythm. The Kora part has sustained chords. The E. Bass part continues its eighth-note line.

15

Perc. J. Gtr. Kora E. Bass

This system covers measures 15 and 16. The Percussion part features a complex rhythmic pattern with various note values and rests. The J. Gtr. part consists of a series of chords and single notes, with some measures containing rests. The Kora part has a few chords and rests. The E. Bass part has a melodic line with eighth and quarter notes.

16

Perc. J. Gtr. Kora E. Bass

This system covers measures 17 and 18. The Percussion part continues with a similar rhythmic pattern. The J. Gtr. part has a mix of chords and single notes. The Kora part has a few chords and rests. The E. Bass part has a melodic line with eighth and quarter notes.

17

Perc. J. Gtr. Kora E. Bass

This system covers measures 19 and 20. The Percussion part continues with a similar rhythmic pattern. The J. Gtr. part has a mix of chords and single notes. The Kora part has a few chords and rests. The E. Bass part has a melodic line with eighth and quarter notes.

18

Perc. J. Gtr. Kora E. Bass

This system covers measures 18 and 19. The Percussion part features a complex rhythmic pattern with various accents and rests. The J. Gtr. part consists of a series of chords and single notes, with some measures containing rests. The Kora part has a steady accompaniment of chords. The E. Bass part provides a melodic line with eighth and quarter notes.

19

Perc. J. Gtr. Kora E. Bass

This system covers measures 20 and 21. The Percussion part continues with its rhythmic pattern. The J. Gtr. part shows a change in chord voicings. The Kora part maintains its accompaniment. The E. Bass part continues its melodic line, with some notes marked with a flat.

20

Perc. J. Gtr. Kora E. Bass

This system covers measures 22 and 23. The Percussion part remains consistent. The J. Gtr. part includes a measure with a double flat (bb) indicating a key change or modulation. The Kora part has a corresponding change in chord voicing. The E. Bass part continues with its melodic line, incorporating a double flat.

21

Perc.

J. Gtr.

Kora

E. Bass

Detailed description: This system covers measures 21 to 24. The Percussion part features a complex rhythmic pattern with various note heads and stems. The J. Gtr. part has a similar rhythmic structure with some chordal textures. The Kora part consists of sustained chords, with a change in harmony at measure 23. The E. Bass part provides a melodic line with eighth and quarter notes.

22

Perc.

J. Gtr.

Kora

E. Bass

Detailed description: This system covers measures 25 to 28. The Percussion part continues with its intricate rhythmic pattern. The J. Gtr. part maintains its rhythmic complexity. The Kora part remains with sustained chords, showing a shift in the lower register. The E. Bass part continues its melodic progression.

23

Perc.

J. Gtr.

Kora

E. Bass

Detailed description: This system covers measures 29 to 32. The Percussion part's pattern remains consistent. The J. Gtr. part shows some variation in its rhythmic phrasing. The Kora part has a change in chord structure at measure 31. The E. Bass part concludes its melodic line in this system.

24

Perc. J. Gtr. Kora E. Bass

This system covers measures 24 and 25. The Percussion part features a complex rhythmic pattern with 'x' marks above the staff. The first J. Gtr. part has a melodic line with a 7th fret barre. The second J. Gtr. part is mostly silent with some notes in measure 25. The Kora part has a steady accompaniment. The E. Bass part has a simple bass line.

25

Perc. J. Gtr. J. Gtr. Kora E. Bass

This system covers measures 26 and 27. The Percussion part continues with its rhythmic pattern. The first J. Gtr. part has a melodic line with a 7th fret barre. The second J. Gtr. part has a melodic line starting in measure 27. The Kora part has a steady accompaniment. The E. Bass part has a simple bass line.

26

Perc. J. Gtr. J. Gtr. Kora E. Bass

This system covers measures 28 and 29. The Percussion part continues with its rhythmic pattern. The first J. Gtr. part has a melodic line with a 7th fret barre. The second J. Gtr. part has a melodic line starting in measure 29. The Kora part has a steady accompaniment. The E. Bass part has a simple bass line.

27

Perc. J. Gtr. Kora E. Bass

Detailed description: This system covers measures 27 and 28. The Percussion part features a complex rhythmic pattern with many 'x' marks above the staff. The J. Gtr. part has a melodic line with a triplet in measure 28. The Kora part consists of chords and rests. The E. Bass part has a steady eighth-note bass line.

29

Perc. J. Gtr. Kora E. Bass

Detailed description: This system covers measures 29 and 30. The Percussion part continues with its complex rhythmic pattern. The J. Gtr. part has a melodic line with a triplet in measure 30. The Kora part consists of chords and rests. The E. Bass part has a steady eighth-note bass line.

31

Perc. J. Gtr. Kora E. Bass

Detailed description: This system covers measures 31 and 32. The Percussion part continues with its complex rhythmic pattern. The J. Gtr. part has a melodic line with a triplet in measure 32. The Kora part consists of chords and rests. The E. Bass part has a steady eighth-note bass line.

32

Perc. J. Gtr. Kora E. Bass

Detailed description: This system covers measures 32 to 35. The Percussion part features a complex rhythmic pattern with various note heads and rests. The J. Gtr. part has a melodic line with many accidentals and rests. The Kora part consists of a few chords with accidentals. The E. Bass part has a steady bass line with some rests.

33

Perc. J. Gtr. Kora E. Bass

Detailed description: This system covers measures 36 to 39. The Percussion part continues with its complex rhythmic pattern. The J. Gtr. part has a melodic line with many accidentals and rests. The Kora part consists of a few chords with accidentals. The E. Bass part has a steady bass line with some rests.

34

Perc. J. Gtr. Kora E. Bass

Detailed description: This system covers measures 40 to 43. The Percussion part continues with its complex rhythmic pattern. The J. Gtr. part has a melodic line with many accidentals and rests. The Kora part consists of a few chords with accidentals. The E. Bass part has a steady bass line with some rests.

35

Perc.

J. Gtr.

Kora

E. Bass

Detailed description: This system covers measures 35 and 36. The Percussion part features a complex rhythmic pattern with accents and slurs. The J. Gtr. part has a melodic line with slurs and accents. The Kora part consists of a steady accompaniment. The E. Bass part provides a bass line with slurs and accents.

36

Perc.

J. Gtr.

Kora

E. Bass

Detailed description: This system covers measures 36 and 37. The Percussion part continues with its rhythmic pattern. The J. Gtr. part has a melodic line with slurs and accents. The Kora part consists of a steady accompaniment. The E. Bass part provides a bass line with slurs and accents.

37

Fl.

Perc.

J. Gtr.

J. Gtr.

Kora

E. Bass

6 6 6 6

Detailed description: This system covers measures 37, 38, 39, and 40. The Fl. part has a melodic line with slurs and accents. The Percussion part continues with its rhythmic pattern. The J. Gtr. part has a melodic line with slurs and accents. The J. Gtr. part has a bass line with slurs and accents. The Kora part consists of a steady accompaniment. The E. Bass part provides a bass line with slurs and accents. The number '6' is written below the J. Gtr. part in measures 38, 39, and 40.

38

Fl.

Perc.

J. Gtr.

J. Gtr.

Kora

E. Bass

40

Perc.

J. Gtr.

Kora

Kora

E. Bass

41

Perc. J. Gtr. Kora E. Bass

This system contains measures 41 and 42. The Percussion part features a complex rhythmic pattern with various accents and rests. The J. Gtr. part consists of a series of chords and single notes, some with grace notes. The Kora part has a steady accompaniment of chords. The E. Bass part provides a melodic line with eighth and quarter notes.

42

Perc. J. Gtr. Kora Kora E. Bass

This system contains measures 43 and 44. The Percussion part continues with its rhythmic pattern. The J. Gtr. part has more complex chordal structures. The Kora part has two staves; the upper one plays chords, and the lower one plays a melodic line. The E. Bass part continues its melodic line.

43

Perc. J. Gtr. Kora Kora E. Bass

This system contains measures 45 and 46. The Percussion part maintains its rhythmic pattern. The J. Gtr. part features a mix of chords and single notes. The Kora part has two staves; the upper one plays chords, and the lower one plays a melodic line. The E. Bass part continues its melodic line.

44

Perc.

J. Gtr.

Kora

Kora

E. Bass

45

Perc.

J. Gtr.

Kora

Kora

E. Bass

46

Perc.

J. Gtr.

J. Gtr.

Kora

Kora

E. Bass

47

Perc.

J. Gtr.

Kora

Kora

E. Bass

48

Perc. J. Gtr. Kora Kora E. Bass

This system covers measures 48 and 49. The Percussion part features a complex rhythmic pattern with various accents and rests. The J. Gtr. part consists of a series of chords with some melodic movement. The Kora parts are primarily sustained chords, with the lower Kora part showing some melodic activity in measure 49. The E. Bass part provides a steady bass line with some chromatic movement.

49

Perc. J. Gtr. Kora E. Bass

This system covers measures 49 and 50. The Percussion part continues with its rhythmic pattern. The J. Gtr. part has a similar chordal structure to the previous system. The Kora parts remain mostly sustained, with the lower Kora part showing some melodic lines. The E. Bass part continues its bass line.

50

Perc. J. Gtr. Kora Kora E. Bass

This system covers measures 50 and 51. The Percussion part maintains its rhythmic pattern. The J. Gtr. part shows some melodic development within the chordal framework. The Kora parts continue with sustained chords and some melodic lines. The E. Bass part concludes the system with a final bass line.

51

Perc.

J. Gtr.

Kora

Kora

E. Bass

52

Perc.

J. Gtr.

Kora

E. Bass

53

Perc.

J. Gtr.

Kora

E. Bass

54

Perc. J. Gtr. Kora Kora E. Bass

This system contains measures 54 and 55. The Percussion part features a complex rhythmic pattern with various note heads and stems. The J. Gtr. part has a similar rhythmic pattern with some chordal textures. The Kora part consists of two staves; the upper staff has a sustained chord, and the lower staff has a melodic line. The E. Bass part has a melodic line with some rests.

55

Perc. J. Gtr. Kora Kora E. Bass

This system contains measures 56 and 57. The Percussion part continues with its rhythmic pattern. The J. Gtr. part has a similar rhythmic pattern. The Kora part consists of two staves; the upper staff has a sustained chord, and the lower staff has a melodic line. The E. Bass part has a melodic line with some rests.

56

Perc. J. Gtr. Kora Kora E. Bass

This system contains measures 58 and 59. The Percussion part continues with its rhythmic pattern. The J. Gtr. part has a similar rhythmic pattern. The Kora part consists of two staves; the upper staff has a sustained chord, and the lower staff has a melodic line. The E. Bass part has a melodic line with some rests.

57

Perc. J. Gtr. Kora E. Bass

This system covers measures 57 and 58. The Percussion part features a complex rhythmic pattern with 'x' marks above the staff. The J. Gtr. part has a melodic line with many accidentals and rests. The Kora part consists of a single chord in measure 57 and a few notes in measure 58. The E. Bass part has a steady bass line.

58

Perc. J. Gtr. Kora E. Bass

This system covers measures 58 and 59. The Percussion part continues with its rhythmic pattern. The J. Gtr. part continues with its melodic line. The Kora part has two staves; the top one has a chord in measure 58, and the bottom one has a melodic line with a triplet in measure 59. The E. Bass part continues with its bass line.

59

Perc. J. Gtr. Kora E. Bass

This system covers measures 59 and 60. The Percussion part continues with its rhythmic pattern. The J. Gtr. part continues with its melodic line. The Kora part has two staves; the top one has a chord in measure 59, and the bottom one has a few notes in measure 59. The E. Bass part continues with its bass line.

60

Perc. J. Gtr. Kora E. Bass

This system contains measures 60 and 61. The Percussion part features a complex rhythmic pattern with many 'x' marks above the staff. The J. Gtr. part has a melodic line with many '7' marks below the staff. The Kora part has a melodic line with '7' marks. The E. Bass part has a melodic line with '7' marks.

62

Perc. J. Gtr. Kora Kora E. Bass

This system contains measures 62 and 63. The Percussion part has a rhythmic pattern with 'x' marks. The J. Gtr. part has a melodic line with '7' marks. The Kora part has a melodic line with '7' marks. The E. Bass part has a melodic line with '7' marks.

63

Perc. J. Gtr. Kora Kora E. Bass

This system contains measures 63 and 64. The Percussion part has a rhythmic pattern with 'x' marks. The J. Gtr. part has a melodic line with '7' marks. The Kora part has a melodic line with '7' marks. The E. Bass part has a melodic line with '7' marks.

64

Perc.

J. Gtr.

Kora

E. Bass

Detailed description: This system covers measures 64 and 65. The Percussion part features a complex rhythmic pattern with various note heads and stems. The J. Gtr. part has a melodic line with many accidentals and rests. The Kora part consists of block chords, with a change in the 6th measure. The E. Bass part has a steady bass line with some chromatic movement.

65

Perc.

J. Gtr.

Kora

E. Bass

Detailed description: This system covers measures 66 and 67. The Percussion part continues with its rhythmic pattern. The J. Gtr. part has a melodic line with many accidentals and rests. The Kora part consists of block chords, with a change in the 6th measure. The E. Bass part has a steady bass line with some chromatic movement.

66

Perc.

J. Gtr.

Kora

E. Bass

Detailed description: This system covers measures 68 and 69. The Percussion part continues with its rhythmic pattern. The J. Gtr. part has a melodic line with many accidentals and rests. The Kora part consists of block chords, with a change in the 6th measure. The E. Bass part has a steady bass line with some chromatic movement.

67

Perc. J. Gtr. Kora E. Bass

This system covers measures 67 to 70. The Percussion part features a consistent rhythmic pattern of eighth notes with 'x' marks above them. The J. Gtr. part has a complex, multi-measure rhythm with many beamed notes and rests. The Kora part consists of a few chords, with a change in key signature from two sharps to one sharp and one flat at the start of measure 70. The E. Bass part provides a steady bass line with eighth and quarter notes.

68

Perc. J. Gtr. Kora E. Bass

This system covers measures 71 to 74. The Percussion part continues with the same eighth-note pattern. The J. Gtr. part maintains its complex rhythmic structure. The Kora part has a few chords, with a change in key signature from one sharp and one flat to one sharp at the start of measure 74. The E. Bass part continues with a steady bass line.

69

Perc. J. Gtr. Kora E. Bass

This system covers measures 75 to 78. The Percussion part continues with the same eighth-note pattern. The J. Gtr. part maintains its complex rhythmic structure. The Kora part has a few chords, with a change in key signature from one sharp to one flat at the start of measure 78. The E. Bass part continues with a steady bass line.

70

Perc. J. Gtr. Kora Kora E. Bass

This system covers measures 70, 71, and 72. The Percussion part features a complex rhythmic pattern with 'x' marks above the staff. The J. Gtr. part has a melodic line with a slash indicating a guitar-specific technique. The two Kora parts play chords and melodic fragments. The E. Bass part provides a steady bass line.

71

Perc. J. Gtr. Kora Kora E. Bass

This system covers measures 71 and 72. The Percussion part continues with its rhythmic pattern. The J. Gtr. part has a slash, indicating it is silent. The Kora parts are also silent, with only a few notes visible in the lower Kora staff. The E. Bass part is silent.

73

Perc.

This system covers measure 73. Only the Percussion part is shown, continuing its rhythmic pattern.

74

Perc. Kora E. Bass

This system covers measure 74. The Percussion part has a slash. The Kora part features a melodic line with triplets (marked '3') and a sextuplet (marked '6'). The E. Bass part has a few notes.

75

Perc. J. Gtr. J. Gtr. Kora Kora E. Bass

Detailed description: This system of musical notation covers measures 75 through 78. It features six staves: Percussion (Perc.), two acoustic guitar parts (J. Gtr.), two Kora parts, and an electric bass (E. Bass). The Percussion part uses a snare drum and a conga, with 'x' marks above the staff indicating specific rhythmic patterns. The first J. Gtr. part has a treble clef and a key signature of one sharp (F#), playing a complex rhythmic pattern with many beamed notes. The second J. Gtr. part is mostly silent, with a few notes in the later measures. The Kora parts are in the same key signature; the upper Kora part has a few notes, while the lower Kora part has a more active line. The E. Bass part is in the bass clef and plays a steady, rhythmic line.

76

Perc. J. Gtr. Kora Kora E. Bass

Detailed description: This system of musical notation covers measures 79 through 82. It features five staves: Percussion (Perc.), two acoustic guitar parts (J. Gtr.), two Kora parts, and an electric bass (E. Bass). The Percussion part continues with the same rhythmic patterns as in the previous system. The first J. Gtr. part continues its complex rhythmic pattern. The second J. Gtr. part remains mostly silent. The Kora parts continue their respective lines, with the lower Kora part showing more activity. The E. Bass part continues its rhythmic line.

77

Perc.

J. Gtr.

Kora

Kora

E. Bass

78

Perc.

J. Gtr.

Kora

Kora

E. Bass

79

Perc.

J. Gtr.

Kora

Kora

E. Bass

80

Perc.

J. Gtr.

Kora

Kora

E. Bass

Flute

So Pra Contrariar - A Rede

♩ = 88,000023

6 **30**

38 **43**

So Pra Contrariar - A Rede

Percussion

♩ = 88,000023

The image displays a percussion score for the piece 'So Pra Contrariar - A Rede'. The score is written in 4/4 time and begins with a tempo marking of ♩ = 88,000023. The notation is organized into ten systems, each consisting of two staves. The upper staff of each system contains rhythmic patterns represented by 'x' marks, indicating specific percussion hits. The lower staff contains a melodic line with notes and stems, often featuring beamed eighth notes. The systems are numbered 4, 6, 8, 10, 12, 14, 16, 18, and 20, indicating the measure number. The notation is dense and complex, typical of a detailed percussion score.

V.S.

Percussion

22

24

26

28

30

32

34

36

38

40

Percussion

42

44

46

48

50

52

54

56

58

60

V.S.

Percussion

This musical score for Percussion consists of ten systems of staves, numbered 62 through 80. Each system contains two staves: a top staff with rhythmic notation (crosses and beams) and a bottom staff with melodic notation (notes and stems). The notation is dense and complex, featuring many beamed notes and rests. Measure 74 includes a circled 'x' symbol above the staff and two triplets of notes in the bottom staff. Measure 80 features a circled 'x' symbol above the staff and a large slur over the notes in the bottom staff.

So Pra Contrariar - A Rede

♩ = 88,000023

2

5

7

9

11

13

15

17

19

21

Detailed description: This is a jazz guitar score for the piece 'So Pra Contrariar - A Rede'. The music is written in 4/4 time with a tempo of 88,000023. The score consists of ten staves of music, each starting with a measure number (2, 5, 7, 9, 11, 13, 15, 17, 19, 21). The key signature is one sharp (F#), and the time signature is 4/4. The music features a complex rhythmic pattern of eighth and sixteenth notes, often beamed together. There are several instances of triplets and slurs. The notation includes various accidentals (sharps, flats, naturals) and dynamic markings. The overall style is characteristic of modern jazz guitar.

Jazz Guitar

23

25

27

29

31

33

35

37

40

42

Jazz Guitar

3

44

46

48

50

52

54

56

58

60

63

V.S.

Jazz Guitar

65

67

69

71

76

78

80

So Pra Contrariar - A Rede

♩ = 88,000023

The image shows a guitar tab for the piece 'So Pra Contrariar - A Rede'. It consists of seven staves of music in 4/4 time. The tempo is marked as ♩ = 88,000023. The key signature has one flat (B-flat). The first staff (measures 1-2) features a series of sixteenth-note chords with fret numbers 6, 6, 6, and 6. The second staff (measures 3-5) includes triplets and sixteenth-note runs with fret numbers 6, 3, 3, 3, 3, and a final sixteenth-note chord with fret number 6. The third staff (measures 6-11) contains a whole note chord with fret number 6, followed by eighth-note chords with fret numbers 6 and 11. The fourth staff (measures 25-36) shows a whole note chord with fret number 10, preceded by eighth-note chords with fret numbers 6 and 10. The fifth staff (measures 37-45) features a series of sixteenth-note chords with fret numbers 6, 6, 6, and 6. The sixth staff (measures 46-51) includes triplets and sixteenth-note runs with fret numbers 6, 3, 3, 3, and a final sixteenth-note chord with fret number 6. The seventh staff (measures 52-59) contains eighth-note chords with fret numbers 28 and 7.

Kora

So Pra Contrariar - A Rede

♩ = 88,000023

2

9

15

21

28

32

39

46

53

59

V.S.

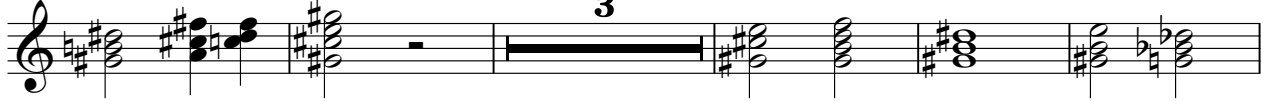
2

Kora

63



70



78



♩ = 88,000023

39

42

46

50

54

58

63

72

77

79

So Pra Contrariar - A Rede

5-string Electric Bass

♩ = 88,000023



studiovirtual@ig.com.br studiovirtualmidi.cjb.net

Tel:(31)37544

4



7



10



13



16



19



22



25



28



V.S.

31



34



37



41



44



47



50



53



56



59



62



65



68



71



76



79



81

