

Soft Cell - Tainted Love 1

$\text{♩} = 140,000473$

DRUMS

SAW WAVE

SAW WAVE

CLAVINET

SYNTH BASS

$\text{♩} = 140,000473$

SYN STRING

5

DRUMS

SAW WAVE

SAW WAVE

CLAVINET

SYNTH BASS

SYN STRING

8

DRUMS

SAW WAVE

SAW WAVE

CLAVINET

SYNTH BASS

SYN STRING

11

DRUMS

SAW WAVE

CLAVINET

SYNTH BASS

SYN STRING

Detailed description: This block contains the musical notation for measures 11, 12, and 13. The score is arranged in five staves. The top staff is for DRUMS, showing a consistent pattern of snare and kick drum hits. The second staff is for SAW WAVE, featuring a melodic line with some rests. The third staff is for CLAVINET, with a bass line that includes some chords and single notes. The fourth staff is for SYNTH BASS, and the fifth staff is for SYN STRING, both with melodic lines. The key signature has one flat (Bb).

14

DRUMS

SAW WAVE

CLAVINET

SYNTH BASS

SYN STRING

Detailed description: This block contains the musical notation for measures 14, 15, and 16. The score continues with the same five staves. The DRUMS staff shows a continuation of the drum pattern. The SAW WAVE staff has a more active melodic line. The CLAVINET staff features a more complex bass line with some chords. The SYNTH BASS and SYN STRING staves continue their respective melodic parts. The key signature remains one flat (Bb).

17

DRUMS

SAW WAVE

CLAVINET

SYNTH BASS

SYN STRING

20

DRUMS

SAW WAVE

SAW WAVE

CLAVINET

SYNTH BASS

SYN STRING

23

DRUMS

SAW WAVE

CLAVINET

SYNTH BASS

SYN STRING

26

DRUMS

SAW WAVE

CLAVINET

SYNTH BASS

SYN STRING

29

DRUMS

SAW WAVE

SAW WAVE

CLAVINET

SYNTH BASS

SYN STRING

32

DRUMS

SAW WAVE

SAW WAVE

CLAVINET

SYNTH BASS

SYN STRING

35

DRUMS

SAW WAVE

CLAVINET

SYNTH BASS

SYN STRING

38

DRUMS

SAW WAVE

CLAVINET

SYNTH BASS

SYN STRING

41

DRUMS

SAW WAVE

CLAVINET

SYNTH BASS

SYN STRING

44

DRUMS

SAW WAVE

SAW WAVE

CLAVINET

SYNTH BASS

SYN STRING

47

DRUMS

SAW WAVE

SAW WAVE

CLAVINET

SYNTH BASS

SYN STRING

50

DRUMS

SAW WAVE

SAW WAVE

CLAVINET

SYNTH BASS

SYN STRING

53

DRUMS

SAW WAVE

CLAVINET

SYNTH BASS

SYN STRING

56

DRUMS

SAW WAVE

CLAVINET

SYNTH BASS

SYN STRING

59

DRUMS

SAW WAVE

SAW WAVE

CLAVINET

SYNTH BASS

SYN STRING

62

DRUMS

SAW WAVE

SAW WAVE

CLAVINET

SYNTH BASS

SYN STRING

65

DRUMS

SAW WAVE

CLAVINET

SYNTH BASS

SYN STRING

68

DRUMS

SAW WAVE

CLAVINET

SYNTH BASS

SYN STRING

71

DRUMS

SAW WAVE

CLAVINET

SYNTH BASS

SYN STRING

74

DRUMS

SAW WAVE

SAW WAVE

CLAVINET

SYNTH BASS

SYN STRING

77

DRUMS

SAW WAVE

SAW WAVE

CLAVINET

SYNTH BASS

SYN STRING

80

DRUMS

SAW WAVE

SAW WAVE

CLAVINET

SYNTH BASS

SYN STRING

83

DRUMS

SAW WAVE

CLAVINET

SYNTH BASS

SYN STRING

86

DRUMS

SAW WAVE

CLAVINET

SYNTH BASS

SYN STRING

89

DRUMS

SAW WAVE

SAW WAVE

CLAVINET

SYNTH BASS

SYN STRING

92

DRUMS

SAW WAVE

SAW WAVE

CLAVINET

SYNTH BASS

SYN STRING

95

DRUMS

SAW WAVE

CLAVINET

SYNTH BASS

SYN STRING

98

DRUMS

SAW WAVE

CLAVINET

SYNTH BASS

SYN STRING

101

DRUMS

SAW WAVE

CLAVINET

SYNTH BASS

SYN STRING

104

DRUMS

SAW WAVE

SAW WAVE

CLAVINET

SYNTH BASS

SYN STRING

107

DRUMS

SAW WAVE

SAW WAVE

CLAVINET

SYNTH BASS

SYN STRING

110

DRUMS

SAW WAVE

SAW WAVE

CLAVINET

SYNTH BASS

SYN STRING

113

DRUMS

SAW WAVE

SAW WAVE

CLAVINET

SYNTH BASS

SYN STRING

Detailed description: This block contains the musical notation for measures 113, 114, and 115. The score is arranged in five systems. The first system includes DRUMS (top staff, snare and kick), two SAW WAVE tracks (middle staves), CLAVINET (bass clef), SYNTH BASS (bass clef), and SYN STRING (treble clef). The second system includes DRUMS, SAW WAVE, and CLAVINET. The third system includes CLAVINET, SYNTH BASS, and SYN STRING. The notation features a consistent rhythmic pattern across all instruments, with various note values and rests.

116

DRUMS

SAW WAVE

SAW WAVE

CLAVINET

SYNTH BASS

SYN STRING

Detailed description: This block contains the musical notation for measures 116, 117, and 118. The score is arranged in five systems. The first system includes DRUMS (top staff, snare and kick), two SAW WAVE tracks (middle staves), CLAVINET (bass clef), SYNTH BASS (bass clef), and SYN STRING (treble clef). The second system includes DRUMS, SAW WAVE, and CLAVINET. The third system includes CLAVINET, SYNTH BASS, and SYN STRING. The notation continues the rhythmic and melodic patterns established in the previous measures.

119

DRUMS

SAW WAVE

SAW WAVE

CLAVINET

SYNTH BASS

SYN STRING

122

DRUMS

SAW WAVE

SAW WAVE

CLAVINET

SYNTH BASS

SYN STRING

125

DRUMS

SAW WAVE

SAW WAVE

CLAVINET

SYNTH BASS

SYN STRING

Detailed description: This system of musical notation covers measures 125, 126, and 127. The DRUMS part is on a snare drum staff with a key signature of one flat and a 4/4 time signature, featuring a consistent backbeat pattern. The two SAW WAVE parts are on treble clef staves; the upper part plays a melodic line with eighth notes and rests, while the lower part provides a harmonic accompaniment with chords and single notes. The CLAVINET part is on a bass clef staff, playing a steady eighth-note bass line. The SYNTH BASS part is also on a bass clef staff, mirroring the clavinet's bass line. The SYN STRING part is on a treble clef staff, playing a simple eighth-note accompaniment.

128

DRUMS

SAW WAVE

SAW WAVE

CLAVINET

SYNTH BASS

SYN STRING

Detailed description: This system of musical notation covers measures 128, 129, and 130. The DRUMS part continues the backbeat pattern. The SAW WAVE parts continue their respective melodic and harmonic roles. The CLAVINET part maintains its eighth-note bass line. The SYNTH BASS part continues its accompaniment. The SYN STRING part continues its eighth-note accompaniment.

131

DRUMS

SAW WAVE

SAW WAVE

CLAVINET

SYNTH BASS

SYN STRING

Detailed description: This block contains the musical notation for measures 131 and 132. It features six staves: DRUMS (top), two SAW WAVE staves, CLAVINET, SYNTH BASS, and SYN STRING (bottom). The DRUMS staff uses a drum set icon and has 'x' marks above notes. The SAW WAVE staves use treble clefs and contain block chords. The CLAVINET, SYNTH BASS, and SYN STRING staves use bass clefs and contain rhythmic patterns of eighth and quarter notes.

133

DRUMS

SAW WAVE

SAW WAVE

CLAVINET

SYNTH BASS

SYN STRING

Detailed description: This block contains the musical notation for measures 133 and 134. It features the same six staves as the previous block. The DRUMS staff has 'x' marks above notes. The SAW WAVE staves contain block chords. The CLAVINET, SYNTH BASS, and SYN STRING staves contain rhythmic patterns. The piece concludes with a double bar line at the end of measure 134.

DRUMS

Soft Cell - Tainted Love 1

♩ = 140,000473

2

7

12

17

22

28

34

39

45

50

V.S.

55

61

66

71

76

81

87

93

98

104

DRUMS

110

Musical notation for drum set at measure 110. The notation is on a five-line staff with a double bar line on the left. Above the staff, 'x' marks indicate drum hits. Below the staff, a bass drum line is shown with quarter notes. The pattern consists of six measures, each containing a specific sequence of drum hits and bass drum notes.

116

Musical notation for drum set at measure 116. The notation is on a five-line staff with a double bar line on the left. Above the staff, 'x' marks indicate drum hits. Below the staff, a bass drum line is shown with quarter notes. The pattern consists of six measures, each containing a specific sequence of drum hits and bass drum notes.

122

Musical notation for drum set at measure 122. The notation is on a five-line staff with a double bar line on the left. Above the staff, 'x' marks indicate drum hits. Below the staff, a bass drum line is shown with quarter notes. The pattern consists of six measures, each containing a specific sequence of drum hits and bass drum notes.

128

Musical notation for drum set at measure 128. The notation is on a five-line staff with a double bar line on the left. Above the staff, 'x' marks indicate drum hits. Below the staff, a bass drum line is shown with quarter notes. The pattern consists of six measures, each containing a specific sequence of drum hits and bass drum notes.

132

Musical notation for drum set at measure 132. The notation is on a five-line staff with a double bar line on the left. Above the staff, 'x' marks indicate drum hits. Below the staff, a bass drum line is shown with quarter notes. The pattern consists of six measures, each containing a specific sequence of drum hits and bass drum notes.

SAW WAVE

Soft Cell - Tainted Love 1

♩ = 140,000473

2

7

12

17

22

27

31

SAW WAVE

The image displays a musical score for the piece 'SAW WAVE'. It consists of ten systems of music, each starting with a measure number on the left: 35, 44, 49, 53, 59, 63, 71, 78, 82, and 87. Each system includes a standard musical staff with a treble clef and a guitar tablature staff below it. The tablature uses numbers 0-9 to indicate fret positions and vertical bar lines to denote string boundaries. The notation includes various rhythmic values such as eighth and sixteenth notes, rests, and ties. The piece features a mix of melodic lines and dense chordal textures, with some measures containing complex chord voicings and others featuring more rhythmic patterns. The overall style is characteristic of modern rock or metal guitar music.

92

99

107

111

116

120

124

128

132

SAW WAVE

Soft Cell - Tainted Love 1

♩ = 140,000473

2

7

10

20

9

32

13

48

9

60

12

76

81

9

12

105

110

116



122



128



132



CLAVINET

Soft Cell - Tainted Love 1

♩ = 140,000473

2

8

14

18

22

26

30

34

38

V.S.

42



46



50



54



58



62



66



70



74



78



82



86



90



94



98



102



106



110



114



118



V.S.

122



126



130



133



SYNTH BASS

Soft Cell - Tainted Love 1

♩ = 140,000473

2

8

14

18

22

26

30

34

38

42

V.S.

46



50



54



58



62



66



70



74



78



82



86



90



94



98



102



106



110



114



118



122



V.S.

126



130



133



SYN STRING

Soft Cell - Tainted Love 1

♩ = 140,000473

2

8

13

18

23

29

33

43

49

53

2

2

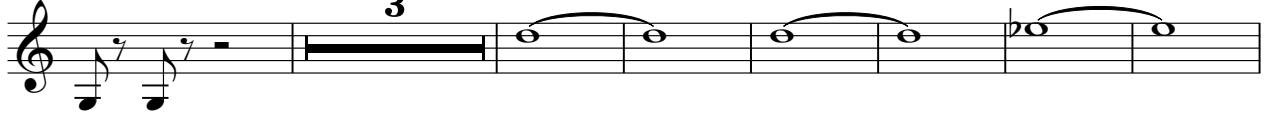
2

3

59



63



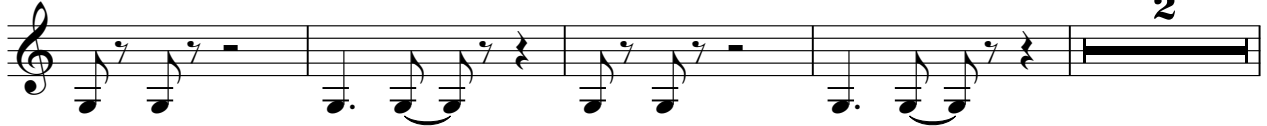
73



79



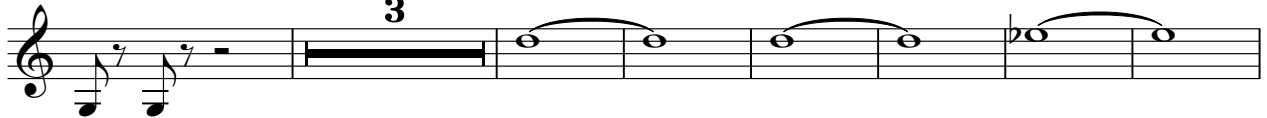
83



89



93



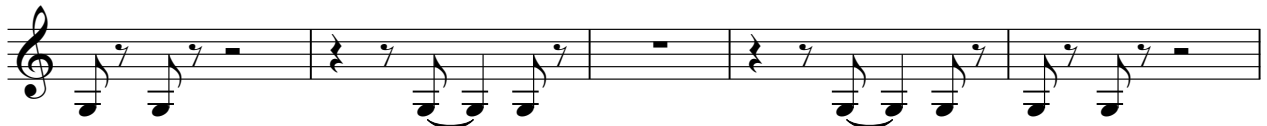
103



109



113



SYN STRING

118



122



126



130



133

