

Soundtrack - 07

♩ = 145,000031

Track 9: Drum set notation with snare and cymbal hits.

Track 10: Drum set notation with snare and cymbal hits.

Track 3: Guitar TAB notation with strings E, B, G, D, A, E and fret numbers 4 and 6.

Track 5: Treble clef staff with musical notation.

Track 1: Bass clef staff with musical notation.

Track 9: Drum set notation with snare and cymbal hits.

Track 10: Drum set notation with snare and cymbal hits.

Track 3: Guitar TAB notation with strings T, A, B and fret numbers 4 and 6.

Track 5: Treble clef staff with musical notation.

Track 1: Bass clef staff with musical notation.

3

5

Track 9: Drum track with a snare hit on the first beat of each measure and a cymbal hit on the second beat.

Track 10: Drum track with a bass drum hit on the first beat of each measure and a snare hit on the second beat.

Track 3: Empty guitar tracks labeled T, A, and B.

Track 5: Treble clef guitar track with notes G4, A4, B4, C5, D5, E5, F5, G5.

Track 1: Bass clef guitar track with notes G2, F2, E2, D2, C2, B1, A1, G1.

Measures 5 and 6 are shown. Measure 5 contains the first four notes of the guitar parts, and measure 6 contains the last four notes.

7

Track 9: Drum track with a snare hit on the first beat of each measure and a cymbal hit on the second beat.

Track 10: Drum track with a bass drum hit on the first beat of each measure and a snare hit on the second beat.

Track 3: Empty guitar tracks labeled T, A, and B.

Track 5: Treble clef guitar track with notes G4, A4, B4, C5, D5, E5, F5, G5.

Track 1: Bass clef guitar track with notes G2, F2, E2, D2, C2, B1, A1, G1.

Measures 7 and 8 are shown. Measure 7 contains the first four notes of the guitar parts, and measure 8 contains the last four notes.

9

Track 9

Track 10

Track 3

Track 7

Track 1

Track 6

11

Track 9

Track 10

Track 7

Track 1

Track 6

13

Track 9

Track 10

Track 7
T
A
B
6 0 1 2 3 2 1 0 6 6 6 6 6 6 5 4 5 6 6 6 6

Track 1

Track 6

15

Track 9

Track 10

Track 7
T
A
B
6 0 1 2 3 2 1 0 6 6 6 6 6 6 5 4 5 6 6 6 6

Track 1

Track 6

17

Track 9: Two staves with a treble clef. The first staff has a whole rest in the first measure and a dotted quarter note with an 'x' in the second measure. The second staff has a whole rest in the first measure and a dotted quarter note in the second measure.

Track 10: Two staves with a treble clef. The first staff has a whole rest in the first measure and a dotted quarter note in the second measure. The second staff has a rhythmic pattern of eighth notes with 'x' marks, starting with a dotted quarter note in the first measure and continuing in the second.

Track 3: A guitar TAB staff with two lines. The first line has a 'T' above it. The second line has an 'A' above it. The third line has a 'B' above it. The first measure has a '4' below it, and the second measure has a '6' below it.

Track 5: A staff with a treble clef. The first measure has a dotted quarter note, a quarter rest, and a quarter note. The second measure has a dotted quarter note, a quarter rest, and a quarter note. The third measure has a dotted quarter note, a quarter rest, and a quarter note. The fourth measure has a dotted quarter note, a quarter rest, and a quarter note.

Track 1: A staff with a bass clef. The first measure has a dotted quarter note, a quarter rest, and a quarter note. The second measure has a dotted quarter note, a quarter rest, and a quarter note. The third measure has a dotted quarter note, a quarter rest, and a quarter note. The fourth measure has a dotted quarter note, a quarter rest, and a quarter note.

19

Track 9: Two staves with a treble clef. The first staff has a whole rest in the first measure and a dotted quarter note with an 'x' in the second measure. The second staff has a whole rest in the first measure and a dotted quarter note in the second measure.

Track 10: Two staves with a treble clef. The first staff has a whole rest in the first measure and a dotted quarter note in the second measure. The second staff has a rhythmic pattern of eighth notes with 'x' marks, starting with a dotted quarter note in the first measure and continuing in the second.

Track 3: A guitar TAB staff with two lines. The first line has a 'T' above it. The second line has an 'A' above it. The third line has a 'B' above it. The first measure has a '4' below it, and the second measure has a '6' below it.

Track 5: A staff with a treble clef. The first measure has a dotted quarter note, a quarter rest, and a quarter note. The second measure has a dotted quarter note, a quarter rest, and a quarter note. The third measure has a dotted quarter note, a quarter rest, and a quarter note. The fourth measure has a dotted quarter note, a quarter rest, and a quarter note.

Track 1: A staff with a bass clef. The first measure has a dotted quarter note, a quarter rest, and a quarter note. The second measure has a dotted quarter note, a quarter rest, and a quarter note. The third measure has a dotted quarter note, a quarter rest, and a quarter note. The fourth measure has a dotted quarter note, a quarter rest, and a quarter note.

21

Track 9

Track 10

Track 3
TAB

Track 5

Track 1

Detailed description: This block shows musical notation for five tracks across two measures. Track 9 (drums) has a snare hit on the first beat of each measure and a hi-hat on the second. Track 10 (drums) has a kick drum on the first beat of each measure and a snare on the second. Track 3 (guitar) shows fret numbers 4 and 6. Track 5 (treble clef) has a melodic line with eighth notes and rests. Track 1 (bass clef) has a bass line with eighth notes and rests.

23

Track 9

Track 10

Track 3
TAB

Track 5

Track 1

Detailed description: This block shows musical notation for five tracks across two measures. Track 9 (drums) has a snare hit on the first beat of each measure and a hi-hat on the second. Track 10 (drums) has a kick drum on the first beat of each measure and a snare on the second. Track 3 (guitar) shows fret numbers 4 and 6. Track 5 (treble clef) has a melodic line with eighth notes and rests. Track 1 (bass clef) has a bass line with eighth notes and rests.

25

Track 9

Track 10

Track 3

Track 7

Track 1

Track 6

27

Track 9

Track 10

Track 7

Track 1

Track 6

29

Track 9

Track 10

Track 7

Track 1

Track 6

31

Track 9

Track 10

Track 7

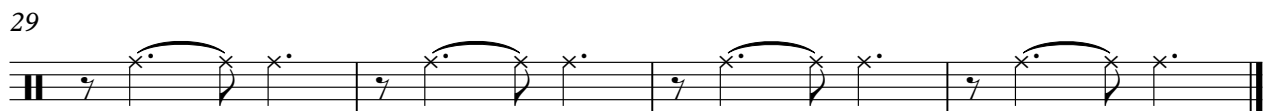
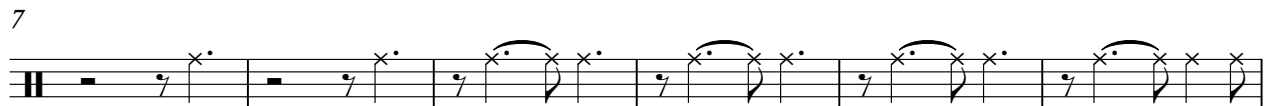
Track 1

Track 6

Track 9

Soundtrack - 07

♩ = 145,000031



Track 10

Soundtrack - 07

♩ = 145,000031

4/4

4

7

10

13

16

19

22

25

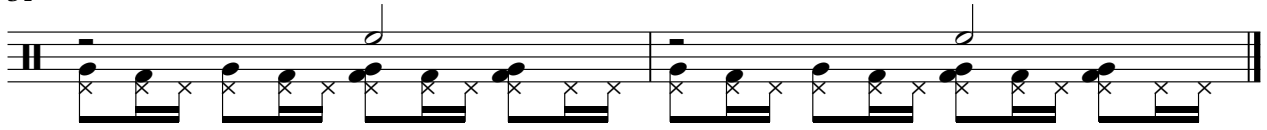
28

V.S.

2

Track 10

31



Soundtrack - 07

Track 3

♩ = 145,000031

A guitar tab for measures 1 through 9. The strings are labeled E, B, G, D, A, E from top to bottom. The fret numbers for each measure are: 4, 6, 4, 6, 4, 6, 4, 6, 6.

10

7

A guitar tab for measures 10 through 14. The strings are labeled T, A, B from top to bottom. Measure 10 contains a thick black bar across the A and B strings. The fret numbers for measures 11-14 are: 4, 6, 4, 6, 4.

22

7

A guitar tab for measures 22 through 25. The strings are labeled T, A, B from top to bottom. Measures 22-24 have fret numbers 6, 4, 6, 6. Measure 25 contains a thick black bar across the A and B strings.

Soundtrack - 07

Track 7

♩ = 145,000031
8

E
B
T
G
A
D
A
B
E
A

6 0 1 2 3 2 1 0 6 6 6 6 6 6 5 4 5 6 6 6 6

11

T
A
B

6 0 1 2 3 2 1 0 6 6 6 6 6 6 5 4 5 6 6 6 6

13

T
A
B

6 0 1 2 3 2 1 0 6 6 6 6 6 6 5 4 5 6 6 6 6

15

8

T
A
B

6 0 1 2 3 2 1 0 6 6 6 6 6 6 5 4 5 6 6 6 6

25

T
A
B

6 0 1 2 3 2 1 0 6 6 6 6 6 6 5 4 5 6 6 6 6

27

T
A
B

6 0 1 2 3 2 1 0 6 6 6 6 6 6 5 4 5 6 6 6 6

29

T
A
B

6 0 1 2 3 2 1 0 6 6 6 6 6 6 5 4 5 6 6 6 6

31

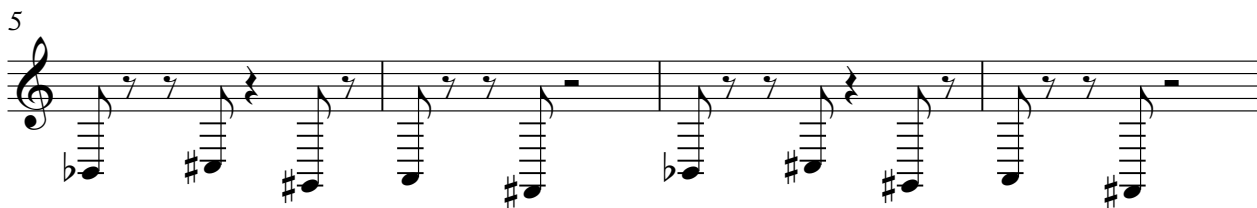
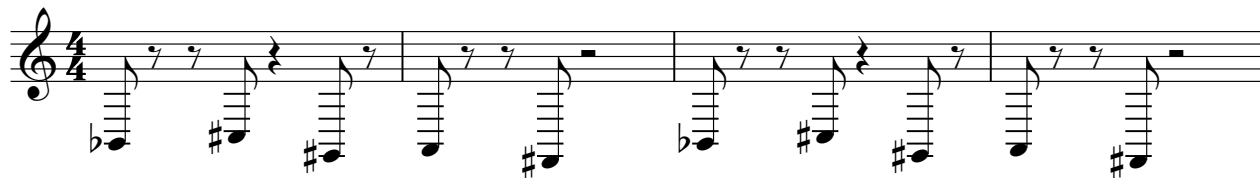
T
A
B

6 0 1 2 3 2 1 0 6 6 6 6 6 6 5 4 5 6 6 6 6

Track 5

Soundtrack - 07

♩ = 145,000031



Soundtrack - 07

Track 6

♩ = 145,000031

8

10

12

14

16

25

27

29

31