

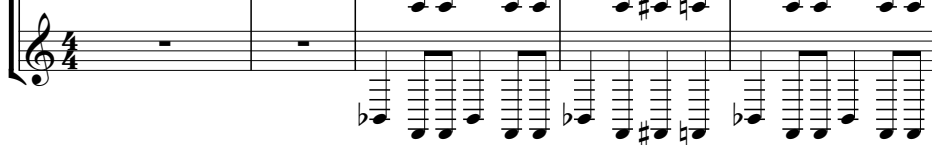


Soundtrack - ali

♩ = 177,023529

BrassSection Arranged by... 

StrEnsemble2 


StrEnsemble2 



6


BrassSection Arranged by... 

StrEnsemble2 

StrEnsemble2 



11

BrassSection Arranged by... 

StrEnsemble2 

StrEnsemble2 

16

Acoustic Bass

SynthVoice ... Gene Cowan

BrassSection Arranged by...

StrEnsemble2

StrEnsemble2

Violin



21

Acoustic Bass

SynthVoice ... Gene Cowan

StrEnsemble2

Violin



25

Acoustic Bass

SynthVoice ... Gene Cowan

StrEnsemble2

Violin

29

Sitar

Acoustic Bass

SynthVoice ... Gene Cowan

StrEnsemble2

Violin

Detailed description: This system contains measures 29 through 32. The Sitar part has rests in measures 29 and 30, followed by a melodic phrase in measure 31. The Acoustic Bass part has a dotted quarter note in measure 29, rests in 30 and 31, and a half note in measure 32. The SynthVoice part (Gene Cowan) has a melodic line throughout. The StrEnsemble2 part has rests in 29 and 30, followed by a rhythmic pattern of eighth notes in 31 and 32. The Violin part has a complex melodic line with many beamed notes and rests.



33

Sitar

Acoustic Bass

SynthVoice ... Gene Cowan

StrEnsemble2

StrEnsemble2

Violin

Detailed description: This system contains measures 33 through 36. The Sitar part has a melodic line starting in measure 33. The Acoustic Bass part has a steady bass line. The SynthVoice part (Gene Cowan) has a melodic line. The first StrEnsemble2 part has rests in 33 and 34, followed by a rhythmic pattern in 35 and 36. The second StrEnsemble2 part has a rhythmic pattern of eighth notes throughout. The Violin part has a melodic line with many beamed notes.

37

Sitar

Acoustic Bass

SynthVoice ... Gene Cowan

StrEnsemble2

StrEnsemble2

Violin

Detailed description: This musical system covers measures 37 to 40. The Sitar part (treble clef) has rests in measures 37 and 38, then plays a melodic phrase in measure 39. The Acoustic Bass (bass clef) provides a steady harmonic accompaniment. The SynthVoice part (treble clef) features a vocal line starting in measure 39. The two StrEnsemble2 staves (treble clef) play rhythmic patterns with chords. The Violin (treble clef) plays a melodic line with some double stops.



41

Sitar

Acoustic Bass

SynthVoice ... Gene Cowan

StrEnsemble2

StrEnsemble2

Violin

Grand Piano

Detailed description: This musical system covers measures 41 to 44. The Sitar (treble clef) plays a melodic line. The Acoustic Bass (bass clef) continues the harmonic support. The SynthVoice (treble clef) has a vocal line. The two StrEnsemble2 staves (treble clef) play rhythmic accompaniment. The Violin (treble clef) plays a melodic line. The Grand Piano (treble clef) has rests in measures 41 and 42, then enters in measure 43.

45

Sitar

Acoustic Bass

SynthVoice ... Gene Cowan

StrEnsemble2

StrEnsemble2

Violin

Grand Piano

Detailed description: This system of musical notation covers measures 45 through 48. It features six staves: Sitar, Acoustic Bass, SynthVoice (Gene Cowan), two StrEnsemble2 parts, Violin, and Grand Piano. The Sitar, SynthVoice, and Violin parts have melodic lines with some slurs. The Acoustic Bass and Grand Piano parts provide harmonic support with chords and bass lines. The two StrEnsemble2 parts play rhythmic patterns, with the lower part featuring a dense, repetitive texture.



49

Sitar

Acoustic Bass

SynthVoice ... Gene Cowan

StrEnsemble2

StrEnsemble2

Violin

Grand Piano

Detailed description: This system of musical notation covers measures 49 through 52. It features the same six staves as the previous system. The Sitar, SynthVoice, and Violin parts continue their melodic lines. The Acoustic Bass and Grand Piano parts maintain their harmonic roles. The two StrEnsemble2 parts continue their rhythmic patterns, with the lower part showing a consistent, driving texture.

53

Sitar

Acoustic Bass

SynthVoice ... Gene Cowan

StrEnsemble2

StrEnsemble2

Violin

Grand Piano

Detailed description: This block contains a musical score for measures 53 through 56. The score is arranged in a system with seven staves. From top to bottom, the staves are: Sitar (treble clef), Acoustic Bass (bass clef), SynthVoice ... Gene Cowan (bass clef), StrEnsemble2 (treble clef), another StrEnsemble2 (treble clef), Violin (treble clef), and Grand Piano (treble clef). The music is in a key with one flat (B-flat major or D minor) and a 4/4 time signature. The Sitar part features a melodic line with some grace notes. The Acoustic Bass provides a steady harmonic foundation with quarter and eighth notes. The SynthVoice part has a more active melodic line. The two StrEnsemble2 parts play rhythmic patterns, with the lower one featuring a consistent eighth-note accompaniment. The Violin part has a melodic line that often moves in parallel motion with the Sitar. The Grand Piano part provides harmonic support with chords and single notes.



57

Sitar

Acoustic Bass

SynthVoice ... Gene Cowan

StrEnsemble2

StrEnsemble2

Violin

Grand Piano

Detailed description: This block contains a musical score for measures 57 through 60. The score is arranged in a system with seven staves, identical in layout to the previous block. The music continues in the same key and time signature. The Sitar part has a melodic line with some grace notes. The Acoustic Bass provides a steady harmonic foundation. The SynthVoice part has a more active melodic line. The two StrEnsemble2 parts play rhythmic patterns, with the lower one featuring a consistent eighth-note accompaniment. The Violin part has a melodic line that often moves in parallel motion with the Sitar. The Grand Piano part provides harmonic support with chords and single notes.

61

Sitar

Acoustic Bass

SynthVoice ... Gene Cowan

StrEnsemble2

StrEnsemble2

Fantasia

Violin

Grand Piano



65

Sitar

Acoustic Bass

StrEnsemble2

StrEnsemble2

Fantasia

Violin

Grand Piano

70

Sitar

Acoustic Bass

SynthVoice ... Gene Cowan

StrEnsemble2

StrEnsemble2

Fantasia

Violin

Grand Piano

Detailed description: This block contains the musical score for measures 70 through 73. It features seven staves: Sitar, Acoustic Bass, SynthVoice (Gene Cowan), two StrEnsemble2 staves, Fantasia, Violin, and Grand Piano. The Sitar, StrEnsemble2, and Grand Piano parts play a rhythmic pattern of eighth notes with a dotted quarter note. The Acoustic Bass part provides a harmonic foundation with a sequence of chords. The SynthVoice part has a melodic line with some rests. The Violin part follows a similar melodic line to the SynthVoice. The Fantasia part is mostly silent with some initial notes.



74

Sitar

Acoustic Bass

SynthVoice ... Gene Cowan

StrEnsemble2

StrEnsemble2

Violin

Grand Piano

Detailed description: This block contains the musical score for measures 74 through 77. It features the same seven staves as the previous block. The Sitar, StrEnsemble2, and Grand Piano parts continue with their rhythmic patterns. The Acoustic Bass part has a more active line with eighth notes. The SynthVoice part has a more complex melodic line with many eighth notes. The Violin part also has a more active melodic line. The Fantasia part remains mostly silent.

78

Sitar

Acoustic Bass

SynthVoice ... Gene Cowan

Pizz Strings

StrEnsemble2

StrEnsemble2

Fantasia

Violin

Grand Piano

Detailed description: This is a page of a musical score, page 9, starting at measure 78. The score is arranged in a vertical stack of staves. From top to bottom, the staves are: Sitar (treble clef), Acoustic Bass (bass clef), SynthVoice ... Gene Cowan (treble clef), Pizz Strings (treble clef), StrEnsemble2 (treble clef), another StrEnsemble2 (treble clef), Fantasia (treble clef), Violin (treble clef), and Grand Piano (treble clef). The Sitar, StrEnsemble2, and Grand Piano parts play a similar rhythmic pattern of chords and notes. The Acoustic Bass part provides a steady bass line. The SynthVoice part features a melodic line with some grace notes. The Pizz Strings and Fantasia parts play a rhythmic accompaniment. The Violin part plays a melodic line similar to the SynthVoice. The notation includes various note values, rests, and accidentals.

82

Sitar

Acoustic Bass

SynthVoice ... Gene Cowan

Pizz Strings

StrEnsemble2

StrEnsemble2

Fantasia

Violin

Grand Piano

Detailed description: This is a page of a musical score, page 10, starting at measure 82. The score is arranged in a vertical stack of staves. From top to bottom, the staves are: Sitar (treble clef), Acoustic Bass (bass clef), SynthVoice ... Gene Cowan (treble clef), Pizz Strings (treble clef), StrEnsemble2 (treble clef), another StrEnsemble2 (treble clef), Fantasia (treble clef), Violin (treble clef), and Grand Piano (treble clef). The Sitar, StrEnsemble2, and Grand Piano parts play a similar rhythmic pattern of chords and notes. The Acoustic Bass part provides a steady bass line. The SynthVoice part features a melodic line with some grace notes. The Pizz Strings and Fantasia parts play a rhythmic accompaniment. The Violin part has a melodic line with some grace notes. The second StrEnsemble2 part plays a rhythmic accompaniment.

86

Sitar

Acoustic Bass

SynthVoice ... Gene Cowan

Pizz Strings

StrEnsemble2

StrEnsemble2

Fantasia

Violin

Grand Piano

Detailed description: This musical score page contains eight staves for measures 86 through 89. The instruments are Sitar, Acoustic Bass, SynthVoice (Gene Cowan), Pizz Strings, StrEnsemble2 (two parts), Fantasia, Violin, and Grand Piano. The Sitar, StrEnsemble2 (top), and Grand Piano parts play a similar rhythmic pattern of eighth notes with rests. The Acoustic Bass part provides a steady bass line with half notes. The SynthVoice part features a melodic line with eighth and quarter notes. The Pizz Strings and Fantasia parts play a continuous eighth-note accompaniment. The Violin part follows a similar melodic line to the SynthVoice.

90

Sitar

Acoustic Bass

SynthVoice ... Gene Cowan

Pizz Strings

StrEnsemble2

StrEnsemble2

Fantasia

Violin

Grand Piano

Detailed description: This is a page of a musical score, page 12, starting at measure 90. The score is arranged in a vertical stack of staves. From top to bottom, the staves are: Sitar (treble clef), Acoustic Bass (bass clef), SynthVoice ... Gene Cowan (treble clef), Pizz Strings (treble clef), StrEnsemble2 (treble clef), another StrEnsemble2 (treble clef), Fantasia (treble clef), Violin (treble clef), and Grand Piano (treble clef). The Sitar, StrEnsemble2, and Grand Piano parts play a similar rhythmic pattern of chords and single notes. The Acoustic Bass part provides a steady bass line. The SynthVoice part features a melodic line with some grace notes. The Pizz Strings and Fantasia parts play a more active, rhythmic melody. The Violin part plays a melodic line similar to the SynthVoice. The second StrEnsemble2 part has a more complex, rhythmic pattern.

94

Sitar

Acoustic Bass

SynthVoice ... Gene Cowan

Pizz Strings

StrEnsemble2

StrEnsemble2

Fantasia

Violin

Grand Piano

98

Sitar

Acoustic Bass

SynthVoice ... Gene Cowan

StrEnsemble2

StrEnsemble2

Fantasia

Violin

Grand Piano

Detailed description: This block contains the musical score for measures 98 through 101. It features seven staves: Sitar, Acoustic Bass, SynthVoice (Gene Cowan), two StrEnsemble2 staves, Fantasia, Violin, and Grand Piano. The Sitar, StrEnsemble2, and Grand Piano parts play a rhythmic pattern of eighth notes with chords. The Acoustic Bass part provides a steady bass line. The SynthVoice and Violin parts play a melodic line with a mix of eighth and quarter notes. The Fantasia part has a more complex, arpeggiated texture.



102

Sitar

Acoustic Bass

SynthVoice ... Gene Cowan

StrEnsemble2

StrEnsemble2

Fantasia

Violin

Grand Piano

Detailed description: This block contains the musical score for measures 102 through 105. It features the same seven staves as the previous block. The Sitar, StrEnsemble2, and Grand Piano parts continue with their rhythmic patterns. The Acoustic Bass part continues with its bass line. The SynthVoice and Violin parts continue with their melodic lines. The Fantasia part continues with its arpeggiated texture.

106

Sitar

Acoustic Bass

SynthVoice ... Gene Cowan

StrEnsemble2

StrEnsemble2

Fantasia

Violin

Grand Piano

Detailed description: This is a multi-staff musical score for a 5-measure phrase. The score includes parts for Sitar, Acoustic Bass, SynthVoice (Gene Cowan), two StrEnsemble2 parts, Fantasia, Violin, and Grand Piano. The Sitar, StrEnsemble2 (top), and Grand Piano parts play a similar melodic line with chords. The Acoustic Bass part provides a simple harmonic accompaniment. The SynthVoice part features a vocal line with lyrics. The Violin part plays a melodic line with some slurs. The Fantasia part has a melodic line with long slurs. The second StrEnsemble2 part has a rhythmic accompaniment with many beamed notes.

111

Sitar

Acoustic Bass

SynthVoice ... Gene Cowan

Pizz Strings

StrEnsemble2

StrEnsemble2

Fantasia

Violin

Grand Piano

116

Sitar

Acoustic Bass

SynthVoice ... Gene Cowan

Pizz Strings

StrEnsemble2

StrEnsemble2

Fantasia

Violin

Grand Piano

Detailed description: This block contains the musical score for measures 116 through 119. It features eight staves: Sitar, Acoustic Bass, SynthVoice (Gene Cowan), Pizz Strings, two StrEnsemble2 staves, Fantasia, Violin, and Grand Piano. The Sitar and SynthVoice parts have a melodic line with a fermata over the final note of measure 116. The Acoustic Bass provides a steady bass line. The Pizz Strings play a rhythmic pattern. The two StrEnsemble2 staves provide harmonic support with chords and rhythmic patterns. The Fantasia part has a melodic line similar to the Sitar. The Violin and Grand Piano parts provide additional harmonic and rhythmic layers.



120

Sitar

Acoustic Bass

SynthVoice ... Gene Cowan

StrEnsemble2

StrEnsemble2

Violin

Grand Piano

Detailed description: This block contains the musical score for measures 120 through 123. It features seven staves: Sitar, Acoustic Bass, SynthVoice (Gene Cowan), two StrEnsemble2 staves, Violin, and Grand Piano. The Sitar part has a melodic line with a fermata over the final note of measure 120. The Acoustic Bass provides a steady bass line. The SynthVoice part has a melodic line with a fermata over the final note of measure 120. The two StrEnsemble2 staves provide harmonic support with chords and rhythmic patterns. The Violin and Grand Piano parts provide additional harmonic and rhythmic layers.

124

Sitar

Acoustic Bass

SynthVoice ... Gene Cowan

Pizz Strings

StrEnsemble2

StrEnsemble2

Fantasia

Violin

Grand Piano

Detailed description: This is a page of a musical score, page 18, starting at measure 124. The score is arranged in a vertical stack of staves. From top to bottom, the staves are: Sitar (treble clef), Acoustic Bass (bass clef), SynthVoice ... Gene Cowan (treble clef), Pizz Strings (treble clef), StrEnsemble2 (treble clef), another StrEnsemble2 (treble clef), Fantasia (treble clef), Violin (treble clef), and Grand Piano (treble clef). The Sitar, SynthVoice, and Violin parts have melodic lines with various ornaments and phrasing. The Acoustic Bass part provides a steady harmonic foundation. The Pizz Strings part is mostly silent with some late-measure activity. The two StrEnsemble2 parts provide rhythmic and harmonic support. The Fantasia part is mostly silent. The Grand Piano part provides a complex harmonic and rhythmic accompaniment.

128

Sitar

Acoustic Bass

SynthVoice ... Gene Cowan

Pizz Strings

StrEnsemble2

StrEnsemble2

Fantasia

Violin

Grand Piano

Detailed description: This is a page of a musical score, page 19, starting at measure 128. The score is arranged in a vertical stack of staves. From top to bottom, the staves are: Sitar (treble clef), Acoustic Bass (bass clef), SynthVoice ... Gene Cowan (treble clef), Pizz Strings (treble clef), StrEnsemble2 (treble clef), StrEnsemble2 (treble clef), Fantasia (treble clef), Violin (treble clef), and Grand Piano (treble clef). The Sitar, SynthVoice, Pizz Strings, and Fantasia parts feature a melodic line with eighth and sixteenth notes, often with slurs. The Acoustic Bass part consists of a simple bass line with quarter notes. The two StrEnsemble2 parts provide harmonic support with chords and some melodic fragments. The Violin and Grand Piano parts also feature melodic lines with some chords. The key signature has one flat (B-flat), and the time signature is 4/4.

132

Sitar

Acoustic Bass

SynthVoice ... Gene Cowan

Pizz Strings

StrEnsemble2

StrEnsemble2

Fantasia

Violin

Grand Piano

Detailed description: This is a page of a musical score, page 20, starting at measure 132. The score is arranged in a vertical stack of staves. From top to bottom, the staves are: Sitar (treble clef), Acoustic Bass (bass clef), SynthVoice ... Gene Cowan (treble clef), Pizz Strings (treble clef), StrEnsemble2 (treble clef), another StrEnsemble2 staff (treble clef) containing guitar tablature, Fantasia (treble clef), Violin (treble clef), and Grand Piano (treble clef). The Sitar, SynthVoice, Pizz Strings, and Fantasia parts feature a melodic line of eighth notes with a key signature of one flat and a common time signature. The Acoustic Bass part provides a harmonic accompaniment with chords and single notes. The Violin and Grand Piano parts play chords that support the melody. The second StrEnsemble2 staff contains guitar tablature corresponding to the notes in the other parts.

138

Sitar

Acoustic Bass

SynthVoice ... Gene Cowan

Pizz Strings

StrEnsemble2

StrEnsemble2

Fantasia

Violin

Grand Piano



141

Acoustic Bass

SynthVoice ... Gene Cowan

Pizz Strings

StrEnsemble2

StrEnsemble2

Violin

Grand Piano

Soundtrack - ali

Sitar

♩ = 177,023529

29

2

35

2

42

48

53

2

61

68

74

79

83

Detailed description: The image shows a musical score for a Sitar in 4/4 time. The tempo is marked as ♩ = 177,023529. The score consists of ten staves of music, each starting with a measure number. The first staff (measures 29-34) features a whole rest followed by a melodic phrase. The second staff (measures 35-41) continues the melody with various rhythmic patterns. The third staff (measures 42-47) shows a more complex rhythmic structure with multiple notes per measure. The fourth staff (measures 48-52) continues the melodic development. The fifth staff (measures 53-60) includes a double bar line and a '2' marking, indicating a two-measure rest. The sixth staff (measures 61-67) features a series of chords and rests. The seventh staff (measures 68-73) continues the melodic line. The eighth staff (measures 74-78) shows a sequence of notes and rests. The ninth staff (measures 79-82) continues the melodic phrase. The tenth staff (measures 83-88) concludes the piece with a final melodic phrase and a whole rest.

87



92



97



102



107



114



120



125



130



135



Soundtrack - ali

Acoustic Bass

♩ = 177,023529

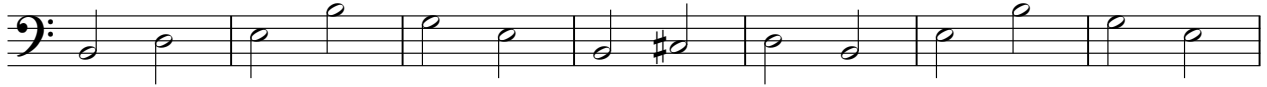


V.S.

87



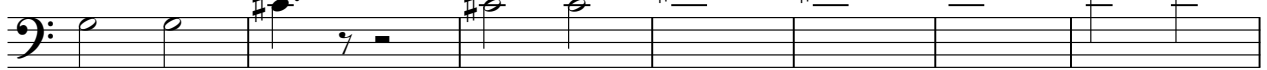
94



101



108



115



122



130



138



♩ = 177,023529

18

23

28

33

39

44

50

55

59

7

70



76



81



87



92



98



104



110



117



123



128



133



138



BrassSection Arranged by... Soundtrack - ali

♩ = 177,023529

7

13

#

17

126

Pizz Strings

Soundtrack - ali

♩ = 177,023529

78

82

87

92

115

127

132

138

19

8

2

♩ = 177,023529

2

7

13 14

33 2

40

46

51 2

56

119



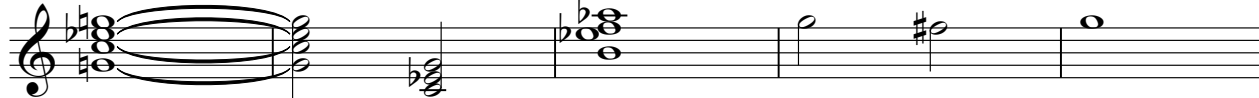
124



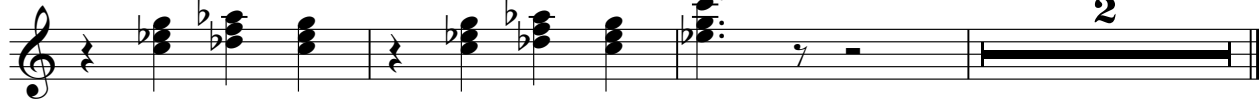
129



135



140



♩ = 177,023529

2

7

12

17

22

27

32

37

42

47

V.S.

Musical score for StrEnsemble2, measures 52-102. The score is written on ten staves, each beginning with a treble clef. The music consists of a series of chords and melodic lines, primarily using eighth and quarter notes. The key signature is one flat (B-flat major or D minor). The notation includes various accidentals (sharps and flats) and rests. The measures are numbered 52, 57, 62, 67, 72, 77, 82, 87, 92, and 97. The score shows a progression of chords and melodic fragments across the staves.

103

108

115

120

125

130

138

141

♩ = 177,023529

61

66 8

79

84

89

94 2 2

101

107

115 7

126



131



136



Soundtrack - ali

Violin

♩ = 177,023529

18

23

28

32

37

42

47

52

56

60

V.S.

66



72



77



82



87



92



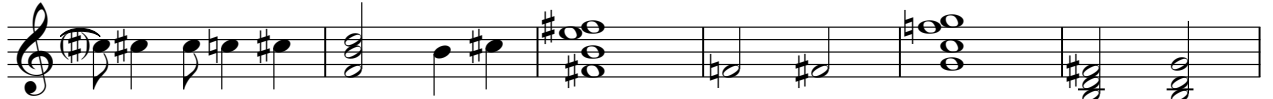
98



104



109



115



120



125



129



133



138



Grand Piano

Soundtrack - ali

♩ = 177,023529

42

47

52

59

66

73

78

82

87



92



97



102



107



114



120



125



129



135



140

2