

Spanish - Eddy Herrera Demasiado romantica

0.0"
0.0;00
tk0000
Demasiado

♩ = 136,000153 ♩ = 136,000153

Piccolo in D♭

Alto Saxophone

Tenor Saxophone

Baroque Trumpet

Trombone

Percussion

Fretless Electric Bass

Orchestra Hit

FX 5 (Brightness)

Solo

6

Db Picc.

Alto Sax.

Ten. Sax.

Perc.

E. Bass

FX 5

Solo

9

Db Picc.

Alto Sax.

Ten. Sax.

Bar. Tpt.

Tbn.

Perc.

E. Bass

Orch. Hit

FX 5

Solo

12

Alto Sax.
Ten. Sax.
Bar. Tpt.
Tbn.
Perc.
E. Bass
Orch. Hit
Solo

Detailed description: This system contains measures 12, 13, and 14. The Alto Sax and Tenor Sax parts play a rhythmic melody of eighth notes. The Baritone Trumpet and Trombone parts play a similar melody in a lower register. The Percussion part features a complex, syncopated pattern with many rests. The Electric Bass part plays a simple eighth-note line. The Orchestral Hit part plays a melody similar to the saxophones. The Solo part consists of chords and single notes.



15

Alto Sax.
Ten. Sax.
Bar. Tpt.
Tbn.
Perc.
E. Bass
Orch. Hit
Solo

Detailed description: This system contains measures 15, 16, and 17. The Alto Sax and Tenor Sax parts continue their rhythmic melody. The Baritone Trumpet and Trombone parts play a similar melody. The Percussion part continues its complex pattern. The Electric Bass part plays a simple eighth-note line. The Orchestral Hit part plays a melody similar to the saxophones. The Solo part consists of chords and single notes.

18

Db Picc.
Alto Sax.
Ten. Sax.
Bar. Tpt.
Tbn.
Perc.
E. Bass
Orch. Hit
FX 5
Solo

Detailed description: This system of music covers measures 18, 19, and 20. The Db Picc. part features a melodic line with eighth and sixteenth notes. The Alto Sax. and Ten. Sax. parts are mostly rests. The Bar. Tpt. and Tbn. parts also have rests. The Perc. part has a consistent rhythmic pattern of eighth notes with 'x' marks. The E. Bass part has a steady eighth-note bass line. The Orch. Hit part has rests. The FX 5 part has a long, sustained chord. The Solo part has a complex, rhythmic accompaniment with many beamed notes.



21

Db Picc.
Perc.
E. Bass
FX 5
Solo

Detailed description: This system of music covers measures 21, 22, and 23. The Db Picc. part has a melodic line with some rests. The Perc. part continues with its rhythmic pattern. The E. Bass part has a steady eighth-note bass line. The FX 5 part has a long, sustained chord. The Solo part has a complex, rhythmic accompaniment with many beamed notes.

23

Db Picc.

Perc.

E. Bass

FX 5

Solo



25

Db Picc.

Perc.

E. Bass

FX 5

Solo



28

Db Picc.

Perc.

E. Bass

FX 5

Solo

30

Db Picc.

Perc.

E. Bass

Solo

32

Db Picc.

Perc.

E. Bass

Solo

34

Db Picc.

Alto Sax.

Ten. Sax.

Bar. Tpt.

Tbn.

Perc.

E. Bass

Orch. Hit

Solo

36

Db Picc.

Alto Sax.

Ten. Sax.

Bar. Tpt.

Tbn.

Perc.

E. Bass

Orch. Hit

Solo

38

Db Picc.

Alto Sax.

Ten. Sax.

Bar. Tpt.

Tbn.

Perc.

E. Bass

Orch. Hit

Solo

40

Db Picc.
Alto Sax.
Ten. Sax.
Bar. Tpt.
Tbn.
Perc.
E. Bass
Orch. Hit
Solo

This system contains measures 40, 41, and 42. The Db Piccolo and Alto Saxophone parts have melodic lines with eighth and quarter notes. The Tenor Saxophone and Baritone Trombone parts have similar melodic lines. The Trombone part has a long note in measure 41. The Percussion part has a consistent rhythmic pattern of eighth notes. The Electric Bass and Orchestral Hit parts have melodic lines. The Solo part features a complex, multi-measure rhythmic pattern with many beamed notes.

43

Db Picc.
Alto Sax.
Ten. Sax.
Bar. Tpt.
Tbn.
Perc.
E. Bass
Orch. Hit
Solo

This system contains measures 43, 44, and 45. The Db Piccolo and Alto Saxophone parts have melodic lines. The Tenor Saxophone and Baritone Trombone parts have rhythmic patterns of eighth notes. The Trombone part has a long note in measure 44. The Percussion part has a consistent rhythmic pattern. The Electric Bass and Orchestral Hit parts have melodic lines. The Solo part features a complex, multi-measure rhythmic pattern with many beamed notes.

46

Db Picc.

Alto Sax.

Ten. Sax.

Bar. Tpt.

Tbn.

Perc.

E. Bass

Orch. Hit

Solo

48

Db Picc.

Alto Sax.

Ten. Sax.

Bar. Tpt.

Tbn.

Perc.

E. Bass

Orch. Hit

Solo

50

Db Picc.

Alto Sax.

Ten. Sax.

Bar. Tpt.

Tbn.

Perc.

E. Bass

Orch. Hit

Solo

52

Db Picc.

Alto Sax.

Ten. Sax.

Bar. Tpt.

Tbn.

Perc.

E. Bass

Orch. Hit

Solo

54

Db Picc.

Alto Sax.

Ten. Sax.

Bar. Tpt.

Tbn.

Perc.

E. Bass

Orch. Hit

Solo

56

Db Picc.

Alto Sax.

Ten. Sax.

Bar. Tpt.

Tbn.

Perc.

E. Bass

Orch. Hit

Solo

58

Db Picc.
Alto Sax.
Ten. Sax.
Bar. Tpt.
Tbn.
Perc.
E. Bass
Orch. Hit
Solo

Detailed description: This system contains measures 58 and 59. The Db Picc. part has a melodic line with a quarter rest in measure 59. The Alto and Tenor Saxophones play a rhythmic eighth-note pattern. The Baritone Trumpet and Trombone parts have a simple rhythmic accompaniment. The Percussion part features a consistent eighth-note pattern. The Electric Bass and Orchestra Hit parts provide harmonic support. The Solo part consists of a series of chords.

60

Db Picc.
Alto Sax.
Ten. Sax.
Bar. Tpt.
Tbn.
Perc.
E. Bass
Orch. Hit
Solo

Detailed description: This system contains measures 60, 61, and 62. The Db Picc. part has a melodic line with a triplet in measure 60. The Alto and Tenor Saxophones continue their rhythmic pattern. The Baritone Trumpet and Trombone parts have a simple rhythmic accompaniment. The Percussion part features a consistent eighth-note pattern. The Electric Bass and Orchestra Hit parts provide harmonic support. The Solo part consists of a series of chords.

63

Alto Sax.
Ten. Sax.
Bar. Tpt.
Tbn.
Perc.
E. Bass
Orch. Hit
Solo

This musical system covers measures 63 and 64. It features eight staves: Alto Saxophone, Tenor Saxophone, Baritone Trumpet, Trombone, Percussion, Electric Bass, Orchestra Hit, and Solo. The key signature has one sharp (F#) and the time signature is 4/4. The Alto and Tenor Saxophones play a melodic line of eighth notes. The Baritone Trumpet and Trombone play a similar line but with a different rhythmic feel. The Percussion part consists of a steady eighth-note pattern. The Electric Bass and Orchestra Hit parts provide harmonic support with eighth notes. The Solo part features a complex, syncopated rhythm with chords.



65

Alto Sax.
Ten. Sax.
Bar. Tpt.
Tbn.
Perc.
E. Bass
Orch. Hit
Solo

This musical system covers measures 65 and 66. It features the same eight staves as the previous system. The key signature and time signature remain the same. The Alto and Tenor Saxophones continue their melodic line. The Baritone Trumpet and Trombone parts show some variation in their rhythmic patterns. The Percussion part maintains its eighth-note pattern. The Electric Bass and Orchestra Hit parts continue with their respective lines. The Solo part continues with its complex, syncopated rhythm.

67

Db Picc.

Alto Sax.

Ten. Sax.

Bar. Tpt.

Tbn.

Perc.

E. Bass

Orch. Hit

Solo



70

Db Picc.

Perc.

E. Bass

Solo



72

Db Picc.

Perc.

E. Bass

Solo

74

Db Picc.

Perc.

E. Bass

Solo



77

Db Picc.

Alto Sax.

Ten. Sax.

Bar. Tpt.

Tbn.

Perc.

E. Bass

Orch. Hit

Solo

79

Db Picc.

Alto Sax.

Ten. Sax.

Bar. Tpt.

Tbn.

Perc.

E. Bass

Orch. Hit

Solo

82

Db Picc.

Alto Sax.

Ten. Sax.

Bar. Tpt.

Tbn.

Perc.

E. Bass

Orch. Hit

Solo

85

D \flat Picc.

Alto Sax.

Ten. Sax.

Bar. Tpt.

Tbn.

Perc.

E. Bass

Orch. Hit

Solo

87

D \flat Picc.

Alto Sax.

Ten. Sax.

Bar. Tpt.

Tbn.

Perc.

E. Bass

Orch. Hit

Solo

Detailed description of the musical score: The score is divided into two systems, measures 85-86 and 87. The instruments are arranged in a standard orchestral layout. The top system (measures 85-86) includes D \flat Piccolo, Alto Saxophone, Tenor Saxophone, Baritone Trumpet, Trombone, Percussion, Electric Bass, Orchestral Hit, and Solo. The bottom system (measure 87) includes D \flat Piccolo, Alto Saxophone, Tenor Saxophone, Baritone Trumpet, Trombone, Percussion, Electric Bass, Orchestral Hit, and Solo. The key signature is one sharp (F#), and the time signature is 4/4. The Solo part features a complex rhythmic pattern with many beamed notes and rests. The Percussion part has a consistent rhythmic pattern with 'x' marks indicating specific sounds. The other instruments have various melodic and harmonic parts, with some rests in measure 87.

89

Db Picc.

Alto Sax.

Ten. Sax.

Bar. Tpt.

Tbn.

Perc.

E. Bass

Orch. Hit

Solo

91

Db Picc.

Alto Sax.

Ten. Sax.

Bar. Tpt.

Tbn.

Perc.

E. Bass

Orch. Hit

Solo

93

Db Picc.

Alto Sax.

Ten. Sax.

Bar. Tpt.

Tbn.

Perc.

E. Bass

Orch. Hit

Solo

95

Db Picc.

Alto Sax.

Ten. Sax.

Bar. Tpt.

Tbn.

Perc.

E. Bass

Orch. Hit

Solo

97

Db Picc.

Alto Sax.

Ten. Sax.

Bar. Tpt.

Tbn.

Perc.

E. Bass

Orch. Hit

Solo

99

Db Picc.

Alto Sax.

Ten. Sax.

Bar. Tpt.

Tbn.

Perc.

E. Bass

Orch. Hit

Solo

101

D \flat Picc.

Alto Sax.

Ten. Sax.

Bar. Tpt.

Tbn.

Perc.

E. Bass

Orch. Hit

Solo

103

D \flat Picc.

Alto Sax.

Ten. Sax.

Bar. Tpt.

Tbn.

Perc.

E. Bass

Orch. Hit

Solo

105

Alto Sax.

Ten. Sax.

Perc.

E. Bass

Solo



107

Alto Sax.

Ten. Sax.

Perc.

E. Bass

Solo



109

Alto Sax.

Ten. Sax.

Perc.

E. Bass

Solo

111

Alto Sax.
Ten. Sax.
Bar. Tpt.
Tbn.
Perc.
E. Bass
Orch. Hit
Solo

This musical system covers measures 111 and 112. It features eight staves: Alto Saxophone, Tenor Saxophone, Baritone Trumpet, Trombone, Percussion, Electric Bass, Orchestra Hit, and Solo. The key signature has one sharp (F#) and the time signature is 4/4. The Alto and Tenor Saxophones play a melodic line with eighth notes and slurs. The Baritone Trumpet and Trombone play a rhythmic accompaniment of eighth notes. The Percussion part consists of a steady eighth-note pattern with 'x' marks indicating cymbal hits. The Electric Bass plays a simple eighth-note line. The Orchestra Hit and Solo parts provide harmonic support with chords and rhythmic patterns.



113

Alto Sax.
Ten. Sax.
Bar. Tpt.
Tbn.
Perc.
E. Bass
Orch. Hit
Solo

This musical system covers measures 113 and 114. It features the same eight staves as the previous system. The key signature and time signature remain the same. The Alto and Tenor Saxophones continue their melodic line. The Baritone Trumpet and Trombone maintain their rhythmic accompaniment. The Percussion part continues with its eighth-note pattern. The Electric Bass plays a simple eighth-note line. The Orchestra Hit and Solo parts provide harmonic support with chords and rhythmic patterns.

115

Alto Sax.
Ten. Sax.
Bar. Tpt.
Tbn.
Perc.
E. Bass
Orch. Hit
Solo

This musical system covers measures 115 and 116. It features eight staves: Alto Saxophone, Tenor Saxophone, Baritone Trumpet, Trombone, Percussion, Electric Bass, Orchestra Hit, and Solo. The key signature has one sharp (F#) and the time signature is 4/4. The Alto and Tenor Saxophones play a melodic line with eighth notes and rests. The Baritone Trumpet and Trombone play a rhythmic pattern of eighth notes. The Percussion part consists of a steady eighth-note pattern with 'x' marks indicating cymbal hits. The Electric Bass plays a simple eighth-note line. The Orchestra Hit part plays a rhythmic pattern of eighth notes. The Solo part plays a complex rhythmic pattern with eighth notes and rests.



117

Alto Sax.
Ten. Sax.
Bar. Tpt.
Tbn.
Perc.
E. Bass
Orch. Hit
Solo

This musical system covers measures 117 and 118. It features the same eight staves as the previous system. The key signature has one sharp (F#) and the time signature is 4/4. The Alto and Tenor Saxophones play a melodic line with eighth notes and rests. The Baritone Trumpet and Trombone play a rhythmic pattern of eighth notes. The Percussion part consists of a steady eighth-note pattern with 'x' marks indicating cymbal hits. The Electric Bass plays a simple eighth-note line. The Orchestra Hit part plays a rhythmic pattern of eighth notes. The Solo part plays a complex rhythmic pattern with eighth notes and rests.

119

Alto Sax.

Ten. Sax.

Bar. Tpt.

Tbn.

Perc.

E. Bass

Orch. Hit

Solo

Detailed description: This block contains the musical notation for measures 119 and 120. The Alto Saxophone and Tenor Saxophone parts feature a rhythmic melody with eighth and sixteenth notes. The Baritone Trumpet and Trombone parts are mostly rests, with some accompaniment in the Trombone. The Percussion part has a consistent rhythmic pattern. The Electric Bass part provides a steady bass line. The Orchestra Hit part has rests. The Solo part features a complex, multi-measure rhythmic pattern.



121

Db Picc.

Alto Sax.

Ten. Sax.

Bar. Tpt.

Tbn.

Perc.

E. Bass

Orch. Hit

Solo

Detailed description: This block contains the musical notation for measures 121 and 122. The Eb Piccolo part has rests in measure 121 and enters in measure 122. The Alto Saxophone and Tenor Saxophone parts continue their rhythmic melody. The Baritone Trumpet and Trombone parts have more active accompaniment. The Percussion part continues its pattern. The Electric Bass part continues its bass line. The Orchestra Hit part has rests. The Solo part continues its complex rhythmic pattern.

130

Db Picc.
Alto Sax.
Ten. Sax.
Bar. Tpt.
Tbn.
Perc.
E. Bass
Orch. Hit
Solo

This system contains measures 130, 131, and 132. The Db Piccolo part has a melodic line with eighth notes. The Alto and Tenor Saxophones play a similar melodic line. The Baritone Trumpet and Trombone parts have a rhythmic accompaniment. The Percussion part has a steady eighth-note pattern. The Electric Bass part has a walking bass line. The Orchestra Hit part has a rhythmic accompaniment. The Solo part has a complex rhythmic pattern with many beamed notes.

133

Db Picc.
Alto Sax.
Ten. Sax.
Bar. Tpt.
Tbn.
Perc.
E. Bass
Orch. Hit
Solo

This system contains measures 133, 134, and 135. The Db Piccolo part has a melodic line with eighth notes. The Alto and Tenor Saxophones play a similar melodic line. The Baritone Trumpet and Trombone parts have a rhythmic accompaniment. The Percussion part has a steady eighth-note pattern. The Electric Bass part has a walking bass line. The Orchestra Hit part has a rhythmic accompaniment. The Solo part has a complex rhythmic pattern with many beamed notes.

135

Db Picc.
Alto Sax.
Ten. Sax.
Bar. Tpt.
Tbn.
Perc.
E. Bass
Orch. Hit
Solo

Detailed description: This system contains measures 135, 136, and 137. The Db Picc. part has a melodic line starting with a quarter note G4, followed by eighth notes. The Alto and Tenor Saxophones play a similar eighth-note pattern. The Baritone Trumpet and Trombone parts have a rhythmic accompaniment of eighth notes. The Percussion part features a consistent eighth-note pattern with 'x' marks indicating specific sounds. The Electric Bass part has a simple eighth-note line. The Orchestra Hit part has a rhythmic accompaniment. The Solo part consists of a series of chords, primarily triads and dyads, with some grace notes.

138

Db Picc.
Alto Sax.
Ten. Sax.
Bar. Tpt.
Tbn.
Perc.
E. Bass
Orch. Hit
Solo

Detailed description: This system contains measures 138, 139, and 140. In measure 138, the Db Picc. has a melodic line with a triplet of eighth notes. The Alto and Tenor Saxophones enter in measure 139 with a sixteenth-note pattern. The Baritone Trumpet and Trombone parts have a rhythmic accompaniment. The Percussion part continues with its eighth-note pattern. The Electric Bass part has a simple eighth-note line. The Orchestra Hit part has a rhythmic accompaniment. The Solo part consists of a series of chords, primarily triads and dyads, with some grace notes.

141

Alto Sax.

Ten. Sax.

Perc.



143

Alto Sax.

Ten. Sax.

Perc.

E. Bass

Solo



145

Alto Sax.

Ten. Sax.

Perc.

E. Bass

Solo

147

Alto Sax.

Ten. Sax.

Bar. Tpt.

Tbn.

Perc.

E. Bass

Orch. Hit

Solo



149

Alto Sax.

Ten. Sax.

Bar. Tpt.

Tbn.

Perc.

E. Bass

Orch. Hit

Solo

151

Alto Sax.
Ten. Sax.
Bar. Tpt.
Tbn.
Perc.
E. Bass
Orch. Hit
Solo

This musical system covers measures 151 and 152. It features eight staves: Alto Saxophone, Tenor Saxophone, Baritone Trumpet, Trombone, Percussion, Electric Bass, Orchestra Hit, and Solo. The key signature has one sharp (F#) and the time signature is 4/4. The Alto Saxophone and Tenor Saxophone parts play a melodic line with eighth notes and quarter notes. The Baritone Trumpet and Trombone parts play a similar melodic line. The Percussion part has a steady eighth-note pattern. The Electric Bass part plays a simple bass line. The Orchestra Hit part plays a rhythmic pattern. The Solo part plays a complex, multi-measure rest pattern.



153

Alto Sax.
Ten. Sax.
Bar. Tpt.
Tbn.
Perc.
E. Bass
Orch. Hit
Solo

This musical system covers measures 153 and 154. It features the same eight staves as the previous system. The key signature has one sharp (F#) and the time signature is 4/4. The Alto Saxophone and Tenor Saxophone parts play a melodic line with eighth notes and quarter notes. The Baritone Trumpet and Trombone parts play a similar melodic line. The Percussion part has a steady eighth-note pattern. The Electric Bass part plays a simple bass line. The Orchestra Hit part plays a rhythmic pattern. The Solo part plays a complex, multi-measure rest pattern.

155

Alto Sax.
Ten. Sax.
Bar. Tpt.
Tbn.
Perc.
E. Bass
Orch. Hit
Solo

Detailed description: This block contains the musical notation for measures 155 and 156. It features eight staves: Alto Saxophone, Tenor Saxophone, Baritone Trumpet, Trombone, Percussion, Electric Bass, Orchestral Hit, and Solo. The key signature has one sharp (F#). The Alto and Tenor Saxophones play a rhythmic melody with eighth and sixteenth notes. The Baritone Trumpet and Trombone parts are mostly rests. The Percussion part has a consistent eighth-note pattern with 'x' marks. The Electric Bass part has a simple bass line. The Orchestral Hit part has a few notes. The Solo part has a complex, multi-voice texture with many notes and rests.



157

Alto Sax.
Ten. Sax.
Bar. Tpt.
Tbn.
Perc.
E. Bass
Orch. Hit
Solo

Detailed description: This block contains the musical notation for measures 157 and 158. It features the same eight staves as the previous block. The Alto and Tenor Saxophones continue their rhythmic melody. The Baritone Trumpet and Trombone parts now have more active lines, including sixteenth-note runs and triplets. The Percussion part continues its eighth-note pattern. The Electric Bass part has a more active line with triplets and sixteenth notes. The Orchestral Hit part has a more complex texture. The Solo part has a very dense texture with many notes and rests, including triplets and sixteenth notes.

Spanish - Eddy Herrera Demasiado romantica

Piccolo in D \flat

$\text{♩} = 136,000153$ $\text{♩} = 136,000153$

2

3

6

7

8

19

24

28

32

36

40

45

49

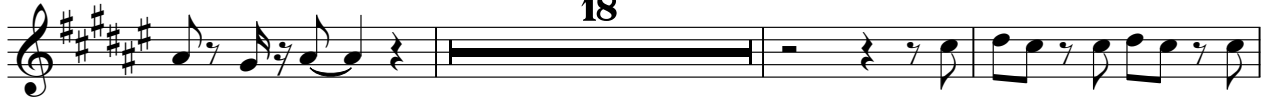
V.S.

Piccolo in D \flat

99



103



124



128



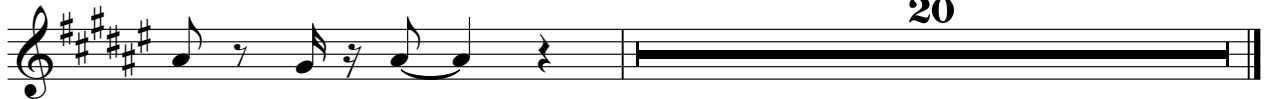
132



136



139



Spanish - Eddy Herrera Demasiado romantica

Alto Saxophone

$\text{♩} = 136,000153$ $\text{♩} = 136,000153$

3

10

13

16

19 16

37

40

45

47

50

V.S.

52



54



56



58



60



63



66



77



80



85





144



146



148



150



152



154



156



158



Tenor Saxophone

Spanish - Eddy Herrera Demasiado romantica

♩ = 136,000153 ♩ = 136,000153

3 2 2

11

14

17

16

36

40

45

48

51

54

V.S.



98

101

104

106

108

110

112

114

116

119

V.S.

Tenor Saxophone

122

8

133

137

141

143

145

147

150

152

154

Tenor Saxophone

156



158



Baroque Trumpet

Spanish - Eddy Herrera Demasiado romantica

$\text{♩} = 136,000153$ $\text{♩} = 136,000153$

7

11

14

17

16

36

40

45

48

52



57



61



64



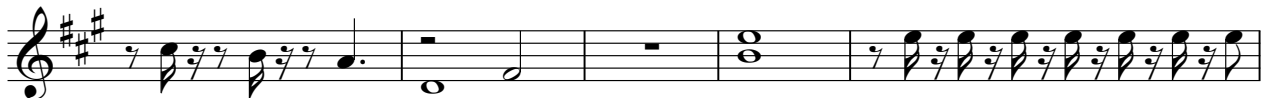
67



78



82



87



92



97



102

7

111

114

116

118

122

8

133

136

2

7

147



Trombone

Spanish - Eddy Herrera Demasiado romantica

♩ = 136,000153 ♩ = 136,000153

7

11

14

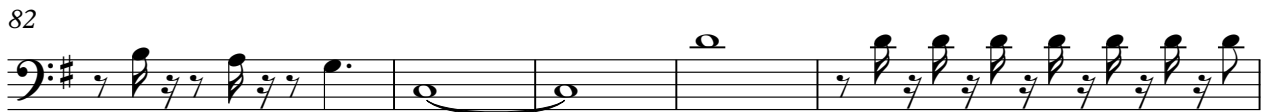
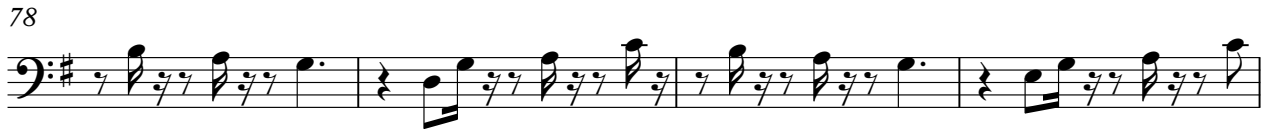
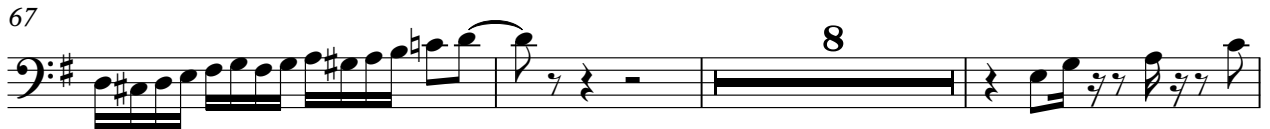
16

36

40

45

48



Trombone

102



111



113



115



117



120



131



135



139



147



150



153



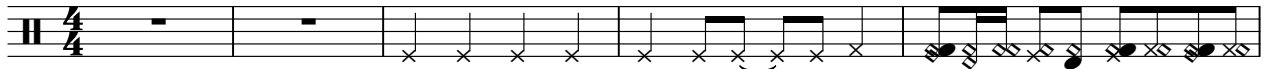
156



Spanish - Eddy Herrera Demasiado romantica

Percussion

♩ = 136,000153 ♩ = 136,000153



6



9



12



15



18



21



24



27



30



V.S.

33



36



38



40



43



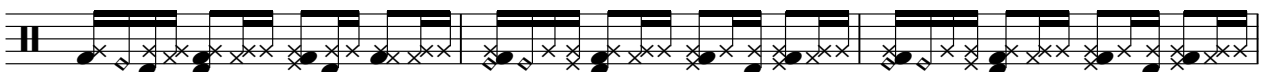
46



49



52



55



57



60



63



66



69



72



75



78



80



82



85



V.S.

88



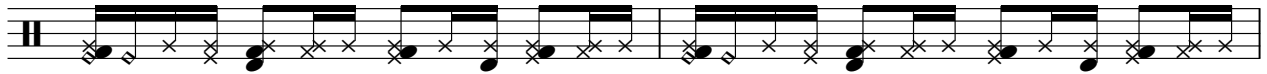
91



94



96



98



100



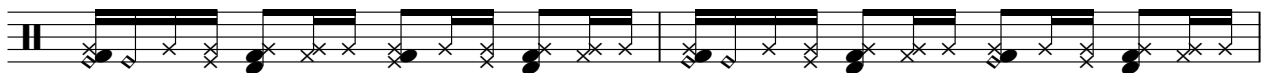
103



106



109



111



113



115



117



119



121



123



126



129



132



134

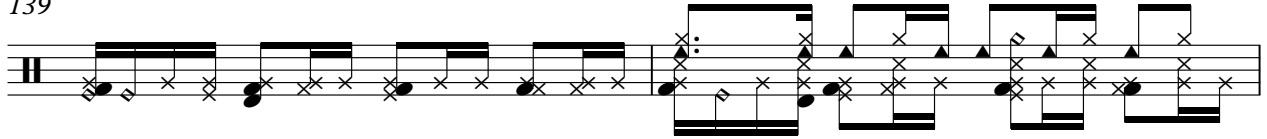


V.S.

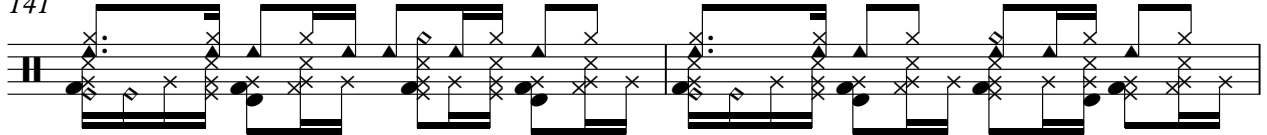
136



139



141



143



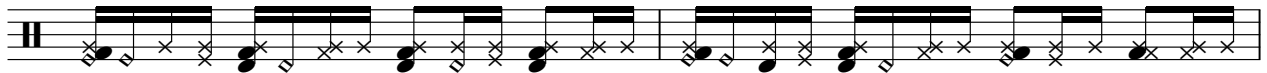
146



148



150



152



155



157



Fretless Electric Bass

Spanish - Eddy Herrera Demasiado romantica

♩ = 136,000 ~~136,000~~ 136,000 153

2

9

12

15

18

21

24

27

30

33

V.S.

36



39



42



45



48



51



55



58



61



64



67



70



73



76



79



82



85



88



91



94



V.S.

97



100



103



106



109



112



115



118



121



124



127



130



133



136



140



146



149



152



155



158



♩ = 136,000153 ♩ = 136,000153

8



12

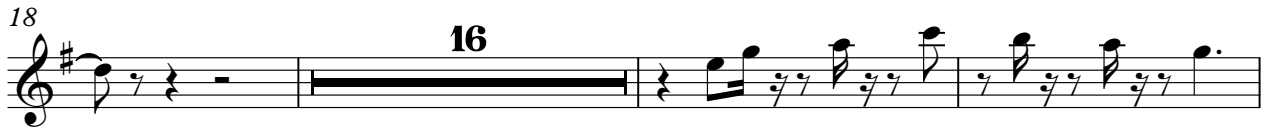


15



18

16



37



41



46



49



52



57



61



64



67



78



82



87



92



97



102

7

112

114

116

118

122

8

133

136

2 7

147



150



153



156



FX 5 (Brightness)

Spanish - Eddy Herrera Demasiado romantica

♩ = 136,000 136,000 153

2

11

8

25

131

Spanish - Eddy Herrera Demasiado romantica

Solo

♩ = 136,000 5B36,000153

2

7

10

13

16

19

21

23

26

29

V.S.

Musical score for guitar solo, measures 31-52. The score is written in treble clef with a key signature of one sharp (F#). The music consists of a series of chords and melodic lines, primarily using eighth and sixteenth notes. The notation includes various articulations such as slurs, ties, and accents. The piece is marked 'Solo'.

Measures 31-32: Introduction of the solo with a series of chords and eighth notes.

Measures 33-34: Continuation of the solo with more complex chordal structures and melodic runs.

Measures 35-36: Further development of the solo with intricate chordal patterns.

Measures 37-38: Continuation of the solo with a focus on rhythmic patterns.

Measures 39-41: Solo continues with a mix of chords and melodic lines.

Measures 42-44: Solo continues with a focus on chordal textures.

Measures 45-47: Solo continues with a mix of chords and melodic lines.

Measures 48-50: Solo continues with a focus on rhythmic patterns.

Measures 51-52: Final measures of the solo, concluding with a series of chords.

55

58

61

64

67

70

72

75

78

81

V.S.

84

87

90

92

94

97

100

103

105

107

Musical score for guitar solo, measures 109-128. The score is written in treble clef with a key signature of one sharp (F#). The music consists of a series of chords and melodic lines, primarily using eighth and sixteenth notes. The notation includes various rhythmic values, accidentals, and dynamic markings. The measures are numbered 109, 111, 113, 115, 117, 119, 121, 123, 126, and 128. The piece concludes with the instruction 'V.S.' (Vivace) at the bottom right.

V.S.

130



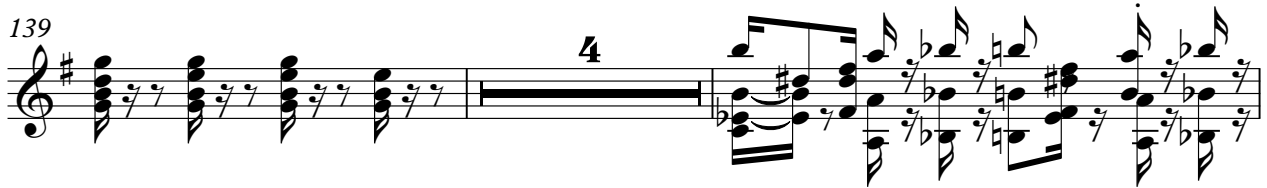
133



136



139



145



147



149



151



153



155



157

Solo

7

6 3

6 3