

Special D - Come with me v1

♩ = 140,000137
PsmPlayer V3.80

Percussion

Flexatone

Solo

3

Perc.

Flex.

Solo

5

Perc.

Flex.

Solo

2

7

Perc.

Flex.

Solo

6 6 6

9

Perc.

Flex.

Solo

6

11

Perc.

Flex.

Solo

6

13

Perc.

Flex.

Solo

6

15

Perc. Flex. Solo

Detailed description: This system contains measures 15 and 16. The Percussion staff (top) uses a snare drum icon and contains rhythmic patterns with 'x' marks above notes. The Flex. staff (middle) uses a treble clef and contains a series of vertical lines representing fretted notes. The Solo staff (bottom) uses a treble clef and contains a melodic line with a key signature of one sharp (F#) and a 7/8 time signature.

16

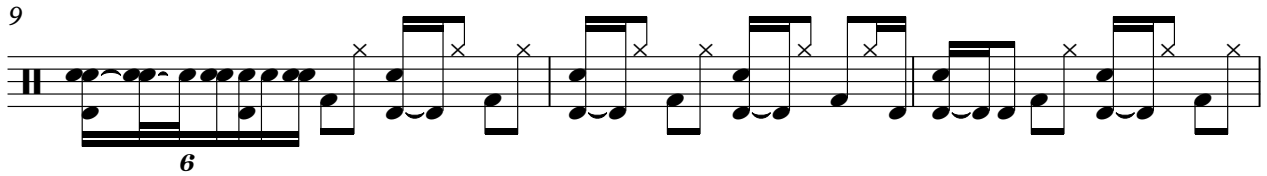
Perc. Flex. Solo

Detailed description: This system contains measures 17 and 18. The Percussion staff (top) continues the rhythmic pattern with 'x' marks. The Flex. staff (middle) continues the vertical line pattern. The Solo staff (bottom) continues the melodic line with a key signature of one sharp (F#) and a 7/8 time signature.

Percussion

Special D - Come with me v1

♩ = 140,000137
PsmPlayer V3.80



♩ = 140,000137

The first staff of music begins with a treble clef, a key signature of one sharp (F#), and a 3/4 time signature. It contains four measures of music, each with a triplet of eighth notes. The notes are D4, F#4, and A4.

5

The second staff of music starts at measure 5 and continues with the same triplet eighth note pattern (D4, F#4, A4) for four measures.

9

The third staff of music starts at measure 9 and continues with the same triplet eighth note pattern (D4, F#4, A4) for four measures.

13

The fourth staff of music starts at measure 13 and continues with the same triplet eighth note pattern (D4, F#4, A4) for four measures.

15

The fifth staff of music starts at measure 15. It continues with the triplet eighth note pattern (D4, F#4, A4) for three measures, followed by a final measure containing a quarter rest and a whole rest.

Solo

Special D - Come with me v1

♩ = 140,000137

4

6

8

10

13

15