

Steve - AFFAIRS OF THE HEART

$\text{♩} = 129,000076$

Melody
Drums
Keyboard 2
Guitar 1
Bass
 $\text{♩} = 129,000076$
Keyboard 1

This system contains the first three measures of the piece. The tempo is marked as 129,000076. The score includes staves for Melody, Drums, Keyboard 2, Guitar 1, Bass, and Keyboard 1. The Melody and Keyboard 2 staves are mostly empty. The Drums staff shows a complex rhythmic pattern with many 'x' marks. The Guitar 1 staff has a melodic line starting in the second measure. The Bass staff has a steady eighth-note line. The Keyboard 1 staff is empty.

4

Melody
Drums
Guitar 1
Bass
Keyboard 1

This system contains measures 4 through 6. The tempo remains 129,000076. The Melody staff has a melodic line starting in measure 4. The Drums staff continues with its complex pattern. The Guitar 1 staff has a melodic line with a long note in measure 6. The Bass staff continues with its eighth-note line. The Keyboard 1 staff has a few notes in measure 6.

7

Melody
Drums
Guitar 1
Bass
Keyboard 1

Detailed description: This block contains the musical notation for measures 7 and 8. The score is arranged in five staves. The Melody staff (treble clef) shows a sequence of eighth and quarter notes. The Drums staff (percussion clef) features a complex rhythmic pattern with 'x' marks indicating cymbal hits. The Guitar 1 staff (treble clef) has a sparse accompaniment with some chords and single notes. The Bass staff (bass clef) plays a steady eighth-note line. The Keyboard 1 staff (treble clef) provides harmonic support with chords and single notes.

9

Melody
Drums
Guitar 1
Bass
Keyboard 1

Detailed description: This block contains the musical notation for measures 9 and 10. The Melody staff (treble clef) continues with eighth and quarter notes. The Drums staff (percussion clef) maintains its rhythmic pattern. The Guitar 1 staff (treble clef) features a more active line with eighth notes and some sustained notes. The Bass staff (bass clef) continues with its eighth-note line. The Keyboard 1 staff (treble clef) plays chords and single notes, providing harmonic support.

12

Melody
Drums
Guitar 1
Bass
Keyboard 1

Detailed description: This system of music covers measures 12 and 13. The Melody staff (treble clef) has a whole rest in measure 12 and a quarter rest in measure 13, followed by a quarter note G4 in measure 14. The Drums staff (percussion clef) features a consistent pattern of eighth notes with 'x' marks above them, indicating cymbal hits. The Guitar 1 staff (treble clef) plays a rhythmic pattern of eighth notes, including some beamed eighth notes and a dotted quarter note. The Bass staff (bass clef) plays a steady eighth-note line. The Keyboard 1 staff (treble clef) plays a rhythmic pattern of eighth notes, alternating between quarter and eighth notes.

14

Melody
Drums
Guitar 1
Bass
Keyboard 1

Detailed description: This system of music covers measures 14 and 15. The Melody staff (treble clef) has a quarter note G4 in measure 14, followed by a half note G4 in measure 15. The Drums staff (percussion clef) continues the eighth-note pattern with cymbal hits. The Guitar 1 staff (treble clef) has a whole note chord in measure 14, indicated by a large oval, and a whole rest in measure 15. The Bass staff (bass clef) continues the eighth-note line. The Keyboard 1 staff (treble clef) has a quarter note in measure 14 and a whole rest in measure 15.

16

Melody
Drums
Guitar 1
Bass
Keyboard 1

Detailed description: This system of music covers measures 16 and 17. The Melody line (treble clef) is mostly silent, with a few notes in measure 17. The Drums line (snare drum) features a consistent pattern of eighth notes with 'x' marks above them, indicating cymbal hits. The Guitar 1 line (treble clef) plays a series of eighth notes, some with slurs. The Bass line (bass clef) plays a steady eighth-note pattern. The Keyboard 1 line (treble clef) plays a rhythmic pattern of eighth notes with slurs.

18

Melody
Drums
Guitar 1
Bass
Keyboard 1

Detailed description: This system of music covers measures 18, 19, and 20. The Melody line (treble clef) has a few notes in measure 18 and then rests. The Drums line (snare drum) continues with the eighth-note pattern and cymbal hits. The Guitar 1 line (treble clef) has a long, sustained note in measure 18, followed by eighth notes in measure 19. The Bass line (bass clef) continues with the eighth-note pattern. The Keyboard 1 line (treble clef) has a few notes in measure 18 and then rests.

21

Melody

Drums

Guitar 1

Bass

Keyboard 1

23

Melody

Drums

Guitar 1

Bass

Keyboard 1

25

Melody

Drums

Bass

Keyboard 1

27

Melody

Drums

Bass

Keyboard 1

29

Melody

Drums

Bass

Keyboard 1

31

Melody

Drums

Bass

Keyboard 1

33

Melody

Drums

Bass

Keyboard 1

35

Melody

Drums

Bass

Keyboard 1

37

Melody

Drums

Bass

Keyboard 1

39

Melody

Drums

Bass

Keyboard 1

41

Melody

Drums

Bass

Keyboard 1

43

Melody

Drums

Bass

Keyboard 1

45

Melody

Drums

Bass

Keyboard 1

48

Melody

Drums

Bass

Keyboard 1

51

Melody

Drums

Bass

Keyboard 1

53

Melody

Drums

Bass

Keyboard 1

55

Melody

Drums

Bass

Keyboard 1

57

Melody

Drums

Bass

Keyboard 1

60

Melody

Drums

Bass

Keyboard 1

62

Melody

Drums

Bass

Keyboard 1

64

Melody

Drums

Bass

Keyboard 1

66

Melody

Drums

Bass

68

Melody

Drums

Bass

Keyboard 1

70

Melody

Drums

Bass

Keyboard 1

72

Melody

Drums

Bass

Keyboard 1

74

Melody

Drums

Bass

76

Melody

Drums

Bass

Keyboard 1

79

Melody

Drums

Bass

Keyboard 1

81

Melody

Drums

Bass

Keyboard 1

84

Drums

Keyboard 2

Bass

Keyboard 1

86

Drums

Keyboard 2

Bass

Keyboard 1

88

Drums

Keyboard 2

Bass

Keyboard 1

90

Drums

Keyboard 2

Bass

Keyboard 1

92

Drums

Keyboard 2

Bass

Keyboard 1

94

Drums

Keyboard 2

Bass

Keyboard 1

96

Melody

Drums

Keyboard 2

Bass

Keyboard 1

98

Melody

Drums

Bass

100

Melody

Drums

Bass

102

Melody

Drums

Bass

104

Melody

Drums

Bass

106

Melody

Drums

Bass

109

Melody

Drums

Bass

111

Melody

Drums

Bass

113

Melody

Drums

Bass

115

Melody

Drums

Bass

This system covers measures 115 to 117. The Melody line is in treble clef with a key signature of one flat and a 4/4 time signature. It features a series of eighth and quarter notes, ending with a quarter rest. The Drums part shows a complex pattern with various symbols including 'x' and 'a' on a double bass staff. The Bass part is in bass clef, playing a steady eighth-note line that concludes with a quarter rest.

118

Melody

Drums

Bass

Keyboard 1

This system covers measures 118 and 119. The Melody line has a quarter rest in measure 118, followed by a quarter note in measure 119. The Drums part continues with its established pattern. The Bass part has a quarter rest in measure 118 and a quarter note in measure 119. Keyboard 1 is in treble clef, playing a single half note in each measure.

120

Melody

Drums

Bass

Keyboard 1

This system covers measures 120 to 122. The Melody line plays a quarter-note line in measure 120, followed by a quarter rest in measure 121 and a full bar rest in measure 122. The Drums part continues with its established pattern. The Bass part plays a steady eighth-note line throughout. Keyboard 1 is in treble clef, playing a single half note in each measure.

123

Melody

Drums

Bass

Keyboard 1

125

Melody

Drums

Bass

Keyboard 1

127

Melody

Drums

Bass

Keyboard 1

129

Melody

Drums

Bass

Keyboard 1

131

Melody

Drums

Bass

Keyboard 1

133

Melody

Drums

Bass

Keyboard 1

135

Drums

Bass

Keyboard 1

138

Drums

Bass

Keyboard 1

140

Drums

Bass

Keyboard 1

142

Drums

Bass

Keyboard 1

This musical score covers measures 142 and 143. The Drums part features a consistent pattern of snare and hi-hat hits. The Bass part consists of a steady eighth-note line that descends from the first measure to the second. The Keyboard 1 part is simple, with two whole notes, one in each measure.

144

Drums

Bass

Keyboard 1

This musical score covers measures 144 through 147. The Drums part continues with snare and hi-hat patterns. The Bass part maintains a descending eighth-note line. The Keyboard 1 part features a melodic line with a slur, starting with a whole note and moving through quarter notes in the subsequent measures.

Steve - AFFAIRS OF THE HEART

Melody

♩ = 129,000076

5

2

11

17

23

29

34

40

46

2

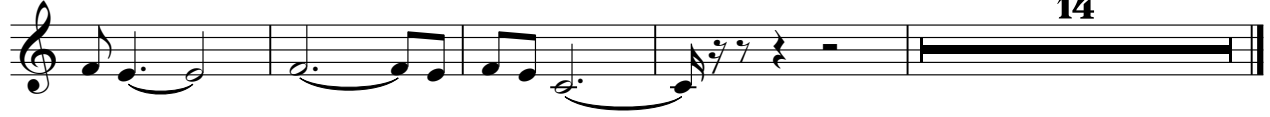
53

57



Melody

130



Steve - AFFAIRS OF THE HEART

Drums

♩ = 129,000076

4

7

10

13

16

19

22

25

28

V.S.

31

34

37

40

43

46

49

52

55

58

61

64

67

70

73

76

79

82

85

88

V.S.

90

92

94

97

100

103

106

109

112

115

118

121

124

127

130

133

136

139

142

Steve - AFFAIRS OF THE HEART

Guitar 1

♩ = 129,000076

5

10

16

21

24

123

Steve - AFFAIRS OF THE HEART

Bass

♩ = 129,000076



5



9



13



17



21



25



29



32



35



V.S.

38



42



45



49



53



57



61



65



68



71



74



78



81



85



89



93



97



101



105



109



V.S.

113



117



121



125



129



133



137



141



144



Steve - AFFAIRS OF THE HEART

Keyboard 1

♩ = 129,000076

4

9

13

17

21

25

29

36

45

52

Keyboard 1

56



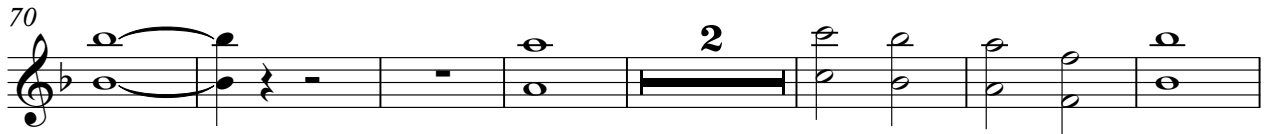
60



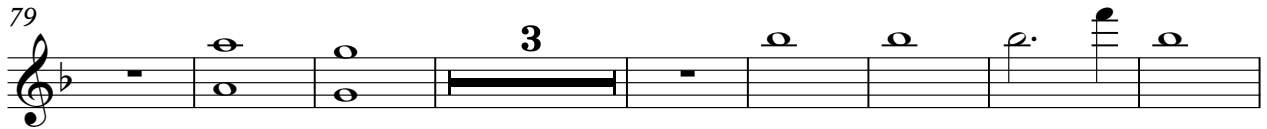
64



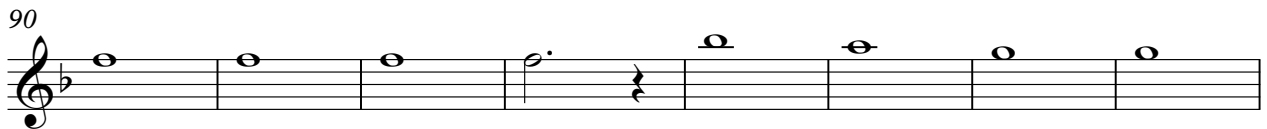
70



79



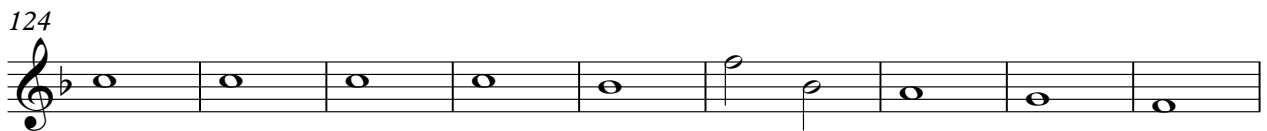
90



98



124



133



141

