

Steve Miller Band - abracada

0.0"
1.1,00
93 bars

♩ = 127,000252

TenorSax

Fr Horn

SynBass

Clarine2

♩ = 127,000252

TenorSax

Fr Horn

SynBass

Clarine2

5

Clarinet1

TenorSax

Fr Horn

SynBass

Clarinet2

3

3

3

Detailed description: This system contains measures 5 and 6 of a musical score. Measure 5 is marked with a '5' above the first staff. The Clarinet1 part has a melodic line with a quarter rest in measure 5 and a quarter note in measure 6. The TenorSax, Fr Horn, and Clarinet2 parts play a steady eighth-note accompaniment. The SynBass part has a quarter rest in measure 5 and a quarter note in measure 6. Measure 6 features a triplet of eighth notes in the TenorSax, Fr Horn, and Clarinet2 parts, indicated by a '3' above the notes.

7

Clarinet1

TenorSax

Fr Horn

SynBass

Clarinet2

3

3

3

Detailed description: This system contains measures 7 and 8 of a musical score. Measure 7 is marked with a '7' above the first staff. The Clarinet1 part has a melodic line with a quarter rest in measure 7 and a quarter note in measure 8. The TenorSax, Fr Horn, and Clarinet2 parts play a steady eighth-note accompaniment. The SynBass part has a quarter rest in measure 7 and a quarter note in measure 8. Measure 8 features a triplet of eighth notes in the TenorSax, Fr Horn, and Clarinet2 parts, indicated by a '3' above the notes. The SynBass part also has a triplet of eighth notes, indicated by a '3' below the notes.

9

Clarinet1

TenorSax

Fr Horn

SynBass

Clarinet2

11

Clarinet1

TenorSax

Fr Horn

SynBass

Clarinet2

13

Clarinet1
TenorSax
Fr Horn
SynBass
Clarinet2

This musical system covers measures 13 and 14. It features five staves: Clarinet 1 (top), Tenor Saxophone, French Horn, Synthesizer Bass, and Clarinet 2 (bottom). Measure 13 shows a melodic line in Clarinet 1 with eighth notes and a quarter note, while the other instruments play a rhythmic accompaniment of eighth notes. Measure 14 continues the accompaniment, with Clarinet 1 playing a quarter note followed by a quarter rest.

15

Clarinet1
TenorSax
Fr Horn
SynBass
Clarinet2

This musical system covers measures 15 and 16. It features the same five staves as the previous system. Measure 15 shows Clarinet 1 playing a melodic line with eighth notes and a quarter note, while the other instruments continue their rhythmic accompaniment. Measure 16 shows Clarinet 1 playing a quarter note followed by a quarter rest, with the other instruments continuing their accompaniment.

17

Clarinet1
TenorSax
Fr Horn
SynBass
Clarinet2

This musical system covers measures 17 and 18. It features five staves: Clarinet1 (treble clef), TenorSax (treble clef), Fr Horn (treble clef), SynBass (bass clef), and Clarinet2 (treble clef). Measure 17 shows Clarinet1 with a melodic line starting on a quarter rest, followed by eighth and quarter notes. TenorSax and Clarinet2 play a steady eighth-note accompaniment. Fr Horn plays a similar eighth-note line. SynBass has a quarter rest in measure 17 and enters in measure 18 with a melodic phrase. Measure 18 continues the accompaniment for TenorSax and Clarinet2, while Clarinet1 has a melodic phrase and SynBass continues its melodic line.

19

Clarinet1
TenorSax
Fr Horn
SynBass
Clarinet2

This musical system covers measures 19 and 20. It features five staves: Clarinet1 (treble clef), TenorSax (treble clef), Fr Horn (treble clef), SynBass (bass clef), and Clarinet2 (treble clef). Measure 19 shows Clarinet1 with a melodic line of eighth notes. TenorSax and Clarinet2 play a steady eighth-note accompaniment. Fr Horn plays a similar eighth-note line. SynBass has a quarter rest in measure 19 and enters in measure 20 with a melodic phrase. Measure 20 continues the accompaniment for TenorSax and Clarinet2, while Clarinet1 has a melodic phrase and SynBass continues its melodic line.

21

Clarinet1

TenorSax

Fr Horn

SynBass

Clarinet2

23

Clarinet1

TenorSax

Fr Horn

SynBass

Clarinet2

25

Clarinet1
TenorSax
Fr Horn
SynBass
Clarinet2

Detailed description: This block contains the musical notation for measures 25 and 26. It features five staves: Clarinet1 (top), TenorSax, Fr Horn, SynBass, and Clarinet2 (bottom). Clarinet1 has a melodic line starting with a dotted quarter note, followed by eighth notes, and a rest in measure 26. TenorSax, Fr Horn, and Clarinet2 play a rhythmic accompaniment of eighth notes. SynBass has a melodic line with a triplet of eighth notes in measure 25 and a quarter note in measure 26. A key signature change to one sharp (F#) occurs at the beginning of measure 26.

27

Clarinet1
TenorSax
Fr Horn
SynBass
Clarinet2

Detailed description: This block contains the musical notation for measures 27 and 28. It features five staves: Clarinet1 (top), TenorSax, Fr Horn, SynBass, and Clarinet2 (bottom). Clarinet1 has a melodic line with a triplet of eighth notes in measure 27 and a quarter note in measure 28. TenorSax, Fr Horn, and Clarinet2 play a rhythmic accompaniment of eighth notes. SynBass has a melodic line with eighth notes in measure 27 and a quarter note in measure 28. A key signature change to one sharp (F#) occurs at the beginning of measure 28.

29

Clarinet1

TenorSax

Fr Horn

SynBass

Clarinet2

This system contains measures 29 and 30. Clarinet 1 (top staff) has a melodic line with eighth and quarter notes, including rests. Tenor Sax (second staff) plays a rhythmic accompaniment of eighth notes. Fr Horn (third staff) plays a rhythmic accompaniment of eighth notes with some accidentals. SynBass (fourth staff) has a bass line with eighth notes and rests. Clarinet 2 (bottom staff) plays a rhythmic accompaniment of eighth notes with some accidentals.

31

Clarinet1

TenorSax

Fr Horn

SynBass

Clarinet2

This system contains measures 31 and 32. Clarinet 1 (top staff) has a melodic line with eighth and quarter notes, including rests. Tenor Sax (second staff) plays a rhythmic accompaniment of eighth notes. Fr Horn (third staff) plays a rhythmic accompaniment of eighth notes. SynBass (fourth staff) has a bass line with eighth notes and rests. Clarinet 2 (bottom staff) plays a rhythmic accompaniment of eighth notes.

33

Clarinet1
TenorSax
Fr Horn
SynBass
Clarinet2

This musical system covers measures 33 and 34. It features five staves: Clarinet1 (treble clef), TenorSax (treble clef), Fr Horn (treble clef), SynBass (bass clef), and Clarinet2 (treble clef). Measure 33 shows a complex rhythmic pattern with eighth and sixteenth notes, including a triplet in the Clarinet1 and SynBass parts. Measure 34 continues the pattern with similar rhythmic structures and triplet markings.

35

Clarinet1
TenorSax
Fr Horn
SynBass
Clarinet2

This musical system covers measures 35 and 36. It features five staves: Clarinet1 (treble clef), TenorSax (treble clef), Fr Horn (treble clef), SynBass (bass clef), and Clarinet2 (treble clef). Measure 35 shows a complex rhythmic pattern with eighth and sixteenth notes, including a triplet in the TenorSax, Fr Horn, and Clarinet2 parts. Measure 36 continues the pattern with similar rhythmic structures and triplet markings.

37

Clarinet1

TenorSax

Fr Horn

SynBass

Clarinet2

39

Clarinet1

TenorSax

Fr Horn

SynBass

Clarinet2

41

Clarinet1
TenorSax
Fr Horn
SynBass
Clarinet2

This musical system covers measures 41 and 42. It features five staves: Clarinet1 (treble clef), TenorSax (treble clef), Fr Horn (treble clef), SynBass (bass clef), and Clarinet2 (treble clef). Measure 41 shows Clarinet1 with a triplet of eighth notes, TenorSax with a steady eighth-note pattern, Fr Horn with a steady eighth-note pattern, SynBass with a triplet of eighth notes, and Clarinet2 with a steady eighth-note pattern. Measure 42 continues these patterns with some melodic variation in the Clarinet1 and SynBass parts.

43

Clarinet1
TenorSax
Fr Horn
SynBass
Clarinet2

This musical system covers measures 43 and 44. It features the same five staves as the previous system. Measure 43 shows Clarinet1 with a melodic phrase, TenorSax with a steady eighth-note pattern, Fr Horn with a steady eighth-note pattern, SynBass with a melodic phrase, and Clarinet2 with a steady eighth-note pattern. Measure 44 continues these patterns with some melodic variation in the Clarinet1 and SynBass parts.

45

Clarinet1

TenorSax

Fr Horn

SynBass

Clarinet2

47

Clarinet1

TenorSax

Fr Horn

SynBass

Clarinet2

49

Clarinet1

TenorSax

Fr Horn

SynBass

Clarinet2

51

Clarinet1

TenorSax

Fr Horn

SynBass

Clarinet2

53

Clarinet1

TenorSax

Fr Horn

SynBass

Clarinet2

55

Clarinet1

TenorSax

Fr Horn

SynBass

Clarinet2

57

Clarinet1
TenorSax
Fr Horn
SynBass
Clarinet2

This musical system covers measures 57 and 58. It features five staves: Clarinet1 (treble clef), TenorSax (treble clef), Fr Horn (treble clef), SynBass (bass clef), and Clarinet2 (treble clef). The key signature has one sharp (F#). Measure 57 shows active melodic lines for Clarinet1, TenorSax, Fr Horn, and Clarinet2, with SynBass playing a rhythmic pattern. Measure 58 continues the patterns, with a repeat sign at the beginning of the measure.

59

Clarinet1
TenorSax
Fr Horn
SynBass
Clarinet2

This musical system covers measures 59 and 60. It features five staves: Clarinet1 (treble clef), TenorSax (treble clef), Fr Horn (treble clef), SynBass (bass clef), and Clarinet2 (treble clef). The key signature has one sharp (F#). Measure 59 shows Clarinet1 with a melodic phrase, while other instruments continue their patterns. Measure 60 features a triplet in the SynBass staff and active lines for all other instruments.

61

Clarinet1

TenorSax

Fr Horn

SynBass

Clarinet2

63

Clarinet1

TenorSax

Fr Horn

SynBass

Clarinet2

65

Clarinet1

TenorSax

Fr Horn

SynBass

Clarinet2

Detailed description: This system contains measures 65 and 66. Clarinet 1 starts with a quarter rest in measure 65, followed by a quarter note in measure 66. Tenor Sax and French Horn play a continuous eighth-note triplet pattern across both measures. Syn Bass has a quarter rest in measure 65 and a quarter note in measure 66. Clarinet 2 plays a continuous eighth-note triplet pattern across both measures.

67

Clarinet1

TenorSax

Fr Horn

SynBass

Clarinet2

Detailed description: This system contains measures 67 and 68. Clarinet 1 has a quarter note in measure 67 and a quarter note triplet in measure 68. Tenor Sax and French Horn continue with eighth-note triplet patterns. Syn Bass has a quarter note in measure 67 and a quarter note triplet in measure 68. Clarinet 2 continues with eighth-note triplet patterns.

69

Clarinet1

TenorSax

Fr Horn

SynBass

Clarinet2

71

Clarinet1

TenorSax

Fr Horn

SynBass

Clarinet2

73

Clarinet1
TenorSax
Fr Horn
SynBass
Clarinet2

This musical system covers measures 73 and 74. It features five staves: Clarinet1 (treble clef), TenorSax (treble clef), Fr Horn (treble clef), SynBass (bass clef), and Clarinet2 (treble clef). Clarinet1 has a melodic line with eighth and quarter notes. TenorSax, Fr Horn, and Clarinet2 play a rhythmic accompaniment of eighth notes. SynBass has a sparse line with quarter notes and rests.

75

Clarinet1
TenorSax
Fr Horn
SynBass
Clarinet2

This musical system covers measures 75 and 76. It features five staves: Clarinet1 (treble clef), TenorSax (treble clef), Fr Horn (treble clef), SynBass (bass clef), and Clarinet2 (treble clef). Clarinet1 has a melodic line with eighth notes and rests. TenorSax, Fr Horn, and Clarinet2 play a rhythmic accompaniment of eighth notes. SynBass has a sparse line with quarter notes and rests.

77

Clarinet1

TenorSax

Fr Horn

SynBass

Clarinet2

79

Clarinet1

TenorSax

Fr Horn

SynBass

Clarinet2

81

Clarinet1
TenorSax
Fr Horn
SynBass
Clarinet2

This musical system covers measures 81 and 82. Clarinet 1 has a rest in measure 81 and enters in measure 82 with a melodic line. Tenor Saxophone, French Horn, and Clarinet 2 play a rhythmic accompaniment of eighth notes. The SynBass part provides a bass line with eighth notes and rests.

83

Clarinet1
TenorSax
Fr Horn
SynBass
Clarinet2

This musical system covers measures 83 and 84. Clarinet 1 plays a melodic line with a long slur across both measures. Tenor Saxophone, French Horn, and Clarinet 2 continue with their rhythmic accompaniment. The SynBass part continues with its bass line.

85

Clarinet1
TenorSax
Fr Horn
SynBass
Clarinet2

This musical system covers measures 85 and 86. It features five staves: Clarinet1 (treble clef), TenorSax (treble clef), Fr Horn (treble clef), SynBass (bass clef), and Clarinet2 (treble clef). Measure 85 shows Clarinet1 with a melodic line starting on a whole rest, followed by eighth and quarter notes. TenorSax and Fr Horn play a rhythmic eighth-note pattern. SynBass has a melodic line with eighth and quarter notes. Clarinet2 plays a rhythmic eighth-note pattern. Measure 86 continues these patterns, with Clarinet1 playing a more complex melodic line with slurs and ties.

87

Clarinet1
TenorSax
Fr Horn
SynBass
Clarinet2

This musical system covers measures 87, 88, and 89. It features five staves: Clarinet1 (treble clef), TenorSax (treble clef), Fr Horn (treble clef), SynBass (bass clef), and Clarinet2 (treble clef). Measure 87 shows Clarinet1 with a melodic line starting on a quarter rest, followed by eighth and quarter notes. TenorSax and Fr Horn play a rhythmic eighth-note pattern. SynBass has a melodic line with eighth and quarter notes. Clarinet2 plays a rhythmic eighth-note pattern. Measure 88 continues these patterns, with Clarinet1 playing a more complex melodic line with slurs and ties. Measure 89 shows Clarinet1 with a melodic line starting on a quarter rest, followed by eighth and quarter notes. TenorSax and Fr Horn play a rhythmic eighth-note pattern. SynBass has a melodic line with eighth and quarter notes. Clarinet2 plays a rhythmic eighth-note pattern.

Steve Miller Band - abracada

Clarinet1

♩ = 127,000252

4

8

12

16

20

24

28

32

36

40

V.S.

44



48



52



56



60



64



68



72



76



80



Clarinet 1

84



87



TenorSax

Steve Miller Band - abracada

♩ = 127,000252

4

7

10

13

16

19

22

25

28

V.S.

31



34



37



40



43



46



49



52



55



58



61




64



67



70



73



76



79



83



86



88



Fr Horn

Steve Miller Band - abracada

♩ = 127,000252

3

4

3

7

3

10

3

13

3

16

3

19

3

22

3

25

3

28

3

V.S.

61



64



67



70



73



76



79



82



86



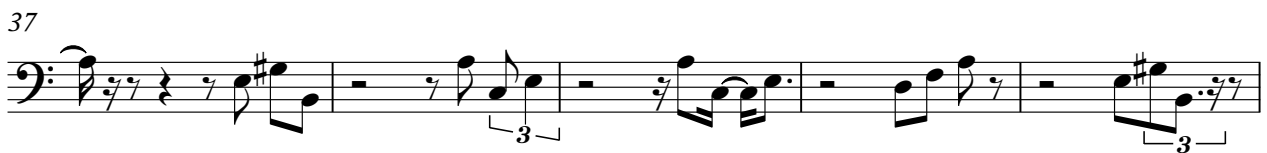
88



Steve Miller Band - abracada

SynBass

♩ = 127,000252



42



46



50



54



58



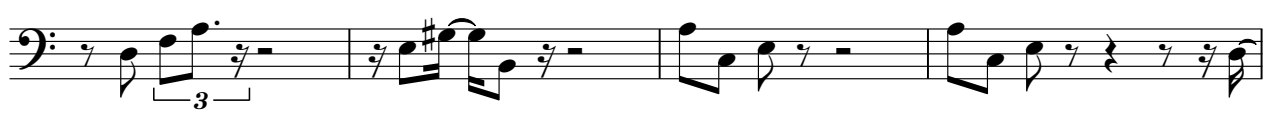
63



67



71



75



79



83



86





