

Super Metroid - Arrival on Zebes

♩ = 150,000000

Staff-2

Staff

Staff-3

9

Staff-2

Staff

Staff-3

17

Staff-2

Staff

Staff-3

Original Melody- "Crateria 1"
From Super Metroid

2

25

Staff-2

Staff

Staff-3

33

Staff-2

Staff

Staff-3

41

Staff-2

Staff

Staff-3

49

Staff-1

Staff-4

Staff-2

Staff-5

Staff

Staff-3

53

Staff-1

Staff-4

Staff-2

Staff

Staff-3

57

Staff-1

Staff-4

Staff-2

Staff

Staff-3

61

Staff-1

Staff-4

Staff-2

Staff

Staff-3

65

Staff-1: Guitar tablature with 'x' marks for muted notes and a single note in the final measure.

Staff-4: Bass line with eighth and quarter notes.

Staff-2: Treble clef with a whole note chord marked with a flat (b) and a slur.

Staff: Treble clef with whole rests.

Staff-3: Treble clef with guitar chords and a slur.

69

Staff-1: Guitar tablature with 'x' marks and a single note in the final measure.

Staff-4: Bass line with eighth and quarter notes.

Staff-2: Treble clef with a whole note chord marked with a sharp (#) and a slur.

Staff: Treble clef with whole rests.

Staff-3: Treble clef with guitar chords and a slur.

73

Staff-1: Guitar tablature with 'x' marks for fretted notes.

Staff-4: Bass line with eighth and quarter notes.

Staff-2: Treble clef with a whole note chord marked with a sharp sign.

Staff: Treble clef with a whole rest.

Staff-3: Treble clef with guitar tablature and a whole note chord.

77

Staff-1: Guitar tablature with 'x' marks for fretted notes.

Staff-4: Bass line with eighth and quarter notes.

Staff-2: Treble clef with a whole note chord marked with a sharp sign.

Staff: Treble clef with a whole rest.

Staff-3: Treble clef with guitar tablature and a whole note chord.

81

Staff-1: Percussion notation with 'x' marks on a treble clef staff.

Staff-4: Bass clef staff with a melodic line of eighth and quarter notes.

Staff-2: Treble clef staff with a single note on the first line, tied across four measures.

Staff: Treble clef staff with a whole rest in the first measure and a half rest in the second measure.

Staff-3: Treble clef staff with guitar tablature. It shows a sequence of notes on the first string (F#4, G4, A4, B4) and a long sustain mark.

85

Staff-1: Percussion notation with 'x' marks and diamond symbols on a treble clef staff.

Staff-4: Bass clef staff with a melodic line of eighth and quarter notes.

Staff-2: Treble clef staff with a single note on the first line, tied across four measures.

Staff: Treble clef staff with a whole rest in the first measure and a half rest in the second measure.

Staff-3: Treble clef staff with guitar tablature. It shows a sequence of notes on the first string (F#4, G4, A4, B4) and a long sustain mark.

89

Staff-1

Staff-4

Staff-2

Staff

Staff-3

Chord diagram for measure 92: $\sharp\sharp\phi\phi$

93

Staff-1

Staff-4

Staff-2

Staff

Staff-3

Chord diagram for measure 94: $\sharp\sharp\phi\phi$

Chord diagram for measure 96: $\sharp\sharp\phi\phi$

97

Staff-1

Staff-4

Staff-2

Staff

Staff-3

101

Staff-1

Staff-4

Staff-2

Staff

Staff-3

105

Staff-1: Guitar tablature with fret numbers and asterisks. Staff-4: Bass line with eighth and quarter notes. Staff-2: Treble clef with a whole note chord. Staff: Treble clef with a whole rest. Staff-3: Treble clef with guitar tablature and a whole note chord.

109

Staff-1: Guitar tablature with fret numbers and asterisks. Staff-4: Bass line with eighth and quarter notes. Staff-2: Treble clef with a whole note chord. Staff: Treble clef with a whole rest. Staff-3: Treble clef with guitar tablature and a whole note chord.

113

Staff-1: Treble clef, guitar notation with diamond-shaped flags on notes. Asterisks are placed above the notes in measures 115 and 116.

Staff-4: Treble clef, guitar notation with diamond-shaped flags on notes.

Staff-2: Treble clef, melodic line with a slur over measures 113-115 and a sharp sign above the note in measure 116.

Staff: Treble clef, guitar notation with diamond-shaped flags on notes.

Staff-3: Treble clef, guitar notation with diamond-shaped flags on notes. Includes a large oval slur under the notes in measures 114 and 115.

117

Staff-1: Treble clef, guitar notation with diamond-shaped flags on notes. Asterisks are placed above the notes in measures 118 and 119.

Staff-4: Treble clef, guitar notation with diamond-shaped flags on notes.

Staff-2: Treble clef, melodic line with a slur over measures 117-118 and a sharp sign above the note in measure 119.

Staff: Treble clef, guitar notation with diamond-shaped flags on notes.

Staff-3: Treble clef, guitar notation with diamond-shaped flags on notes. Includes a large oval slur under the notes in measures 118 and 119.

121

Staff-1: Treble clef, guitar notation with diamond and asterisk symbols above notes.

Staff-4: Treble clef, guitar notation with diamond and asterisk symbols above notes.

Staff-2: Treble clef, melodic line with slurs.

Staff: Treble clef, empty staff with a bar line.

Staff-3: Treble clef, guitar notation with diamond and asterisk symbols below notes.

125

Staff-1: Treble clef, guitar notation with diamond and asterisk symbols above notes.

Staff-4: Treble clef, guitar notation with diamond and asterisk symbols above notes.

Staff-2: Treble clef, melodic line with slurs.

Staff: Treble clef, empty staff with a bar line.

Staff-3: Treble clef, guitar notation with diamond and asterisk symbols below notes.

129

Staff-1

Staff-4

Staff-2

Staff

Staff-3

132

Staff-1

Staff-4

Staff-2

Staff

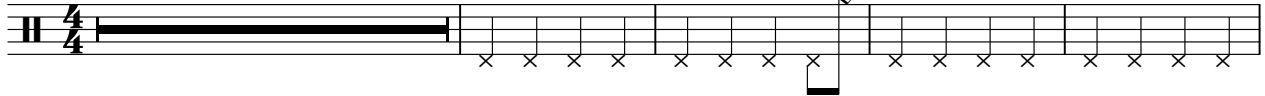
Staff-3

Super Metroid - Arrival on Zebes

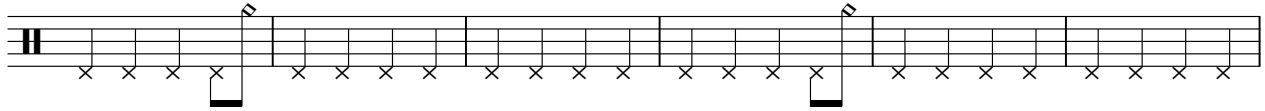
Staff-1

♩ = 150,000000

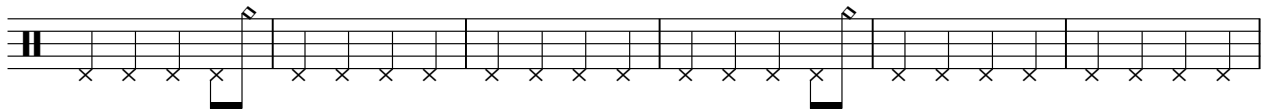
49



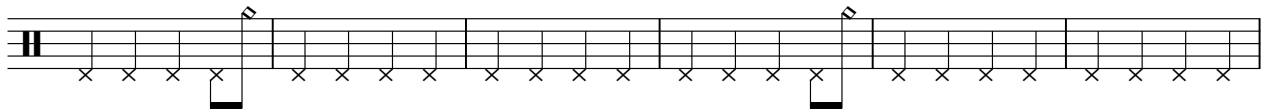
54



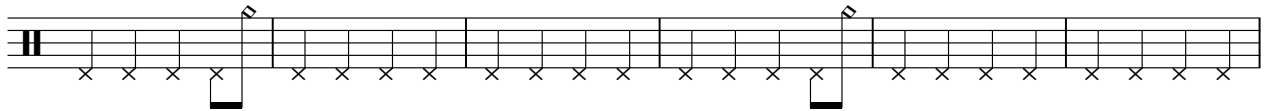
60



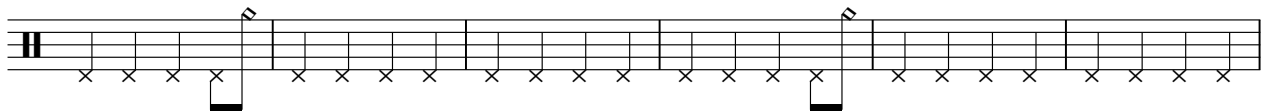
66



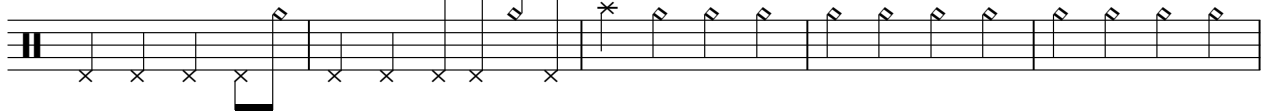
72



78



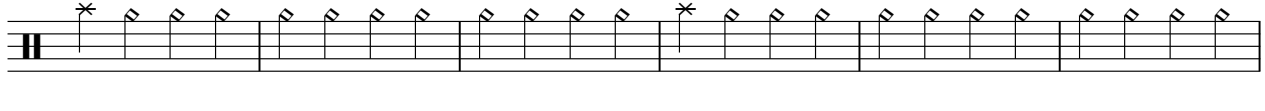
84



89



95



101



Original Melody- "Crateria 1"
From Super Metroid

V.S.

2

Staff-1

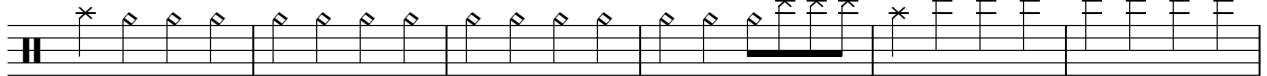
107



113



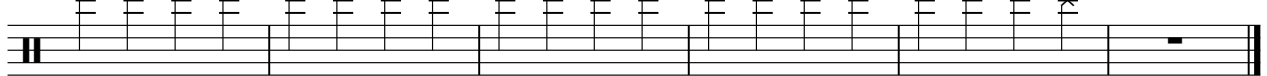
119



125



130



Super Metroid - Arrival on Zebes

Staff-4

♩ = 150,000000

49



53



58



63



68



73



78



83



88



93



Original Melody- "Crateria 1"
From Super Metroid

V.S.

Super Metroid - Arrival on Zebes

Staff-2

♩ = 150,000000

5

13

22

31

40

49

58

67

76

85

Original Melody- "Crateria 1"
From Super Metroid

V.S.

Staff-5

Super Metroid - Arrival on Zebes

♩ = 150,000000

48 86

Original Melody- "Crateria 1"
From Super Metroid

Super Metroid - Arrival on Zebes

Staff

♩ = 150,000000

The image displays a musical score for the "Arrival on Zebes" theme from Super Metroid. The score is written on a single staff in 4/4 time, with a tempo of 150,000,000. The key signature is one sharp (F#). The score is divided into measures, with measure numbers 10, 22, 34, 46, 59, 71, 83, 96, and 106 indicated. The notation includes various rhythmic patterns, such as eighth and sixteenth notes, and rests. Some measures contain a large number (2, 3, or 4) above the staff, likely indicating a specific rhythmic or melodic pattern. The score is presented in a simplified, graphical style, with notes represented by vertical lines and stems, and rests represented by horizontal bars. The overall layout is clean and organized, with a clear progression of measures and a consistent tempo.

Original Melody- "Crateria"
From Super Metroid

2

Staff

117

3

125

3 4

Super Metroid - Arrival on Zebes

Staff-3

♩ = 150,000000

15 3

24 3 3

36 3 3

48 4 3

60 3 3

72 3 3

84 4 3

97 3 3

109 3

117 3 3

Original Melody "Crateria 1"
From Super Metroid

