

Super Metroid - Dark Depths of Brinstar V1 1

♩ = 160,000000

Staff-6

Staff

Staff-2

Staff-3

Staff-5

Staff-1

♩ = 160,000000



5

Staff-6

Staff

Staff-4

Staff-2

Staff-3

Staff-1

Original Melody- Brinstar 2, from Super Metroid

10

Staff-6

Staff

Staff-4

Staff-2

Staff-3

Staff-1



14

Staff-6

Staff

Staff-4

Staff-2

Staff-3

Staff-7

Staff-5

Staff-1

18

Staff-6

Staff

Staff-4

Staff-2

Staff-3

Staff-7

Staff-5

Staff-1

Detailed description: This system of music covers measures 18 through 21. It consists of seven staves. Staff 6 (bass clef) has a whole rest in measure 18, followed by quarter notes in measures 19-21. Staff 7 (treble clef) has whole rests in measures 18 and 20, and chords in measures 19 and 21. Staff 5 (treble clef) has a half note in measure 18, followed by quarter notes and a half note in measures 19-21. Staff 3 (treble clef) has a melodic line with eighth and quarter notes, including slurs and ties. Staff 4 (treble clef) has a rhythmic pattern of quarter notes and eighth notes. Staff 2 (treble clef) has a simple melodic line of quarter notes. Staff 1 (bass clef) has a bass line with chords and a melodic line.



22

Staff-6

Staff

Staff-4

Staff-2

Staff-3

Staff-7

Staff-5

Staff-1

Detailed description: This system of music covers measures 22 through 25. It consists of seven staves. Staff 6 (bass clef) has a whole rest in measure 22, followed by quarter notes in measures 23-25. Staff 7 (treble clef) has whole rests in measures 22 and 24, and chords in measures 23 and 25. Staff 5 (treble clef) has a half note in measure 22, followed by quarter notes and a half note in measures 23-25. Staff 3 (treble clef) has a melodic line with eighth and quarter notes, including slurs and ties. Staff 4 (treble clef) has a rhythmic pattern of quarter notes and eighth notes. Staff 2 (treble clef) has a simple melodic line of quarter notes. Staff 1 (bass clef) has a bass line with chords and a melodic line.

26

Staff-6

Staff

Staff-4

Staff-2

Staff-3

Staff-7

Staff-5

Staff-1



30

Staff-6

Staff

Staff-4

Staff-2

Staff-3

Staff-7

Staff-5

Staff-1

34

Staff-6

Staff

Staff-4

Staff-2

Staff-3

Staff-7

Staff-5

Staff-1



38

Staff-6

Staff

Staff-4

Staff-2

Staff-3

Staff-7

Staff-5

Staff-1

42

Staff-6

Staff

Staff-4

Staff-2

Staff-3

Staff-7

Staff-1



46

Staff-6

Staff

Staff-4

Staff-2

Staff-3

Staff-7

Staff-1

Staff-8

Staff-9

50

Staff-6

Staff-7

Staff-1

Staff-8

Staff-9



55

Staff-6

Staff-7

Staff-1

Staff-8

Staff-9



59

Staff-6

Staff-7

Staff-1

Staff-8

Staff-9

71

Staff-6

Staff

Staff-4

Staff-2

Staff-3

Staff-7

Staff-5

Staff-1

Detailed description: This system of music contains measures 71 through 74. It features seven staves. Staff-6 (bass clef) has a whole rest in measure 71, followed by quarter notes in measures 72-74. Staff-7 (treble clef) has whole rests in measures 71 and 73, and chords in measures 72 and 74. Staff-5 (treble clef) has a whole rest in measure 71, a half note in measure 72, and a half note with a slur in measure 73. Staff-3 (treble clef) has a melodic line with slurs and ties. Staff-4 (soprano clef) has a rhythmic pattern of quarter notes. Staff-2 (treble clef) has a melodic line with slurs. Staff-1 (bass clef) has a bass line with chords and slurs.



75

Staff-6

Staff

Staff-4

Staff-2

Staff-3

Staff-7

Staff-5

Staff-1

Detailed description: This system of music contains measures 75 through 78. It features seven staves. Staff-6 (bass clef) has a whole rest in measure 75, followed by quarter notes in measures 76-78. Staff-7 (treble clef) has whole rests in measures 75 and 77, and chords in measures 76 and 78. Staff-5 (treble clef) has a melodic line with slurs. Staff-3 (treble clef) has a melodic line with slurs and ties. Staff-4 (soprano clef) has a rhythmic pattern of quarter notes. Staff-2 (treble clef) has a melodic line with slurs. Staff-1 (bass clef) has a bass line with chords and slurs.

79

Staff-6

Staff

Staff-4

Staff-2

Staff-3

Staff-7

Staff-5

Staff-1

Detailed description: This system contains measures 79 through 82. Staff 6 (bass clef) has a whole rest in measure 79, followed by quarter notes in measures 80-82. Staff 7 (percussion clef) has a continuous pattern of eighth notes with 'x' marks above them. Staff 4 (soprano clef) has a rhythmic pattern of quarter and eighth notes. Staff 2 (treble clef) has a melodic line with quarter and eighth notes. Staff 3 (treble clef) has a melodic line with eighth notes and slurs. Staff 7 (treble clef) has a chordal accompaniment with quarter notes and rests. Staff 5 (treble clef) has a long note with a slur in measure 79, followed by a whole rest in measure 80. Staff 1 (bass clef) has a bass line with chords and eighth notes.



83

Staff-6

Staff

Staff-4

Staff-2

Staff-3

Staff-7

Staff-5

Staff-1

Detailed description: This system contains measures 83 through 86. Staff 6 (bass clef) has a whole rest in measure 83, followed by quarter notes in measures 84-86. Staff 7 (percussion clef) has a continuous pattern of eighth notes with 'x' marks above them. Staff 4 (soprano clef) has a rhythmic pattern of quarter and eighth notes. Staff 2 (treble clef) has a melodic line with quarter and eighth notes. Staff 3 (treble clef) has a melodic line with eighth notes and slurs. Staff 7 (treble clef) has a chordal accompaniment with quarter notes and rests. Staff 5 (treble clef) has a long note with a slur in measure 83, followed by a whole rest in measure 84. Staff 1 (bass clef) has a bass line with chords and eighth notes.

87

Staff-6

Staff

Staff-4

Staff-2

Staff-3

Staff-7

Staff-5

Staff-1

Detailed description: This system of music contains measures 87 through 90. It features seven staves. Staff 6 (bass clef) has a simple bass line with quarter notes. Staff 7 (treble clef) plays a rhythmic accompaniment of chords with quarter notes. Staff 5 (treble clef) has a melodic line with a long slur over the first two measures. Staff 3 (treble clef) has a complex melodic line with slurs and ties. Staff 2 (treble clef) has a simple melodic line. Staff 4 (soprano clef) has a rhythmic accompaniment of eighth notes. Staff 1 (bass clef) has a bass line with chords and a long slur over the first two measures.



91

Staff-6

Staff

Staff-4

Staff-2

Staff-3

Staff-7

Staff-5

Staff-1

Detailed description: This system of music contains measures 91 through 94. It features seven staves. Staff 6 (bass clef) has a simple bass line with quarter notes. Staff 7 (treble clef) plays a rhythmic accompaniment of chords with quarter notes. Staff 5 (treble clef) has a melodic line with a long slur over the first two measures. Staff 3 (treble clef) has a complex melodic line with slurs and ties. Staff 2 (treble clef) has a simple melodic line. Staff 4 (soprano clef) has a rhythmic accompaniment of eighth notes. Staff 1 (bass clef) has a bass line with chords and a long slur over the first two measures.

95

Staff-6

Staff

Staff-4

Staff-2

Staff-3

Staff-7

Staff-5

Staff-1

Detailed description: This musical score block covers measures 95 through 98. It consists of eight staves. Staff-6 (bass clef) has a whole rest in measure 95, followed by quarter notes G2, F2, G2, and F2 in measures 96-98. Staff (percussion) has a continuous pattern of eighth notes marked with 'x'. Staff-4 (bass clef) has quarter notes G2, F2, G2, and F2 in measures 95-98. Staff-2 (treble clef) has quarter notes G4, A4, B4, and A4 in measures 95-98. Staff-3 (treble clef) has a melodic line with eighth and quarter notes, including slurs and ties. Staff-7 (treble clef) has whole rests in measures 95 and 97, and chords G4 and F4 in measures 96 and 98. Staff-5 (treble clef) has whole rests in all measures. Staff-1 (bass clef) has chords G2, F2, G2, and F2 in measures 95-98.



99

Staff-6

Staff

Staff-4

Staff-2

Staff-3

Staff-7

Staff-1

Detailed description: This musical score block covers measures 99 through 102. It consists of eight staves. Staff-6 (bass clef) has a whole rest in measure 99, followed by quarter notes G2, F2, G2, and F2 in measures 100-102. Staff (percussion) has a continuous pattern of eighth notes marked with 'x'. Staff-4 (bass clef) has quarter notes G2, F2, G2, and F2 in measures 99-102. Staff-2 (treble clef) has quarter notes G4, A4, B4, and A4 in measures 99-102. Staff-3 (treble clef) has a melodic line with eighth and quarter notes, including slurs and ties. Staff-7 (treble clef) has whole rests in measures 99 and 101, and chords G4 and F4 in measures 100 and 102. Staff-1 (bass clef) has chords G2, F2, G2, and F2 in measures 99-102.

103

Staff-6: Bass clef, notes on the 2nd and 4th lines.

Staff: Percussion, rhythmic pattern of eighth notes with 'x' marks.

Staff-4: Treble clef, eighth-note melody.

Staff-2: Treble clef, notes on the 2nd and 4th lines.

Staff-3: Treble clef, eighth-note melody with a slur.

Staff-7: Treble clef, chords on the 2nd and 4th lines.

Staff-1: Bass clef, chords on the 2nd and 4th lines.

Staff-8: Treble clef, eighth-note melody.

Staff-9: Treble clef, eighth-note melody with a triplet of eighth notes.



106

Staff-6: Bass clef, notes on the 2nd and 4th lines.

Staff: Percussion, rhythmic pattern of eighth notes with 'x' marks.

Staff-4: Treble clef, eighth-note melody.

Staff-7: Treble clef, chords on the 2nd and 4th lines.

Staff-1: Bass clef, chords on the 2nd and 4th lines.

Staff-8: Treble clef, eighth-note melody.

Staff-9: Treble clef, eighth-note melody with a triplet of eighth notes.

110

Staff-6: Bass clef, notes on the 2nd, 4th, 5th, and 7th lines.

Staff: Percussion, marked with 'x' symbols.

Staff-4: Bass clef, notes on the 2nd, 4th, and 5th lines.

Staff-7: Treble clef, chords on the 2nd, 4th, and 5th lines.

Staff-1: Bass clef, chords on the 2nd, 4th, and 5th lines.

Staff-8: Treble clef, notes on the 2nd, 4th, and 5th lines.

Staff-9: Treble clef, notes on the 2nd, 4th, and 5th lines, including a triplet of eighth notes.



114

Staff-6: Bass clef, notes on the 2nd, 4th, 5th, and 7th lines.

Staff: Percussion, marked with 'x' symbols.

Staff-4: Bass clef, notes on the 2nd, 4th, and 5th lines.

Staff-7: Treble clef, chords on the 2nd, 4th, and 5th lines.

Staff-1: Bass clef, chords on the 2nd, 4th, and 5th lines.

Staff-8: Treble clef, notes on the 2nd, 4th, and 5th lines.

Staff-9: Treble clef, notes on the 2nd, 4th, and 5th lines, including a triplet of eighth notes.

Super Metroid - Dark Depths of Brinstar V1 1

Staff-6

♩ = 160,000000



9



17



25



33



41



49



57



65



73



Original Melody- Brinstar 2, from Super Metroid

2

Staff-6

80



88



96



104



112



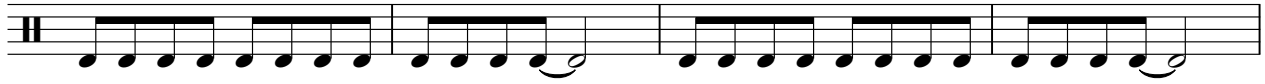
Super Metroid - Dark Depths of Brinstar V1 1

Staff

♩ = 160,000000



5



9



13



17



21



25



29



33



37



Original Melody- Brinstar 2, from Super Metroid

V.S.

2

Staff

41



45



49



66



70



74



78



82



86



90



94



98



102



106



110



114



♩ = 160,000000
8



13



18



23



28



33



38



43



47



Original Melody- Brinstar 2, from Super Metroid

113

A musical staff with a treble clef and a key signature of one flat. The staff contains four measures of music. The first measure has a dotted quarter note on G4, an eighth note on A4, and an eighth note on Bb4. The second measure has a dotted quarter note on G4, an eighth note on A4, and an eighth note on Bb4. The third measure has a dotted quarter note on G4, an eighth note on A4, and an eighth note on Bb4. The fourth measure is a whole measure rest, indicated by a thick horizontal bar across the staff. A large number '4' is positioned above the rest.

Super Metroid - Dark Depths of Brinstar V1 1

Staff-2

♩ = 160,000000

7

13

19

25

31

37

43

47

15

Original Melody- Brinstar 2, from Super Metroid

64



70



76



82



88



94

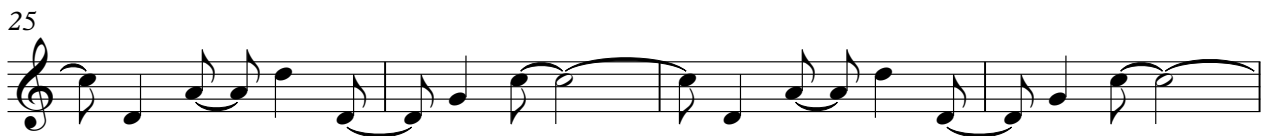
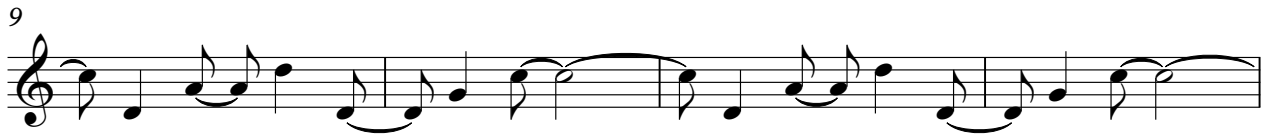
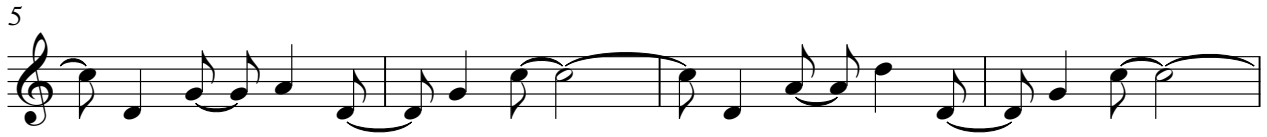


100



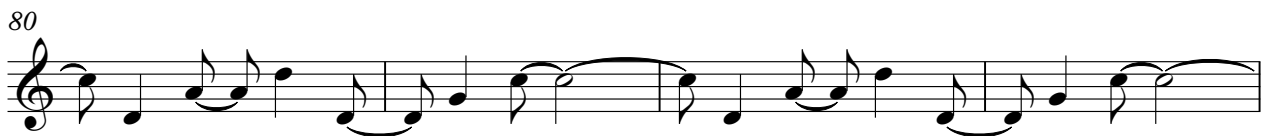
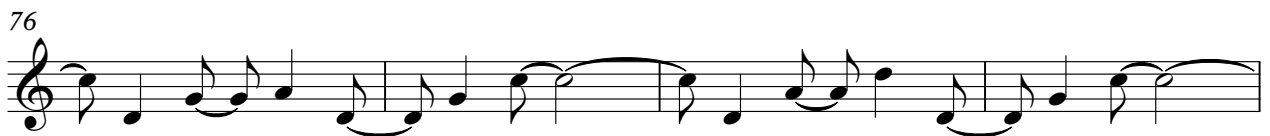
16

♩ = 160,000000



Original Melody- Brinstar 2, from Super Metroid

V.S.



Super Metroid - Dark Depths of Brinstar V1 1

Staff-7

♩ = 160,000000

16

22

29

36

43

50

57

63

9

77

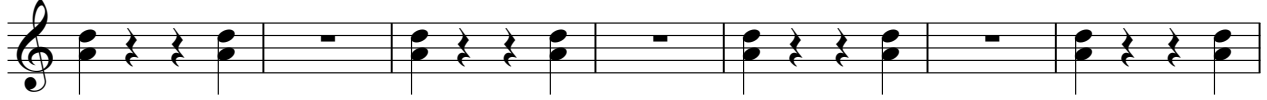
84

Original Melody- Brinstar 2, from Super Metroid

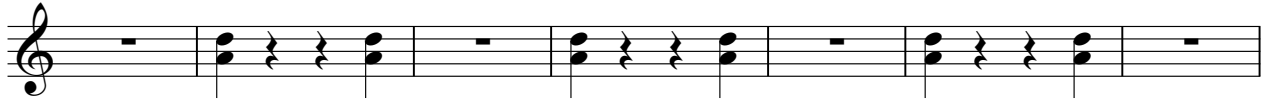
2

Staff-7

90



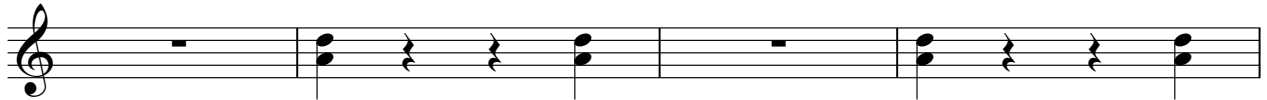
97



104



111



115



Staff-5

Super Metroid - Dark Depths of Brinstar V1 1

♩ = 160,000000

16

23

32

41

31

78

87

93

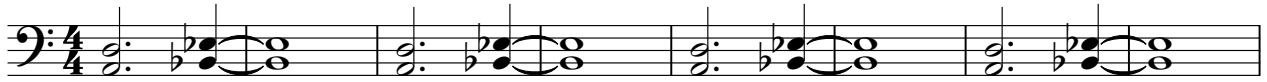
24

Original Melody- Brinstar 2, from Super Metroid

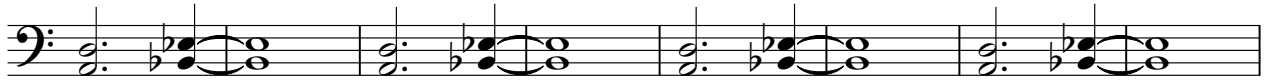
Super Metroid - Dark Depths of Brinstar V1 1

Staff-1

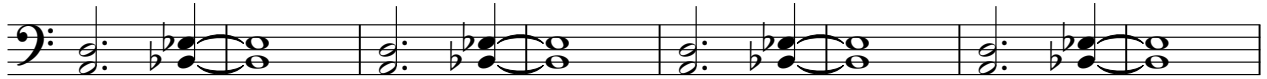
♩ = 160,000000



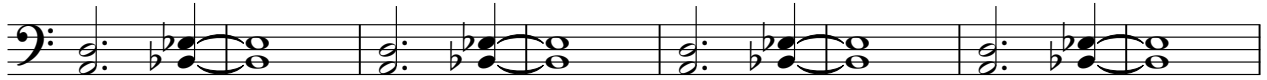
9



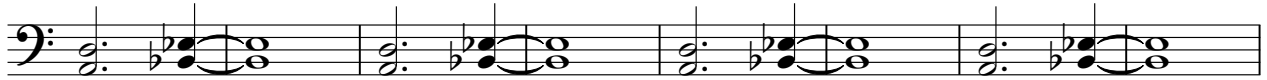
17



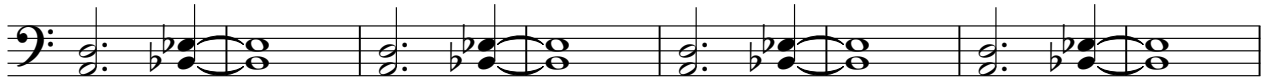
25



33



41



49



57



65



73



Original Melody- Brinstar 2, from Super Metroid

V.S.

2

Staff-1

81



89



97



105



113



Staff-8

Super Metroid - Dark Depths of Brinstar V1 1

$\text{♩} = 160,000,000$
48

53

59

63
41

108

114
2

Original Melody- Brinstar 2, from Super Metroid

♩ = 160,000000

48

51

55

59

62

40

104

108

112

116

Original Melody- Brinstar 2, from Super Metroid