

# Sylvia Millecam - BRAND

♩ = 119,000397

MELODY

DRUMS

CLEAN GTR

OVERDRIVE

FINGERDBAS

ORGAN 3

BRASS 1

A.PIANO 1



5

DRUMS

CLEAN GTR

OVERDRIVE

FINGERDBAS

8

DRUMS

CLEAN GTR

OVERDRIVE

FINGERDBAS

ORGAN 3



11

MELODY

DRUMS

OVERDRIVE

FINGERDBAS

ORGAN 3

14

MELODY

DRUMS

CLEAN GTR

OVERDRIVE

FINGERDBAS

ORGAN 3



17

MELODY

DRUMS

CLEAN GTR

OVERDRIVE

FINGERDBAS

ORGAN 3

20

MELODY

DRUMS

CLEAN GTR

OVERDRIVE

FINGERDBAS

ORGAN 3



22

MELODY

DRUMS

CLEAN GTR

OVERDRIVE

FINGERDBAS

ORGAN 3

25

MELODY

DRUMS

CLEAN GTR

OVERDRIVE

FINGERDBAS

ORGAN 3

BRASS 1



28

MELODY

DRUMS

CLEAN GTR

OVERDRIVE

FINGERDBAS

ORGAN 3

31

MELODY

DRUMS

CLEAN GTR

OVERDRIVE

FINGERDBAS

ORGAN 3



34

MELODY

DRUMS

CLEAN GTR

OVERDRIVE

FINGERDBAS

ORGAN 3

37

MELODY

DRUMS

CLEAN GTR

OVERDRIVE

FINGERDBAS

ORGAN 3



39

MELODY

DRUMS

CLEAN GTR

OVERDRIVE

FINGERDBAS

ORGAN 3

41

MELODY

DRUMS

OVERDRIVE

T																			
A																			
B	2	2	2 2	2	0	0	0	0	0	0	0	0	0	0	2	2	2	2	2
					3	3	3	3	3	3	3	3	3	3	0	0	0	0	0

FINGERDBAS

ORGAN 3



44

MELODY

DRUMS

CLEAN GTR

OVERDRIVE

T																			
A	0	0	2 2	0	0	0	2 2	0	0	0	2 2	0	0	0	2 2	0			
B																			

FINGERDBAS

ORGAN 3

BRASS 1

A.PIANO 1



47

MELODY

DRUMS

OVERDRIVE

T	2	2	2	2	2	2	2						
A	0	0	0	0	0	0	0	0	0	0	0	0	0
B								3	3	3	3	3	3

FINGERDBAS

ORGAN 3

A.PIANO 1



49

MELODY

DRUMS

OVERDRIVE

T													
A	4	0	0	0	0	0	0	0	0	0	2		
B	4	0	0	0	0	0	0	0	0	0	0		

FINGERDBAS

ORGAN 3

A.PIANO 1

50

MELODY

DRUMS

OVERDRIVE

FINGERDBAS

ORGAN 3

A.PIANO 1

T										2	2	2	2	2	2	2	2	2
A	2	2	2	2	2	2	2	2	2	2	2	2	2	2	2	2	2	2
B	0	0	3	4	0	3	2	0	0	0	0	0	0	0	0	0	0	0



52

MELODY

DRUMS

OVERDRIVE

FINGERDBAS

ORGAN 3

A.PIANO 1

T	0	0	0	0	0	0	0	0	0	2	2	2	2	2	2	2	2	2
A	0	0	0	0	0	0	0	0	0	2	2	4	5	4	2	2	2	2
B	3	3	3	3	3	3	3	3	2	0	0	0	0	0	0	0	0	4

54

MELODY

DRUMS

OVERDRIVE

FINGERDBAS

ORGAN 3

A.PIANO 1

Measure	T	A	B
54	4 0 4 4	0 1 2 2	0 0 2 2
55	4 4 4 4	2 2 2 2	0 0 0 0
56	2 2 2 2	2 2 2 2	0 0 0 0



57

MELODY

DRUMS

OVERDRIVE

FINGERDBAS

BRASS 1

A.PIANO 1

Measure	T	A	B
57	2 2 2 2	2 2 2 2	0 0 0 0
58	2 2 2 2	2 2 2 2	0 0 0 0
59	2 2 2 2	2 2 2 2	0 0 0 0

60

MELODY

DRUMS

OVERDRIVE

FINGERDBAS

ORGAN 3

BRASS 1



63

MELODY

DRUMS

CLEAN GTR

OVERDRIVE

FINGERDBAS

ORGAN 3

65

MELODY

DRUMS

CLEAN GTR

OVERDRIVE

FINGERDBAS

ORGAN 3



67

MELODY

DRUMS

CLEAN GTR

OVERDRIVE

FINGERDBAS

ORGAN 3

69

MELODY

DRUMS

CLEAN GTR

OVERDRIVE

FINGERDBAS

ORGAN 3



71

MELODY

DRUMS

OVERDRIVE

FINGERDBAS

ORGAN 3

74

MELODY

DRUMS

OVERDRIVE

FINGERDBAS

ORGAN 3

BRASS 1

A.PIANO 1



76

DRUMS

CLEAN GTR

OVERDRIVE

FINGERDBAS

ORGAN 3

A.PIANO 1

78

DRUMS

CLEAN GTR

OVERDRIVE

FINGERDBAS

ORGAN 3

A.PIANO 1



80

DRUMS

CLEAN GTR

OVERDRIVE

FINGERDBAS

ORGAN 3

A.PIANO 1



82

DRUMS

CLEAN GTR

OVERDRIVE

FINGERDBAS

ORGAN 3

A.PIANO 1



84

DRUMS

CLEAN GTR

OVERDRIVE

FINGERDBAS

ORGAN 3

A.PIANO 1

86

MELODY

DRUMS

CLEAN GTR

OVERDRIVE

FINGERDBAS

ORGAN 3

A.PIANO 1

89

MELODY

DRUMS

OVERDRIVE


FINGERDBAS

ORGAN 3

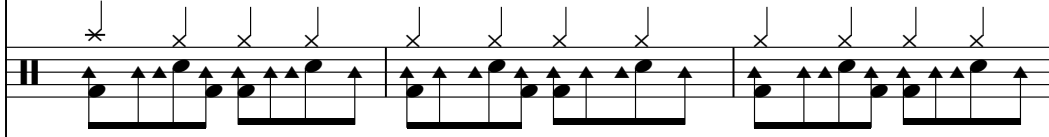
A.PIANO 1

90

MELODY



DRUMS



CLEAN GTR



OVERDRIVE

T	0	0	0	0	0	0	0	0
A								
B		2	2		2	2		2


FINGERDBAS



ORGAN 3



BRASS 1



93

MELODY

Musical staff for MELODY in treble clef. It contains three measures of music. The first measure has a quarter rest followed by eighth notes G4, A4, B4, and A4. The second measure has a half note G4. The third measure has an eighth note G4, followed by eighth notes A4, B4, and A4.

DRUMS

Musical staff for DRUMS in a drum set notation. It shows a consistent rhythmic pattern of eighth notes across three measures, with 'x' marks above the notes indicating cymbal hits.

CLEAN GTR

Musical staff for CLEAN GTR in treble clef. It contains three measures of music. The first measure has a quarter rest followed by a quarter note chord (F#4, A4). The second measure has a quarter note chord (F#4, A4). The third measure has a quarter rest followed by a quarter note chord (F#4, A4).

OVERDRIVE

Musical staff for OVERDRIVE in guitar tab notation. It shows fret numbers for strings T, A, and B across three measures. The fret numbers are 0, 0, 2, 2, 0 in each measure.

FINGERDBAS

Musical staff for FINGERDBAS in bass clef. It contains three measures of music. The first measure has eighth notes G2, A2, B2, and A2. The second measure has eighth notes G2, A2, B2, and A2. The third measure has eighth notes G2, A2, B2, and A2.

ORGAN 3

Musical staff for ORGAN 3 in treble clef. It contains three measures of music. The first measure has a quarter note chord (F#4, A4). The second measure has a quarter note chord (F#4, A4). The third measure has a quarter note chord (F#4, A4).

BRASS 1

Musical staff for BRASS 1 in treble clef. It contains three measures of music. The first measure has a quarter rest. The second measure has a quarter note chord (F#4, A4). The third measure has a quarter rest.

96

MELODY

DRUMS

CLEAN GTR

OVERDRIVE

FINGERDBAS

ORGAN 3

BRASS 1

99

MELODY

DRUMS

CLEAN GTR

OVERDRIVE

FINGERDBAS

ORGAN 3

BRASS 1

102

MELODY

Musical notation for the MELODY staff, measures 102-104. The key signature has one sharp (F#). The melody consists of quarter notes and eighth notes with rests, some beamed together.

DRUMS

Musical notation for the DRUMS staff, measures 102-104. It features a consistent rhythmic pattern of eighth notes with upward-pointing stems and 'x' marks above the notes, indicating a specific drum sound.

CLEAN GTR

Musical notation for the CLEAN GTR staff, measures 102-104. It shows chords with a sharp sign (#) and rests, indicating specific harmonic accompaniment.

OVERDRIVE

T											
A	0	0	2	2	0	0	0	2	2	0	0
B											

FINGERDBAS

Musical notation for the FINGERDBAS staff, measures 102-104. It features a rhythmic pattern of eighth notes with upward-pointing stems, typical of a fingered bass line.

ORGAN 3

Musical notation for the ORGAN 3 staff, measures 102-104. It shows chords with a sharp sign (#) and beamed eighth notes, indicating a specific organ accompaniment.

BRASS 1

Musical notation for the BRASS 1 staff, measures 102-104. It shows chords with a sharp sign (#) and rests, indicating a specific brass accompaniment.

105

MELODY

DRUMS

CLEAN GTR

OVERDRIVE

FINGERDBAS

ORGAN 3

BRASS 1



108

MELODY

DRUMS

CLEAN GTR

OVERDRIVE

T	0	0	2	2	0	0	0	2	2	0	0	0	2	2	0
A															
B															

FINGERDBAS

ORGAN 3

BRASS 1

111

MELODY

DRUMS

CLEAN GTR

OVERDRIVE

FINGERDBAS

ORGAN 3

BRASS 1



113

MELODY

DRUMS

CLEAN GTR

OVERDRIVE

FINGERDBAS

ORGAN 3

Sylvia Millecam - BRAND

MELODY

♩ = 119,000397

9

14

19

24

2

31

36

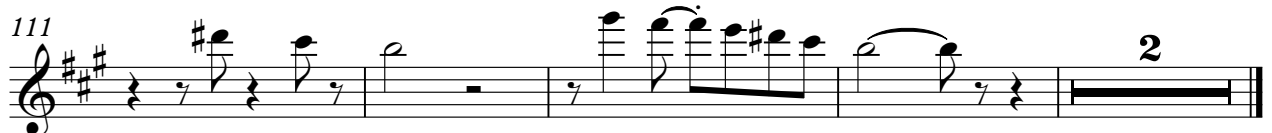
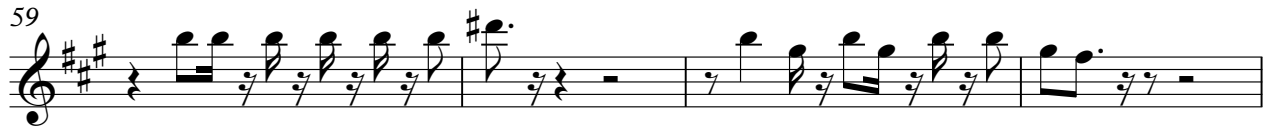
41

2

47

51

55



# Sylvia Millecam - BRAND

## DRUMS

♩ = 119,000397

2

4/4

8

8

13

13

17

17

21

21

25

25

29

29

33

33

37

37

41

41

V.S.

DRUMS

45

Musical notation for drum set at measure 45. The staff shows a sequence of eighth notes with 'x' marks above them, indicating cymbal hits. The notes are on a single line, likely representing the snare drum.

49

Musical notation for drum set at measure 49. Similar to measure 45, it shows eighth notes with 'x' marks above them.

53

Musical notation for drum set at measure 53. It includes a triplet of eighth notes marked with a '3' and a 'tr' symbol, followed by a rest.

60

Musical notation for drum set at measure 60. Shows eighth notes with 'x' marks above them.

64

Musical notation for drum set at measure 64. Shows eighth notes with 'x' marks above them.

68

Musical notation for drum set at measure 68. Shows eighth notes with 'x' marks above them.

72

Musical notation for drum set at measure 72. Shows eighth notes with 'x' marks above them.

76

Musical notation for drum set at measure 76. Shows eighth notes with 'x' marks above them.

79

Musical notation for drum set at measure 79. Shows eighth notes with 'x' marks above them.

82

Musical notation for drum set at measure 82. Shows eighth notes with 'x' marks above them.

DRUMS

86

Drum notation for measures 86-89. Each measure contains a sequence of notes with stems pointing up, and a corresponding 'x' symbol above the staff. Measure 87 has an asterisk above the first 'x'.

90

Drum notation for measures 90-93. Each measure contains a sequence of notes with stems pointing up, and a corresponding 'x' symbol above the staff. Measure 90 has an asterisk above the first 'x'.

94

Drum notation for measures 94-97. Each measure contains a sequence of notes with stems pointing up, and a corresponding 'x' symbol above the staff.

98

Drum notation for measures 98-101. Each measure contains a sequence of notes with stems pointing up, and a corresponding 'x' symbol above the staff.

102

Drum notation for measures 102-105. Each measure contains a sequence of notes with stems pointing up, and a corresponding 'x' symbol above the staff.

106

Drum notation for measures 106-109. Each measure contains a sequence of notes with stems pointing up, and a corresponding 'x' symbol above the staff.

110

Drum notation for measures 110-112. Each measure contains a sequence of notes with stems pointing up, and a corresponding 'x' symbol above the staff.

113

Drum notation for measure 113. The first part shows notes with stems pointing up and 'x' symbols above. The second part shows a double bar line, a circled 'x' symbol, and a large number '2' above the staff, indicating a double bar line.

♩ = 119,000397

5

10 4 2

20 4

29

35 3

41 4 16

64

69 5

78

83 3



90



96



102



108



112



# Sylvia Millecam - BRAND

## OVERDRIVE

♩ = 119,000397

**2**

E				
T				
B				
A				
D				
B				
E				
A				

0 0 2 2 0    0 0 2 2 0    0 0 2 2 0

7

T				
A	0	0	2	2
B	0	0	2	2

0    0    2 2    0    0    0    2 2    0    0    0    2 2    0    0    0    2 2    0

11

T				
A	0	0	2	2
B	0	0	2	2

0    0    2 2    0    0    0    2 2    0    0    0    2 2    0

15

T				
A	0	0	2	2
B	0	0	2	2

0    0    2 2    0    2    2    2 2    2    2    2    2 2    2    0    0    2 2    0

19

T				
A	0	0	2	2
B	0	0	2	2

0    0    2 2    0    2    2    2 2    2    2    2    2 2    2    2    2    2 2    2

23

T																			
A	2	2	2	2	2	2	2	2	2	2	2	2	2	2	2	2	2	2	2
B	2	2	2	2	2	2	2	2	2	2	2	2	2	2	2	2	2	2	2

0 0 0 0 0 0 0 0    2 2 2 2 2 2 2 2

3 3 3 3 3 3 3 3    0 0 0 0 0 0 0 0

26

T				
A	0	0	2	2
B	0	0	2	2

0    0    2 2    0    0    0    2 2    0    0    0    2 2    0

OVERDRIVE

T				
A	0	0	2 2	0
B				

34

T				
A	2	2	2 2	2
B				

38

T				
A	2	2	2 2	2
B				

42

T				
A	0 0 0 0 0 0 0 0	2 2 2 2 2 2 2 2	0	0
B	3 3 3 3 3 3 3 3	0 0 0 0 0 0 0 0	2 2	0

46

T				
A	0	0	2 2	0
B				

50

T				
A	2 2 2 2 2 2 2 2	2 2 2 2 2 2 2 2	0 0 0 0 0 0 0 0	0 0 0 0 0 0 0 0
B	0 0 3 4 0 3 2	0 0 0 0	3 3 3 3 3 3 3 3	4 0 0 0 0 0 0 0

53

T							
A	2 2 2 2 2 2 2 2	4 4 0 4 4 4 4 4	2	2	2	2	2
B	0 0 0 0 0 0 0 0	0 0 0 5 0 0 0 0	0	0	0	0	0

60

T				
A	0	0	2 2	0
B				

64

T				
A	2	2	2 2	2
B				

68

T				
A	2	2	2 2	2
B				

T				
A	0 0 0 0 0 0 0 0	2 2 2 2 2 2 2	0 0 2 2 0	0 0 2 2 0
B	3 3 3 3 3 3 3 3	0 0 0 0 0 0 0 0		

76

T				
A	0 0 2 2 0	0 0 2 2 0	0 0 2 2 0	0 0 2 2 0
B				

80

T				
A	2 2 2 2	2 2 2 2	0 0 2 2 0	0 0 2 2 0
B				

84

T				
A	2 2 2 2	2 2 2 2	2 2 2 2	2 2 2 2
B				

88

T				
A	0 0 0 0 0 0 0 0	2 2 2 2 2 2 2	0 0 2 2 0	0 0 2 2 0
B	3 3 3 3 3 3 3 3	0 0 0 0 0 0 0 0		

92

T				
A	0 0 2 2 0	0 0 2 2 0	0 0 2 2 0	0 0 2 2 0
B				

96

T				
A	0 0 2 2 0	0 0 2 2 0	0 0 2 2 0	0 0 2 2 0
B				

100

T				
A	0 0 2 2 0	0 0 2 2 0	0 0 2 2 0	0 0 2 2 0
B				

104

T				
A	0 0 2 2 0	0 0 2 2 0	0 0 2 2 0	0 0 2 2 0
B				

108

T				
A	0 0 2 2 0	0 0 2 2 0	0 0 2 2 0	
B				

V.S.

4 111

# OVERDRIVE

**3**

A guitar tab for a 4-measure phrase. The strings are labeled T, A, and B. The first three measures each contain the notes 0, 0, 2, 2, 0. The fourth measure contains a thick horizontal bar spanning the width of the strings, indicating a sustained or overdriven sound.

♩ = 119,000397

2



6



9



13



16



19



22



25



27



30



33



36



39



42



46



49



51



53



58



2





95



98



101



104



107



110



112



ORGAN 3

Sylvia Millecam - BRAND

♩ = 119,000397

6

2

14

20

26

32

38

44

50

5

5



ORGAN 3

104



110





A.PIANO 1

Sylvia Millecam - BRAND

♩ = 119,000397

42

47

50

53

58

16

78

84

88

27