

Travis - Driftwood

♩ = 80,000000

Track 5: Treble clef, eighth-note melody with a triplet in the second measure.

Track 4: Bass clef, eighth-note accompaniment with a triplet in the second measure.

Track 2: Bass clef, chordal accompaniment with a tempo marking of ♩ = 80,000000.

Track 3: Bass clef, eighth-note accompaniment.



3

Track 5: Treble clef, eighth-note melody with a triplet in the first measure.

Track 4: Bass clef, eighth-note accompaniment with a triplet in the first measure.

Track 2: Bass clef, chordal accompaniment.

Track 6: Bass clef, eighth-note accompaniment.

Track 3: Bass clef, eighth-note accompaniment.

5

Track 5

Track 2

Verse



7

Track 5

Track 2

Verse



9

Track 5

Track 2

Verse



11

Track 5

Track 2

Verse

13

Track 5

Track 4

Track 2

Track 6

Chorus

Detailed description: This musical score block covers measures 13 to 14. It features five tracks: Track 5 (treble clef), Track 4 (bass clef), Track 2 (bass clef), Track 6 (bass clef), and Chorus (treble clef). Track 5 and Track 4 play a rhythmic pattern of eighth notes with slurs. Track 2 contains a complex guitar-like accompaniment with many beamed notes. Track 6 is mostly empty. The Chorus track shows a melodic line with a key signature of one sharp (F#).



15

Track 5

Track 4

Track 2

Track 6

Chorus

Detailed description: This musical score block covers measures 15 to 16. It features five tracks: Track 5 (treble clef), Track 4 (bass clef), Track 2 (bass clef), Track 6 (bass clef), and Chorus (treble clef). Track 5 and Track 4 continue the rhythmic pattern from the previous block. Track 2 continues with its complex accompaniment. Track 6 remains empty. The Chorus track continues the melodic line with a key signature of one sharp (F#).

17

Track 5

Track 4

Track 2

Track 6

Chorus

Detailed description: This block contains a musical score for five tracks and a chorus section, starting at measure 17. Track 5 is in treble clef and features a rhythmic pattern of eighth notes with accents. Track 4 is in bass clef and mirrors the rhythmic pattern of Track 5. Track 2 is in bass clef and shows a sequence of chords with sharp signs. Track 6 is in bass clef and is mostly empty. The Chorus is in treble clef and contains a few notes with sharp signs.



19

Track 5

Track 4

Track 2

Track 6

Chorus

Detailed description: This block contains a musical score for five tracks and a chorus section, starting at measure 19. Track 5 is in treble clef and features a rhythmic pattern of eighth notes with accents. Track 4 is in bass clef and mirrors the rhythmic pattern of Track 5. Track 2 is in bass clef and shows a sequence of chords with sharp signs. Track 6 is in bass clef and is mostly empty. The Chorus is in treble clef and contains a few notes with sharp signs.

21

Track 5

Track 4

Track 2

Track 6

Verse

Chorus



23

Track 5

Track 2

Verse



25

Track 5

Track 2

Verse

27

Track 5

Track 2

Verse



29

Track 5

Track 4

Track 2

Track 6

Track 3

Verse

Other Bit

31

Track 5

Track 4

Track 6

Track 3

Other Bit

This musical score block covers measures 31 and 32. It features five staves: Track 5 (treble clef), Track 4 (bass clef), Track 6 (bass clef), Track 3 (bass clef), and Other Bit (treble clef). Track 5 and Track 4 contain complex rhythmic patterns with many beamed notes and slurs. Track 6 and Track 3 show vertical stems, likely representing guitar fretting. The Other Bit staff has a few notes, including a sharp sign, in the second measure.



33

Track 5

Track 4

Track 6

Track 3

Other Bit

This musical score block covers measures 33 and 34. It features five staves: Track 5 (treble clef), Track 4 (bass clef), Track 6 (bass clef), Track 3 (bass clef), and Other Bit (treble clef). Track 5 and Track 4 continue with complex rhythmic patterns. Track 6 and Track 3 show vertical stems. The Other Bit staff has a few notes, including a sharp sign, in the second measure.

35

Track 5

Track 4

Track 6

Track 3

Other Bit

Detailed description: This block contains a musical score for five tracks. Track 5 (treble clef) and Track 4 (bass clef) feature a melodic line with a slur over a series of eighth notes. Track 6 (bass clef) and Track 3 (bass clef) contain vertical tick marks on a staff, likely representing a guitar fretboard. The 'Other Bit' track (treble clef) has a simple melodic line with a few notes and rests.



37

Track 5

Track 4

Track 6

Track 3

Other Bit

Detailed description: This block contains a musical score for five tracks. Track 5 (treble clef) and Track 4 (bass clef) feature a melodic line with a slur over a series of eighth notes. Track 6 (bass clef) and Track 3 (bass clef) contain vertical tick marks on a staff. The 'Other Bit' track (treble clef) has a simple melodic line with a few notes and rests.

39

Track 5

Track 4

Track 3

Other Bit



41

Track 5

Track 4

Track 2

Track 3

Verse

Other Bit

43

Track 5

Track 2

Verse



45

Track 5

Track 2

Verse



47

Track 5

Track 2

Verse

49

Track 5

Track 4

Track 2

Track 6

Verse

Chorus



51

Track 5

Track 4

Track 2

Track 6

Chorus

52

Track 5

Track 4

Track 2

Track 6

Chorus



53

Track 5

Track 4

Track 2

Track 6

Chorus

54

Track 5

Track 4

Track 2

Track 6

Chorus



55

Track 5

Track 4

Track 2

Track 6

Chorus

56

Track 5

Track 4

Track 2

Track 6

Chorus



57

Track 5

Track 4

Track 2

Track 6

Chorus

59

Track 5

Track 4

Track 2

Track 6

Other Bit

Detailed description: This musical score block covers measures 59 and 60. It consists of five staves. Track 5 (treble clef) and Track 4 (bass clef) both play eighth notes with accents throughout both measures. Track 2 (bass clef) has a bass line that starts with a sharp sign (#) in measure 60. Track 6 (bass clef) is empty. The 'Other Bit' staff (treble clef) contains a simple melody of quarter notes.



61

Track 5

Track 4

Track 2

Track 6

Other Bit

Detailed description: This musical score block covers measures 61 and 62. It consists of five staves. Track 5 (treble clef) and Track 4 (bass clef) both play eighth notes with accents throughout both measures. Track 2 (bass clef) has a bass line that starts with a sharp sign (#) in measure 62. Track 6 (bass clef) is empty. The 'Other Bit' staff (treble clef) contains a simple melody of quarter notes.

62

Track 5

Track 4

Track 2

Track 6

Other Bit



63

Track 5

Track 4

Track 2

Track 6

Other Bit

64

Track 5

Track 4

Track 2

Track 6

Other Bit



65

Track 5

Track 4

Track 2

Track 6

Other Bit

66

Track 5

Track 4

Track 2

Track 6

Other Bit



68

Track 5

Track 4

Track 2

Track 6

Other Bit

70

Track 5

Track 4

Track 2

Track 6

Other Bit



71

Track 5

Track 4

Track 2

Track 6

Other Bit

Travis - Driftwood

Track 5

♩ = 80,000000

3

5

7

9

11

13

15

17

19

V.S.

21



23



25



27



29



31



33



35



37



39



41

43

45

47

49

51

53

55

57

59

V.S.

61



63



65



67



69



71



Travis - Driftwood

Track 4

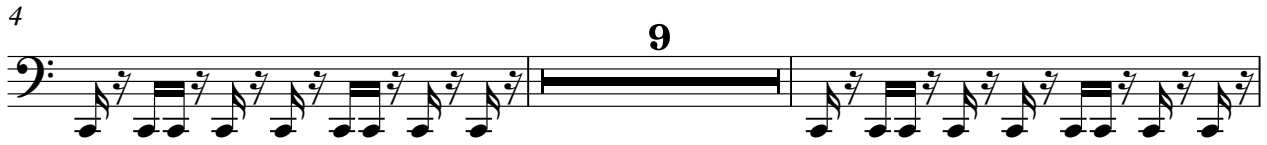
♩ = 80,000000

3



4

9



15



17

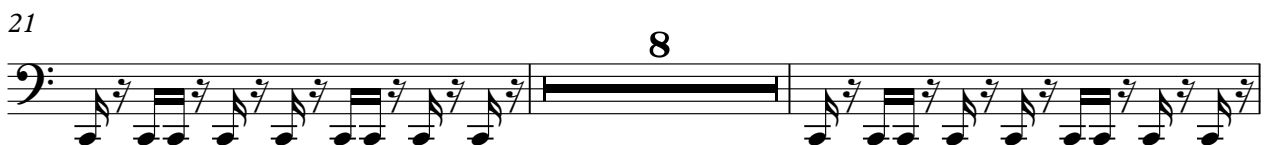


19



21

8



31



33



35



37

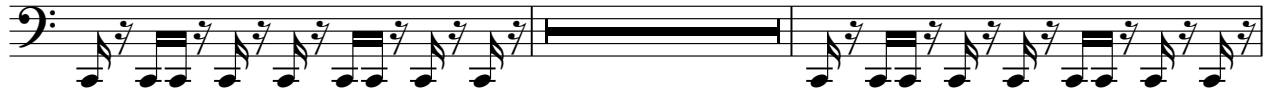


V.S.

39



41



51



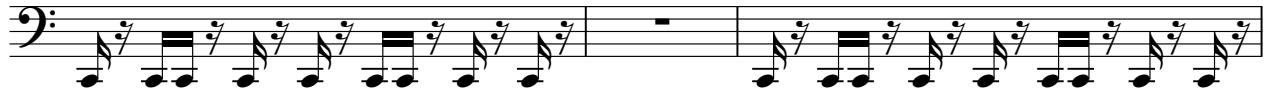
53



55



57



60



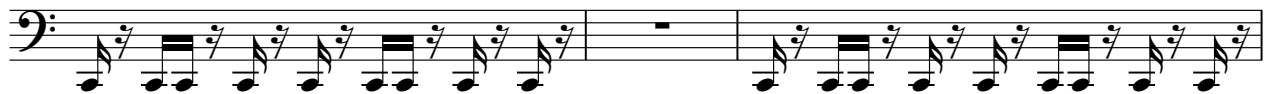
62



64



66



69



71



Travis - Driftwood

Track 2

The image displays a guitar tablature for the second track of Travis's album 'Driftwood'. The music is written in a key with one sharp (F#) and a 4/4 time signature. The tempo is marked as 80. The notation consists of ten staves, each representing a measure of music. The first staff includes a treble clef, a key signature of one sharp, and a tempo marking of 80. The subsequent staves are numbered 6, 9, 12, 15, 18, 21, 24, 27, and 29, indicating the fret position for the first note of each measure. The tablature uses a mix of eighth and quarter notes, with some measures containing rests. The final measure (staff 29) is followed by a double bar line and the number 12, indicating the end of the track.

2
42

45

48

51

54

57

61

64

67

70

Track #

Travis - Driftwood

Track 6

♩ = 80,000000

The image displays a guitar tablature for the song 'Driftwood' by Travis. It consists of ten systems of six-line staves. The first system includes a tempo marking of 80,000000 and a measure number '2'. The second system has a measure number '5' and a measure number '9' above a bar line. The third system has measure numbers '18' and '8'. The fourth system has measure numbers '30' and '12'. The fifth system has measure numbers '36' and '12'. The sixth system has measure numbers '52' and '12'. The seventh system has measure numbers '58' and '12'. The eighth system has measure numbers '64' and '12'. The ninth system has measure numbers '69' and '12'. The notation includes various fret numbers (e.g., 2, 3, 4, 5, 6, 7, 8, 9, 10, 11, 12) and accidentals (sharps) on the strings. There are also some rests and bar lines throughout the piece.

Track 3

Travis - Driftwood

♩ = 80,000000

5

25

34

39

31

Travis - Driftwood

Verse

♩ = 80,000000

4

8

12 9

24

28 12

43

47 23

Travis - Driftwood

Chorus

♩ = 80,000000

12

16

21

28

52

56

14

