

The Champs - Tequila 1

♩ = 91,000092

MELODY

BARITONSAX

BARITONSAX

DRUMS

STEEL GTR

MUTED GTR

JAZZ GTR

STEEL GTR

ACOU BASS



5

DRUMS

STEEL GTR

STEEL GTR

ACOU BASS



8

MELODY

DRUMS

STEEL GTR

MUTED GTR

STEEL GTR

ACOU BASS

MELODY

DRUMS

STEEL GTR

MUTED GTR

STEEL GTR

ACOU BASS

11



MELODY

BARITONSAX

DRUMS

STEEL GTR

MUTED GTR

STEEL GTR

ACOU BASS

13



MELODY

BARITONSAX

DRUMS

STEEL GTR

MUTED GTR

STEEL GTR

ACOU BASS

15

MELODY

BARITONSAX

DRUMS

STEEL GTR

MUTED GTR

STEEL GTR

ACOU BASS

MELODY

BARITONSAX

DRUMS

STEEL GTR

JAZZ GTR

STEEL GTR

ACOU BASS

MELODY

BARITONSAX

BARITONSAX

DRUMS

STEEL GTR

JAZZ GTR

STEEL GTR

ACOU BASS

MELODY ²³

DRUMS

STEEL GTR

MUTED GTR

STEEL GTR

ACOU BASS



MELODY ²⁵

DRUMS

STEEL GTR

MUTED GTR

STEEL GTR

ACOU BASS



MELODY ²⁸

DRUMS

STEEL GTR

MUTED GTR

STEEL GTR

ACOU BASS

MELODY

DRUMS

STEEL GTR

MUTED GTR

STEEL GTR

ACOU BASS



MELODY

DRUMS

STEEL GTR

MUTED GTR

STEEL GTR

ACOU BASS



MELODY

BARITONSAX

DRUMS

STEEL GTR

MUTED GTR

JAZZ GTR

STEEL GTR

ACOU BASS

MELODY

BARITONSAX

DRUMS

STEEL GTR

JAZZ GTR

STEEL GTR

ACOU BASS

MELODY

BARITONSAX

BARITONSAX

DRUMS

STEEL GTR

MUTED GTR

JAZZ GTR

STEEL GTR

ACOU BASS

MELODY

DRUMS

STEEL GTR

MUTED GTR

STEEL GTR

ACOU BASS

42

MELODY

DRUMS

STEEL GTR

MUTED GTR

STEEL GTR

ACOU BASS



45

DRUMS

STEEL GTR

MUTED GTR

STEEL GTR

ACOU BASS



48

DRUMS

STEEL GTR

STEEL GTR

ACOU BASS

50

MELODY

BARITONSAX

BARITONSAX

DRUMS

STEEL GTR

MUTED GTR

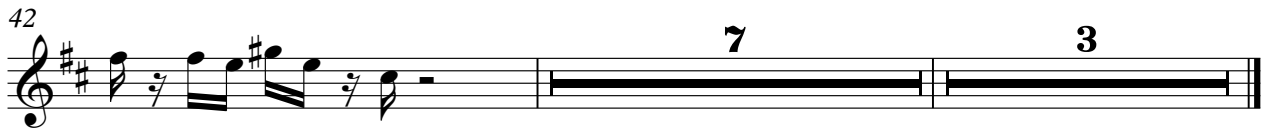
JAZZ GTR

STEEL GTR

ACOU BASS

2

MELODY



BARITONSAX

The Champs - Tequila 1

♩ = 91,000092

20 15

38

11 2

DRUMS

The Champs - Tequila 1

♩ = 91,000092

Musical notation for drum part, measures 1-2. The notation shows a 4/4 time signature and a sequence of eighth notes with accents.

5

Musical notation for drum part, measures 3-4. The notation shows a sequence of eighth notes with accents.

7

Musical notation for drum part, measures 5-6. The notation shows a complex pattern of eighth notes with accents.

9

Musical notation for drum part, measures 7-8. The notation shows a complex pattern of eighth notes with accents.

11

Musical notation for drum part, measures 9-10. The notation shows a complex pattern of eighth notes with accents.

13

Musical notation for drum part, measures 11-12. The notation shows a complex pattern of eighth notes with accents.

15

Musical notation for drum part, measures 13-14. The notation shows a complex pattern of eighth notes with accents.

17

Musical notation for drum part, measures 15-16. The notation shows a complex pattern of eighth notes with accents.

19

Musical notation for drum part, measures 17-18. The notation shows a complex pattern of eighth notes with accents.

21

Musical notation for drum part, measures 19-20. The notation shows a complex pattern of eighth notes with accents.

V.S.

23

25

27

29

31

33

35

37

39

41

DRUMS

43

Musical notation for drum set, measures 43-44. The notation is written on a five-line staff with a double bar line at the beginning. It features a complex rhythmic pattern with many beamed eighth and sixteenth notes, typical of a drum set score. The pattern is consistent across both measures.

45

Musical notation for drum set, measures 45-46. The notation is written on a five-line staff with a double bar line at the beginning. It features a complex rhythmic pattern with many beamed eighth and sixteenth notes, typical of a drum set score. The pattern is consistent across both measures.

47

Musical notation for drum set, measures 47-48. The notation is written on a five-line staff with a double bar line at the beginning. It features a complex rhythmic pattern with many beamed eighth and sixteenth notes, typical of a drum set score. The pattern is consistent across both measures.

49

Musical notation for drum set, measures 49-50. The notation is written on a five-line staff with a double bar line at the beginning. It features a complex rhythmic pattern with many beamed eighth and sixteenth notes, typical of a drum set score. The pattern is consistent across both measures. A large number '2' is placed above the second measure, indicating a second ending or a specific drum part.

STEEL GTR

The Champs - Tequila 1

♩ = 91,000092

5

7

9

11

13

15

17

19

21

V.S.

23



25



27



29



31



33



35



37



39



41



43



Musical notation for measure 43, featuring a sequence of chords and rhythmic patterns on a treble clef staff.

45



Musical notation for measure 45, continuing the sequence of chords and rhythmic patterns on a treble clef staff.

47



Musical notation for measure 47, continuing the sequence of chords and rhythmic patterns on a treble clef staff.

49



Musical notation for measure 49, concluding with a double bar line and a fermata marked with the number 2.

MUTED GTR

The Champs - Tequila 1

♩ = 91,000092

7

10

12

14

16

18

4

24

26

28

30

V.S.

32



34



40



42



44



♩ = 91,000092

17

20

22

12

36

38

11

3

♩ = 91,000092

5

7

9

11

13

15

17

19

21

23



25



27



29



31



33



35



37



39



41



ACOU BASS

The Champs - Tequila 1

♩ = 91,000092

3



8



13



18



22



27



32



36



40



45



V.S.

2

ACOU BASS

48

3