

The Everly Brothers - Cathy's Clown

♩ = 120,000000

Musical score for the first system of 'Cathy's Clown'. The score is in 4/4 time and features six staves: SNARE DRUM, BASS DRUM, CLOSED H.H., STEEL GTR, ACOU BASS, and A.PIANO 1. The tempo is marked as ♩ = 120,000000. The SNARE DRUM part includes triplet patterns. The STEEL GTR part features a rhythmic pattern with chords. The A.PIANO 1 part includes a complex chordal accompaniment with many ledger lines below the staff.



Musical score for the second system of 'Cathy's Clown'. The score continues from the first system and includes a MELODY staff. The MELODY part features a simple melodic line. The other instruments (SNARE DRUM, BASS DRUM, CLOSED H.H., STEEL GTR, ACOU BASS, and A.PIANO 1) continue their respective parts. The SNARE DRUM part includes a triplet pattern. The A.PIANO 1 part continues with its complex chordal accompaniment.

8

SNARE DRUM

BASS DRUM

CLOSED H.H

STEEL GTR

MELODY

ACOU BASS

A.PIANO 1



11

SNARE DRUM

BASS DRUM

CLOSED H.H

STEEL GTR

MELODY

ACOU BASS

A.PIANO 1

14

SNARE DRUM

BASS DRUM

CLOSED H.H

STEEL GTR

MELODY

ACOU BASS

A.PIANO 1

Detailed description: This system contains measures 14, 15, and 16. The SNARE DRUM part features a consistent pattern of a quarter note followed by a triplet of eighth notes. The BASS DRUM part has a simple pattern of quarter notes. The CLOSED H.H part uses a combination of circles and 'x' marks to indicate hits. The STEEL GTR part shows a sequence of chords and melodic lines. The MELODY part has a few notes, including a long note in measure 15. The ACOU BASS part consists of a few notes. The A.PIANO 1 part features a complex texture with many notes, some of which are beamed together.



17

SNARE DRUM

BASS DRUM

CLOSED H.H

STEEL GTR

MELODY

ACOU BASS

A.PIANO 1

Detailed description: This system contains measures 17, 18, and 19. The SNARE DRUM part continues with the quarter note and triplet eighth note pattern. The BASS DRUM part has a similar pattern to the previous system. The CLOSED H.H part uses circles and 'x' marks. The STEEL GTR part shows a sequence of chords and melodic lines. The MELODY part has a few notes, including a long note in measure 17. The ACOU BASS part consists of a few notes. The A.PIANO 1 part features a complex texture with many notes, some of which are beamed together.

20

SNARE DRUM

BASS DRUM

CLOSED H.H

STEEL GTR

MELODY

ACOU BASS

A.PIANO 1



23

SNARE DRUM

BASS DRUM

CLOSED H.H

RIDE CYMB

STEEL GTR

MELODY

ACOU BASS

A.PIANO 1

25

SNARE DRUM

BASS DRUM

CLOSED H.H

RIDE CYMB

STEEL GTR

MELODY

ACOU BASS

A.PIANO 1



27

SNARE DRUM

BASS DRUM

CLOSED H.H

RIDE CYMB

STEEL GTR

MELODY

ACOU BASS

A.PIANO 1

30

SNARE DRUM

BASS DRUM

CLOSED H.H

STEEL GTR

MELODY

ACOU BASS

A.PIANO 1



33

SNARE DRUM

BASS DRUM

CLOSED H.H

STEEL GTR

MELODY

ACOU BASS

A.PIANO 1

36

SNARE DRUM

BASS DRUM

CLOSED H.H

STEEL GTR

MELODY

ACOU BASS

A.PIANO 1

Detailed description: This block contains the musical notation for measures 36, 37, and 38. The SNARE DRUM part features a repeating pattern of a quarter note followed by a triplet of eighth notes. The BASS DRUM part has a simple pattern of quarter notes. The CLOSED H.H part consists of a quarter note followed by a quarter rest, with an 'x' mark above the rest. The STEEL GTR part shows a series of chords with a rhythmic pattern of quarter notes and eighth notes. The MELODY part has a few notes, including a triplet of eighth notes. The ACOU BASS part has a simple pattern of quarter notes. The A.PIANO 1 part has a complex pattern of chords and notes.



39

SNARE DRUM

BASS DRUM

CLOSED H.H

STEEL GTR

MELODY

ACOU BASS

A.PIANO 1

Detailed description: This block contains the musical notation for measures 39, 40, and 41. The SNARE DRUM part continues with the same pattern as in the previous block. The BASS DRUM part has a simple pattern of quarter notes. The CLOSED H.H part consists of a quarter note followed by a quarter rest, with an 'x' mark above the rest. The STEEL GTR part shows a series of chords with a rhythmic pattern of quarter notes and eighth notes. The MELODY part has a few notes, including a triplet of eighth notes. The ACOU BASS part has a simple pattern of quarter notes. The A.PIANO 1 part has a complex pattern of chords and notes.

42

SNARE DRUM

BASS DRUM

CLOSED H.H

STEEL GTR

MELODY

ACOU BASS

A.PIANO 1



45

SNARE DRUM

BASS DRUM

CLOSED H.H

RIDE CYMB

STEEL GTR

MELODY

ACOU BASS

A.PIANO 1

48

SNARE DRUM

BASS DRUM

CLOSED H.H

RIDE CYMB

STEEL GTR

MELODY

ACOU BASS

A.PIANO 1



50

SNARE DRUM

BASS DRUM

CLOSED H.H

RIDE CYMB

STEEL GTR

MELODY

ACOU BASS

A.PIANO 1

53

SNARE DRUM

BASS DRUM

CLOSED H.H

RIDE CYMB

STEEL GTR

MELODY

ACOU BASS

A.PIANO 1



56

SNARE DRUM

BASS DRUM

CLOSED H.H

STEEL GTR

MELODY

ACOU BASS

A.PIANO 1

59

SNARE DRUM

BASS DRUM

CLOSED H.H

STEEL GTR

MELODY

ACOU BASS

A.PIANO 1



62

SNARE DRUM

BASS DRUM

CLOSED H.H

STEEL GTR

MELODY

ACOU BASS

A.PIANO 1

65

SNARE DRUM

BASS DRUM

CLOSED H.H

STEEL GTR

MELODY

ACOU BASS

A.PIANO 1



68

SNARE DRUM

BASS DRUM

CLOSED H.H

STEEL GTR

MELODY

ACOU BASS

A.PIANO 1

71

SNARE DRUM

BASS DRUM

CLOSED H.H

STEEL GTR

MELODY

ACOU BASS

A.PIANO 1

Detailed description: This block contains the musical score for measures 71 and 72. It features seven staves: SNARE DRUM, BASS DRUM, CLOSED H.H, STEEL GTR, MELODY, ACOU BASS, and A.PIANO 1. The SNARE DRUM part has a triplet of eighth notes in measures 71 and 72. The BASS DRUM part has a single eighth note in measure 71 and a quarter note in measure 72. The CLOSED H.H part has a single eighth note in measure 71 and a quarter note in measure 72. The STEEL GTR part has a rhythmic pattern of eighth notes and rests. The MELODY part has a half note in measure 71 and a quarter note in measure 72. The ACOU BASS part has a half note in measure 71 and a quarter note in measure 72. The A.PIANO 1 part has a complex rhythmic pattern of eighth notes and rests.



73

SNARE DRUM

BASS DRUM

CLOSED H.H

STEEL GTR

MELODY

ACOU BASS

A.PIANO 1

Detailed description: This block contains the musical score for measures 73 and 74. It features seven staves: SNARE DRUM, BASS DRUM, CLOSED H.H, STEEL GTR, MELODY, ACOU BASS, and A.PIANO 1. The SNARE DRUM part has a triplet of eighth notes in measure 73 and a quarter note in measure 74. The BASS DRUM part has a single eighth note in measure 73 and a quarter note in measure 74. The CLOSED H.H part has a single eighth note in measure 73 and a quarter note in measure 74. The STEEL GTR part has a rhythmic pattern of eighth notes and rests. The MELODY part has a half note in measure 73 and a quarter note in measure 74. The ACOU BASS part has a half note in measure 73 and a quarter note in measure 74. The A.PIANO 1 part has a complex rhythmic pattern of eighth notes and rests.

SNARE DRUM

The Everly Brothers - Cathy`s Clown

♩ = 120,000000

2

7

11

15

20

25

30

35

39

44

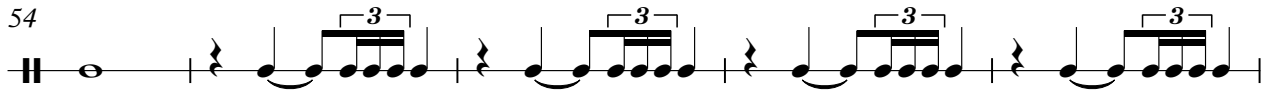
V.S.

SNARE DRUM

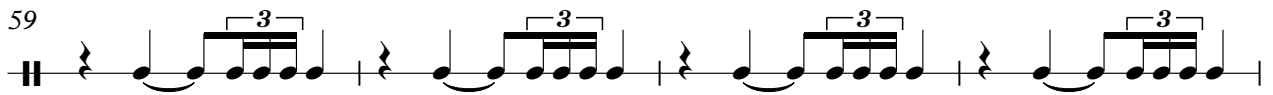
49



54



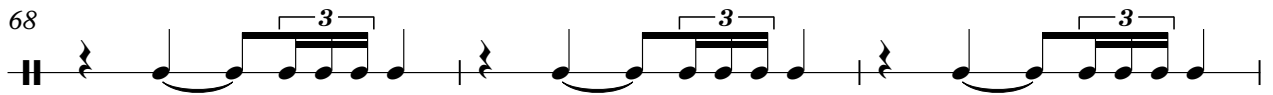
59



63



68



71



BASS DRUM

The Everly Brothers - Cathy`s Clown

♩ = 120,000000

2



8



14



20



26



32



38



44



50



56



V.S.

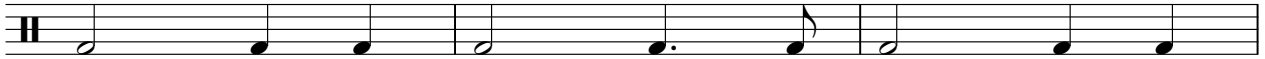
2

BASS DRUM

62



68



71



The Everly Brothers - Cathy`s Clown

CLOSED H.H

♩ = 120,000000

2

8

14

20

25

29

35

41

47

51

V.S.

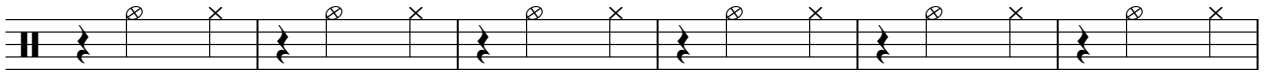
2

CLOSED H.H

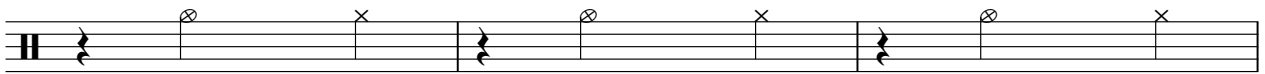
56



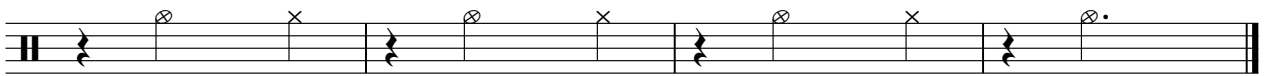
62



68



71



RIDE CYMB

The Everly Brothers - Cathy`s Clown

♩ = 120,000000

22

27

17

48

52

21

The Everly Brothers - Cathy`s Clown

STEEL GTR

♩ = 120,000000

2



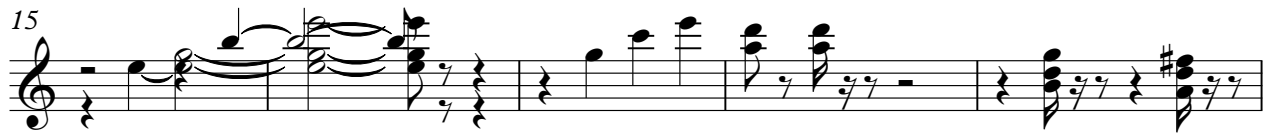
7



11



15



20



24



28



32



36



40



V.S.

The Everly Brothers - Cathy`s Clown

MELODY

♩ = 120,000000

5

10

16

22

27

33

38

44

50

55

V.S.

2

MELODY

60

This system of musical notation contains measures 60 through 65. It is written on a single treble clef staff. Measure 60 begins with a half note chord. The melody starts with a quarter note, followed by a quarter note with a grace note, and then a half note. Measure 61 features a quarter rest followed by a quarter note, a quarter note, and a half note. Measure 62 contains a half note chord. Measure 63 has a quarter note, a quarter note with a grace note, and a half note. Measure 64 consists of a quarter note, a quarter note, and a half note. Measure 65 ends with a quarter note and a quarter rest.

66

This system of musical notation contains measures 66 through 70. It is written on a single treble clef staff. Measure 66 starts with a quarter rest, followed by a quarter note, a quarter note, and a half note. Measure 67 contains a quarter note, a quarter note, a quarter note, and a half note. Measure 68 has a quarter note, a quarter note with a grace note, and a half note. Measure 69 features a quarter note, a quarter note with a grace note, and a half note. Measure 70 ends with a quarter note and a quarter rest.

71

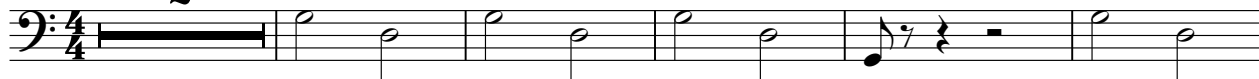
This system of musical notation contains measures 71 through 75. It is written on a single treble clef staff. Measure 71 begins with a quarter note, followed by a half note, a quarter note, and a half note. Measure 72 contains a quarter note, a quarter note with a grace note, and a half note. Measure 73 has a quarter note, a quarter note, and a half note. Measure 74 features a half note chord. Measure 75 ends with a quarter note and a quarter rest.

ACOU BASS

The Everly Brothers - Cathy`s Clown

♩ = 120,000000

2



8



15



21



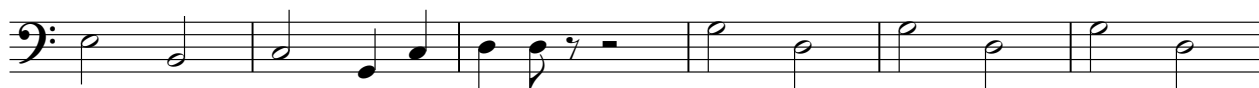
27



33



40



46



52



58



V.S.

2

ACOU BASS

65



70



The Everly Brothers - Cathy`s Clown

A.PIANO 1

♩ = 120,000000

2

6

10

14

18

22

25

28

32

36

V.S.

40

44

48

This section contains musical notation for measures 40 through 50. It consists of three systems of staves. Each system has a treble clef staff with a melodic line and a bass clef staff with a complex accompaniment of chords and arpeggios. Measure numbers 40, 44, and 48 are indicated at the start of their respective systems.

51

This section contains musical notation for measures 51 through 53. It consists of a single system of staves with a treble clef staff and a bass clef staff. Measure number 51 is indicated at the start.

54

58

This section contains musical notation for measures 54 through 61. It consists of two systems of staves. Each system has a treble clef staff and a bass clef staff. Measure numbers 54 and 58 are indicated at the start of their respective systems.

62

66

This section contains musical notation for measures 62 through 69. It consists of two systems of staves. Each system has a treble clef staff and a bass clef staff. Measure numbers 62 and 66 are indicated at the start of their respective systems.

70

72

This section contains musical notation for measures 70 through 75. It consists of two systems of staves. Each system has a treble clef staff and a bass clef staff. Measure numbers 70 and 72 are indicated at the start of their respective systems.

76

79

This section contains musical notation for measures 76 through 82. It consists of two systems of staves. Each system has a treble clef staff and a bass clef staff. Measure numbers 76 and 79 are indicated at the start of their respective systems.

83

86

This section contains musical notation for measures 83 through 89. It consists of two systems of staves. Each system has a treble clef staff and a bass clef staff. Measure numbers 83 and 86 are indicated at the start of their respective systems.

90

93

This section contains musical notation for measures 90 through 96. It consists of two systems of staves. Each system has a treble clef staff and a bass clef staff. Measure numbers 90 and 93 are indicated at the start of their respective systems.