

The Tremeloes - My Little Lady 2

♩ = 130,002380

TRUMPET

DRUMS

CLEAN GTR

FINGERDBAS

CHOIR AAHS

MELODY

♩ = 130,002380

BASS&LEAD

A.PIANO 1



4

DRUMS

FINGERDBAS

MELODY

A.PIANO 1

6

DRUMS

FINGERDBAS

MELODY

A.PIANO 1

This system contains measures 6 and 7. The DRUMS staff shows a pattern of quarter notes. The FINGERDBAS staff has a bass line with eighth notes and rests. The MELODY staff features a melodic line with eighth notes and a triplet of eighth notes in measure 7. The A.PIANO 1 staff consists of a dense accompaniment of chords with eighth notes. A double bar line is located at the end of the system.

8

DRUMS

FINGERDBAS

MELODY

A.PIANO 1

This system contains measures 8 and 9. The DRUMS staff continues with quarter notes. The FINGERDBAS staff has a bass line with eighth notes and rests. The MELODY staff features a melodic line with eighth notes and a half note in measure 9. The A.PIANO 1 staff consists of a dense accompaniment of chords with eighth notes. A double bar line is located at the end of the system.

10

DRUMS

FINGERDBAS

MELODY

A.PIANO 1

This system contains measures 10 and 11. The DRUMS staff continues with quarter notes. The FINGERDBAS staff has a bass line with eighth notes and rests. The MELODY staff features a melodic line with eighth notes and a half note in measure 11. The A.PIANO 1 staff consists of a dense accompaniment of chords with eighth notes.

12

DRUMS

FINGERDBAS

MELODY

A.PIANO 1



14

DRUMS

FINGERDBAS

MELODY

A.PIANO 1



16

DRUMS

FINGERDBAS

MELODY

A.PIANO 1

18

DRUMS

CLEAN GTR

FINGERDBAS

CHOIR AAHS

MELODY

A.PIANO 1



20

DRUMS

CLEAN GTR

FINGERDBAS

CHOIR AAHS

MELODY

A.PIANO 1

22

DRUMS

CLEAN GTR

FINGERDBAS

CHOIR AAHS

MELODY

A.PIANO 1



24

DRUMS

CLEAN GTR

FINGERDBAS

CHOIR AAHS

MELODY

A.PIANO 1

26

DRUMS

FINGERDBAS

MELODY

A.PIANO 1

26

27

28

DRUMS

FINGERDBAS

MELODY

A.PIANO 1

28

29

30

TRUMPET

DRUMS

FINGERDBAS

MELODY

A.PIANO 1

30

31

32

DRUMS

FINGERDBAS

MELODY

A.PIANO 1



34

TRUMPET

DRUMS

FINGERDBAS

MELODY

A.PIANO 1



36

DRUMS

FINGERDBAS

MELODY

A.PIANO 1

38

TRUMPET

DRUMS

CLEAN GTR

FINGERDBAS

CHOIR AAHS

MELODY

A.PIANO 1

40

TRUMPET

DRUMS

CLEAN GTR

FINGERDBAS

CHOIR AAHS

MELODY

A.PIANO 1

42

TRUMPET

DRUMS

CLEAN GTR

FINGERDBAS

CHOIR AAHS

MELODY

A.PIANO 1



44

TRUMPET

DRUMS

CLEAN GTR

FINGERDBAS

CHOIR AAHS

MELODY

A.PIANO 1

46

TRUMPET

DRUMS

CLEAN GTR

FINGERDBAS

MELODY

BASS&LEAD

A.PIANO 1

47

TRUMPET

DRUMS

CLEAN GTR

FINGERDBAS

BASS&LEAD

A.PIANO 1

48

TRUMPET

DRUMS

CLEAN GTR

FINGERBAS

BASS&LEAD

A.PIANO 1

≡

50

TRUMPET

DRUMS

CLEAN GTR

FINGERBAS

BASS&LEAD

A.PIANO 1

51

TRUMPET

DRUMS

CLEAN GTR

FINGERDBAS

BASS&LEAD

A.PIANO 1

≡

52

TRUMPET

DRUMS

CLEAN GTR

FINGERDBAS

BASS&LEAD

A.PIANO 1

53

TRUMPET

DRUMS

CLEAN GTR

FINGERDBAS

BASS&LEAD

A.PIANO 1

≡

54

TRUMPET

DRUMS

CLEAN GTR

FINGERDBAS

BASS&LEAD

A.PIANO 1

55

TRUMPET

DRUMS

CLEAN GTR

FINGERDBAS

BASS&LEAD

A.PIANO 1



57

TRUMPET

DRUMS

CLEAN GTR

FINGERDBAS

A.PIANO 1

58

TRUMPET

DRUMS

CLEAN GTR

FINGERDBAS

A.PIANO 1

59

TRUMPET

DRUMS

CLEAN GTR

FINGERDBAS

CHOIR AAHS

MELODY

A.PIANO 1

61

TRUMPET

DRUMS

CLEAN GTR

FINGERDBAS

CHOIR AAHS

MELODY

A.PIANO 1

This system contains measures 61 and 62. The Trumpet part features a melodic line with eighth notes and rests. The Drums part shows a steady rhythm with snare and bass drum patterns. The Clean Guitar part has a rhythmic accompaniment of eighth notes. The Finger Bass part provides a bass line with quarter notes. The Choir Ahhs part has a sustained chord. The Melody part has a line of quarter notes. The A. Piano 1 part has a complex accompaniment with sixteenth notes and chords.

62

TRUMPET

DRUMS

CLEAN GTR

FINGERDBAS

CHOIR AAHS

MELODY

A.PIANO 1

This system continues measures 61 and 62. The Trumpet part continues its melodic line. The Drums part maintains the rhythmic pattern. The Clean Guitar part continues its accompaniment. The Finger Bass part continues its bass line. The Choir Ahhs part has a sustained chord. The Melody part continues its line. The A. Piano 1 part continues its accompaniment.

This system continues measures 61 and 62. The Trumpet part continues its melodic line. The Drums part maintains the rhythmic pattern. The Clean Guitar part continues its accompaniment. The Finger Bass part continues its bass line. The Choir Ahhs part has a sustained chord. The Melody part continues its line. The A. Piano 1 part continues its accompaniment.

64

TRUMPET

DRUMS

CLEAN GTR

FINGERDBAS

CHOIR AAHS

MELODY

A.PIANO 1



65

TRUMPET

DRUMS

CLEAN GTR

FINGERDBAS

CHOIR AAHS

MELODY

A.PIANO 1

66

TRUMPET

DRUMS

CLEAN GTR

FINGERDBAS

MELODY

A.PIANO 1

68

TRUMPET

DRUMS

CLEAN GTR

FINGERDBAS

CHOIR AAHS

MELODY

A.PIANO 1

70

TRUMPET

DRUMS

CLEAN GTR

FINGERDBAS

CHOIR AAHS

MELODY

A.PIANO 1

==

72

TRUMPET

DRUMS

CLEAN GTR

FINGERDBAS

CHOIR AAHS

MELODY

A.PIANO 1

74

TRUMPET

DRUMS

CLEAN GTR

FINGERDBAS

CHOIR AAHS

MELODY

A.PIANO 1

76

TRUMPET

DRUMS

CLEAN GTR

FINGERDBAS

CHOIR AAHS

MELODY

A.PIANO 1

78

TRUMPET

DRUMS

CLEAN GTR

FINGERDBAS

CHOIR AAHS

MELODY

A.PIANO 1

==

80

TRUMPET

DRUMS

CLEAN GTR

FINGERDBAS

CHOIR AAHS

MELODY

A.PIANO 1

82

TRUMPET

DRUMS

CLEAN GTR

FINGERDBAS

MELODY

A.PIANO 1



84

TRUMPET

DRUMS

CLEAN GTR

FINGERDBAS

CHOIR AAHS

MELODY

A.PIANO 1

86

TRUMPET

DRUMS

CLEAN GTR

FINGERDBAS

CHOIR AAHS

MELODY

A.PIANO 1



88

TRUMPET

DRUMS

CLEAN GTR

FINGERDBAS

CHOIR AAHS

MELODY

A.PIANO 1

90

TRUMPET

DRUMS

CLEAN GTR

FINGERDBAS

CHOIR AAHS

MELODY

A.PIANO 1

Detailed description of the musical score: The score is for page 24, measures 90 and 91. It is written in a key with one sharp (F#) and a 4/4 time signature. The parts are: TRUMPET: Measures 90-91 consist of eighth-note chords (F#2, G3, A3) and rests. DRUMS: Measure 90 has a pattern of eighth notes (x, x, x, x) and eighth notes (G, A, B, C). Measure 91 has a cymbal crash followed by eighth notes (G, A, B, C). CLEAN GTR: Measures 90-91 consist of eighth-note chords (F#2, G3, A3) and rests. FINGERDBAS: Measures 90-91 consist of eighth notes (F#, G, A, B) and rests. CHOIR AAHS: Measures 90-91 are silent. MELODY: Measures 90-91 consist of eighth notes (F#, G, A, B) and rests. A.PIANO 1: Measures 90-91 consist of eighth-note chords (F#2, G3, A3) and eighth notes (F#, G, A, B).

92

TRUMPET

DRUMS

CLEAN GTR

FINGERDBAS

CHOIR AAHS

MELODY

BASS&LEAD

A.PIANO 1

The Tremeloes - My Little Lady 2

TRUMPET

♩ = 130,002380

28

34

40

43

46

49

52

54

58

61

V.S.

TRUMPET

64



67



70



73



76



79



82



85



88



90



The Tremeloes - My Little Lady 2

DRUMS

♩ = 130,002380

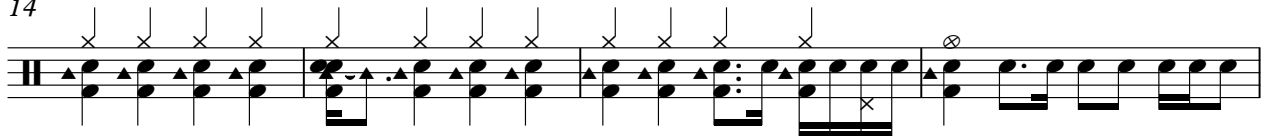
2



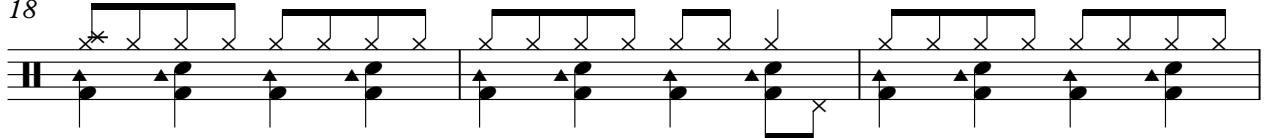
9



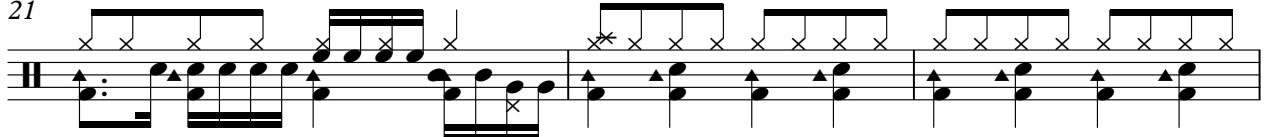
14



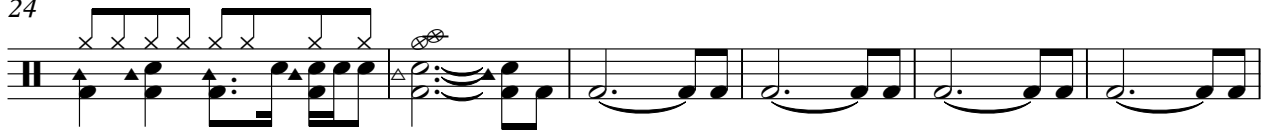
18



21



24



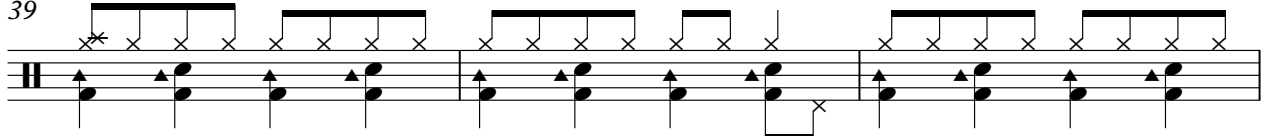
30



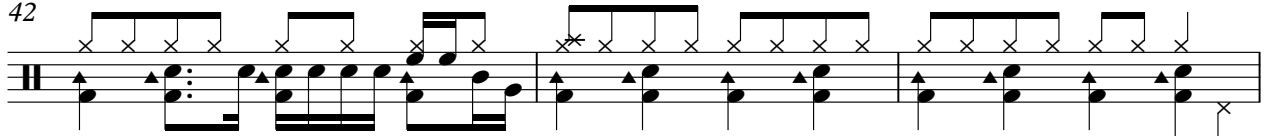
35



39



42



V.S.

45

51

56

60

64

67

71

74

78

82

DRUMS

86

Musical notation for a drum set at measure 86. The notation is on a single staff with a double bar line at the beginning. It features a series of rhythmic patterns: a sequence of eighth notes with 'x' marks above them, followed by a sequence of eighth notes with upward-pointing triangles above them. The patterns are grouped into measures by vertical bar lines.

89

Musical notation for a drum set at measure 89. The notation is on a single staff with a double bar line at the beginning. It features a series of rhythmic patterns: a sequence of eighth notes with 'x' marks above them, followed by a sequence of eighth notes with upward-pointing triangles above them. The notation ends with a double bar line and a large number '2' to the right, indicating a second ending.

♩ = 130,002380

16

19

21

23

26

13

41

43

45

49

54

Detailed description: The image shows a guitar score for 'My Little Lady 2' by The Tremeloes. It is written for clean guitar in 4/4 time with a tempo of 130 bpm. The score consists of ten staves of music. The first staff starts with a whole rest followed by a tremolo bar for 16 measures. The second staff begins at measure 19 with a continuous tremolo pattern. The third staff continues this pattern. The fourth staff ends with a dotted quarter note followed by a whole rest. The fifth staff starts with a tremolo bar for 13 measures, then continues with tremolos. The sixth staff continues the tremolo pattern. The seventh staff continues the tremolo pattern. The eighth staff features a mix of tremolos and quarter notes. The ninth staff continues with quarter notes and some tremolos. The tenth staff concludes with a final chord and a tremolo pattern.

59



62



64



66



69



71



73



76



78



80



82



85



87



89



91



♩ = 130,002380



7



11



15



20



25



30



34



38



43



V.S.

48



53



58



63



68



73



78



83



88

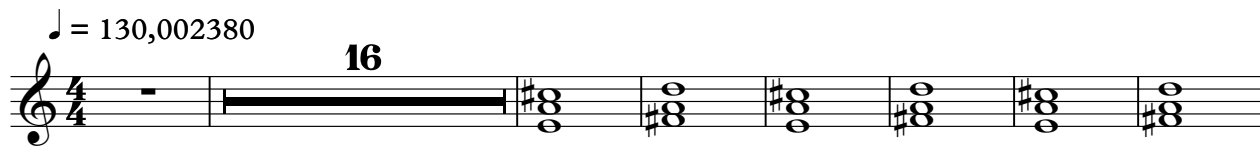


91



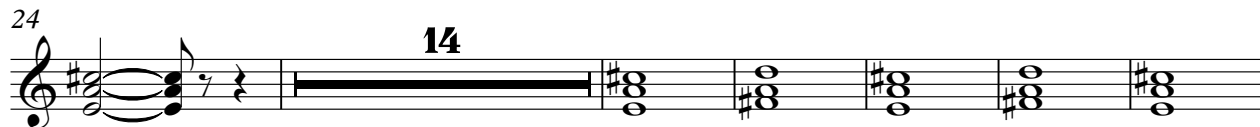
♩ = 130,002380

16



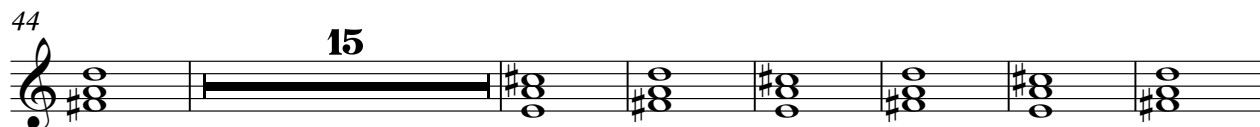
24

14



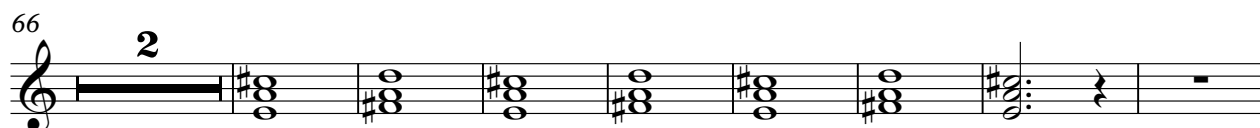
44

15



66

2



76

2



85

3



The Tremeloes - My Little Lady 2

MELODY

♩ = 130,002380

3

8

12

17

21

25

29

33

38

V.S.

MELODY

42

46

12

61

65

69

73

77

81

85

89

2

♩ = 130,002380

44

48

51

54

56

37

A.PIANO 1

The Tremeloes - My Little Lady 2

♩ = 130,002380

5

7

9

11

13

15

17

20

23

V.S.

A.PIANO 1

Musical score for A.PIANO 1, measures 25-43. The score is written on ten staves. Measures 25-36 feature a complex rhythmic pattern of eighth notes and chords. Measures 37-43 show a transition to a more melodic and harmonic style, with some notes beamed together and some measures containing rests. The key signature is one sharp (F#).

Musical score for A.PIANO 1, page 3, measures 45-62. The score is written for piano and consists of two staves per system. The key signature is one sharp (F#), and the time signature is 3/4. The music features a complex texture with multiple voices, including a prominent bass line and a melodic line in the upper register. The notation includes various rhythmic values, accidentals, and dynamic markings. The score is divided into systems, with measure numbers 45, 47, 49, 51, 53, 55, 57, 58, 60, and 62 indicated on the left side of the staves. The final measure of the system (measure 62) ends with a double bar line and a fermata, followed by the text 'V.S.' (Viva) on the right side of the page.

V.S.

Musical score for A.PIANO 1, measures 64-90. The score is written on a grand staff with two staves per system. The key signature is one sharp (F#) and the time signature is 4/4. The music features a complex rhythmic pattern with many sixteenth notes and rests. Measure numbers 64, 66, 68, 70, 73, 76, 79, 82, 85, and 88 are indicated at the beginning of their respective systems. The notation includes various note values, rests, and accidentals (sharps and naturals).

90

Musical notation for piano part 1, measure 90. The staff shows a complex rhythmic pattern with eighth and sixteenth notes, and a fermata with a '2' above it.