

# They Might Be Giants - Hall Of Heads

♩ = 93,000038

Drums I

Drums II

Guitar

Thing

This system contains the first four staves of the score. Drums I and II are in 4/4 time. The guitar and 'Thing' parts are in 4/4 time. The tempo is marked as ♩ = 93,000038. The guitar part features a melodic line with a sharp sign on the second string in the second measure. The 'Thing' part consists of eighth notes with a '7' above them, indicating a fretted note.



4

Drums I

Drums II

Guitar

Thing

This system contains the next four staves of the score, starting at measure 4. The instrumentation remains the same. The guitar part continues with its melodic line, and the 'Thing' part continues with its eighth-note pattern.



6

Drums I

Guitar

Thing

This system contains the final three staves of the score, starting at measure 6. The instrumentation remains the same. The guitar part concludes with a sharp sign on the second string in the final measure. The 'Thing' part continues with its eighth-note pattern.

8

Drums I

Drums II

Guitar

Thing



10

Drums I

Drums II

Guitar

Thing

6

6



11

Drums I

Guitar

Thing

14

Drums I

Guitar

Thing



16

Drums I

Drums II

Guitar

Thing



18 ♪ = 185,000183

Drums I

Guitar

Harpichord

Violin

♪ = 185,000183

20

Drums I

Guitar

Harpsichord

Violin



22

Drums I

Guitar

Harpsichord

Violin



24

Drums I

Guitar

Harpsichord

Violin

26

Drums I

Drums II

Guitar

Harpisichord

Violin

Detailed description: This system of music covers measures 26 and 27. It features five staves: Drums I, Drums II, Guitar, Harpischord, and Violin. Drums I has a rhythmic pattern of quarter notes in the first two measures, followed by eighth notes in the third. Drums II has a single drum symbol in the first measure and a rest in the second. The Guitar staff shows two chords in the first measure and a rest in the second. The Harpischord staff has a melodic line with eighth notes and rests in the first measure, and a chord in the second. The Violin staff has a bass line with quarter notes in the first measure and a half note in the second.



28

Drums I

Drums II

Guitar

Harpisichord

Violin

Detailed description: This system of music covers measures 28 and 29. It features five staves: Drums I, Drums II, Guitar, Harpischord, and Violin. Drums I has a rhythmic pattern of quarter notes in the first two measures, followed by eighth notes in the third. Drums II has a single drum symbol in the first measure and a rest in the second. The Guitar staff shows two chords in the first measure and a rest in the second. The Harpischord staff has a melodic line with eighth notes and rests in the first measure, and a chord in the second. The Violin staff has a bass line with quarter notes in the first measure and a half note in the second.

30

Drums I

Drums II

Guitar

Harpsichord

Violin



32

Drums I

Drums II

Guitar

Harpsichord

Violin

34  $\text{♩} = 175,000076$   $\text{♩} = 220,000204$

Sax

Drums I

Drums II

Guitar

Keyboard

Harpisichord

$\text{♩} = 175,000076$   $\text{♩} = 220,000204$

Violin



37

Sax

Drums I

Drums II

Guitar

Keyboard

41

Sax

Drums I

Drums II

Guitar

Keyboard

Voice



45

Drums I

Guitar

Keyboard

Voice



49

Drums I

Guitar

Keyboard

Voice



53

Drums I

Guitar

Keyboard

Voice

57

Sax

Drums I

Drums II

Guitar

Keyboard

Orchestra Hit

Voice

61

Sax

Drums I

Drums II

Keyboard

Orchestra Hit

Voice



65

Sax

Drums I

Drums II

Keyboard

Orchestra Hit

Voice

69

Sax

Drums I

Drums II

Keyboard

Orchestra Hit

Voice



73

Sax

Drums I

Drums II

Guitar

Keyboard

Voice

77

Sax

Drums I

Drums II

Guitar

Keyboard

Voice



81

Drums I

Guitar

Keyboard

Voice

85

Sax

Drums I

Drums II

Guitar

Keyboard

Orchestra Hit

Voice

Detailed description of the musical score: The score is for page 14, starting at measure 85. It features seven staves: Saxophone, Drums I, Drums II, Guitar, Keyboard, Orchestra Hit, and Voice. The Saxophone part has rests in measures 85 and 86, followed by a melodic line in measures 87 and 88. Drums I and II provide a rhythmic accompaniment. The Guitar part has a rhythmic accompaniment in measures 85 and 86, followed by rests in measures 87 and 88. The Keyboard part plays a steady accompaniment of eighth notes. The Orchestra Hit part has rests in measures 85 and 86, followed by a hit in measure 88. The Voice part has a vocal line starting in measure 85 and continuing through measure 88.

89

Sax

Drums I

Drums II

Keyboard

Orchestra Hit

Voice



93

Sax

Drums I

Drums II

Keyboard

Orchestra Hit

Voice

97

Sax

Drums I

Drums II

Keyboard

Orchestra Hit

Voice



101

Sax

Drums I

Drums II

Guitar

Keyboard

Voice



105

Drums I

Guitar



110

Drums I

Drums II

Guitar

Orchestra Hit



113

Drums I

Drums II

Guitar

Orchestra Hit

117

Sax

Drums I

Drums II

Guitar

Orchestra Hit

Voice



121

Sax

Drums I

Drums II

Guitar

Orchestra Hit

Voice

124

Sax

Drums I

Drums II

Guitar

Orchestra Hit

Voice



127

Sax

Drums I

Drums II

Guitar

Orchestra Hit

Voice

130

Sax

Drums I

Drums II

Guitar

Orchestra Hit

Voice



133

Sax

Drums I

Drums II

Guitar

Orchestra Hit

Voice

# They Might Be Giants - Hall Of Heads

Sax

♪ = 93,000038      ♪ = 185,000183      ♪ = 175,000076      ♪ = 220,000204

17 16

37

43 16

63

69

75 8

88

94

99 16

2

Sax

119



125



131



Drums I

They Might Be Giants - Hall Of Heads

♩ = 93,000038

5

9

13

♩ = 185,000183

17

23

29

♩ = 175,000076      ♩ = 220,000000

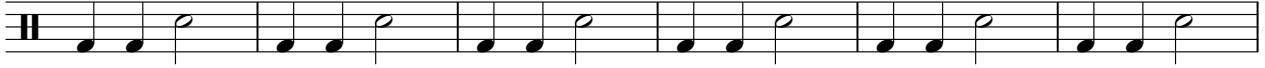
34

39

45

V.S.

51



57



63



69



75



81



87



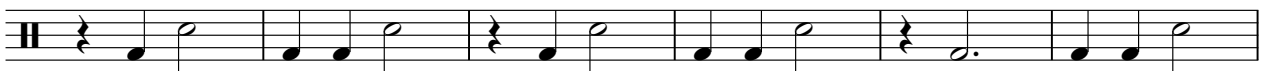
93



99



104







Drums II

They Might Be Giants - Hall Of Heads

♩ = 93,000038

10

18 ♩ = 185,000183

33 ♩ = 175,000076      ♩ = 220,000200

38

43

63

69

75

8

2

# Drums II

87



93



99



111



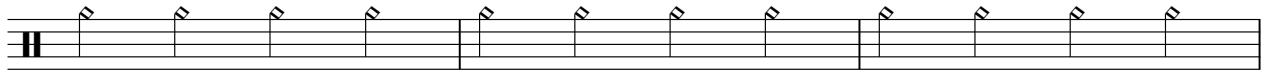
117



123



129



132



# They Might Be Giants - Hall Of Heads

Guitar

♩ = 93,000038

6

11

16

♩ = 185,000183

23

31

♩ = 175,000076 ♩ = 220,000204

38

45

52

57

**16**

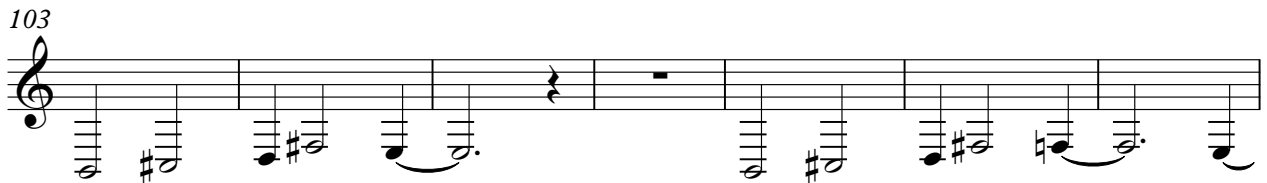
75



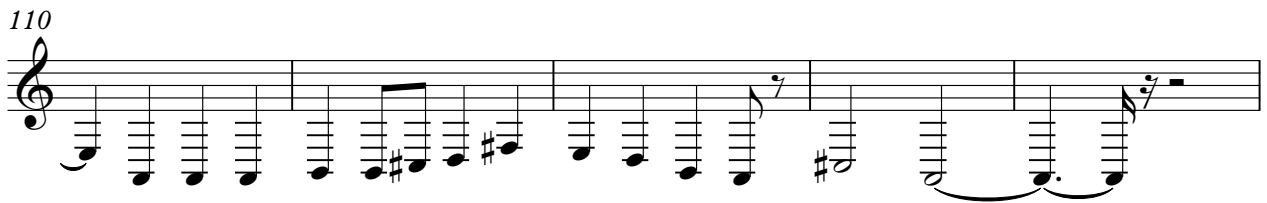
82



103



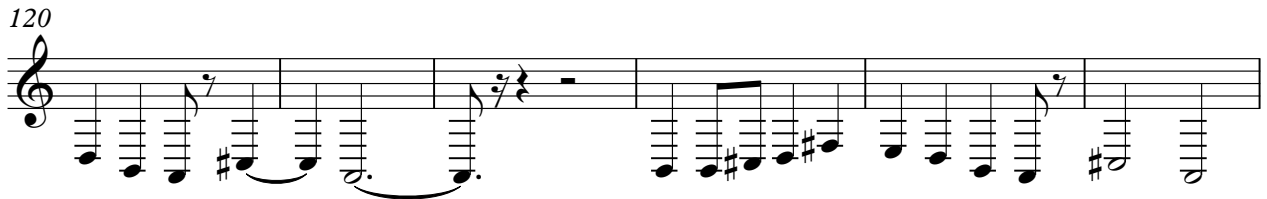
110



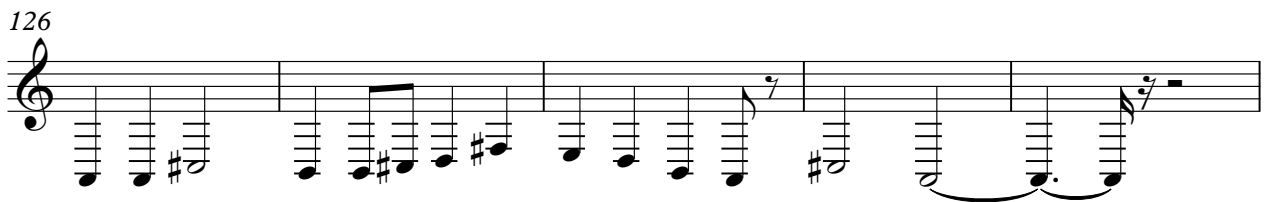
115



120



126



131



# They Might Be Giants - Hall Of Heads

Keyboard

♩ = 93,000038      ♩ = 185,000183      ♩ = 175,000076      ♩ = 220,000200

17      16

37

43

49

55

61

67

73

79

85

V.S.

2

Keyboard

91



97



101




Harpisichord

They Might Be Giants - Hall Of Heads

♩ = 93,000038                      ♩ = 185,000183

**17**



**20**



**23**



**26**



**29**

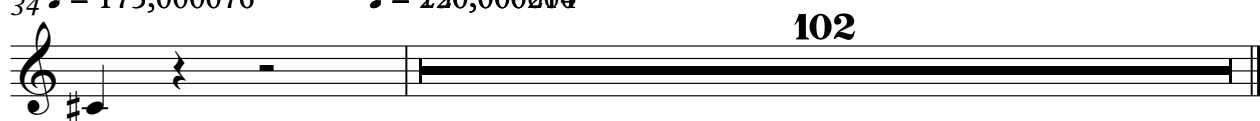


**32**



**34**    ♩ = 175,000076                      ♩ = 220,000200

**102**





# They Might Be Giants - Hall Of Heads

Orchestra Hit

♩ = 93,000038      ♩ = 185,000183      ♩ = 175,000076      ♩ = 210,000200

17      16      25

60      3      3      3

72      15      3

93      3      3      10

111

117

123

129

133

# They Might Be Giants - Hall Of Heads

Voice

♩ = 93,000038      ♩ = 185,000183      ♩ = 175,000175      ♩ = 180,000204

17      16      8

44

52

60

67

74      5

85

92

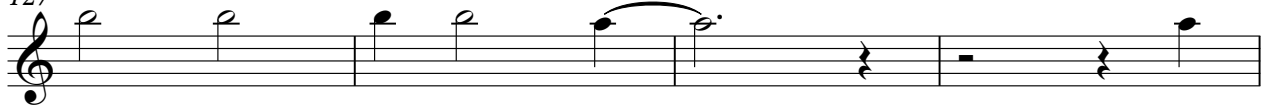
99      17

120

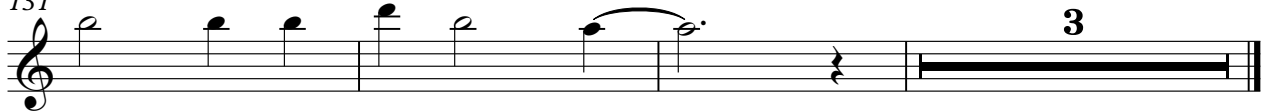
2

Voice

127



131



Violin

They Might Be Giants - Hall Of Heads

♩ = 93,000038      ♩ = 185,000183

17

Measures 17-21: A musical staff in 3/4 time with a key signature of one flat. Measure 17 is a whole rest. Measures 18-21 contain a melodic line: G4 (quarter), A4 (quarter), B4 (quarter), C5 (quarter), B4 (quarter), A4 (quarter), G4 (quarter), F4 (quarter), E4 (quarter), D4 (quarter), C4 (half).

22

Measures 22-25: A musical staff in 3/4 time with a key signature of one flat. Measures 22-25 contain a melodic line: G4 (quarter), A4 (quarter), B4 (quarter), C5 (quarter), B4 (quarter), A4 (quarter), G4 (quarter), F4 (quarter), E4 (quarter), D4 (quarter), C4 (half).

26

Measures 26-30: A musical staff in 3/4 time with a key signature of one flat. Measures 26-30 contain a melodic line: G4 (quarter), A4 (quarter), B4 (quarter), C5 (quarter), B4 (quarter), A4 (quarter), G4 (quarter), F4 (quarter), E4 (quarter), D4 (quarter), C4 (half).

31

Measures 31-35: A musical staff in 3/4 time with a key signature of one flat. Measures 31-35 contain a melodic line: G4 (quarter), A4 (quarter), B4 (quarter), C5 (quarter), B4 (quarter), A4 (quarter), G4 (quarter), F4 (quarter), E4 (quarter), D4 (quarter), C4 (half).

33      ♩ = 175,000076    ♩ = 220,000200      102

Measures 33-102: A musical staff in 3/4 time with a key signature of one flat. Measures 33-35 contain a melodic line: G4 (quarter), A4 (quarter), B4 (quarter), C5 (quarter), B4 (quarter), A4 (quarter), G4 (quarter), F4 (quarter), E4 (quarter), D4 (quarter), C4 (half). From measure 36 to 102, the staff is a whole rest.

Thing

They Might Be Giants - Hall Of Heads

♩ = 93,000038

6

11

16

♩ = 185,000183

**16**

34

♩ = 175,000076    ♩ = 220,000204

**102**