

Vengaboys - We're Going To Ibiza

$\text{♩} = 105,001572$

This system contains five staves: Tuba, Percussion, Fretless Electric Bass, Synth Bass, and Solo. The Tuba staff has a treble clef and a 4/4 time signature. The Percussion staff has a double bar line and a 4/4 time signature. The Fretless Electric Bass staff has a bass clef and a 4/4 time signature. The Synth Bass staff has a bass clef and a 4/4 time signature. The Solo staff has a treble clef and a 4/4 time signature. The tempo is marked as 105,001572. The music features a complex rhythmic pattern with many sixteenth notes and rests.

This system contains five staves: Tba., Perc., E. Bass, S. Bass, and Solo. The Tba. staff has a bass clef and a 4/4 time signature. The Perc. staff has a double bar line and a 4/4 time signature. The E. Bass staff has a bass clef and a 4/4 time signature. The S. Bass staff has a bass clef and a 4/4 time signature. The Solo staff has a treble clef and a 4/4 time signature. The music continues with the same complex rhythmic pattern as the first system.

This system contains five staves: Tba., Perc., E. Bass, S. Bass, and Solo. The Tba. staff has a bass clef and a 4/4 time signature. The Perc. staff has a double bar line and a 4/4 time signature. The E. Bass staff has a bass clef and a 4/4 time signature. The S. Bass staff has a bass clef and a 4/4 time signature. The Solo staff has a treble clef and a 4/4 time signature. The music continues with the same complex rhythmic pattern as the previous systems.

2

7

Tba.

Perc.

E. Bass

S. Bass

Solo



9

Fl.

Tba.

Perc.

E. Bass

S. Bass

FX 7

Solo

12

Fl.

Perc.

E. Bass

Org.

S. Bass

FX 7

Solo

Detailed description: This block contains the musical notation for measures 12, 13, and 14. The Flute part (Fl.) features a melodic line with slurs and accents. The Percussion part (Perc.) has a complex, syncopated rhythm with many rests. The Electric Bass (E. Bass) plays a steady eighth-note pattern. The Organ (Org.) provides sustained chords. The Solo part has a rhythmic accompaniment of eighth notes. The FX 7 part has a few chords. The Saxophone Bass (S. Bass) has a simple bass line.



15

Fl.

Tba.

Perc.

E. Bass

Org.

S. Bass

FX 7

Solo

Detailed description: This block contains the musical notation for measures 15, 16, and 17. The Flute part (Fl.) has a melodic line with a triplet in measure 16. The Trombone (Tba.) part has a few notes. The Percussion part (Perc.) continues with its complex rhythm. The Electric Bass (E. Bass) maintains the eighth-note pattern. The Organ (Org.) has sustained chords. The Solo part has a rhythmic accompaniment. The FX 7 part has a few chords. The Saxophone Bass (S. Bass) has a simple bass line.

18

Fl. Tba. Perc. E. Bass S. Bass Solo

Detailed description: This system contains measures 18 and 19. The Flute part (Fl.) features a melodic line with eighth and sixteenth notes, including a triplet in measure 19. The Trombone part (Tba.) provides a harmonic accompaniment with chords and single notes. The Percussion part (Perc.) has a complex rhythmic pattern with various accents and dynamics. The Electric Bass (E. Bass) plays a steady eighth-note pattern. The Solo part (Solo) consists of a series of chords, some with triplets. The Saxophone Bass (S. Bass) has a sparse, melodic line with some rests.



20

Fl. Tba. Perc. E. Bass S. Bass Solo

Detailed description: This system contains measures 20 and 21. The Flute part (Fl.) continues the melodic line from the previous system, with a prominent eighth-note triplet in measure 20. The Trombone part (Tba.) continues its harmonic accompaniment. The Percussion part (Perc.) maintains its complex rhythmic pattern. The Electric Bass (E. Bass) continues with its eighth-note pattern. The Solo part (Solo) continues with its chordal accompaniment. The Saxophone Bass (S. Bass) has a melodic line with some rests.

23

Db Picc.
Fl.
Pan.
Tba.
Perc.
E. Bass
Org.
S. Bass
Solo

Detailed description: This block contains the musical score for measures 23, 24, and 25. The score is written for a large ensemble including Db Piccolo, Flute, Pan Flute, Trombone, Percussion, Electric Bass, Organ, Sub Bass, and Solo. The key signature has one flat (Bb) and the time signature is 4/4. Measure 23 features a triplet of eighth notes in the Flute and Trombone parts. Measure 24 continues the triplet in the Trombone part. Measure 25 shows a melodic line in the Piccolo and Pan Flute, and a triplet of eighth notes in the Trombone part. The Percussion part has a complex rhythmic pattern with many 'x' marks indicating specific drum hits. The Electric Bass and Solo parts play a steady eighth-note accompaniment.



26

Db Picc.
Fl.
Pan.
Tba.
Perc.
E. Bass
Org.
S. Bass
Solo

Detailed description: This block contains the musical score for measures 26, 27, and 28. The instrumentation remains the same as in the previous block. Measure 26 features a melodic line in the Piccolo and Pan Flute, and a triplet of eighth notes in the Trombone part. Measure 27 continues the triplet in the Trombone part. Measure 28 shows a melodic line in the Piccolo and Pan Flute, and a triplet of eighth notes in the Trombone part. The Percussion part has a complex rhythmic pattern with many 'x' marks indicating specific drum hits. The Electric Bass and Solo parts play a steady eighth-note accompaniment.

28

Db Picc.
Fl.
Pan.
Tba.
Perc.
E. Bass
Org.
S. Bass
Solo

Detailed description: This block contains the musical notation for measures 28 and 29. It features ten staves: Db Picc., Fl., Pan., Tba., Perc., E. Bass, Org., S. Bass, and Solo. The key signature has one flat (Bb). The Db Picc. and Fl. parts have rests in measure 28 and enter in measure 29. The Pan. part has a long note in measure 28 and a triplet in measure 29. The Tba. part has a triplet in measure 29. The Perc. part has a complex rhythmic pattern with 'x' marks. The E. Bass part has a steady eighth-note pattern. The Org. part has chords with eighth notes. The S. Bass part has a melodic line. The Solo part has chords with eighth notes.



30

Db Picc.
Fl.
Pan.
Tba.
Perc.
E. Bass
Org.
S. Bass
Solo

Detailed description: This block contains the musical notation for measures 30 and 31. It features the same ten staves as the previous block. The key signature remains one flat. The Db Picc. and Fl. parts have rests in measure 30 and enter in measure 31. The Pan. part has a triplet in measure 31. The Tba. part has a triplet in measure 31. The Perc. part continues its rhythmic pattern. The E. Bass part continues its eighth-note pattern. The Org. part continues its chordal accompaniment. The S. Bass part has a melodic line. The Solo part continues its chordal accompaniment.

32

Db Picc.

Fl.

Tba.

Perc.

E. Bass

Org.

S. Bass

Solo

Detailed description: This system of music covers measures 32, 33, and 34. The Db Piccolo part has a few notes in measure 32. The Flute part has a melodic line with some grace notes. The Trombone part has a rhythmic pattern. The Percussion part features a complex rhythmic pattern with many notes. The Electric Bass part has a steady eighth-note pattern. The Organ part has block chords. The Solo part has a rhythmic pattern with chords.



35

Fl.

Tba.

Perc.

E. Bass

Org.

S. Bass

Solo

Detailed description: This system of music covers measures 35, 36, and 37. The Flute part has a melodic line with a triplet in measure 35. The Trombone part has a rhythmic pattern. The Percussion part features a complex rhythmic pattern with a triplet in measure 35. The Electric Bass part has a steady eighth-note pattern. The Organ part has block chords. The Solo part has a rhythmic pattern with chords.

38

Fl.

Perc.

E. Bass

Org.

S. Bass

Solo

Detailed description: This system contains measures 38, 39, and 40. The Flute part (Fl.) has a melodic line with a triplet of eighth notes in measure 40. The Percussion part (Perc.) features a complex rhythmic pattern with many beamed notes and rests. The E. Bass part (E. Bass) has a steady eighth-note accompaniment. The Organ part (Org.) consists of sustained chords. The S. Bass part (S. Bass) has a sparse melodic line. The Solo part (Solo) has a rhythmic accompaniment of eighth notes.



41

Db Picc.

Fl.

Pan.

Tba.

Perc.

E. Bass

Org.

S. Bass

Solo

Detailed description: This system contains measures 41, 42, and 43. The Db Picc. part (Db Picc.) has a melodic line starting in measure 42. The Flute part (Fl.) has a melodic line starting in measure 42. The Pan. part (Pan.) has a melodic line with a long note in measure 42. The Tba. part (Tba.) has a melodic line with a long note in measure 42. The Percussion part (Perc.) features a complex rhythmic pattern. The E. Bass part (E. Bass) has a steady eighth-note accompaniment. The Organ part (Org.) consists of sustained chords. The S. Bass part (S. Bass) has a sparse melodic line. The Solo part (Solo) has a rhythmic accompaniment of eighth notes.

43

D \flat Picc.
Fl.
Pan.
Tba.
Perc.
E. Bass
Org.
S. Bass
Solo

This musical score block covers measures 43 and 44. It features ten staves: D \flat Piccolo, Flute, Pan Flute, Trombone, Percussion, Electric Bass, Organ, Solo Bass, and Solo. The key signature has two sharps (F# and C#), and the time signature is 4/4. In measure 43, the Trombone part has a triplet of eighth notes. The Percussion part features a complex rhythmic pattern with many rests. The Organ and Solo parts play a steady eighth-note accompaniment. A double bar line is present at the end of measure 44.

45

D \flat Picc.
Fl.
Pan.
Tba.
Perc.
E. Bass
Org.
S. Bass
Solo

This musical score block covers measures 45 and 46. It features the same ten staves as the previous block. The key signature and time signature remain the same. In measure 45, the Trombone part has a triplet of eighth notes. The Percussion part continues with its complex rhythmic pattern. The Organ and Solo parts maintain their eighth-note accompaniment. A double bar line is present at the end of measure 46.

47

Db Picc.
Fl.
Pan.
Tba.
Perc.
E. Bass
Org.
S. Bass
Solo

Detailed description: This block contains the musical notation for measures 47 and 48. It features ten staves: Db Picc., Fl., Pan., Tba., Perc., E. Bass, Org., S. Bass, and Solo. The key signature has two sharps (F# and C#). The time signature is 4/4. In measure 47, the Piccolo and Flute play eighth-note patterns. The Pan flute has a triplet of eighth notes. The Trombone has a triplet of eighth notes. The Percussion part has a complex rhythmic pattern with accents. The Electric Bass, Organ, and Solo parts play chords with eighth-note rhythms. The Saxophone Bass part has a melodic line. Measure 48 continues these patterns with some changes in dynamics and articulation.



49

Db Picc.
Fl.
Pan.
Tba.
Perc.
E. Bass
Org.
S. Bass
Solo

Detailed description: This block contains the musical notation for measures 49 and 50. It features the same ten staves as the previous block. The key signature remains two sharps. In measure 49, the Piccolo and Flute continue their eighth-note patterns. The Pan flute has a triplet. The Trombone has a triplet. The Percussion part has a complex rhythmic pattern. The Electric Bass, Organ, and Solo parts play chords with eighth-note rhythms. The Saxophone Bass part has a melodic line. Measure 50 continues these patterns with some changes in dynamics and articulation.

51

Db Picc.
Fl.
Pan.
Tba.
Perc.
E. Bass
Org.
S. Bass
Solo

Detailed description: This system of musical notation covers measures 51 and 52. It features ten staves: Db Piccolo, Flute, Pan Flute, Trombone, Percussion, Electric Bass, Organ, Sub Bass, and Solo. The key signature has two sharps (F# and C#). The time signature is 4/4. In measure 51, the Piccolo and Flute parts have rests, while the Pan Flute, Trombone, and Solo parts play eighth-note patterns. The Percussion part has a complex rhythmic pattern with accents. In measure 52, the Piccolo and Flute parts play eighth-note patterns, while the Pan Flute, Trombone, and Solo parts continue their patterns. The Percussion part has a similar pattern to measure 51. A double bar line is present at the end of measure 52.

53

Db Picc.
Fl.
Pan.
Tba.
Perc.
E. Bass
Org.
S. Bass
Solo

Detailed description: This system of musical notation covers measures 53 and 54. It features the same ten staves as the previous system. The key signature remains two sharps. In measure 53, the Piccolo and Flute parts have rests, while the Pan Flute, Trombone, and Solo parts play eighth-note patterns. The Percussion part has a complex rhythmic pattern with accents. In measure 54, the Piccolo and Flute parts play eighth-note patterns, while the Pan Flute, Trombone, and Solo parts continue their patterns. The Percussion part has a similar pattern to measure 53. A double bar line is present at the end of measure 54.

55

Db Picc.
Fl.
Pan.
Tba.
Perc.
E. Bass
Org.
S. Bass
Solo

Detailed description: This block contains the musical notation for measures 55 and 56. It features ten staves: Db Piccolo, Flute, Pan Flute, Trombone, Percussion, Electric Bass, Organ, Saxophone Bass, and Solo. Measure 55 includes a triplet of eighth notes in the Pan Flute and Trombone parts. Measure 56 features a long melodic line in the Pan Flute and a triplet of eighth notes in the Trombone part.



57

Db Picc.
Fl.
Pan.
Tba.
Perc.
E. Bass
Org.
S. Bass
Solo

Detailed description: This block contains the musical notation for measures 57, 58, and 59. It features the same ten staves as the previous block. Measure 57 has a triplet of eighth notes in the Pan Flute and Trombone parts. Measure 58 features a long melodic line in the Pan Flute and a triplet of eighth notes in the Trombone part. Measure 59 has a long melodic line in the Pan Flute and a triplet of eighth notes in the Trombone part.

60

Db Picc.
Fl.
Pan.
Perc.

This musical system covers measures 60 to 62. It features four staves: Db Piccolo (treble clef), Flute (treble clef), Pan Flute (treble clef), and Percussion (percussion clef). The key signature has two flats. The percussion part has a steady eighth-note pattern with 'x' marks. The woodwinds have melodic lines with various articulations and rests.



63

Db Picc.
Fl.
Pan.
Tba.
Perc.
E. Bass
Org.
S. Bass
Solo

This musical system covers measures 63 to 65. It features eight staves: Db Piccolo (treble clef), Flute (treble clef), Pan Flute (treble clef), Trombone (bass clef), Percussion (percussion clef), Electric Bass (bass clef), Organ (treble clef), and Solo (treble clef). The key signature has two flats. The percussion part continues with its eighth-note pattern. The organ and solo parts have block chords. The electric bass has a simple line. The woodwinds have melodic lines with articulations.

66

Db Picc.
Fl.
Pan.
Tba.
Perc.
E. Bass
Org.
S. Bass
Solo

Detailed description: This system of music covers measures 66 and 67. It features nine staves: Db Piccolo, Flute, Pan Flute, Trombone, Percussion, Electric Bass, Organ, Sub Bass, and Solo. The key signature has one flat (Bb). The time signature is 4/4. In measure 66, the Piccolo and Flute play a melodic line, while the Trombone has a complex, multi-measure rest. The Percussion part features a complex rhythmic pattern with many rests. The Electric Bass, Organ, Sub Bass, and Solo parts provide harmonic support with various rhythmic patterns. In measure 67, the Piccolo and Flute continue their melodic line. The Trombone part includes a triplet of eighth notes. The Percussion part continues with its complex pattern. The Electric Bass, Organ, Sub Bass, and Solo parts maintain their harmonic roles.



68

Db Picc.
Fl.
Pan.
Tba.
Perc.
E. Bass
Org.
S. Bass
Solo

Detailed description: This system of music covers measures 68 and 69. It features the same nine staves as the previous system. In measure 68, the Piccolo and Flute play a melodic line. The Trombone part includes a triplet of eighth notes. The Percussion part continues with its complex pattern. The Electric Bass, Organ, Sub Bass, and Solo parts maintain their harmonic roles. In measure 69, the Piccolo and Flute continue their melodic line. The Trombone part includes a triplet of eighth notes. The Percussion part continues with its complex pattern. The Electric Bass, Organ, Sub Bass, and Solo parts maintain their harmonic roles.

70

Db Picc.
Fl.
Pan.
Tba.
Perc.
E. Bass
Org.
S. Bass
Solo

Detailed description: This block contains the musical score for measures 70 and 71. It features ten staves: Db Picc., Fl., Pan., Tba., Perc., E. Bass, Org., S. Bass, and Solo. The key signature has one flat (Bb) and the time signature is 4/4. The Piccolo and Flute parts have rests in measure 70 and enter in measure 71. The Pan flute part has a melodic line in measure 70 and a triplet in measure 71. The Trombone part has a melodic line in measure 70 and a triplet in measure 71. The Percussion part has a complex rhythmic pattern with accents. The Electric Bass part has a steady eighth-note pattern. The Organ part has a block-chord accompaniment. The Solo part has a block-chord accompaniment. The S. Bass part has a melodic line in measure 70 and a triplet in measure 71.



72

Db Picc.
Fl.
Pan.
Tba.
Perc.
E. Bass
Org.
S. Bass
Solo

Detailed description: This block contains the musical score for measures 72 and 73. It features ten staves: Db Picc., Fl., Pan., Tba., Perc., E. Bass, Org., S. Bass, and Solo. The key signature has one flat (Bb) and the time signature is 4/4. The Piccolo and Flute parts have rests in measure 72 and enter in measure 73. The Pan flute part has a melodic line in measure 72 and a triplet in measure 73. The Trombone part has a melodic line in measure 72 and a triplet in measure 73. The Percussion part has a complex rhythmic pattern with accents. The Electric Bass part has a steady eighth-note pattern. The Organ part has a block-chord accompaniment. The Solo part has a block-chord accompaniment. The S. Bass part has a melodic line in measure 72 and a triplet in measure 73.

74

Db Picc.
Fl.
Pan.
Tba.
Perc.
E. Bass
Org.
S. Bass
Solo

Detailed description: This block contains the musical score for measures 74 and 75. It features nine staves: Db Piccolo, Flute, Pan Flute, Trombone, Percussion, Electric Bass, Organ, Sub Bass, and Solo. The key signature has one flat (Bb) and the time signature is 4/4. In measure 74, the Piccolo and Flute play a melodic line, while the Trombone and Percussion play a rhythmic accompaniment. The Electric Bass and Solo parts provide a steady bass line. In measure 75, the Piccolo and Flute continue their melodic line, and the Trombone plays a triplet of eighth notes. The Percussion part features a complex rhythmic pattern with various drum sounds indicated by 'x' marks. The Electric Bass and Solo parts continue their bass line.



76

Db Picc.
Fl.
Pan.
Tba.
Perc.
E. Bass
Org.
S. Bass
Solo

Detailed description: This block contains the musical score for measures 76 and 77. It features the same nine staves as the previous block. In measure 76, the Piccolo and Flute play a melodic line, and the Trombone plays a rhythmic accompaniment. The Electric Bass and Solo parts provide a steady bass line. In measure 77, the Piccolo and Flute continue their melodic line, and the Trombone plays a triplet of eighth notes. The Percussion part features a complex rhythmic pattern with various drum sounds indicated by 'x' marks. The Electric Bass and Solo parts continue their bass line.

78

Db Picc.
Fl.
Pan.
Tba.
Perc.
E. Bass
Org.
S. Bass
Solo

Detailed description: This block contains the musical notation for measures 78 and 79. The score is arranged in a grand staff with nine staves. The instruments are: Db Piccolo (treble clef), Flute (treble clef), Pan flute (treble clef), Trombone (bass clef), Percussion (percussion clef), Electric Bass (bass clef), Organ (treble clef), Solo Bass (bass clef), and Solo (treble clef). The key signature has one flat (Bb). Measure 78 shows the Piccolo and Flute playing a melodic line, while the Trombone and Percussion have more complex rhythmic patterns. Measure 79 features a triplet in the Pan flute and Trombone parts. The Solo part consists of a series of chords.



80

Db Picc.
Fl.
Pan.
Tba.
Perc.
E. Bass
Org.
S. Bass
Solo

Detailed description: This block contains the musical notation for measures 80, 81, and 82. The instrumentation remains the same as in the previous block. Measure 80 continues the melodic lines for Piccolo and Flute. Measure 81 shows a change in the Percussion part with a sustained chord. Measure 82 concludes the section with a final chord in the Percussion and Solo parts. The Solo part continues with a sequence of chords.

Vengaboys - We're Going To Ibiza

Piccolo in D \flat

$\text{♩} = 105,001572$

24

28

32

8

43

47

51

55

59

63

67

V.S.

Piccolo in D \flat

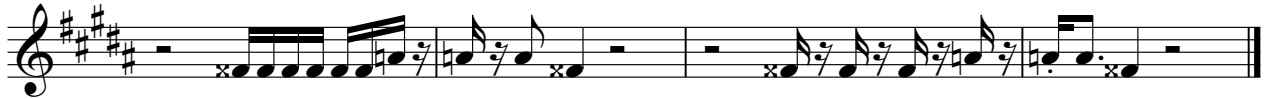
71



75



79



Vengaboys - We're Going To Ibiza

Flute

♩ = 105,001572

8

12

16

20

24

29

33

37

41

45

V.S.

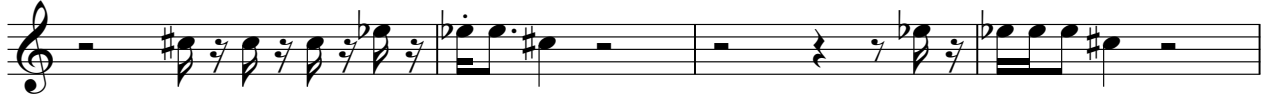
49



53



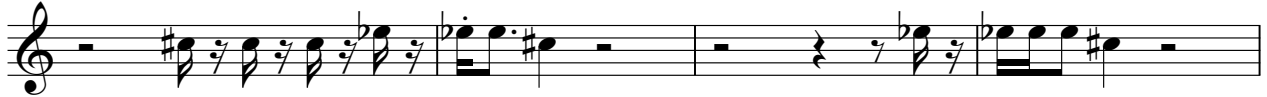
57



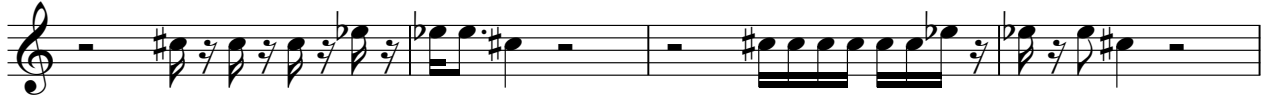
61



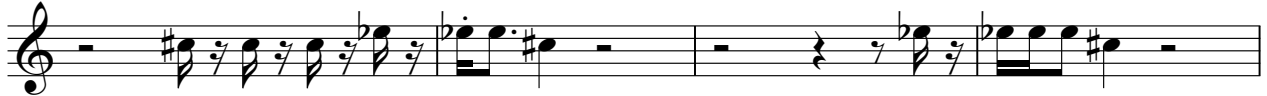
65



69



73



77



80



Panpipes

Vengaboys - We're Going To Ibiza

♩ = 105,001572

24

29

3

9

43

3

49

55

3

61

3

67

3

73

78

3

Detailed description: The image shows a musical score for a Panpipes instrument. It is written in 4/4 time with a tempo of 105,001572. The score consists of nine staves of music. The first staff starts with a measure of 24, followed by a measure with a rest, and then a measure with a dotted eighth note and a sixteenth note. The second staff starts with a measure of 29, followed by a measure with a rest, a triplet of eighth notes, a measure of 9, and then a measure with a dotted eighth note and a sixteenth note. The third staff starts with a measure of 43, followed by a measure with a rest, a measure with a dotted eighth note and a sixteenth note, and then a triplet of eighth notes. The fourth staff starts with a measure of 49, followed by a measure with a rest, a measure with a dotted eighth note and a sixteenth note, and then a measure with a dotted eighth note and a sixteenth note. The fifth staff starts with a measure of 55, followed by a measure with a rest, a measure with a dotted eighth note and a sixteenth note, and then a triplet of eighth notes. The sixth staff starts with a measure of 61, followed by a measure with a rest, a measure with a dotted eighth note and a sixteenth note, and then a triplet of eighth notes. The seventh staff starts with a measure of 67, followed by a measure with a rest, a measure with a dotted eighth note and a sixteenth note, and then a triplet of eighth notes. The eighth staff starts with a measure of 73, followed by a measure with a rest, a measure with a dotted eighth note and a sixteenth note, and then a measure with a dotted eighth note and a sixteenth note. The ninth staff starts with a measure of 78, followed by a measure with a rest, a triplet of eighth notes, and then a measure with a dotted eighth note and a sixteenth note.

Vengaboys - We're Going To Ibiza

Tuba

♩ = 105,001572

4

7

17

21

25

28

31

34

41

44

47

50

53

56

66

69

72

75

7

78

Tuba

3

Detailed description: This musical notation is for measure 78. It is written on a bass clef staff. The first part of the measure consists of a melodic line with a slur over the first two notes, followed by a triplet of eighth notes. The second part of the measure is a 3-measure rest, indicated by a bracket with the number '3' underneath. The measure ends with a double bar line.

80

Detailed description: This musical notation is for measure 80. It is written on a bass clef staff. The first part of the measure consists of a melodic line with a slur over the first two notes, followed by a triplet of eighth notes. The second part of the measure is a 3-measure rest, indicated by a bracket with the number '3' underneath. The measure ends with a double bar line.

Vengaboys - We're Going To Ibiza

Percussion

♩ = 105,001572

3

5

7

10

13

16

19

22

25

V.S.

2

28 Percussion

31

35 3

39

42

45

48

51

54

57

This image shows a guitar score for a percussive piece, spanning measures 28 to 57. The score is written on a single staff with a treble clef and a key signature of one flat. The music is characterized by a rhythmic pattern of eighth notes, often with an 'x' above the notehead, indicating a percussive effect. The score is divided into systems of three measures each. Measure numbers 28, 31, 35, 39, 42, 45, 48, 51, 54, and 57 are indicated at the beginning of their respective systems. A 'Percussion' label is placed above the first system. A '3' is placed above the first measure of the third system. Above the staff, there are several instances of a musical notation consisting of a note with a vertical line through it, a star, and a circled 'x', all connected by a horizontal line with a downward-pointing arrow, indicating a specific percussive technique. The guitar body is represented by a diamond shape at the start of each system.

60

63

66

69

72

75

78

80

Vengaboys - We're Going To Ibiza

Fretless Electric Bass

♩ = 105,001572

The image displays a bass guitar tablature for the song 'We're Going To Ibiza' by Vengaboys. The music is written for a fretless electric bass in 4/4 time, with a tempo of 105,001572. The key signature is B-flat major, indicated by one flat (B-flat) on the staff. The piece is divided into ten systems, each containing three measures. The first system starts at measure 1. The second system starts at measure 4. The third system starts at measure 7. The fourth system starts at measure 10. The fifth system starts at measure 13. The sixth system starts at measure 16. The seventh system starts at measure 19. The eighth system starts at measure 22. The ninth system starts at measure 25. The tenth system starts at measure 28. The tablature uses standard notation with a bass clef, a key signature of one flat, and a 4/4 time signature. The notes are represented by stems with flags, and the fretless nature of the instrument is indicated by the absence of fret numbers. The piece concludes with a double bar line at the end of the tenth system.

V.S.

2
31
34
37
40
43
46
49
52
55
58

Fretless Electric Bass

67 **Fretless Electric Bass** 3

70

73

76

79

Vengaboys - We're Going To Ibiza

Organ

♩ = 105,001572

12

17

26

29

31

34

41

43

45

47

V.S.

49



51



53



55



58



67



69



71



73



75



77



79



Vengaboys - We're Going To Ibiza

Synth Bass

♩ = 105,001572



37



41



45



48



52



55



65



69



72



76



79



FX 7 (Echoes)

Vengaboys - We're Going To Ibiza

♩ = 105,001572

8

12

15

66

22



24



26



28



30



32



34



37



39



41



43



45



47



49



51



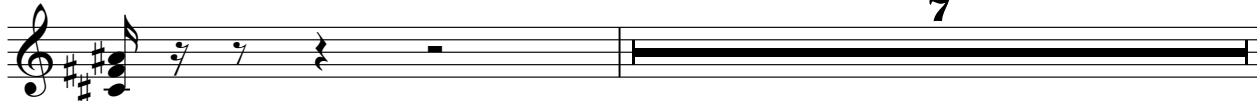
53



55



57



7

65

Musical staff for measure 65, featuring a treble clef, a key signature of one flat (B-flat), and a 4/4 time signature. The staff contains a sequence of chords and eighth notes: B-flat major (B-flat, D, F), C minor (C, E-flat, G), D minor (D, F, A-flat), E-flat major (E-flat, G, B-flat), F major (F, A, C), G major (G, B, D), A-flat major (A-flat, C, E-flat), and B-flat major (B-flat, D, F). The notes are beamed together in groups of two.

68

Musical staff for measure 68, featuring a treble clef, a key signature of one flat (B-flat), and a 4/4 time signature. The staff contains a sequence of chords and eighth notes: B-flat major (B-flat, D, F), C minor (C, E-flat, G), D minor (D, F, A-flat), E-flat major (E-flat, G, B-flat), F major (F, A, C), G major (G, B, D), A-flat major (A-flat, C, E-flat), and B-flat major (B-flat, D, F). The notes are beamed together in groups of two.

70

Musical staff for measure 70, featuring a treble clef, a key signature of one flat (B-flat), and a 4/4 time signature. The staff contains a sequence of chords and eighth notes: B-flat major (B-flat, D, F), C minor (C, E-flat, G), D minor (D, F, A-flat), E-flat major (E-flat, G, B-flat), F major (F, A, C), G major (G, B, D), A-flat major (A-flat, C, E-flat), and B-flat major (B-flat, D, F). The notes are beamed together in groups of two.

72

Musical staff for measure 72, featuring a treble clef, a key signature of one flat (B-flat), and a 4/4 time signature. The staff contains a sequence of chords and eighth notes: B-flat major (B-flat, D, F), C minor (C, E-flat, G), D minor (D, F, A-flat), E-flat major (E-flat, G, B-flat), F major (F, A, C), G major (G, B, D), A-flat major (A-flat, C, E-flat), and B-flat major (B-flat, D, F). The notes are beamed together in groups of two.

74

Musical staff for measure 74, featuring a treble clef, a key signature of one flat (B-flat), and a 4/4 time signature. The staff contains a sequence of chords and eighth notes: B-flat major (B-flat, D, F), C minor (C, E-flat, G), D minor (D, F, A-flat), E-flat major (E-flat, G, B-flat), F major (F, A, C), G major (G, B, D), A-flat major (A-flat, C, E-flat), and B-flat major (B-flat, D, F). The notes are beamed together in groups of two.

76

Musical staff for measure 76, featuring a treble clef, a key signature of one flat (B-flat), and a 4/4 time signature. The staff contains a sequence of chords and eighth notes: B-flat major (B-flat, D, F), C minor (C, E-flat, G), D minor (D, F, A-flat), E-flat major (E-flat, G, B-flat), F major (F, A, C), G major (G, B, D), A-flat major (A-flat, C, E-flat), and B-flat major (B-flat, D, F). The notes are beamed together in groups of two.

78

Musical staff for measure 78, featuring a treble clef, a key signature of one flat (B-flat), and a 4/4 time signature. The staff contains a sequence of chords and eighth notes: B-flat major (B-flat, D, F), C minor (C, E-flat, G), D minor (D, F, A-flat), E-flat major (E-flat, G, B-flat), F major (F, A, C), G major (G, B, D), A-flat major (A-flat, C, E-flat), and B-flat major (B-flat, D, F). The notes are beamed together in groups of two.

80

Musical staff for measure 80, featuring a treble clef, a key signature of one flat (B-flat), and a 4/4 time signature. The staff contains a sequence of chords and eighth notes: B-flat major (B-flat, D, F), C minor (C, E-flat, G), D minor (D, F, A-flat), E-flat major (E-flat, G, B-flat), F major (F, A, C), G major (G, B, D), A-flat major (A-flat, C, E-flat), and B-flat major (B-flat, D, F). The notes are beamed together in groups of two. The measure concludes with a double bar line.