

Tina Turner - The Best 2

♩ = 107,002419

Flute

Alto Saxophone

Percussion

Jazz Guitar

Electric Guitar

5-string Electric Bass

Fretless Electric Bass

Synth Bass

Synth Bass

Pad 1 (New Age)

FX 1 (Rain)

FX 4 (Atmosphere)

FX 5 (Brightness)

6

Fl.

Perc.

S. Bass

S. Bass

Pad 1

FX 5

♩ = 107,002419

10

Fl.  
Perc.  
S. Bass  
S. Bass  
Pad 1  
FX 5



14

Fl.  
Perc.  
S. Bass  
S. Bass  
Pad 1  
FX 1  
FX 4

18

Fl.

Perc.

J. Gtr.

S. Bass

S. Bass

Pad 1

FX 1

FX 4

FX 5



22

Fl.

Perc.

J. Gtr.

S. Bass

S. Bass

Pad 1

FX 5

26

Fl.

Perc.

J. Gtr.

S. Bass

S. Bass

Pad 1

FX 1

FX 4

Detailed description: This block contains the musical notation for measures 26 through 29. The Flute part (Fl.) has a melodic line with some rests. The Percussion part (Perc.) features a steady rhythmic pattern of eighth notes. The J. Gtr. (Jazz Guitar) part is mostly silent. The S. Bass (Soprano Bass) part has a simple bass line. The second S. Bass part has a dense, rhythmic accompaniment. The Pad 1 part provides harmonic support with sustained chords. The FX 1 (Effects 1) part has a complex, layered texture. The FX 4 (Effects 4) part has a melodic line with some rests.



30

Fl.

Perc.

J. Gtr.

E. Bass

E. Bass

S. Bass

S. Bass

Pad 1

FX 1

FX 4

Detailed description: This block contains the musical notation for measures 30 through 33. The Flute part (Fl.) has a melodic line with some rests. The Percussion part (Perc.) features a steady rhythmic pattern of eighth notes. The J. Gtr. (Jazz Guitar) part has a complex, layered texture. The E. Bass (Electric Bass) part has a simple bass line. The second E. Bass part has a dense, rhythmic accompaniment. The S. Bass (Soprano Bass) part has a simple bass line. The second S. Bass part has a dense, rhythmic accompaniment. The Pad 1 part provides harmonic support with sustained chords. The FX 1 (Effects 1) part has a complex, layered texture. The FX 4 (Effects 4) part has a melodic line with some rests.

33

Fl. Perc. J. Gtr. E. Bass E. Bass S. Bass FX 4

This musical system covers measures 33, 34, and 35. The Flute part begins with a melodic line in measure 33, followed by rests in 34 and 35. The Percussion part provides a steady rhythmic accompaniment. The J. Gtr. part features a complex, fast-paced rhythmic pattern. The E. Bass part has a similar fast-paced pattern, while the other E. Bass and S. Bass parts provide harmonic support. The FX 4 part includes sustained chords.



36

Fl. Perc. J. Gtr. E. Bass E. Bass S. Bass FX 4

This musical system covers measures 36, 37, and 38. The Flute part has a melodic line in 36, a triplet in 37, and a melodic line in 38. The Percussion part continues its rhythmic accompaniment. The J. Gtr. part maintains its fast-paced pattern. The E. Bass part has a similar fast-paced pattern, while the other E. Bass and S. Bass parts provide harmonic support. The FX 4 part includes sustained chords.

39

Fl.

Perc.

J. Gtr.

E. Bass

E. Bass

S. Bass

FX 4

Detailed description: This musical system covers measures 39, 40, and 41. The Flute part (Fl.) has a melodic line with some rests. The Percussion part (Perc.) consists of a steady eighth-note pattern. The J. Gtr. (Jazz Guitar) part features a complex, rhythmic eighth-note pattern. The E. Bass (Electric Bass) part has a similar eighth-note pattern. The S. Bass (Soprano Bass) part plays a consistent eighth-note accompaniment. The FX 4 (Effects) part provides harmonic support with chords and effects.



42

Fl.

Perc.

J. Gtr.

E. Bass

E. Bass

S. Bass

FX 4

Detailed description: This musical system covers measures 42, 43, and 44. The Flute part (Fl.) continues its melodic line. The Percussion part (Perc.) maintains the eighth-note pattern. The J. Gtr. (Jazz Guitar) part continues with its complex eighth-note pattern. The E. Bass (Electric Bass) part continues with its eighth-note pattern. The S. Bass (Soprano Bass) part continues with its eighth-note accompaniment. The FX 4 (Effects) part continues with harmonic support.

45

Fl.

Perc.

J. Gtr.

E. Gtr.

E. Bass

E. Bass

S. Bass

S. Bass

FX 4

FX 5



48

Fl.

Perc.

J. Gtr.

S. Bass

S. Bass

Pad 1

FX 5

52

Fl.

Perc.

J. Gtr.

S. Bass

S. Bass

Pad 1

FX 1

FX 4

FX 5

Detailed description: This system contains measures 52 through 55. The Flute part features a melodic line with eighth and sixteenth notes. The Percussion part provides a steady rhythmic accompaniment. The J. Gtr. part plays a consistent eighth-note pattern. The S. Bass part has a simple bass line. The second S. Bass part is a complex, fast-moving line. Pad 1 provides harmonic support with sustained chords. FX 1, FX 4, and FX 5 are used for atmospheric effects, with FX 5 having a specific symbol at the end of the system.



56

Fl.

Perc.

S. Bass

S. Bass

Pad 1

FX 1

FX 4

Detailed description: This system contains measures 56 through 59. The Flute part continues its melodic development. The Percussion part remains consistent. The J. Gtr. part is not present in this system. The S. Bass part has a simple bass line. The second S. Bass part is a complex, fast-moving line. Pad 1 provides harmonic support with sustained chords. FX 1 and FX 4 are used for atmospheric effects, with FX 1 having a specific symbol at the end of the system.



59

Fl.

Perc.

J. Gtr.

E. Bass

E. Bass

S. Bass

FX 4

Detailed description: This musical system covers measures 59, 60, and 61. The Flute part (Fl.) starts with a whole rest in measure 59, then plays a melodic line in measures 60 and 61. The Percussion part (Perc.) provides a steady rhythmic accompaniment with eighth notes. The J. Gtr. (Jazz Guitar) part features a complex, rhythmic pattern of eighth notes. The E. Bass (Electric Bass) part has a similar rhythmic pattern. The S. Bass (Soprano Bass) part plays a consistent eighth-note rhythm. The FX 4 (Effects) part provides harmonic support with chords and sustained notes.



62

Fl.

Perc.

J. Gtr.

E. Bass

E. Bass

S. Bass

FX 4

Detailed description: This musical system covers measures 62, 63, and 64. The Flute part (Fl.) plays a melodic line in measure 62, followed by a whole rest in measure 63, and then resumes in measure 64. The Percussion part (Perc.) continues with its rhythmic accompaniment. The J. Gtr. (Jazz Guitar) part maintains its complex eighth-note pattern. The E. Bass (Electric Bass) part has a more varied rhythmic pattern with some slurs. The S. Bass (Soprano Bass) part plays a consistent eighth-note rhythm. The FX 4 (Effects) part provides harmonic support with chords and sustained notes.

65

Fl. Perc. J. Gtr. E. Bass E. Bass S. Bass FX 4

This musical score covers measures 65 to 67. It features seven staves: Flute (Fl.), Percussion (Perc.), Jazz Guitar (J. Gtr.), Electric Bass (E. Bass), another Electric Bass (E. Bass), Saxophone Bass (S. Bass), and FX 4. Measure 65 includes a triplet of eighth notes in the flute part. The percussion part consists of a steady eighth-note pattern. The guitar and bass parts feature complex rhythmic patterns with many slurs and ties. The FX 4 part has sustained chords.



68

Fl. Perc. J. Gtr. E. Bass E. Bass S. Bass FX 4

This musical score covers measures 68 to 70. It features the same seven staves as the previous section. Measure 68 begins with a rest for the flute. The percussion continues with its eighth-note pattern. The guitar and bass parts maintain their complex rhythmic textures. The FX 4 part continues with sustained chords.

71

Fl. Perc. J. Gtr. E. Bass E. Bass S. Bass FX 4

This musical system covers measures 71 to 73. It features a Flute (Fl.) part with melodic lines and rests. The Percussion (Perc.) part consists of a steady eighth-note rhythm. The J. Gtr. (Jazz Guitar) part plays a complex, rhythmic pattern. The E. Bass (Electric Bass) part has a driving eighth-note line. The S. Bass (Soprano Bass) part provides a low-frequency accompaniment. The FX 4 (Effects 4) part includes sustained chords and effects.



74

Fl. Perc. J. Gtr. E. Gtr. E. Bass E. Bass S. Bass Pad 1 FX 4

This musical system covers measures 74 to 76. The Fl. (Flute) part continues with melodic phrases. The Perc. (Percussion) part maintains its rhythmic pattern. The J. Gtr. (Jazz Guitar) part has a more active role in measure 74. The E. Gtr. (Electric Guitar) part plays a complex, rhythmic pattern. The E. Bass (Electric Bass) part has a driving eighth-note line. The S. Bass (Soprano Bass) part provides a low-frequency accompaniment. The Pad 1 (Pad) part includes sustained chords and effects. The FX 4 (Effects 4) part includes sustained chords and effects.

78

Fl. Perc. E. Gtr. E. Bass S. Bass Pad 1

This system contains measures 78 through 81. The Flute part begins with a triplet of eighth notes. The Percussion part features a steady eighth-note pattern. The Electric Guitar part has a complex, fast-moving line with many triplets. The Electric Bass part has a melodic line with some rests. The Saxophone part has a simple melodic line. The Pad 1 part provides harmonic support with sustained chords. The system ends with a double bar line.



82

Fl. Alto Sax. Perc. E. Gtr. E. Bass S. Bass Pad 1 FX 4

This system contains measures 82 through 84. The Flute part has a melodic line with a triplet. The Alto Saxophone part has a melodic line with a triplet. The Percussion part continues with its eighth-note pattern. The Electric Guitar part has a melodic line with a triplet. The Electric Bass part has a melodic line. The Saxophone part has a melodic line. The Pad 1 part provides harmonic support. The FX 4 part has a melodic line. The system ends with a double bar line.




85

Alto Sax. Perc. S. Bass Pad 1 FX 4

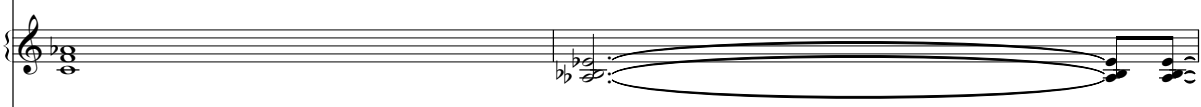
This system contains measures 85 through 87. The Alto Saxophone part has a melodic line with a triplet. The Percussion part continues with its eighth-note pattern. The Saxophone part has a melodic line. The Pad 1 part provides harmonic support. The FX 4 part has a melodic line. The system ends with a double bar line.


88

Alto Sax. 

Perc. 

S. Bass 

Pad 1 

FX 4 



90

Fl. 

Alto Sax. 

Perc. 

J. Gtr. 

E. Gtr. 

E. Bass 

E. Bass 

S. Bass 

S. Bass 

Pad 1 

FX 4 

93

Fl. Perc. J. Gtr. E. Gtr. E. Bass E. Bass S. Bass S. Bass

Detailed description: This musical score block covers measures 93 to 95. It features eight staves: Flute (Fl.), Percussion (Perc.), and two parts of Electric Guitar (J. Gtr. and E. Gtr.). The bottom four staves are for Electric Bass (E. Bass), two parts of Sub Bass (S. Bass), and another part of Sub Bass (S. Bass). The music is in a key with one sharp (F#) and a 4/4 time signature. The flute part has a melodic line with some rests. The percussion part has a steady eighth-note pattern. The guitar parts feature chords and some melodic fragments. The bass parts are more rhythmic and melodic.



96

Fl. Perc. J. Gtr. E. Gtr. E. Bass E. Bass S. Bass S. Bass FX 4

Detailed description: This musical score block covers measures 96 to 98. It features nine staves: Flute (Fl.), Percussion (Perc.), and two parts of Electric Guitar (J. Gtr. and E. Gtr.). The bottom five staves are for Electric Bass (E. Bass), two parts of Sub Bass (S. Bass), and another part of Sub Bass (S. Bass). A new staff, FX 4, is added at the bottom. The music continues in the same key and time signature. The flute part has a melodic line with a triplet in measure 97. The percussion part has a steady eighth-note pattern. The guitar parts feature chords and some melodic fragments. The bass parts are more rhythmic and melodic. The FX 4 part has a melodic line.

99

Fl. Perc. J. Gtr. E. Gtr. E. Bass E. Bass S. Bass S. Bass

Detailed description: This block contains the musical notation for measures 99, 100, and 101. The score is arranged in a grand staff with eight staves. The Flute (Fl.) staff has a treble clef and contains melodic lines with rests and notes. The Percussion (Perc.) staff has a double bar line and contains a rhythmic pattern of eighth notes. The J. Gtr. (Jazz Guitar) staff has a treble clef and contains a series of chords. The E. Gtr. (Electric Guitar) staff has a treble clef and contains chords with some notes. The E. Bass (Electric Bass) staff has a bass clef and contains a complex rhythmic pattern of eighth notes. The second E. Bass staff has a bass clef and contains a similar rhythmic pattern. The S. Bass (Soprano Bass) staff has a bass clef and contains a simple melodic line. The second S. Bass staff has a bass clef and contains a rhythmic pattern of eighth notes.



102

Fl. Perc. J. Gtr. E. Gtr. E. Bass E. Bass S. Bass S. Bass

Detailed description: This block contains the musical notation for measures 102, 103, and 104. The score is arranged in a grand staff with eight staves. The Flute (Fl.) staff has a treble clef and contains melodic lines with rests and notes. The Percussion (Perc.) staff has a double bar line and contains a rhythmic pattern of eighth notes. The J. Gtr. (Jazz Guitar) staff has a treble clef and contains a series of chords. The E. Gtr. (Electric Guitar) staff has a treble clef and contains chords with some notes. The E. Bass (Electric Bass) staff has a bass clef and contains a complex rhythmic pattern of eighth notes. The second E. Bass staff has a bass clef and contains a similar rhythmic pattern. The S. Bass (Soprano Bass) staff has a bass clef and contains a simple melodic line. The second S. Bass staff has a bass clef and contains a rhythmic pattern of eighth notes.

105

Fl.

Alto Sax.

Perc.

J. Gtr.

E. Gtr.

E. Bass

E. Bass

S. Bass

S. Bass

Pad 1

FX 1

FX 4

FX 5



108

Fl.

Alto Sax.

Perc.

J. Gtr.

E. Gtr.

E. Bass

E. Bass

S. Bass

S. Bass

Pad 1

FX 1

FX 4

FX 5

111

Fl.

Alto Sax.

Perc.

J. Gtr.

E. Gtr.

E. Bass

E. Bass

S. Bass

S. Bass

Pad 1

FX 1

FX 4

FX 5

113

Fl.

Alto Sax.

Perc.

J. Gtr.

E. Gtr.

E. Bass

E. Bass

S. Bass

S. Bass

Pad 1

FX 1

FX 4

FX 5

Tina Turner - The Best 2

Flute

♩ = 107,002419

4

9

2

15

19

24

29

34

3

39

43

46

3

2



101



106



111





# Tina Turner - The Best 2

## Percussion

♩ = 107,002419

6

10

14

18

23

28

32

37

42

V.S.



46

Musical notation for measure 46, featuring a treble clef and a double bar line. The staff contains a sequence of notes and rests, including a dotted quarter note, an eighth note, and a quarter note, followed by a series of eighth notes and quarter notes.

50

Musical notation for measure 50, featuring a treble clef and a double bar line. The staff contains a sequence of notes and rests, including a dotted quarter note, an eighth note, and a quarter note, followed by a series of eighth notes and quarter notes.

55

Musical notation for measure 55, featuring a treble clef and a double bar line. The staff contains a sequence of notes and rests, including a dotted quarter note, an eighth note, and a quarter note, followed by a series of eighth notes and quarter notes.

59

Musical notation for measure 59, featuring a treble clef and a double bar line. The staff contains a sequence of notes and rests, including a dotted quarter note, an eighth note, and a quarter note, followed by a series of eighth notes and quarter notes.

64

Musical notation for measure 64, featuring a treble clef and a double bar line. The staff contains a sequence of notes and rests, including a dotted quarter note, an eighth note, and a quarter note, followed by a series of eighth notes and quarter notes.

69

Musical notation for measure 69, featuring a treble clef and a double bar line. The staff contains a sequence of notes and rests, including a dotted quarter note, an eighth note, and a quarter note, followed by a series of eighth notes and quarter notes.

74

Musical notation for measure 74, featuring a treble clef and a double bar line. The staff contains a sequence of notes and rests, including a dotted quarter note, an eighth note, and a quarter note, followed by a series of eighth notes and quarter notes.

78

Musical notation for measure 78, featuring a treble clef and a double bar line. The staff contains a sequence of notes and rests, including a dotted quarter note, an eighth note, and a quarter note, followed by a series of eighth notes and quarter notes.

82

Musical notation for measure 82, featuring a treble clef and a double bar line. The staff contains a sequence of notes and rests, including a dotted quarter note, an eighth note, and a quarter note, followed by a series of eighth notes and quarter notes.

86

Musical notation for measure 86, featuring a treble clef and a double bar line. The staff contains a sequence of notes and rests, including a dotted quarter note, an eighth note, and a quarter note, followed by a series of eighth notes and quarter notes.

Percussion

90

Musical notation for measure 90, featuring a drum set icon on the left. The notation consists of two staves: the upper staff has a series of eighth notes with stems pointing down, and the lower staff has a series of eighth notes with stems pointing up. There are some 'x' marks above the first few notes in the upper staff.

94

Musical notation for measure 94, featuring a drum set icon on the left. The notation consists of two staves: the upper staff has a series of eighth notes with stems pointing down, and the lower staff has a series of eighth notes with stems pointing up.

98

Musical notation for measure 98, featuring a drum set icon on the left. The notation consists of two staves: the upper staff has a series of eighth notes with stems pointing down, and the lower staff has a series of eighth notes with stems pointing up.

102

Musical notation for measure 102, featuring a drum set icon on the left. The notation consists of two staves: the upper staff has a series of eighth notes with stems pointing down, and the lower staff has a series of eighth notes with stems pointing up.

106

Musical notation for measure 106, featuring a drum set icon on the left. The notation consists of two staves: the upper staff has a series of eighth notes with stems pointing down, and the lower staff has a series of eighth notes with stems pointing up.

110

Musical notation for measure 110, featuring a drum set icon on the left. The notation consists of two staves: the upper staff has a series of eighth notes with stems pointing down, and the lower staff has a series of eighth notes with stems pointing up.

113

Musical notation for measure 113, featuring a drum set icon on the left. The notation consists of two staves: the upper staff has a series of eighth notes with stems pointing down, and the lower staff has a series of eighth notes with stems pointing up. The measure ends with a double bar line and a '2' indicating a repeat.

♩ = 107,002419

17

21

24

27

4

32

34

36

38

40

42

V.S.

44



46



49



52



55



60



62



64



66



68





Tina Turner - The Best 2

Electric Guitar

♩ = 107,002419

43

47 28

77

79

81 8

91

96

100

105

109

V.S.

2

Electric Guitar

113

2

The image shows a single staff of music in treble clef. Measure 113 contains a quarter rest, followed by a quarter note with a flat (Bb), a quarter note with a flat (Ab), a quarter note with a flat (G), and a quarter note with a flat (F). Measure 114 contains a quarter rest, a quarter note with a flat (F), a quarter note with a flat (E), a quarter note with a flat (D), and a quarter note with a flat (C). Measure 115 contains a quarter rest, a quarter note with a flat (C), a quarter note with a flat (B), a quarter note with a flat (A), and a quarter note with a flat (G). The staff ends with a double bar line and a fermata. A large number '2' is positioned above the staff in the final measure.





59



61



63



65



67



69



71



73



91



93



95



97



99



101



103



105



107



109



111



113





Fretless Electric Bass

75

Musical staff for fretless electric bass, measures 75-80. Measure 75 has a treble clef and a key signature of one sharp (F#). It contains several chords and melodic lines. Measure 80 has a whole rest.

81

Musical staff for fretless electric bass, measures 81-82. Measure 81 has a treble clef and a key signature of one flat (Bb). It contains chords and a melodic line. Measure 82 has an 8-measure rest.

92

Musical staff for fretless electric bass, measures 92-94. Measure 92 has a treble clef and a key signature of one flat (Bb). It contains a complex melodic line with many sixteenth notes.

95

Musical staff for fretless electric bass, measures 95-97. Measure 95 has a treble clef and a key signature of one flat (Bb). It contains a melodic line with eighth notes and some chords.

98

Musical staff for fretless electric bass, measures 98-100. Measure 98 has a treble clef and a key signature of one flat (Bb). It contains a melodic line with eighth notes and some chords.

101

Musical staff for fretless electric bass, measures 101-103. Measure 101 has a treble clef and a key signature of one flat (Bb). It contains a melodic line with eighth notes and some chords.

104

Musical staff for fretless electric bass, measures 104-106. Measure 104 has a treble clef and a key signature of one flat (Bb). It contains a melodic line with eighth notes and some chords.

107

Musical staff for fretless electric bass, measures 107-109. Measure 107 has a treble clef and a key signature of one flat (Bb). It contains a melodic line with eighth notes and some chords.

110

Musical staff for fretless electric bass, measures 110-112. Measure 110 has a treble clef and a key signature of one flat (Bb). It contains a melodic line with eighth notes and some chords.

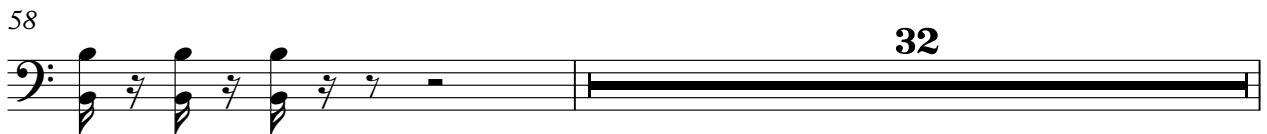
113

Musical staff for fretless electric bass, measures 113-114. Measure 113 has a treble clef and a key signature of one flat (Bb). It contains a melodic line with eighth notes and some chords. Measure 114 has a 2-measure rest.

Tina Turner - The Best 2

Synth Bass

♩ = 107,002419



91



96



100



105



109



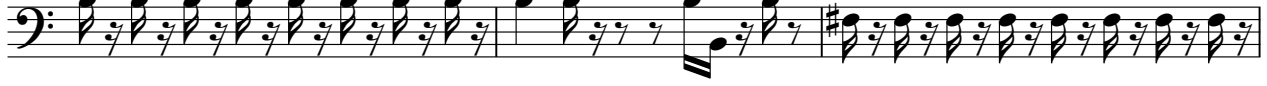
113



# Tina Turner - The Best 2

## Synth Bass

♩ = 107,002419



V.S.

24



26



28



31



33



35



37



39



41



43







67



69



71



73



76



81



85



89



92



94



96



98



100



102



104



106



108



110



112



114



2

Tina Turner - The Best 2

Pad 1 (New Age)

♩ = 107,002419

7 2

13

18 2 2

25

30 18

52

57 16

77

83

89 15

2

Pad 1 (New Age)

108



2

♩ = 107,002419

13

17

29

31

24

58

48

108

2

♩ = 107,002419

13



17

8



28



32



36



40



44

8



55

59

64

68

73

84

89

98

108

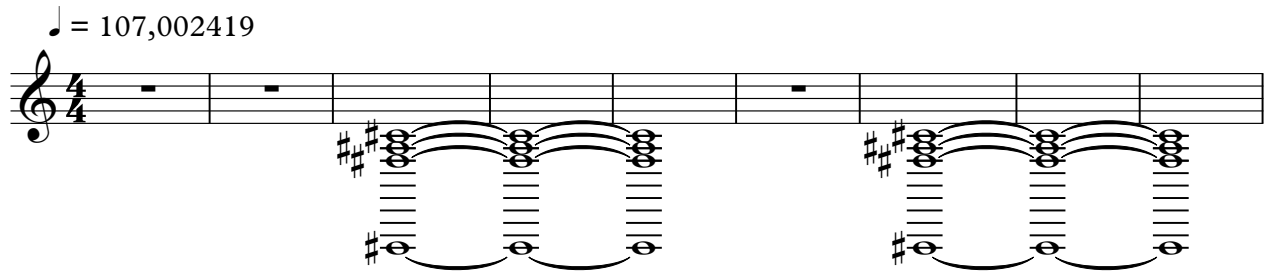
113



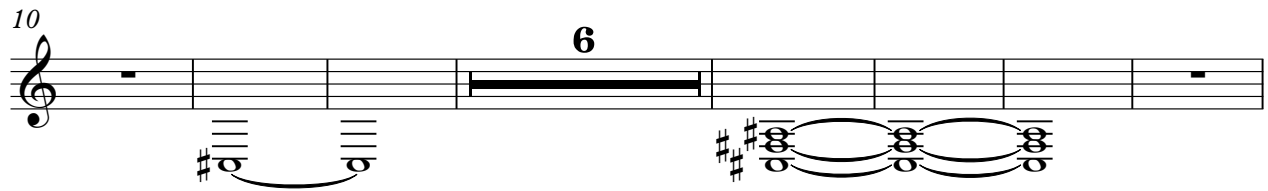
FX 5 (Brightness)

Tina Turner - The Best 2

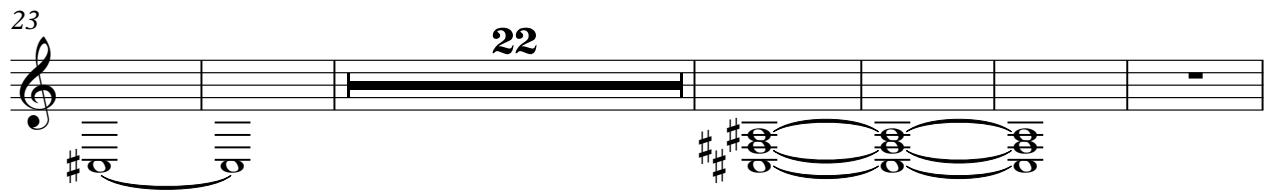
♩ = 107,002419



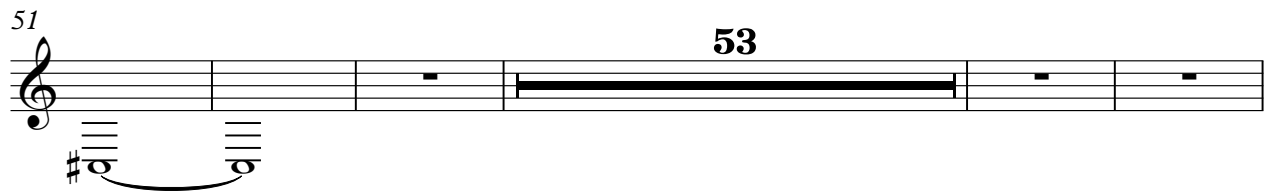
10



23



51



109

