

Westlife - Swear It Again

♩ = 64,999992

habble@hotmail.com

Swear it again

Westlife



5

Perc.

Epex

habble@hotmail.com

Sequenced by Habble

Swear it again

Westlife



9

Perc.

Epex

habble@hotmail.com

Sequenced by Habble

Comments & Suggestions:

www.shawnsworld.com

Swear it again

Westlife

13

Perc.

Epex

habble@hotmail.com

Sequenced by Habble

Comments & Suggestions:

Rev. Cym.

www.shawnsworld.com

Swear it again

Westlife

Solo

Solo



16

Perc.

Epex

habble@hotmail.com

Sequenced by Habble

Comments & Suggestions:

www.shawnsworld.com

Swear it again

Westlife

Solo

Solo

19

Perc.

Epex

hable@hotmail.com

Sequenced by Hable

Comments & Suggestions:

www.shawnsworld.com

Swear it again

Westlife

Solo

Solo



22

Perc.

Epex

hable@hotmail.com

Sequenced by Hable

Rev. Cym.

Swear it again

Westlife

Solo

Solo

26

Perc.

Epex

hubble@hotmail.com

Sequenced by Hubble

www.shawnsworld.com

Swear it again

Solo

Solo



29

Perc.

Epex

hubble@hotmail.com

Sequenced by Hubble

www.shawnsworld.com

Swear it again

Solo

Solo

32 Perc.

Epex

hable@hotmail.com

Sequenced by Hable

The MIDI Database!

www.shawnsworld.com

Solo

Solo



35 Perc.

Epex

hable@hotmail.com

Sequenced by Hable

Comments & Suggestions:

Rev. Cym.

The MIDI Database!

www.shawnsworld.com

Swear it again

Solo

Solo

38

Perc.

Epex

hable@hotmail.com

Sequenced by Hable

Comments & Suggestions:

The MIDI Database!

www.shawnsworld.com

Swear it again

Solo

Solo



41

Perc.

Epex

hable@hotmail.com

Sequenced by Hable

Comments & Suggestions:

The MIDI Database!

www.shawnsworld.com

Swear it again

Solo

Solo

44 7

Perc.

Epex

habble@hotmail.com

Sequenced by Habble

Rev. Cym.

The MIDI Database!

www.shawnsworld.com

Swear it again

Solo

Solo



47

Perc.

habble@hotmail.com

Sequenced by Habble

The MIDI Database!

www.shawnsworld.com

Solo

Solo

51

Perc.

Epex

hable@hotmail.com

Sequenced by Hable

Comments & Suggestions:

Rev. Cym.

The MIDI Database!

www.shawnsworld.com

Swear it again

Solo

Solo

Musical notation for measures 51-53, including MIDI pitch values such as 64,999992, 60,999973, 64,000000, and 62,999996.



54

Perc.

Epex

hable@hotmail.com

Sequenced by Hable

Comments & Suggestions:

The MIDI Database!

Swear it again

Solo

Solo

Musical notation for measures 54-56, including a triplet in the Comments & Suggestions staff.

57

Perc.

Epex

habble@hotmail.com

Sequenced by Habble

Comments & Suggestions:

The MIDI Database!

www.shawnsworld.com

Swear it again

Solo

Solo



60

Perc.

Epex

habble@hotmail.com

Sequenced by Habble

Comments & Suggestions:

Rev. Cym.

The MIDI Database!

www.shawnsworld.com

Swear it again

Solo

Solo

Percussion

♩ = 64,999992

5

10

14

17

20

23

27

30

33

36

V.S.

Percussion

39

42

44

47

50

♩ = 64,999992

53

56

59

62

♩ = 64,999992

♩ = 64,999992

3

Epex

♩ = 64,999992

6

10

15

20

25

31

36

41

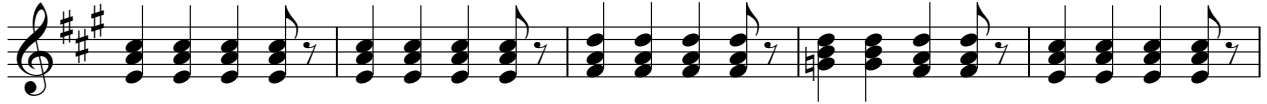
44

7

2

Epex

53 ♪ = 64,999992



58



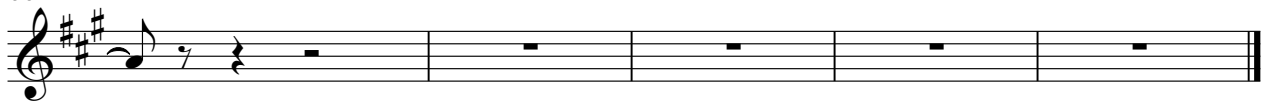
63

♪ = 64,999992 ♪ = 62,999996 ♪ = 60,999992 ♪ = 40,000000



66

♪ = 64,999992 ♪ = 62,999996 ♪ = 60,999992 ♪ = 40,000000



♩ = 64,999992

5

8

11

14

18

22

25

28

31

V.S.

Sequenced by Habble

♩ = 64,999992

5

11

16

20

24

28

31

35

39

42

V.S.

45



49



53 ♩ = 64,999992



56



59



64 ♩ = 40,000000

♩ = 64,999992



Comments & Suggestions:

♩ = 64,999992

10 2

16

21 15

39

43 8 92

54 3

57 3

60 2 ♩ = 64,999992 ♩ = 64,999992 ♩ = 64,999992

64 3 ♩ = 40,000000 ♩ = 64,999992 ♩ = 40,000000

Reverse Cymbals

♩ = 64,999992

13 6

23

12 6

44

6 992

54

6

63

3 10,000000 40,000000

♩ = 64,999992

10

16

20 **5**

28

35

40

45

51 **4**

58

64

♩ = 64,999992

♩ = 64,999992

Swear it again

♩ = 64,999992

6

11

16

22

30

40

45

56

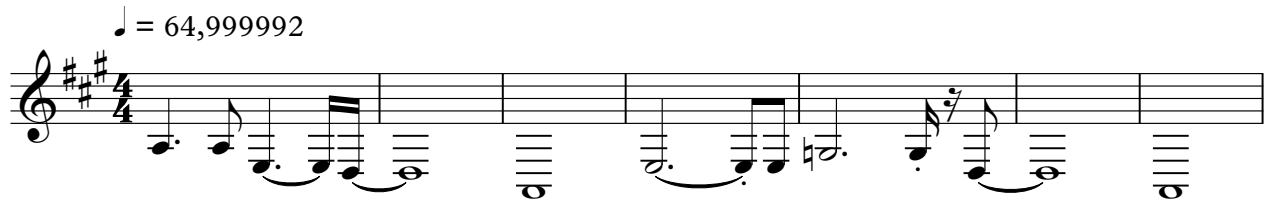
62

♩ = 64,999992

♩ = 64,999992

Westlife

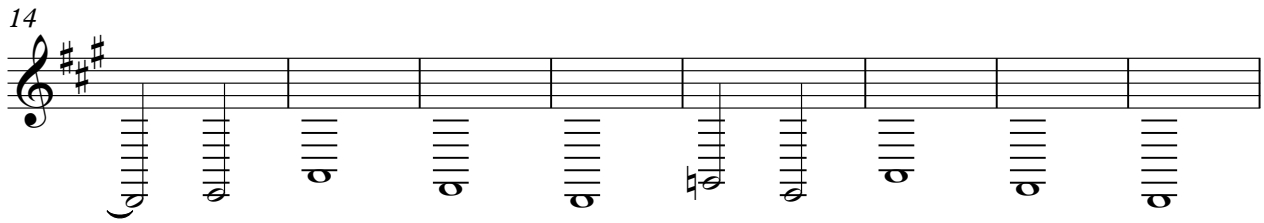
♩ = 64,999992



8

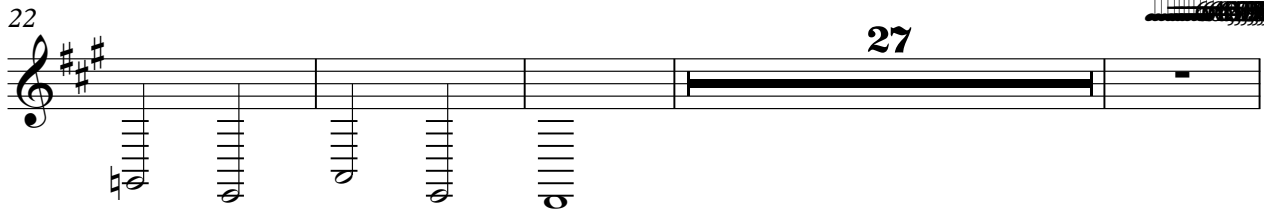


14



22

27



53

♩ = 64,999992

10

3



Solo

♩ = 64,999992

14

17

20

23

31

35

39

42

45

48

Solo

♩ = 64,999992

14

17

20

23

30

34

37

40

43

46

