

Traditional Publ 1853 - Il Est N Le Divin Enfant

$\text{♩} = 120,000000$

Piano R 

$\text{♩} = 120,000000$

Piano L 

Melody 

6

Piano R 

Piano L 

Melody 

11

Piano R 

Piano L 

Melody 

16

Piano R 

Piano L 

Melody 

This system covers measures 16 to 20. The Piano R part starts with a treble clef and a key signature of one flat. It features a melody of quarter notes in the first two measures, followed by rests for the next two measures. The Piano L part starts with a bass clef and features a bass line of quarter notes in the first two measures, followed by a sequence of chords in the next two measures. The Melody part starts with a treble clef and features a melody of quarter notes throughout the five measures.

21

Piano R 

Piano L 

Melody 

This system covers measures 21 to 25. The Piano R part starts with a treble clef and features a melody of quarter notes in the first two measures, followed by rests for the next two measures. The Piano L part starts with a bass clef and features a bass line of quarter notes in the first two measures, followed by a sequence of chords in the next two measures. The Melody part starts with a treble clef and features a melody of quarter notes throughout the five measures.

26

Piano R 

Piano L 

Melody 

This system covers measures 26 to 30. The Piano R part starts with a treble clef and features rests in the first two measures, followed by a melody of quarter notes in the next three measures. The Piano L part starts with a bass clef and features a sequence of chords in the first two measures, followed by a bass line of quarter notes in the next three measures. The Melody part starts with a treble clef and features a melody of quarter notes throughout the five measures.

31

Piano R 

Piano L 

Melody 

This system covers measures 31 to 35. The Piano R part starts with a treble clef and features rests in the first two measures, followed by a melody of quarter notes in the next three measures. The Piano L part starts with a bass clef and features a sequence of chords in the first two measures, followed by a bass line of quarter notes in the next three measures. The Melody part starts with a treble clef and features a melody of quarter notes throughout the five measures.

36

Piano R

Piano L

Melody

41

Piano R

Piano L

Melody

46

Piano R

Piano L

Melody

51

Piano R

Piano L

Melody

56

Piano R

Piano L

Melody

61

Piano R

Piano L

Melody

66

Piano R

Piano L

Melody

71

Piano R

Piano L

Melody

♩ = 120,000000

9

15

22

30

37

43

51

59

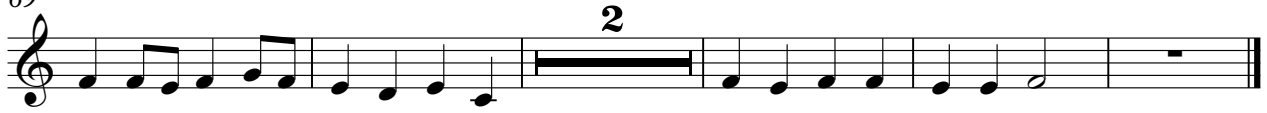
63

Detailed description: The image shows a musical score for a piece titled "Il Est N Le Divin Enfant" in 4/4 time. The tempo is marked as ♩ = 120,000000. The score consists of ten staves of music. The first staff begins with a treble clef and a 4/4 time signature. The music is written in a simple, folk-like style. There are several double bar lines with a "2" above them, indicating a two-measure rest or a specific rhythmic pattern. The notes are primarily quarter and eighth notes, with some rests. The key signature is not explicitly shown but appears to be C major or a similar simple key. The staves are numbered 9, 15, 22, 30, 37, 43, 51, 59, and 63, indicating the starting measure of each line.

2

Piano R

69



2

Piano L

61



67



71



Traditional Publ 1853 - II Est N Le Divin Enfant

Melody

♩ = 120,000000

6

12

18

23

29

34

40

46

52

Detailed description: The image shows a musical score for a melody in 4/4 time. The tempo is marked as ♩ = 120,000000. The score consists of ten staves of music, each starting with a measure number: 6, 12, 18, 23, 29, 34, 40, 46, and 52. The key signature has two flats (B-flat and E-flat). The melody is written in a single treble clef. The notes are primarily quarter and eighth notes, with some rests. The piece concludes with a double bar line at the end of the final staff.

V.S.

2

Melody

57



63



69



72

