

Turrican 2 - Check the Gripper

♩ = 116,999886

CPU: Atari ST, Amiga, SNES, PC.

BY: Chris Huelsbeck

3

CPU: Atari ST, Amiga, SNES, PC.

RE: Oedipus (oedipus@mi.is)

BY: Chris Huelsbeck

Turrican 2 - Check the Gripper

4

CPU: Atari ST, Amiga, SNES, PC.

RE: Oedipus (oedipus@mi.is)

BY: Chris Huelsbeck

Turrican 2 - Check the Gripper

5

CPU: Atari ST, Amiga, SNES, PC.

RE: Oedipus (oedipus@mi.is)

BY: Chris Huelsbeck

Turrican 2 - Check the Gripper

Detailed description of measure 5: The drum staff shows a pattern of eighth notes: quarter, eighth, quarter, eighth, quarter, eighth, quarter, eighth. The piano staff has a melody starting on G4, moving to A4, B4, C5, then descending: B4, A4, G4, F4, E4, D4, C4. The bass staff has a bass line: G2, F2, E2, D2, C2, B1, A1, G1. The guitar staff has a single note on the first string, first fret, with a sharp sign (#).

6

CPU: Atari ST, Amiga, SNES, PC.

RE: Oedipus (oedipus@mi.is)

BY: Chris Huelsbeck

Turrican 2 - Check the Gripper

Detailed description of measure 6: The drum staff shows a pattern of eighth notes: quarter, eighth, quarter, eighth, quarter, eighth, quarter, eighth. The piano staff has a melody starting on G4, moving to A4, B4, C5, then descending: B4, A4, G4, F4, E4, D4, C4. The bass staff has a bass line: G2, F2, E2, D2, C2, B1, A1, G1. The guitar staff has a single note on the first string, first fret, with a sharp sign (#).

7

CPU: Atari ST, Amiga, SNES, PC.

RE: Oedipus (oedipus@mi.is)

BY: Chris Huelsbeck

Turrican 2 - Check the Gripper

Detailed description of measure 7: The drum staff shows a pattern of eighth notes: quarter, eighth, quarter, eighth, quarter, eighth, quarter, eighth. The piano staff has a melody starting on G4, moving to A4, B4, C5, then descending: B4, A4, G4, F4, E4, D4, C4. The bass staff has a bass line: G2, F2, E2, D2, C2, B1, A1, G1. The guitar staff has a single note on the first string, first fret, with a sharp sign (#).

8

CPU: Atari ST, Amiga, SNES, PC.

RE: Oedipus (oedipus@mi.is)

BY: Chris Huelsbeck

Turrican 2 - Check the Gripper



9

CPU: Atari ST, Amiga, SNES, PC.

RE: Oedipus (oedipus@mi.is)

BY: Chris Huelsbeck

Turrican 2 - Check the Gripper



10

CPU: Atari ST, Amiga, SNES, PC.

RE: Oedipus (oedipus@mi.is)

BY: Chris Huelsbeck

Turrican 2 - Check the Gripper



11

CPU: Atari ST, Amiga, SNES, PC.

RE: Oedipus (oedipus@mi.is)

BY: Chris Huelsbeck

Turrican 2 - Check the Gripper

12

CPU: Atari ST, Amiga, SNES, PC.

RE: Oedipus (oedipus@mi.is)

BY: Chris Huelsbeck

Turrican 2 - Check the Gripper

13

CPU: Atari ST, Amiga, SNES, PC.

RE: Oedipus (oedipus@mi.is)

BY: Chris Huelsbeck

Turrican 2 - Check the Gripper

14

CPU: Atari ST, Amiga, SNES, PC.

RE: Oedipus (oedipus@mi.is)

BY: Chris Huelsbeck

Turrican 2 - Check the Gripper

15

CPU: Atari ST, Amiga, SNES, PC.

RE: Oedipus (oedipus@mi.is)

BY: Chris Huelsbeck

Turrican 2 - Check the Gripper

16

CPU: Atari ST, Amiga, SNES, PC.

RE: Oedipus (oedipus@mi.is)

BY: Chris Huelsbeck

Turrican 2 - Check the Gripper

17

CPU: Atari ST, Amiga, SNES, PC.

RE: Oedipus (oedipus@mi.is)

BY: Chris Huelsbeck

Turrican 2 - Check the Gripper

18

CPU: Atari ST, Amiga, SNES, PC.

RE: Oedipus (oedipus@mi.is)

BY: Chris Huelsbeck

Turrican 2 - Check the Gripper

19

CPU: Atari ST, Amiga, SNES, PC.

RE: Oedipus (oedipus@mi.is)

BY: Chris Huelsbeck

Turrican 2 - Check the Gripper

20

CPU: Atari ST, Amiga, SNES, PC.

RE: Oedipus (oedipus@mi.is)

BY: Chris Huelsbeck

Turrican 2 - Check the Gripper



21

CPU: Atari ST, Amiga, SNES, PC.

RE: Oedipus (oedipus@mi.is)

BY: Chris Huelsbeck

Turrican 2 - Check the Gripper



22

CPU: Atari ST, Amiga, SNES, PC.

RE: Oedipus (oedipus@mi.is)

BY: Chris Huelsbeck

Turrican 2 - Check the Gripper



23

CPU: Atari ST, Amiga, SNES, PC.

RE: Oedipus (oedipus@mi.is)

BY: Chris Huelsbeck

Turrican 2 - Check the Gripper

Detailed description of measure 23: The drum staff shows a pattern of eighth notes: x | x | x | x. The treble clef staff has a melodic line starting on G4, moving up to A4, B4, C5, then down to B4, A4, G4. The bass clef staff has a bass line starting on G2, moving up to A2, B2, C3, then down to B2, A2, G2. The guitar staff has a single note on the 1st fret of the 6th string.

24

CPU: Atari ST, Amiga, SNES, PC.

RE: Oedipus (oedipus@mi.is)

BY: Chris Huelsbeck

Turrican 2 - Check the Gripper

Detailed description of measure 24: The drum staff shows a pattern of eighth notes: x | x | x | x. The treble clef staff has a melodic line starting on G4, moving up to A4, B4, C5, then down to B4, A4, G4. The bass clef staff has a bass line starting on G2, moving up to A2, B2, C3, then down to B2, A2, G2. The guitar staff has a melodic line starting on G4, moving up to A4, B4, C5, then down to B4, A4, G4.

25

CPU: Atari ST, Amiga, SNES, PC.

RE: Oedipus (oedipus@mi.is)

BY: Chris Huelsbeck

Turrican 2 - Check the Gripper

Detailed description of measure 25: The drum staff shows a pattern of eighth notes: x | x | x | x. The treble clef staff has a melodic line starting on G4, moving up to A4, B4, C5, then down to B4, A4, G4. The bass clef staff has a bass line starting on G2, moving up to A2, B2, C3, then down to B2, A2, G2. The guitar staff has a single note on the 1st fret of the 6th string.

53.7"
27.1,00
loop

9

26

CPU: Atari ST, Amiga, SNES, PC.

RE: Oedipus (oedipus@mi.is)

BY: Chris Huelsbeck

Turrican 2 - Check the Gripper

28

CPU: Atari ST, Amiga, SNES, PC.

BY: Chris Huelsbeck

29

CPU: Atari ST, Amiga, SNES, PC.

RE: Oedipus (oedipus@mi.is)

BY: Chris Huelsbeck

Turrican 2 - Check the Gripper

30

CPU: Atari ST, Amiga, SNES, PC.

RE: Oedipus (oedipus@mi.is)

BY: Chris Huelsbeck

Turrican 2 - Check the Gripper



31

CPU: Atari ST, Amiga, SNES, PC.

RE: Oedipus (oedipus@mi.is)

BY: Chris Huelsbeck

Turrican 2 - Check the Gripper



32

CPU: Atari ST, Amiga, SNES, PC.

RE: Oedipus (oedipus@mi.is)

BY: Chris Huelsbeck

Turrican 2 - Check the Gripper



33

CPU: Atari ST, Amiga, SNES, PC.

RE: Oedipus (oedipus@mi.is)

BY: Chris Huelsbeck

Turrican 2 - Check the Gripper

34

CPU: Atari ST, Amiga, SNES, PC.

RE: Oedipus (oedipus@mi.is)

BY: Chris Huelsbeck

Turrican 2 - Check the Gripper

35

CPU: Atari ST, Amiga, SNES, PC.

RE: Oedipus (oedipus@mi.is)

BY: Chris Huelsbeck

Turrican 2 - Check the Gripper

36

CPU: Atari ST, Amiga, SNES, PC.

RE: Oedipus (oedipus@mi.is)

BY: Chris Huelsbeck

Turrican 2 - Check the Gripper



37

CPU: Atari ST, Amiga, SNES, PC.

RE: Oedipus (oedipus@mi.is)

BY: Chris Huelsbeck

Turrican 2 - Check the Gripper



38

CPU: Atari ST, Amiga, SNES, PC.

RE: Oedipus (oedipus@mi.is)

BY: Chris Huelsbeck

Turrican 2 - Check the Gripper



39

CPU: Atari ST, Amiga, SNES, PC.

RE: Oedipus (oedipus@mi.is)

BY: Chris Huelsbeck

Turrican 2 - Check the Gripper

40

CPU: Atari ST, Amiga, SNES, PC.

RE: Oedipus (oedipus@mi.is)

BY: Chris Huelsbeck

Turrican 2 - Check the Gripper

41

CPU: Atari ST, Amiga, SNES, PC.

RE: Oedipus (oedipus@mi.is)

BY: Chris Huelsbeck

Turrican 2 - Check the Gripper

42

CPU: Atari ST, Amiga, SNES, PC.

RE: Oedipus (oedipus@mi.is)

BY: Chris Huelsbeck

Turrican 2 - Check the Gripper

43

CPU: Atari ST, Amiga, SNES, PC.

RE: Oedipus (oedipus@mi.is)

BY: Chris Huelsbeck

Turrican 2 - Check the Gripper

44

CPU: Atari ST, Amiga, SNES, PC.

RE: Oedipus (oedipus@mi.is)

BY: Chris Huelsbeck

Turrican 2 - Check the Gripper

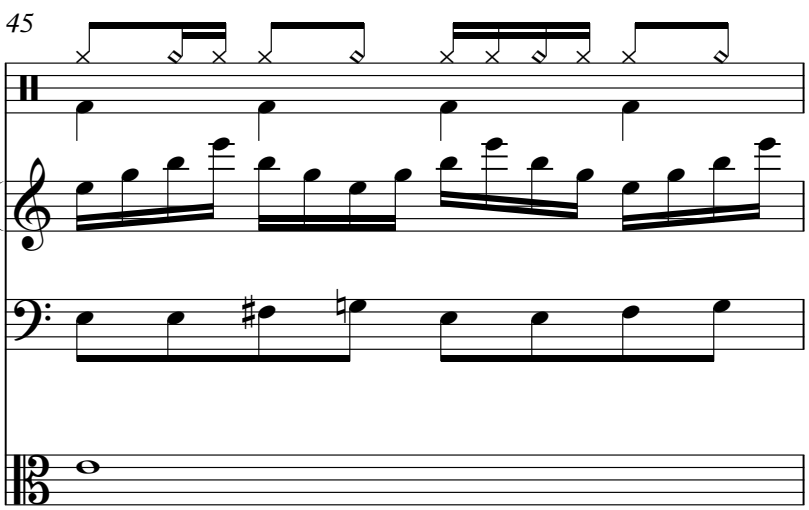
45

CPU: Atari ST, Amiga, SNES, PC.

RE: Oedipus (oedipus@mi.is)

BY: Chris Huelsbeck

Turrican 2 - Check the Gripper



46

CPU: Atari ST, Amiga, SNES, PC.

RE: Oedipus (oedipus@mi.is)

BY: Chris Huelsbeck

Turrican 2 - Check the Gripper



47

CPU: Atari ST, Amiga, SNES, PC.

RE: Oedipus (oedipus@mi.is)

BY: Chris Huelsbeck

Turrican 2 - Check the Gripper



48

CPU: Atari ST, Amiga, SNES, PC.

RE: Oedipus (oedipus@mi.is)

BY: Chris Huelsbeck

Turrican 2 - Check the Gripper

49

CPU: Atari ST, Amiga, SNES, PC.

RE: Oedipus (oedipus@mi.is)

BY: Chris Huelsbeck

Turrican 2 - Check the Gripper

50

CPU: Atari ST, Amiga, SNES, PC.

RE: Oedipus (oedipus@mi.is)

BY: Chris Huelsbeck

Turrican 2 - Check the Gripper

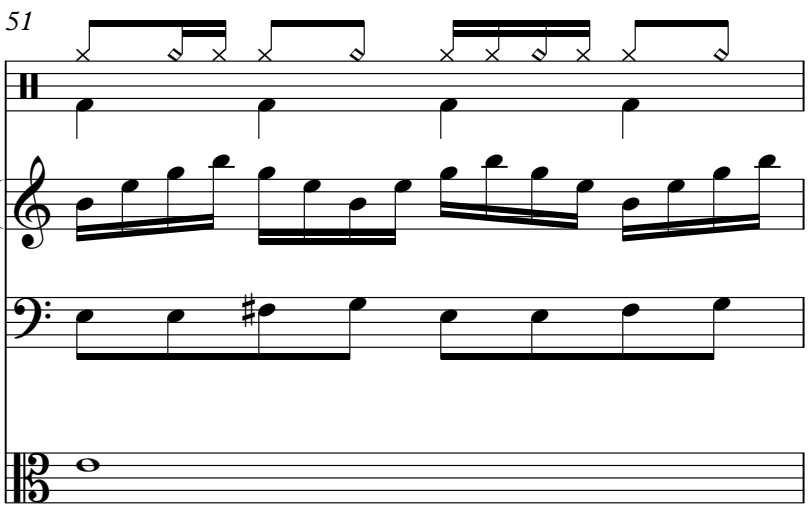
51

CPU: Atari ST, Amiga, SNES, PC.

RE: Oedipus (oedipus@mi.is)

BY: Chris Huelsbeck

Turrican 2 - Check the Gripper



52

CPU: Atari ST, Amiga, SNES, PC.

RE: Oedipus (oedipus@mi.is)

BY: Chris Huelsbeck

Turrican 2 - Check the Gripper



54

CPU: Atari ST, Amiga, SNES, PC.

BY: Chris Huelsbeck



56

CPU: Atari ST, Amiga, SNES, PC.

BY: Chris Huelsbeck



Turrican 2 - Check the Gripper
CPU: Atari ST, Amiga, SNES, PC.

♩ = 116,999886

The image displays a musical score for the game 'Turrican 2 - Check the Gripper'. It consists of ten systems of music, each starting with a measure number (4, 7, 10, 13, 16, 19, 22, 25, 28). Each system contains two staves: a top staff with a treble clef and a bottom staff with a bass clef. The top staff features a complex, rhythmic melody with many beamed notes and rests, while the bottom staff has a simpler bass line with quarter notes. The tempo is indicated as ♩ = 116,999886. The score is presented in a clean, black-and-white format.

V.S.

31

Musical notation for measure 31, consisting of two staves. The upper staff contains a sequence of eighth notes with 'x' marks above them, indicating fretted notes. The lower staff contains a sequence of quarter notes.

34

Musical notation for measure 34, consisting of two staves. The upper staff contains a sequence of eighth notes with 'x' marks above them. The lower staff contains a sequence of quarter notes.

37

Musical notation for measure 37, consisting of two staves. The upper staff contains a sequence of eighth notes with 'x' marks above them. The lower staff contains a sequence of quarter notes.

40

Musical notation for measure 40, consisting of two staves. The upper staff contains a sequence of eighth notes with 'x' marks above them. The lower staff contains a sequence of quarter notes.

43

Musical notation for measure 43, consisting of two staves. The upper staff contains a sequence of eighth notes with 'x' marks above them. The lower staff contains a sequence of quarter notes.

46

Musical notation for measure 46, consisting of two staves. The upper staff contains a sequence of eighth notes with 'x' marks above them. The lower staff contains a sequence of quarter notes.

49

Musical notation for measure 49, consisting of two staves. The upper staff contains a sequence of eighth notes with 'x' marks above them. The lower staff contains a sequence of quarter notes.

52

Musical notation for measure 52, consisting of two staves. The upper staff contains a sequence of eighth notes with 'x' marks above them. The lower staff contains a sequence of quarter notes.

55

Musical notation for measure 55, consisting of two staves. The upper staff contains a sequence of eighth notes with 'x' marks above them. The lower staff contains a sequence of quarter notes.

Turrican 2 - Check the Gripper

RE: Oedipus (oedipus@mi.is)

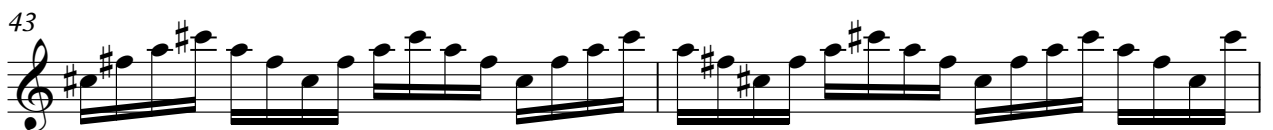
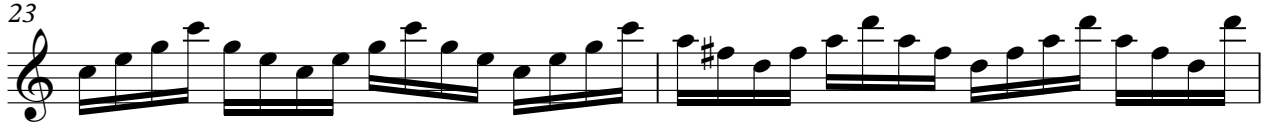
♩ = 116,999886

The image displays a musical score for a guitar piece. It consists of ten staves of music, each starting with a measure number (2, 5, 7, 9, 11, 13, 15, 17, 19, 21). The music is written in a 4/4 time signature. The first staff includes a tempo marking of 116,999886 and a '2' above the first measure. The notation features a complex sequence of notes, including many beamed eighth and sixteenth notes, and various accidentals (sharps and naturals). The key signature appears to be one sharp (F#). The overall style is highly technical and rhythmic.

V.S.

2

RE: Oedipus (oedipus@mi.is)





Turrican 2 - Check the Gripper

BY: Chris Huelsbeck

♩ = 116,999886



5



9



13



17



21



25



29



33



37



V.S.

41



45



49



53



55



Turrigan 2 - Check the Gripper

Turrigan 2 - Check the Gripper

♩ = 116,999886

2

8

14

20

26

34

40

46

50