

Turrican 2 - Loader

♩ = 100,000000

CPU: Atari ST, Amiga.

Turrican 2 - Loader

RE: Oedipus (oedipus@mi.is)

♩ = 100,000000

BY: Chris Huelsbeck?

2

CPU: Atari ST, Amiga.

Turrican 2 - Loader

RE: Oedipus (oedipus@mi.is)

BY: Chris Huelsbeck?

3

CPU: Atari ST, Amiga.

Turrican 2 - Loader

RE: Oedipus (oedipus@mi.is)

BY: Chris Huelsbeck?

4

CPU: Atari ST, Amiga.

Turrican 2 - Loader

RE: Oedipus (oedipus@mi.is)

BY: Chris Huelsbeck?

5

CPU: Atari ST, Amiga.

Turrican 2 - Loader

RE: Oedipus (oedipus@mi.is)

BY: Chris Huelsbeck?

6

CPU: Atari ST, Amiga.

Turrican 2 - Loader

RE: Oedipus (oedipus@mi.is)

BY: Chris Huelsbeck?

7

CPU: Atari ST, Amiga.

Turrican 2 - Loader

RE: Oedipus (oedipus@mi.is)

BY: Chris Huelsbeck?

8

CPU: Atari ST, Amiga.

Turrican 2 - Loader

RE: Oedipus (oedipus@mi.is)

BY: Chris Huelsbeck?

9

CPU: Atari ST, Amiga.

Turrican 2 - Loader

RE: Oedipus (oedipus@mi.is)

BY: Chris Huelsbeck?

10

CPU: Atari ST, Amiga.

Turrican 2 - Loader

RE: Oedipus (oedipus@mi.is)

BY: Chris Huelsbeck?

11

CPU: Atari ST, Amiga.

Turrican 2 - Loader

RE: Oedipus (oedipus@mi.is)

BY: Chris Huelsbeck?

12

CPU: Atari ST, Amiga.

Turrican 2 - Loader

RE: Oedipus (oedipus@mi.is)

BY: Chris Huelsbeck?

13

CPU: Atari ST, Amiga.

Turrican 2 - Loader

RE: Oedipus (oedipus@mi.is)

BY: Chris Huelsbeck?

14

CPU: Atari ST, Amiga.

Turrican 2 - Loader

RE: Oedipus (oedipus@mi.is)

BY: Chris Huelsbeck?

15

CPU: Atari ST, Amiga.

Turrican 2 - Loader

RE: Oedipus (oedipus@mi.is)

BY: Chris Huelsbeck?

16

CPU: Atari ST, Amiga.

Turrican 2 - Loader

RE: Oedipus (oedipus@mi.is)

BY: Chris Huelsbeck?

17

CPU: Atari ST, Amiga.

Turrican 2 - Loader

RE: Oedipus (oedipus@mi.is)

BY: Chris Huelsbeck?

18

CPU: Atari ST, Amiga.

Turrican 2 - Loader

RE: Oedipus (oedipus@mi.is)

BY: Chris Huelsbeck?

19

CPU: Atari ST, Amiga.

Turrican 2 - Loader

RE: Oedipus (oedipus@mi.is)

BY: Chris Huelsbeck?

20

CPU: Atari ST, Amiga.

Turrican 2 - Loader

RE: Oedipus (oedipus@mi.is)

BY: Chris Huelsbeck?

21

CPU: Atari ST, Amiga.

Turrican 2 - Loader

RE: Oedipus (oedipus@mi.is)

BY: Chris Huelsbeck?

22

CPU: Atari ST, Amiga.

Turrican 2 - Loader

RE: Oedipus (oedipus@mi.is)

BY: Chris Huelsbeck?

23

CPU: Atari ST, Amiga.

Turrican 2 - Loader

RE: Oedipus (oedipus@mi.is)

BY: Chris Huelsbeck?

24

CPU: Atari ST, Amiga.

Turrican 2 - Loader

RE: Oedipus (oedipus@mi.is)

BY: Chris Huelsbeck?

25

CPU: Atari ST, Amiga.

Turrican 2 - Loader

RE: Oedipus (oedipus@mi.is)

BY: Chris Huelsbeck?

26

CPU: Atari ST, Amiga.

Turrican 2 - Loader

RE: Oedipus (oedipus@mi.is)

BY: Chris Huelsbeck?

27

CPU: Atari ST, Amiga.

Turrican 2 - Loader

RE: Oedipus (oedipus@mi.is)

BY: Chris Huelsbeck?

28

CPU: Atari ST, Amiga.

Turrican 2 - Loader

RE: Oedipus (oedipus@mi.is)

BY: Chris Huelsbeck?

29

CPU: Atari ST, Amiga.

Turrican 2 - Loader

RE: Oedipus (oedipus@mi.is)

BY: Chris Huelsbeck?

30

CPU: Atari ST, Amiga.

Turrican 2 - Loader

RE: Oedipus (oedipus@mi.is)

BY: Chris Huelsbeck?

31

CPU: Atari ST, Amiga.

Turrican 2 - Loader

RE: Oedipus (oedipus@mi.is)

BY: Chris Huelsbeck?

32

CPU: Atari ST, Amiga.

Turrican 2 - Loader

RE: Oedipus (oedipus@mi.is)

BY: Chris Huelsbeck?

33

CPU: Atari ST, Amiga.

Turrican 2 - Loader

RE: Oedipus (oedipus@mi.is)

BY: Chris Huelsbeck?

34

CPU: Atari ST, Amiga.

Turrican 2 - Loader

RE: Oedipus (oedipus@mi.is)

BY: Chris Huelsbeck?

35

CPU: Atari ST, Amiga.

Turrican 2 - Loader

RE: Oedipus (oedipus@mi.is)

BY: Chris Huelsbeck?

36

CPU: Atari ST, Amiga.

Turrican 2 - Loader

RE: Oedipus (oedipus@mi.is)

BY: Chris Huelsbeck?

37

CPU: Atari ST, Amiga.

Turrican 2 - Loader

RE: Oedipus (oedipus@mi.is)

BY: Chris Huelsbeck?

38

CPU: Atari ST, Amiga.

Turrican 2 - Loader

RE: Oedipus (oedipus@mi.is)

BY: Chris Huelsbeck?

39

CPU: Atari ST, Amiga.

Turrican 2 - Loader

RE: Oedipus (oedipus@mi.is)

BY: Chris Huelsbeck?

40

CPU: Atari ST, Amiga.

Turrican 2 - Loader

RE: Oedipus (oedipus@mi.is)

BY: Chris Huelsbeck?

41

CPU: Atari ST, Amiga.

Turrican 2 - Loader

RE: Oedipus (oedipus@mi.is)

BY: Chris Huelsbeck?

42

CPU: Atari ST, Amiga.

Turrican 2 - Loader

RE: Oedipus (oedipus@mi.is)

BY: Chris Huelsbeck?

43

CPU: Atari ST, Amiga.

Turrican 2 - Loader

RE: Oedipus (oedipus@mi.is)

BY: Chris Huelsbeck?

44

CPU: Atari ST, Amiga.

Turrican 2 - Loader

RE: Oedipus (oedipus@mi.is)

BY: Chris Huelsbeck?

45

CPU: Atari ST, Amiga.

Turrican 2 - Loader

RE: Oedipus (oedipus@mi.is)

BY: Chris Huelsbeck?

46

CPU: Atari ST, Amiga.

Turrican 2 - Loader

RE: Oedipus (oedipus@mi.is)

BY: Chris Huelsbeck?

47

CPU: Atari ST, Amiga.

Turrican 2 - Loader

RE: Oedipus (oedipus@mi.is)

BY: Chris Huelsbeck?

48

CPU: Atari ST, Amiga.

Turrican 2 - Loader

RE: Oedipus (oedipus@mi.is)

BY: Chris Huelsbeck?

49

CPU: Atari ST, Amiga.

Turrican 2 - Loader

RE: Oedipus (oedipus@mi.is)

BY: Chris Huelsbeck?

50

CPU: Atari ST, Amiga.

Turrican 2 - Loader

RE: Oedipus (oedipus@mi.is)

BY: Chris Huelsbeck?

51

CPU: Atari ST, Amiga.

Turrican 2 - Loader

RE: Oedipus (oedipus@mi.is)

BY: Chris Huelsbeck?

52

CPU: Atari ST, Amiga.

Turrican 2 - Loader

RE: Oedipus (oedipus@mi.is)

BY: Chris Huelsbeck?

53

CPU: Atari ST, Amiga.

Turrican 2 - Loader

RE: Oedipus (oedipus@mi.is)

BY: Chris Huelsbeck?

54

CPU: Atari ST, Amiga.

Turrican 2 - Loader

RE: Oedipus (oedipus@mi.is)

BY: Chris Huelsbeck?

55

CPU: Atari ST, Amiga.

Turrican 2 - Loader

RE: Oedipus (oedipus@mi.is)

BY: Chris Huelsbeck?

56

CPU: Atari ST, Amiga.

Turrican 2 - Loader

RE: Oedipus (oedipus@mi.is)

BY: Chris Huelsbeck?

57

CPU: Atari ST, Amiga.

Turrican 2 - Loader

RE: Oedipus (oedipus@mi.is)

BY: Chris Huelsbeck?

58

CPU: Atari ST, Amiga.

Turrican 2 - Loader

RE: Oedipus (oedipus@mi.is)

BY: Chris Huelsbeck?

59

CPU: Atari ST, Amiga.

Turrican 2 - Loader

RE: Oedipus (oedipus@mi.is)

BY: Chris Huelsbeck?

60

CPU: Atari ST, Amiga.

Turrican 2 - Loader

RE: Oedipus (oedipus@mi.is)

BY: Chris Huelsbeck?

61

CPU: Atari ST, Amiga.

Turrican 2 - Loader

RE: Oedipus (oedipus@mi.is)

BY: Chris Huelsbeck?

62

CPU: Atari ST, Amiga.

Turrican 2 - Loader

RE: Oedipus (oedipus@mi.is)

BY: Chris Huelsbeck?

63

CPU: Atari ST, Amiga.

Turrican 2 - Loader

RE: Oedipus (oedipus@mi.is)

BY: Chris Huelsbeck?

64

CPU: Atari ST, Amiga.

Turrican 2 - Loader

RE: Oedipus (oedipus@mi.is)

BY: Chris Huelsbeck?

CPU: Atari ST, Amiga. Turrigan 2 - Loader

♩ = 100,000000



V.S.

31



34



37



40



43



46



49



52



55



58



61



63



Turrigan 2 - Loader

Turrigan 2 - Loader

♩ = 100,000000

The image displays a musical score for the piece 'Turrigan 2 - Loader'. It consists of ten staves of music, each beginning with a measure number (3, 5, 7, 9, 11, 13, 15, 17, 19) on the left. The music is written in 4/4 time, as indicated by the '4' over the first staff. The tempo is marked as ♩ = 100,000000. The notation is dense, featuring a complex rhythmic pattern of eighth and sixteenth notes. The key signature is one flat (B-flat), and the overall texture is highly rhythmic and intricate.

V.S.

The image displays a musical score for the piece "Turrican 2 - Loader". It consists of ten staves of music, each starting with a measure number: 21, 23, 25, 27, 29, 31, 33, 35, 37, and 39. Each staff contains two measures of music. The notation is written on a five-line staff with a treble clef. The key signature is one flat (B-flat), and the time signature is 4/4. The music is characterized by a dense, rhythmic pattern of eighth notes, often grouped in pairs or fours, creating a fast and intricate texture. The notes are primarily in the lower register of the staff, with some higher notes interspersed. The overall feel is that of a driving, mechanical or industrial sound, consistent with the "Loader" title.

41

43

45

47

49

51

53

55

57

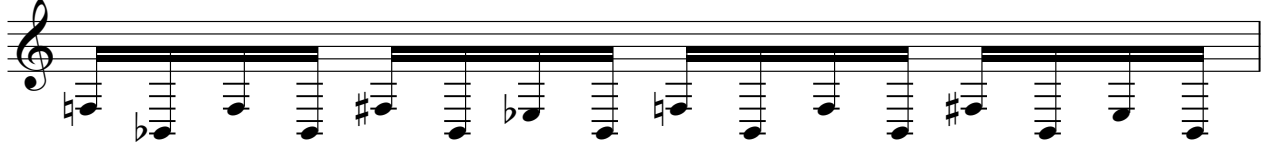
59

V.S.

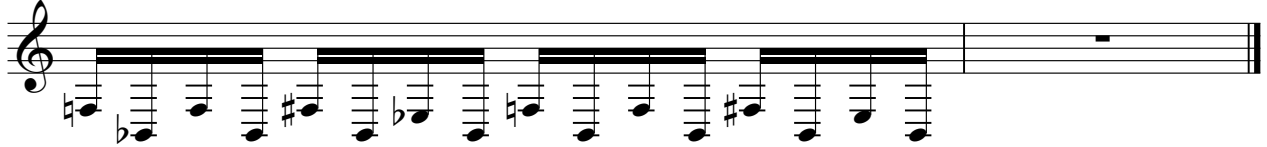
61



63



64



Turrican 2 - Loader

RE: Oedipus (oedipus@mi.is)

♩ = 100,000000



5



9



13



17



21



25



29



33



37



V.S.

2

RE: Oedipus (oedipus@mi.is)

41



45



49



53



57



61



63



BY: Chris Huelsbeck? Turrigan 2 - Loader

♩ = 100,000000



V.S.

21



A musical staff starting at measure 21. The key signature has one flat (Bb). The melody consists of eighth notes with a rhythmic pattern of quarter, eighth, eighth, quarter, eighth, eighth, quarter, eighth, eighth, quarter. The notes are: Bb2, D3, F3, G3, Bb2, D3, F3, G3, Bb2, D3, F3, G3, Bb2, D3, F3, G3, Bb2, D3, F3, G3.

23



A musical staff starting at measure 23. The key signature has one flat (Bb). The melody consists of eighth notes with a rhythmic pattern of quarter, eighth, eighth, quarter, eighth, eighth, quarter, eighth, eighth, quarter. The notes are: Bb2, D3, F3, G3, Bb2, D3, F3, G3, Bb2, D3, F3, G3, Bb2, D3, F3, G3, Bb2, D3, F3, G3.

25



A musical staff starting at measure 25. The key signature has one flat (Bb). The melody consists of eighth notes with a rhythmic pattern of quarter, eighth, eighth, quarter, eighth, eighth, quarter, eighth, eighth, quarter. The notes are: Bb2, D3, F3, G3, Bb2, D3, F3, G3, Bb2, D3, F3, G3, Bb2, D3, F3, G3, Bb2, D3, F3, G3.

27



A musical staff starting at measure 27. The key signature has one flat (Bb). The melody consists of eighth notes with a rhythmic pattern of quarter, eighth, eighth, quarter, eighth, eighth, quarter, eighth, eighth, quarter. The notes are: Bb2, D3, F3, G3, Bb2, D3, F3, G3, Bb2, D3, F3, G3, Bb2, D3, F3, G3, Bb2, D3, F3, G3.

29



A musical staff starting at measure 29. The key signature has one flat (Bb). The melody consists of eighth notes with a rhythmic pattern of quarter, eighth, eighth, quarter, eighth, eighth, quarter, eighth, eighth, quarter. The notes are: Bb2, D3, F3, G3, Bb2, D3, F3, G3, Bb2, D3, F3, G3, Bb2, D3, F3, G3, Bb2, D3, F3, G3.

31



A musical staff starting at measure 31. The key signature has one flat (Bb). The melody consists of eighth notes with a rhythmic pattern of quarter, eighth, eighth, quarter, eighth, eighth, quarter, eighth, eighth, quarter. The notes are: Bb2, D3, F3, G3, Bb2, D3, F3, G3, Bb2, D3, F3, G3, Bb2, D3, F3, G3, Bb2, D3, F3, G3.

33



A musical staff starting at measure 33. The key signature has one flat (Bb). The melody consists of eighth notes with a rhythmic pattern of quarter, eighth, eighth, quarter, eighth, eighth, quarter, eighth, eighth, quarter. The notes are: Bb2, D3, F3, G3, Bb2, D3, F3, G3, Bb2, D3, F3, G3, Bb2, D3, F3, G3, Bb2, D3, F3, G3.

35



A musical staff starting at measure 35. The key signature has one flat (Bb). The melody consists of eighth notes with a rhythmic pattern of quarter, eighth, eighth, quarter, eighth, eighth, quarter, eighth, eighth, quarter. The notes are: Bb2, D3, F3, G3, Bb2, D3, F3, G3, Bb2, D3, F3, G3, Bb2, D3, F3, G3, Bb2, D3, F3, G3.

37



A musical staff starting at measure 37. The key signature has one flat (Bb). The melody consists of eighth notes with a rhythmic pattern of quarter, eighth, eighth, quarter, eighth, eighth, quarter, eighth, eighth, quarter. The notes are: Bb2, D3, F3, G3, Bb2, D3, F3, G3, Bb2, D3, F3, G3, Bb2, D3, F3, G3, Bb2, D3, F3, G3.

39



A musical staff starting at measure 39. The key signature has one flat (Bb). The melody consists of eighth notes with a rhythmic pattern of quarter, eighth, eighth, quarter, eighth, eighth, quarter, eighth, eighth, quarter. The notes are: Bb2, D3, F3, G3, Bb2, D3, F3, G3, Bb2, D3, F3, G3, Bb2, D3, F3, G3, Bb2, D3, F3, G3.

41



43



45



47



49



51



53



55



57



59



V.S.

61



63

