

Ultraje a Rigor - Nada a declarar

♩ = 120,000000

Percussão

Electric Guitar

Electric Guitar

Electric Guitar

Electric Bass

3

Percussão

E. Gtr.

E. Gtr.

E. Gtr.

E. Bass

4

Percussão

E. Gtr.

E. Gtr.

E. Gtr.

E. Bass

5

Percussão

E. Gtr.

E. Gtr.

E. Bass

6

Percussão

E. Gtr.

E. Gtr.

E. Bass

7

Percussão

E. Gtr.

E. Gtr.

E. Bass

8

Percussão

E. Gtr.

E. Gtr.

E. Bass

9

Percussão

E. Gtr.

E. Gtr.

E. Bass

10

Percussão

E. Gtr.

E. Gtr.

E. Bass

11

Percussão

E. Gtr.

E. Gtr.

E. Bass

12

Percussão

E. Gtr.

E. Gtr.

E. Bass

13

Percussão

E. Gtr.

E. Gtr.

E. Bass

14

Percussão

E. Gtr.

E. Gtr.

E. Bass

16

Percussão

E. Gtr.

E. Gtr.

E. Bass

18

Percussão

E. Gtr.

E. Gtr.

E. Bass

20

Percussão

E. Gtr.

E. Gtr.

E. Bass

22

Percussão

E. Gtr.

E. Gtr.

E. Bass

24

Percussão

E. Gtr.

E. Gtr.

E. Bass

26

Percussão

E. Gtr.

E. Gtr.

E. Bass

28

Percussão

E. Gtr.

E. Gtr.

E. Bass

30

Percussão

E. Gtr.

E. Gtr.

E. Bass

31

Percussão

E. Gtr.

E. Gtr.

E. Bass

32

Percussão

E. Gtr.

E. Gtr.

E. Bass

33

Percussão

E. Gtr.

E. Gtr.

E. Bass

34

Percussão

E. Gtr.

E. Gtr.

E. Bass

35

Percussão

E. Gtr.

E. Gtr.

E. Bass

36

Percussão

E. Gtr.

E. Gtr.

E. Bass

37

Percussão

E. Gtr.

E. Gtr.

E. Bass

38

Percussão

E. Gtr.

E. Gtr.

E. Bass

40

Percussão

E. Gtr.

E. Gtr.

E. Bass

Detailed description: This system covers measures 40 and 41. The percussion part features a steady snare drum pattern of eighth notes. The first electric guitar part plays a simple quarter-note melody. The second electric guitar part provides a rhythmic accompaniment with chords and eighth notes. The bass guitar part follows a similar quarter-note pattern.

42

Percussão

E. Gtr.

E. Gtr.

E. Bass

Detailed description: This system covers measures 42 and 43. In measure 42, the percussion continues with eighth notes. In measure 43, there is a rest for the snare drum. The first electric guitar part also has a rest in measure 43. The second electric guitar part continues with chords and eighth notes. The bass guitar part transitions from quarter notes to eighth notes in measure 43.

44

Percussão

E. Gtr.

E. Gtr.

E. Bass

Detailed description: This system covers measures 44 and 45. The percussion part resumes with eighth notes. The first electric guitar part continues with quarter notes. The second electric guitar part continues with chords and eighth notes. The bass guitar part continues with quarter notes.

46

Percussão

E. Gtr.

E. Gtr.

E. Bass

49

Percussão

E. Gtr.

E. Gtr.

E. Bass

52

Percussão

E. Gtr.

E. Gtr.

E. Bass

53

Percussão

E. Gtr.

E. Gtr.

E. Bass

54

Percussão

E. Gtr.

E. Gtr.

E. Bass

55

Percussão

E. Gtr.

E. Gtr.

E. Bass

57

Percussão

E. Gtr.

E. Gtr.

E. Bass

59

Percussão

E. Gtr.

E. Gtr.

E. Bass

61

Percussão

E. Gtr.

E. Gtr.

E. Bass

63

Percussão

E. Gtr.

E. Gtr.

E. Bass

65

Percussão

E. Gtr.

E. Gtr.

E. Bass

Ultraje a Rigor - Nada a declarar

Percussão

♩ = 120,000000

The image displays a percussion score for a piece titled "Ultraje a Rigor - Nada a declarar". The score is written for a 4/4 time signature and a tempo of 120,000000. It consists of ten staves, each representing a different drum or percussion instrument. The notation includes various rhythmic patterns, such as eighth and sixteenth notes, and rests. Some notes are marked with an asterisk (*), indicating specific accents or effects. The score is organized into measures, with measure numbers 5, 9, 13, 17, 21, 25, 29, 33, and 37 indicated at the beginning of their respective staves. The notation is clear and detailed, providing a comprehensive guide for the percussionist.

V.S.

2

Percussão

41

45

49

53

57

61

64

Ultraje a Rigor - Nada a declarar

Electric Guitar

♩ = 120,000000

2

4

6

8

10

12

14

17

21

24

V.S.

V.S.

26

29

31

33

35

37

39

43

47

51

53



55



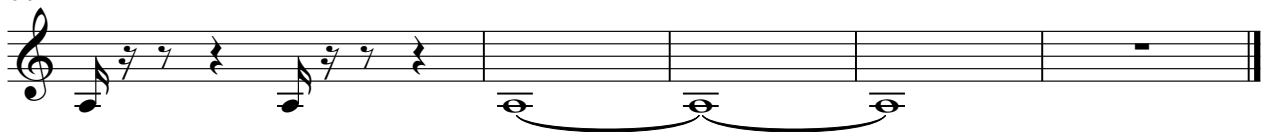
58



62



64



Ultraje a Rigor - Nada a declarar

Electric Guitar

♩ = 120,000000

2

8

14

17

19

21

23

28

34

39

Detailed description: The score is written in 4/4 time with a tempo of 120,000000. It begins with a double bar line and a '2' above it, indicating a two-measure rest. The first staff (measures 1-7) consists of chords. The second staff (measures 8-13) continues with chords. The third staff (measures 14-16) features eighth-note chords with stems pointing up. The fourth staff (measures 17-18) continues with eighth-note chords. The fifth staff (measures 19-20) features eighth-note chords with stems pointing up. The sixth staff (measures 21-22) continues with eighth-note chords. The seventh staff (measures 23-27) features eighth-note chords with stems pointing up. The eighth staff (measures 28-33) consists of chords. The ninth staff (measures 34-38) continues with chords. The tenth staff (measures 39-44) features eighth-note chords with stems pointing up.

V.S.

41



43



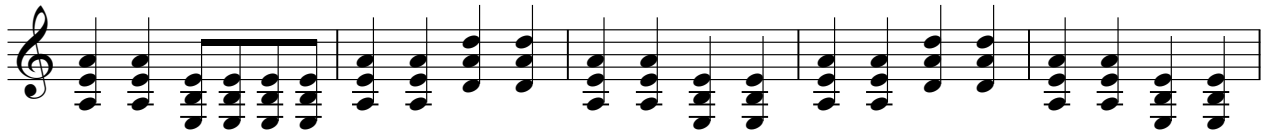
45



47



51



56



58



60



62



64



♩ = 120,000000

2

4

64

Ultraje a Rigor - Nada a declarar

Electric Bass

♩ = 120,000000

2



5



9



13



17



21



25



29



33



37



V.S.

41



45



49



53



57



61



64

