

YZA - Enter the YZA

♩ = 184,003922

Track 10

Track 3

Track 2

Track 6

Track 4

♩ = 184,003922

3

Track 10

Track 3

Track 2

Track 6

Track 4

2

5

Track 10

Track 3

Track 2

Track 6

Track 4

Detailed description: This block shows the musical notation for measures 5 and 6. Track 10 (top) is in treble clef with a key signature of one sharp (F#) and a 2/4 time signature. It features a melody with eighth notes and a slur over the first two measures. Track 3 is in treble clef and plays a rhythmic accompaniment of eighth notes. Track 2 is in bass clef and plays a steady eighth-note bass line. Track 6 is in bass clef and plays a similar eighth-note bass line. Track 4 is in treble clef and plays a rhythmic accompaniment of eighth notes with some rests.

7

Track 10

Track 3

Track 2

Track 6

Track 4

Detailed description: This block shows the musical notation for measures 7 and 8. Track 10 continues the melody from the previous block. Track 3 continues the eighth-note accompaniment. Track 2 continues the eighth-note bass line. Track 6 continues the eighth-note bass line. Track 4 continues the eighth-note accompaniment.

9

Track 10

Track 3

Track 2

Track 6

Track 5

Track 4

Detailed description: This block contains the musical notation for measures 9 through 10. Track 10 (drums) features a complex pattern of eighth and sixteenth notes with 'x' marks above the staff. Track 3 (treble clef) has a steady eighth-note accompaniment. Track 2 (bass clef) and Track 6 (bass clef) play a simple eighth-note bass line. Track 5 (treble clef) has a melodic line with eighth notes and some beamed sixteenth notes. Track 4 (treble clef) has a sparse melody with occasional rests.

11

Track 10

Track 3

Track 2

Track 6

Track 5

Track 4

Detailed description: This block contains the musical notation for measures 11 through 12. The patterns for all tracks are consistent with the previous block. Track 10 continues with its drum pattern. Track 3 maintains its eighth-note accompaniment. Track 2 and Track 6 continue with their bass lines. Track 5 continues its melodic line. Track 4 continues its sparse melody.

13

Track 10

Track 3

Track 2

Track 6

Track 5

Track 4

Detailed description: This block shows a musical score for six tracks starting at measure 13. Track 10 (drums) features a pattern of eighth notes with 'x' marks above them, indicating a specific drum sound. Track 3 (treble clef) has a complex melodic line with many sixteenth notes and a sharp sign (#) at the end of the second measure. Track 2 (bass clef) and Track 6 (bass clef) play a steady eighth-note bass line. Track 5 (treble clef) plays a similar eighth-note line. Track 4 (treble clef) has a sparse line with some rests and a '7' mark above a note.

15

Track 10

Track 3

Track 2

Track 6

Track 5

Track 4

Detailed description: This block shows a musical score for six tracks starting at measure 15. Track 10 (drums) continues the eighth-note pattern with 'x' marks. Track 3 (treble clef) continues its melodic line with sixteenth notes and a sharp sign (#). Track 2 (bass clef) and Track 6 (bass clef) continue their eighth-note bass lines. Track 5 (treble clef) continues its eighth-note line. Track 4 (treble clef) continues its sparse line with rests and a '7' mark.

17

Track 10

Track 3

Track 2

Track 6

Track 5

Track 4

Detailed description: This block contains the musical notation for measures 17 through 18. Track 10 (drums) features a complex pattern of eighth and sixteenth notes with 'x' marks above the staff. Track 3 (treble clef) has a steady eighth-note accompaniment. Track 2 (bass clef) and Track 6 (bass clef) play a simple eighth-note bass line. Track 5 (treble clef) has a melodic line with eighth notes and some beamed sixteenth notes. Track 4 (treble clef) has a sparse melody with occasional rests.

19

Track 10

Track 3

Track 2

Track 6

Track 5

Track 4

Detailed description: This block contains the musical notation for measures 19 through 20. The drum pattern in Track 10 continues. Track 3 maintains its eighth-note accompaniment. Track 2 and Track 6 continue with their eighth-note bass lines. Track 5 has a melodic line similar to the previous block. Track 4 has a sparse melody with occasional rests.

21

Track 10

Track 3

Track 2

Track 6

Track 5

Track 4

Detailed description: This block contains the musical notation for tracks 10, 3, 2, 6, 5, and 4 from measure 21 to 22. Track 10 (drums) shows a pattern of eighth notes with 'x' marks above them, indicating a specific drum sound. Track 3 (treble clef) features a complex melodic line with many sixteenth notes and a sharp sign on the final note. Track 2 (bass clef) has a steady eighth-note bass line. Track 6 (bass clef) has a similar eighth-note bass line. Track 5 (treble clef) has a melodic line with eighth notes. Track 4 (treble clef) has a bass line with some rests and eighth notes.

23

Track 10

Track 3

Track 2

Track 6

Track 5

Track 4

Detailed description: This block contains the musical notation for tracks 10, 3, 2, 6, 5, and 4 from measure 23 to 24. Track 10 (drums) continues the eighth-note pattern with 'x' marks. Track 3 (treble clef) continues the melodic line with sixteenth notes and a sharp sign. Track 2 (bass clef) continues the eighth-note bass line. Track 6 (bass clef) continues the eighth-note bass line. Track 5 (treble clef) continues the melodic line with eighth notes. Track 4 (treble clef) continues the bass line with eighth notes.

25

Track 10

Track 3

Track 2

Track 6

Track 5

Detailed description: This musical score block covers measures 25 to 26. Track 10 (drums) features a consistent pattern of snare and hi-hat hits. Track 3 (treble clef) plays a steady eighth-note accompaniment. Track 2 (bass clef) and Track 6 (bass clef) play a similar eighth-note line. Track 5 (bass clef) provides harmonic support with block chords.

27

Track 10

Track 3

Track 2

Track 6

Track 5

Detailed description: This musical score block covers measures 27 to 28. Track 10 (drums) continues with the same pattern. Track 3 (treble clef) maintains the eighth-note accompaniment. Track 2 (bass clef) and Track 6 (bass clef) play eighth-note lines with occasional rests. Track 5 (bass clef) continues with block chords.

29

Track 10

Track 3

Track 2

Track 6

Track 5

31

Track 10

Track 3

Track 2

Track 6

Track 5

33

Track 10

Track 3

Track 2

Track 6

Track 5

Detailed description: This musical score block covers measures 33 to 34. Track 10 (drums) features a consistent pattern of snare and hi-hat hits. Track 3 (treble clef) plays a continuous eighth-note melody. Track 2 (bass clef) and Track 6 (bass clef) play a similar eighth-note line. Track 5 (bass clef) provides harmonic support with block chords.

35

Track 10

Track 3

Track 2

Track 6

Track 5

Detailed description: This musical score block covers measures 35 to 36. Track 10 (drums) continues with the same pattern. Track 3 (treble clef) continues with the eighth-note melody. Track 2 (bass clef) and Track 6 (bass clef) continue with the eighth-note line, which includes some rests. Track 5 (bass clef) continues with block chords.

37

Track 10

Track 3

Track 2

Track 6

Track 5

39

Track 10

Track 3

Track 2

Track 6

Track 5

41

Track 10

Track 3

Track 2

Track 6

Track 5

Track 4

Detailed description: This block contains the musical notation for measures 41-42. Track 10 (drums) features a complex rhythmic pattern with 'x' marks above the staff. Track 3 (treble clef) has a melodic line with a sharp sign in the second measure. Tracks 2 and 6 (bass clef) play a steady eighth-note bass line. Track 5 (treble clef) plays a melodic line with eighth notes. Track 4 (treble clef) plays a bass line with some rests.

43

Track 10

Track 3

Track 2

Track 6

Track 5

Track 4

Detailed description: This block contains the musical notation for measures 43-44. Track 10 (drums) continues with its rhythmic pattern. Track 3 (treble clef) continues its melodic line. Tracks 2 and 6 (bass clef) continue with their eighth-note bass line. Track 5 (treble clef) continues its melodic line. Track 4 (treble clef) continues its bass line.

45

Track 10

Track 3

Track 2

Track 6

Track 5

Track 4

Detailed description: This block contains the musical notation for tracks 10, 3, 2, 6, 5, and 4 from measure 45 to 46. Track 10 (drums) shows a pattern of eighth notes with 'x' marks above them, indicating muted notes. Track 3 (treble clef) features a complex melodic line with many sixteenth notes and a sharp sign in the second measure. Track 2 (bass clef) and Track 6 (bass clef) play a steady eighth-note bass line. Track 5 (treble clef) plays a melodic line with eighth notes. Track 4 (treble clef) plays a bass line with eighth notes and some rests.

47

Track 10

Track 3

Track 2

Track 6

Track 5

Track 4

Detailed description: This block contains the musical notation for tracks 10, 3, 2, 6, 5, and 4 from measure 47 to 48. The notation continues from the previous block. Track 10 (drums) maintains the eighth-note pattern with 'x' marks. Track 3 (treble clef) continues its melodic line. Track 2 (bass clef) and Track 6 (bass clef) continue the eighth-note bass line. Track 5 (treble clef) continues its melodic line. Track 4 (treble clef) continues its bass line.

49

Track 10

Track 3

Track 2

Track 6

Track 5

Detailed description: This block shows a musical score for five tracks starting at measure 49. Track 10 (top) is a guitar track with a treble clef and a capo on the second fret, featuring a melodic line with slurs and accents. Track 3 is a piano accompaniment in treble clef with a steady eighth-note pattern. Track 2 and Track 6 are bass lines in bass clef, both featuring a long, sustained note with a slur. Track 5 is a piano accompaniment in treble clef with a steady eighth-note pattern.

51

Track 10

Track 3

Track 2

Track 6

Track 5

Detailed description: This block shows a musical score for five tracks starting at measure 51. The notation is identical to the previous block, with Track 10 as a guitar melody, Track 3 and Track 5 as piano accompaniment patterns, and Track 2 and Track 6 as sustained bass notes.

53

Track 10

Track 3

Track 2

Track 6

Track 5

55

Track 10

Track 3

Track 2

Track 6

Track 5

56

Track 10



Track 3



Track 2



Track 6



Track 5



Detailed description: This page contains five musical tracks. Track 10 is in treble clef with a key signature of one sharp (F#) and a 3/4 time signature. It features a melody of eighth and quarter notes with some beamed eighth notes. Track 3 is in treble clef and consists of a rhythmic accompaniment of eighth notes. Track 2 is in bass clef and contains a simple bass line with a slur over two notes. Track 6 is in bass clef and contains a simple bass line with a slur over two notes. Track 5 is in treble clef and consists of a rhythmic accompaniment of eighth notes. The page number 56 is located at the top left of the first staff.

YZA - Enter the YZA

Track 10

♩ = 184,003922

5

9

13

17

21

25

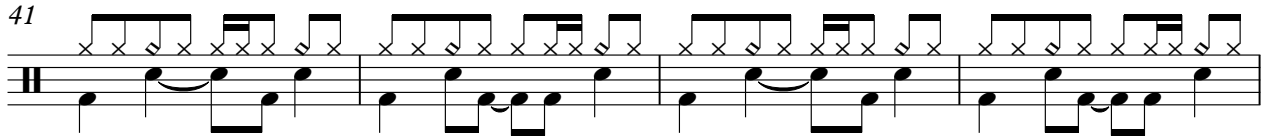
29

33

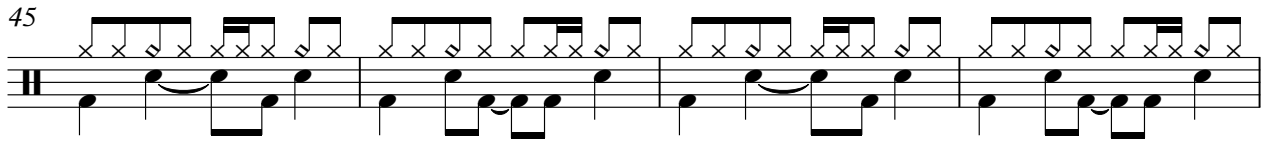
37

V.S.

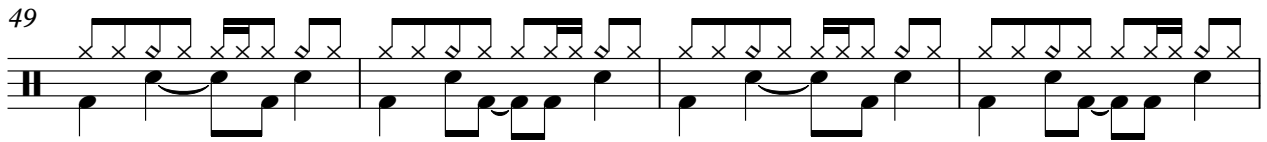
41



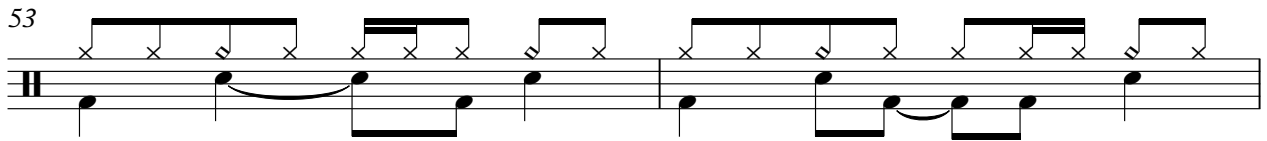
45



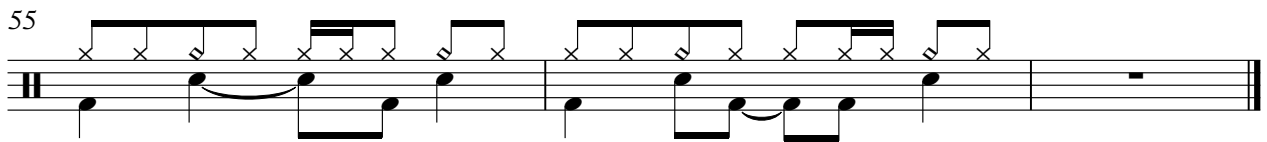
49



53



55



YZA - Enter the YZA

Track 2

♩ = 184,003922



5



9



13



17



21



25



29



33



37



V.S.

41



45



49



53



YZA - Enter the YZA

Track 6

♩ = 184,003922



5



9



13



17



21



25



29



33



37



V.S.

41



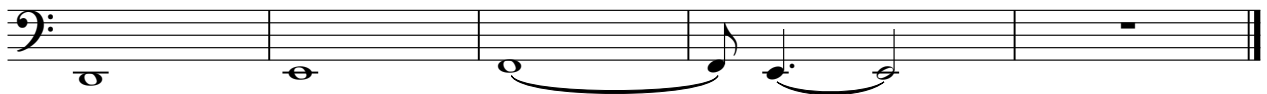
45



49



53



Track 5

YZA - Enter the YZA

♩ = 184,003922

8

11

14

16

19

22

24

V.S.

31

39

43

46

48

51

54

56

Track 4

YZA - Enter the YZA

♩ = 184,003922

