

Velasquez Pallesi - Cachito Kar By Deus

♩ = 183,000473

Melody

New Track

Bass

Chords



Melody

New Track

Hat/Cow

Snare/Tom

Kick

New Track

Bass

Chords

6

11

Melody

New Track

Hat/Cow

Snare/Tom

Kick

New Track

Bass

Chords



16

Melody

Hat/Cow

Snare/Tom

Kick

New Track

Bass

Chords

21

Melody

Hat/Cow

Snare/Tom

Kick

New Track

Bass

Chords



26

Melody

Hat/Cow

Snare/Tom

Kick

New Track

Bass

Chords

31

Melody

Hat/Cow

Snare/Tom

Kick

New Track

Bass

Chords



36

Melody

Hat/Cow

Snare/Tom

Kick

New Track

Bass

Chords

41

Melody

Melody: Treble clef, 4/4 time. Measures 1-4: quarter notes G4, A4, B4, C5. Measure 5: quarter note C5, quarter rest. Measure 6: quarter notes G4, A4, B4, C5. Measure 7: quarter notes G4, A4, B4, C5.

New Track: Treble clef, 4/4 time. Measures 1-4: whole rest. Measure 5: quarter notes G4, A4, B4, C5. Measure 6: quarter notes G4, A4, B4, C5. Measure 7: quarter notes G4, A4, B4, C5.

Hat/Cow

Hat/Cow: Percussion clef, 4/4 time. Measures 1-4: quarter notes with 'x' above. Measure 5: quarter note with 'x' above, quarter rest. Measure 6: quarter notes with 'x' above. Measure 7: quarter notes with 'x' above.

Snare/Tom

Snare/Tom: Percussion clef, 4/4 time. Measures 1-2: eighth notes G4, A4, B4, C5. Measure 3: quarter note G4, quarter note A4. Measure 4: quarter note B4, quarter note C5. Measure 5: quarter rest, quarter note G4. Measure 6: eighth notes G4, A4, B4, C5. Measure 7: eighth notes G4, A4, B4, C5.

Kick

Kick: Percussion clef, 4/4 time. Measures 1-4: quarter notes G2, A2, B2, C3. Measure 5: quarter note G2, quarter note A2. Measure 6: quarter note B2, quarter note C3. Measure 7: quarter notes G2, A2, B2, C3.

New Track

New Track: Treble clef, 4/4 time. Measures 1-4: whole rest. Measure 5: quarter notes G4, A4, B4, C5. Measure 6: quarter notes G4, A4, B4, C5. Measure 7: quarter notes G4, A4, B4, C5.

Bass

Bass: Bass clef, 4/4 time. Measures 1-4: whole rest. Measure 5: quarter notes G2, A2, B2, C3. Measure 6: quarter notes G2, A2, B2, C3. Measure 7: quarter notes G2, A2, B2, C3.

Chords

Chords: Treble clef, 4/4 time. Measures 1-4: whole rest. Measure 5: quarter notes G4, A4, B4, C5. Measure 6: quarter notes G4, A4, B4, C5. Measure 7: quarter notes G4, A4, B4, C5.

46

Melody

Melody and New Track tracks. Both tracks contain identical musical notation in treble clef. The notation consists of five measures: Measure 1: quarter notes G4, A4, B4, quarter rest; Measure 2: quarter notes G4, A4, B4, quarter rest; Measure 3: quarter notes G4, A4, B4, quarter rest; Measure 4: quarter notes G4, A4, B4, quarter rest; Measure 5: quarter notes G4, A4, B4, quarter rest.

Hat/Cow

Hat/Cow track. Musical notation in percussion clef showing a steady eighth-note pattern of 'x' marks across five measures.

Snare/Tom

Snare/Tom track. Musical notation in percussion clef showing a pattern of quarter notes and eighth notes across five measures.

Kick

Kick track. Musical notation in percussion clef showing a steady eighth-note pattern across five measures.

New Track

New Track (Guitar) track. Musical notation in treble clef showing chords and rests across five measures.

Bass

Bass track. Musical notation in bass clef showing a steady eighth-note pattern across five measures.

Chords

Chords track. Musical notation in treble clef showing chords and rests across five measures.

51

Melody

New Track

Hat/Cow

Snare/Tom

Kick

New Track

Bass

Chords

Detailed description: This is a multi-track musical score for a drum set and guitar. It consists of eight staves. The top two staves, 'Melody' and 'New Track', are in treble clef and contain identical melodic lines. The next three staves are for the drum set: 'Hat/Cow' (top staff, treble clef) uses 'x' marks for hats and circles for cowbells; 'Snare/Tom' (middle staff, alto clef) shows snare and tom patterns; 'Kick' (bottom staff, alto clef) shows the kick drum pattern. The bottom three staves are for guitar: 'New Track' (top staff, treble clef) shows chordal accompaniment; 'Bass' (middle staff, bass clef) shows the bass line; and 'Chords' (bottom staff, treble clef) shows the chord progression. The score is divided into five measures by vertical bar lines.

56

Melody

Melody and New Track tracks. Both tracks contain identical musical notation in treble clef. The notation consists of five measures: Measure 1: quarter notes G4, A4, B4, C5; Measure 2: quarter notes D5, quarter rest, eighth notes E5, F5, G5, quarter note E5; Measure 3: quarter notes D5, C5, B4, A4; Measure 4: quarter notes G4, eighth notes F4, E4, quarter note D4; Measure 5: quarter note C4, quarter rest, quarter rest, quarter note B3.

New Track

Hat/Cow

Hat/Cow track. Musical notation in percussion clef (C-clef) showing a sequence of 'x' marks on a five-line staff, representing hits. The pattern is: x x x x | x x x x | x x x x | x x x x | x x x x.

Snare/Tom

Snare/Tom track. Musical notation in percussion clef (C-clef) showing notes on a five-line staff. The pattern is: quarter rest, quarter note G4, eighth notes G4, A4, quarter note G4 | quarter rest, quarter note G4, eighth notes G4, A4, quarter note G4 | quarter notes G4, A4, B4, eighth notes G4, A4, quarter note G4 | quarter rest, quarter note G4, eighth notes G4, A4, quarter note G4 | quarter rest, quarter rest, quarter note G4, eighth notes G4, A4, quarter note G4.

Kick

Kick track. Musical notation in percussion clef (C-clef) showing notes on a five-line staff. The pattern is: quarter note G2, eighth notes G2, A2, quarter note G2 | quarter note G2, eighth notes G2, A2, quarter note G2 | quarter notes G2, A2, B2, eighth notes G2, A2, quarter note G2 | quarter note G2, eighth notes G2, A2, quarter note G2 | quarter note G2, eighth notes G2, A2, quarter note G2.

New Track

New Track (Chords) track. Musical notation in treble clef showing chords on a five-line staff. The pattern is: chord G4, quarter note A4, chord G4, quarter note A4 | quarter rest | chord G4, quarter note A4, chord G4, quarter note A4 | quarter rest | chord G4, quarter note A4, quarter rest, quarter note A4, chord G4, quarter note A4.

Bass

Bass track. Musical notation in bass clef showing notes on a five-line staff. The pattern is: quarter note G2, eighth notes G2, A2, quarter note G2 | quarter note G2, eighth notes G2, A2, quarter note G2 | quarter note G2, eighth notes G2, A2, quarter note G2 | quarter note G2, eighth notes G2, A2, quarter note G2 | quarter note G2, quarter rest, quarter rest, quarter note A2.

Chords

Chords track. Musical notation in treble clef showing chords on a five-line staff. The pattern is: chord G4, quarter note A4, chord G4, quarter note A4 | quarter rest | chord G4, quarter note A4, chord G4, quarter note A4 | quarter rest | chord G4, quarter note A4, quarter rest, quarter note A4, chord G4, quarter note A4.

61

Melody

Melody and New Track (top two staves) musical notation. Both staves use a treble clef and contain identical rhythmic patterns of eighth and quarter notes.

New Track

Hat/Cow

Hat/Cow, Snare/Tom, and Kick (middle three staves) musical notation. Hat/Cow uses a snare drum clef with 'x' marks for notes. Snare/Tom and Kick also use snare drum clefs with standard note heads.

Snare/Tom

Kick

New Track

New Track (guitar) musical notation. Treble clef staff showing chords and rests.

Bass

Bass musical notation. Bass clef staff showing a rhythmic pattern of eighth and quarter notes.

Chords

Chords musical notation. Treble clef staff showing chord symbols and rests.

66

Melody

New Track

Hat/Cow

Snare/Tom

Kick

New Track

Bass

Chords

The image displays a musical score for tracks 66 through 70. The score is organized into eight staves, each with a specific instrument or part label on the left. The top two staves, 'Melody' and 'New Track', are written in treble clef. The 'Hat/Cow' staff uses a drum set notation with 'x' marks for hats and vertical lines for cowbells. The 'Snare/Tom' and 'Kick' staves also use drum set notation with vertical lines and beams. The bottom three staves, 'New Track', 'Bass', and 'Chords', are written in treble clef. The 'New Track' at the bottom is a chordal part. The score is divided into five measures by vertical bar lines. The first measure of each staff shows the beginning of the track, with measure numbers 66, 67, 68, 69, and 70 indicated at the top of the first measure.

71

Melody

Melody track notation for measures 71-75. The staff uses a treble clef and contains a sequence of eighth and quarter notes with rests.

New Track

New Track notation for measures 71-75, identical to the Melody track.

Hat/Cow

Hat/Cow track notation for measures 71-75, consisting of a series of 'x' marks on a staff with a double bar line, indicating a steady rhythmic pattern.

Snare/Tom

Snare/Tom track notation for measures 71-75, showing a rhythmic pattern of quarter notes and eighth notes on a staff with a double bar line.

Kick

Kick track notation for measures 71-75, showing a rhythmic pattern of quarter notes on a staff with a double bar line.

New Track

New Track notation for measures 71-75, featuring a treble clef and a sequence of chords and rests.

Bass

Bass track notation for measures 71-75, using a bass clef and showing a rhythmic pattern of eighth and quarter notes.

Chords

Chords track notation for measures 71-75, using a treble clef and showing a sequence of chords and rests.

76

Melody

Melody and New Track tracks. Both tracks show a sequence of notes in the first measure, followed by rests in the subsequent three measures.

New Track

Hat/Cow

Hat/Cow track. Shows a rhythmic pattern of 'x' marks on a staff, indicating hits for a hat or cowbell.

Snare/Tom

Snare/Tom track. Shows a rhythmic pattern of notes and rests on a staff, representing snare and tom hits.

Kick

Kick track. Shows a rhythmic pattern of notes and rests on a staff, representing kick drum hits.

New Track

New Track (Guitar). Shows a sequence of notes and chords on a staff, representing a guitar part.

Bass

Bass track. Shows a sequence of notes on a bass staff, representing the bass line.

Chords

Chords track. Shows a sequence of chords and notes on a staff, representing the chord progression.

Velasquez Pallesi - Cachito Kar By Deus

Melody

$\text{♩} = 183,000473$

4

9

15

21

26

32

38

44

49

54

V.S.

2

Melody

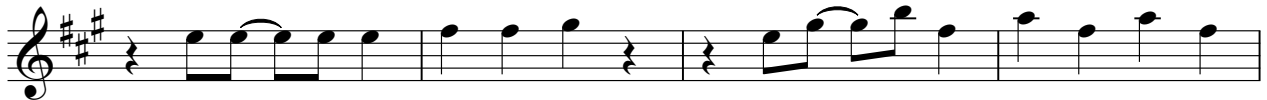
59



64



69



73



♩ = 183,000473

9 32

45

50

55

60

65

70

74 3

Velasquez Pallesi - Cachito Kar By Deus

Hat/Cow

♩ = 183,000473

5



10



16



22



28



34



40



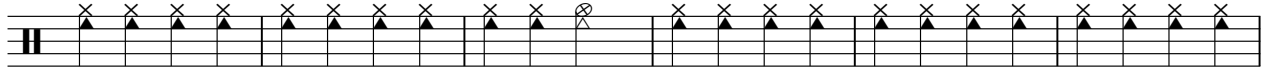
46



52



58



V.S.

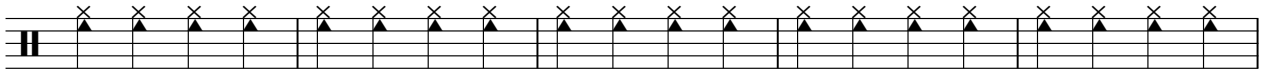
2

Hat/Cow

64



70



75



Velasquez Pallesi - Cachito Kar By Deus

Snare/Tom

♩ = 183,000473

5



10



15



20



25



30



35



40



45



50



V.S.

2

Snare/Tom

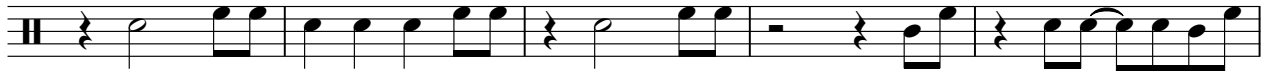
55



60



65



70



75



Velasquez Pallesi - Cachito Kar By Deus

Kick

♩ = 183,000473

5



10



15



20



25



30



35



40



46



51



V.S.

2

Kick

56



Velasquez Palesi - Cachito Kar By Deus

New Track

♩ = 183,000473

6

13

20

27

34

39

45

52

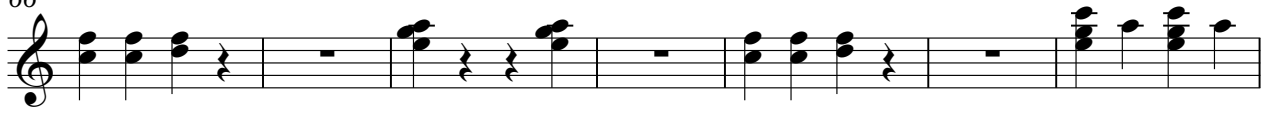
59

Detailed description: This is a guitar score for the piece 'Cachito Kar' by Deus. It is written in 4/4 time with a tempo of 183,000473. The score consists of ten staves of music. The first staff begins with a series of chords and a melodic line. The subsequent staves (6, 13, 20, 27, 34, 39, 45, 52, 59) continue the piece with various chordal textures and melodic fragments. The notation includes chords, single notes, and rests, typical of a guitar score. The key signature is one sharp (F#), and the time signature is 4/4.

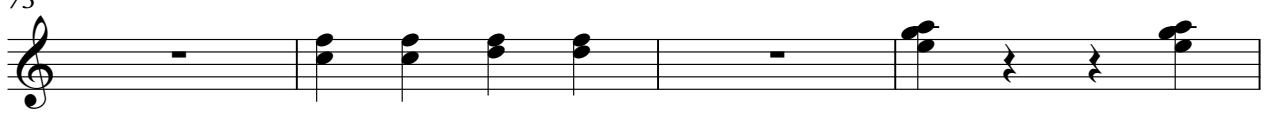
2

New Track

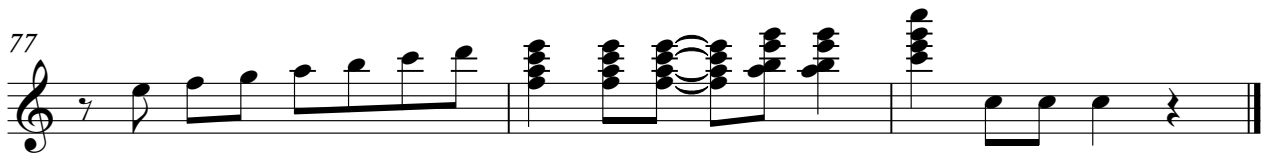
66



73



77



2

Bass

54



60



66



72



76



Velasquez Pallesi - Cachito Kar By Deus

Chords

♩ = 183,000473

6

13

20

27

34

39

45

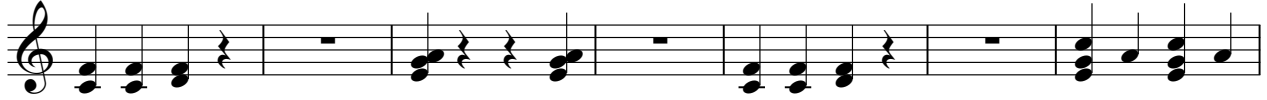
52

59

2

Chords

66



73



77

