

Vol 23456 Vol 2 - 7SECONDS

0.0"
1.1.00
© 1991 Sammler-Verlag
Neneh Cherry: 7 Seconds (GM)

♩ = 158,000351

Musical score for the first system, measures 1-5. The score includes parts for CUP panpot, HH-CLOSED, KICK, SNARE 1, SNARE 2, TAMB, Bass, Choir aahs, and Voice oohs. The tempo is marked as ♩ = 158,000351.



Musical score for the second system, measures 6-9. The score includes parts for Sax, CUP panpot, HH-CLOSED, KICK, SNARE 1, CRASH CYMBAL, SNARE 2, TAMB, Bass, and Choir aahs. The tempo is marked as ♩ = 158,000351.

10

Sax

CUP panpot

HH-CLOSED

KICK

SNARE 1

SNARE 2

TAMB

Bass

Choir aahs



15

Sax

CUP panpot

HH-CLOSED

KICK

SNARE 1

SNARE 2

TAMB

Bass

Choir aahs

Voice oohs

20

Sax

CUP panpot

HH-CLOSED

KICK

SNARE 1

SNARE 2

TAMB

Bass

Choir aahs



25

Sax

CUP panpot

HH-CLOSED

KICK

SNARE 1

SNARE 2

TAMB

Bass

Choir aahs

29

Sax

CUP panpot

HH-CLOSED

KICK

SNARE 1

TOMS

SNARE 2

TAMB

Bass

Choir aahs

Voice oohs



34

Sax

CUP panpot

HH-CLOSED

KICK

SNARE 1

SNARE 2

TAMB

Bass

Voice oohs

39

Sax

CUP panpot

HH-CLOSED

KICK

SNARE 1

CRASH CYMBAL

SNARE 2

TAMB

Bass

Brass

Voice oohs



43

Sax

CUP panpot

HH-CLOSED

KICK

SNARE 1

SNARE 2

TAMB

Bass

Brass

Voice oohs

48

Sax

CUP panpot

HH-CLOSED

KICK

SNARE 1

SNARE 2

TAMB

Bass

Brass

Voice oohs



53

Sax

CUP panpot

HH-CLOSED

KICK

SNARE 1

SNARE 2

TAMB

Bass

Choir aahs

Brass

Voice oohs

58

Sax

CUP panpot

HH-CLOSED

KICK

SNARE 1

SNARE 2

TAMB

Bass

Choir aahs

Brass

Detailed description: This musical score block covers measures 58 to 62. It features nine staves: Saxophone (melodic line with a key signature change to one sharp), CUP panpot (hi-hat pattern), HH-CLOSED (closed hi-hat pattern), KICK (quarter notes), SNARE 1 (half notes), SNARE 2 (half notes), TAMB (quarter notes), Bass (bass line with a key signature change to one sharp), Choir aahs (vocal line), and Brass (melodic line). The tempo is marked with a '7' in the top right corner.



63

Sax

CUP panpot

HH-CLOSED

KICK

SNARE 1

SNARE 2

TAMB

Bass

Choir aahs

Detailed description: This musical score block covers measures 63 to 67. It features the same nine staves as the previous block. The Saxophone part has a more complex melodic line with triplets and sixteenth notes. The Bass part also has a more active line with eighth notes and triplets. The Choir aahs part continues with vocalizations. The tempo is marked with a '7' in the top right corner.

68

Sax

CUP panpot

HH-CLOSED

KICK

SNARE 1

SNARE 2

TAMB

Bass

Choir aahs



73

Sax

CUP panpot

HH-CLOSED

KICK

SNARE 1

SNARE 2

TAMB

Bass

Choir aahs

Voice oohs

77

Sax

CUP panpot

HH-CLOSED

KICK

SNARE 1

SNARE 2

TAMB

Bass

Choir aahs



81

Sax

CUP panpot

HH-CLOSED

KICK

SNARE 1

SNARE 2

TAMB

Bass

Choir aahs

85

Sax

CUP panpot

HH-CLOSED

KICK

SNARE 1

CRASH CYMBAL

SNARE 2

TAMB

Bass

Choir aahs

6 6

3



89

Sax

CUP panpot

HH-CLOSED

KICK

SNARE 1

SNARE 2

TAMB

Bass

Brass

Voice oohs

94

Sax

CUP panpot

HH-CLOSED

KICK

SNARE 1

SNARE 2

TAMB

Bass

Brass

Voice oohs

Detailed description: This block contains the musical score for measures 94 through 98. The score is arranged in a grand staff format with ten staves. The top staff is for Saxophone, followed by CUP panpot, HH-CLOSED (Hi-Hat Closed), KICK, SNARE 1, SNARE 2, TAMB (Tambourine), Bass, Brass, and Voice oohs. The key signature has one sharp (F#) and the time signature is 4/4. The saxophone and brass parts play a melodic line with eighth and quarter notes. The percussion parts include a steady eighth-note tambourine pattern, a kick drum pattern of quarter notes, and snare drums playing half notes. The voice oohs part consists of sustained chords and melodic lines.



99

Sax

CUP panpot

HH-CLOSED

KICK

SNARE 1

SNARE 2

TAMB

Bass

Brass

Voice oohs

Detailed description: This block contains the musical score for measures 99 through 103. The instrumentation and key signature remain the same as in the previous block. The saxophone and brass parts continue their melodic lines. The percussion parts maintain their patterns: tambourine with eighth notes, kick drum with quarter notes, and snare drums with half notes. The voice oohs part continues with sustained chords and melodic lines.

104

Sax

HH-CLOSED

KICK

SNARE 1

SNARE 2

TAMB

Bass

Choir aahs

Brass

Voice oohs

109

Sax

CUP panpot

HH-CLOSED

KICK

SNARE 1

TOMS

SNARE 2

TAMB

Bass

Choir aahs

Brass

Voice oohs

The image shows a musical score for a band performance, spanning measures 104 to 109. The score is divided into two systems by a double bar line. The first system (measures 104-108) includes parts for Saxophone, HH-CLOSED, KICK, SNARE 1, SNARE 2, TAMB, Bass, Choir aahs, Brass, and Voice oohs. The second system (measures 109-113) includes parts for Saxophone, CUP panpot, HH-CLOSED, KICK, SNARE 1, TOMS, SNARE 2, TAMB, Bass, Choir aahs, Brass, and Voice oohs. The music is written in a key with one sharp (F#) and a 4/4 time signature. The saxophone and brass parts feature melodic lines with slurs and accents. The drum parts provide a steady rhythmic accompaniment, with the kick drum playing a consistent pattern and the snare and tambourine providing texture. The bass line is a simple, rhythmic accompaniment. The vocal parts consist of 'aahs' and 'oohs'.

114

Sax

CUP panpot

HH-CLOSED

KICK

SNARE 1

SNARE 2

TAMB

Bass

Voice oohs

Detailed description: This musical score covers measures 114 to 118. The Saxophone part (top) features a melodic line with a sharp key signature and a 7/8 time signature. The percussion section includes CUP panpot, HH-CLOSED, KICK, SNARE 1, SNARE 2, and TAMB. The Bass line is in the bass clef, and the Voice oohs part is in the treble clef with sustained notes.



119

Sax

CUP panpot

HH-CLOSED

KICK

SNARE 2

TAMB

Bass

Brass

Voice oohs

Detailed description: This musical score covers measures 119 to 123. The Saxophone part (top) has a melodic line. The percussion section includes CUP panpot, HH-CLOSED, KICK, SNARE 2, and TAMB. The Bass line is in the bass clef, and the Brass and Voice oohs parts are in the treble clef.

124 $\text{♩} = 158,000351$

Sax
CUP panpot
HH-CLOSED
KICK
SNARE 2
TAMB
Bass
Brass
Voice oohs



129 $\text{♩} = 158,000351$

Sax
CUP panpot
KICK
SNARE 1
SNARE 2
TAMB
Bass
Brass
Voice oohs

133

Sax

CUP panpot

KICK

SNARE 1

SNARE 2

TAMB

Bass

Brass

Voice oohs



138

Sax

CUP panpot

HH-CLOSED

KICK

SNARE 1

SNARE 2

TAMB

Bass

Brass

Voice oohs

143

Sax

CUP panpot

HH-CLOSED

KICK

SNARE 1

SNARE 2

TAMB

Bass

Brass

Voice oohs



148

Sax

CUP panpot

HH-CLOSED

KICK

SNARE 1

SNARE 2

TAMB

Bass

Brass

Voice oohs

153

Sax

CUP panpot

HH-CLOSED

KICK

SNARE 1

SNARE 2

TAMB

Bass

Brass

Voice oohs

Detailed description: This block contains the musical score for measures 153 through 156. The score is arranged in a grand staff format with ten staves. The top staff is for Saxophone, followed by CUP panpot, HH-CLOSED (Hi-Hat Closed), KICK, SNARE 1, SNARE 2, TAMB (Tambourine), Bass, Brass, and Voice oohs. The key signature has one sharp (F#). The Saxophone and Brass parts play a melodic line with eighth and quarter notes. The CUP panpot plays a rhythmic pattern of eighth notes. HH-CLOSED has a steady eighth-note pattern. KICK plays a simple quarter-note bass line. SNARE 1 and SNARE 2 play a pattern of quarter notes. TAMB plays a rhythmic pattern of eighth notes. The Bass part plays a simple quarter-note bass line. The Voice oohs part features a vocal line with sustained notes and some melodic movement.



157

Sax

HH-CLOSED

KICK

SNARE 1

SNARE 2

TAMB

Bass

Brass

Voice oohs

Detailed description: This block contains the musical score for measures 157 through 160. The score is arranged in a grand staff format with ten staves. The top staff is for Saxophone, followed by HH-CLOSED, KICK, SNARE 1, SNARE 2, TAMB, Bass, Brass, and Voice oohs. The key signature has one sharp (F#). The Saxophone and Brass parts play a melodic line with eighth and quarter notes. HH-CLOSED has a steady eighth-note pattern. KICK plays a simple quarter-note bass line. SNARE 1 and SNARE 2 play a pattern of quarter notes. TAMB plays a rhythmic pattern of eighth notes. The Bass part plays a simple quarter-note bass line. The Voice oohs part features a vocal line with sustained notes and some melodic movement.

Vol 23456 Vol 2 - 7SECONDS

Sax

♩ = 158,000351

8

13

18

23

26

29

33

39

44

49

V.S.

Sax

Musical score for Saxophone, measures 54-90. The score is written in treble clef with a key signature of two sharps (F# and C#). The music features various rhythmic patterns, including eighth and sixteenth notes, and rests. Measure numbers 54, 60, 66, 69, 73, 76, 80, 83, 86, and 90 are indicated at the start of their respective staves. There are two dynamic markings: a '2' above the staff at measure 54 and a '3' above the staff at measure 60. There are also three triplet markings, each consisting of a bracket with the number '3' underneath, located at measures 66, 69, and 86. The notation includes slurs, ties, and various accidentals (sharps and naturals).

95

100

105

113

119

127

131

136

140

4

145

Sax

150

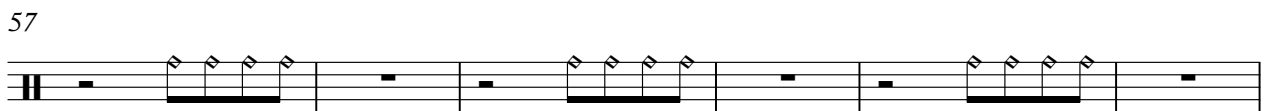
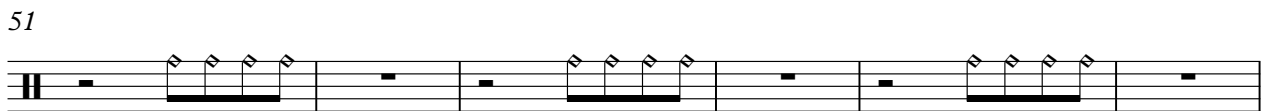
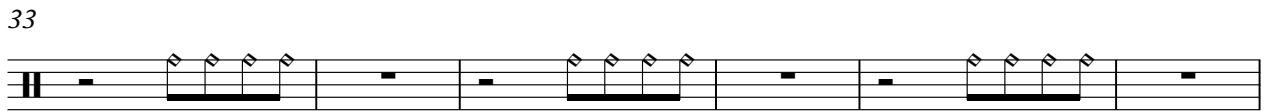
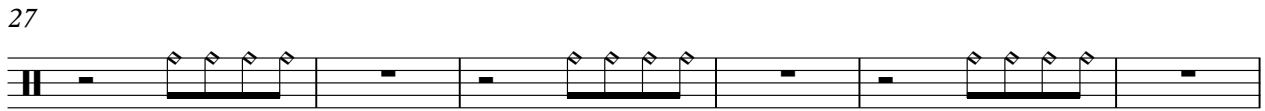
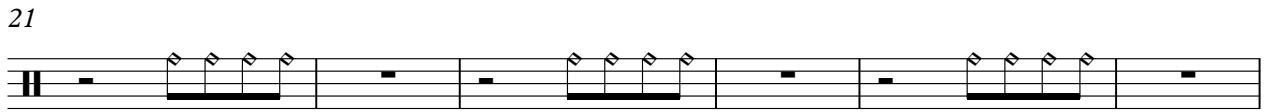
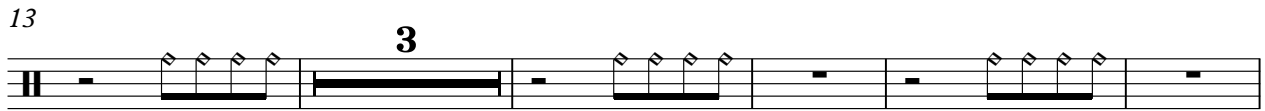
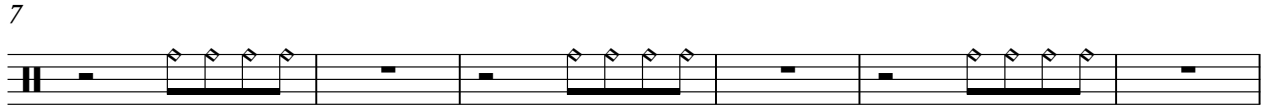
155

158

CUP panpot

Vol 23456 Vol 2 - 7SECONDS

♩ = 158,000351



2

CUP panpot

63



69



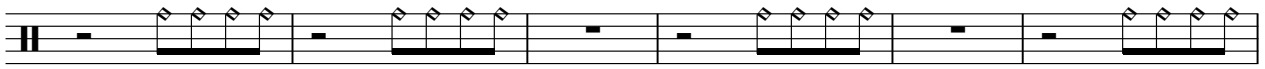
76



82



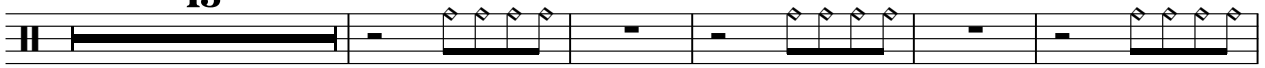
88



94



100



118



125

$\text{♩} = 158,000351$

$\text{♩} = 158,000351$



131



CUP panpot

3

137



147



152



HH-CLOSED

Vol 23456 Vol 2 - 7SECONDS

♩ = 158,000351

4/4

A guitar staff with a 4/4 time signature. The staff contains 16 eighth notes, each marked with an 'x' above it, indicating a closed hi-hat sound. The notes are grouped into four measures of four notes each.

7

A guitar staff containing 16 eighth notes, each marked with an 'x' above it. The notes are grouped into four measures of four notes each.

13

A guitar staff containing 16 eighth notes, each marked with an 'x' above it. The notes are grouped into four measures of four notes each.

19

A guitar staff containing 16 eighth notes, each marked with an 'x' above it. The notes are grouped into four measures of four notes each.

25

A guitar staff containing 16 eighth notes, each marked with an 'x' above it. The notes are grouped into four measures of four notes each.

31

A guitar staff containing 16 eighth notes, each marked with an 'x' above it. The notes are grouped into four measures of four notes each.

37

A guitar staff containing 16 eighth notes, each marked with an 'x' above it. The notes are grouped into four measures of four notes each.

43

A guitar staff containing 16 eighth notes, each marked with an 'x' above it. The notes are grouped into four measures of four notes each.

49

A guitar staff containing 16 eighth notes, each marked with an 'x' above it. The notes are grouped into four measures of four notes each.

55

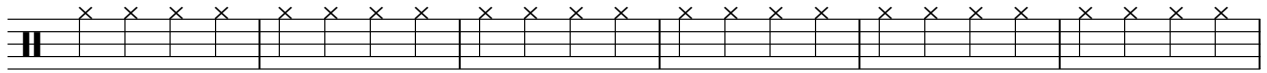
A guitar staff containing 16 eighth notes, each marked with an 'x' above it. The notes are grouped into four measures of four notes each.

V.S.

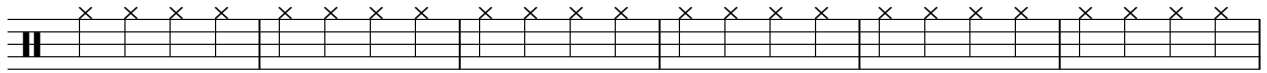
61



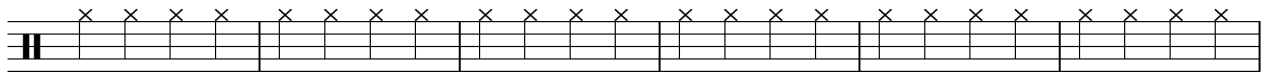
67



73



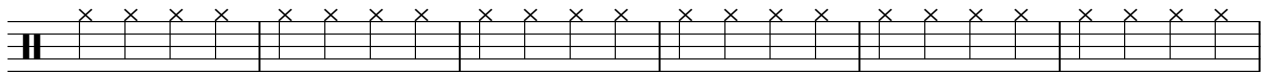
79



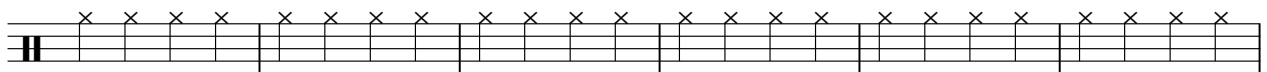
85



91



97



103



109



115

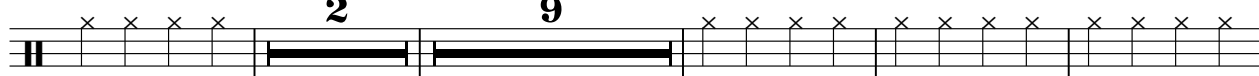


121



127

♩ = 158,000351 ♩ = 158,000351



142



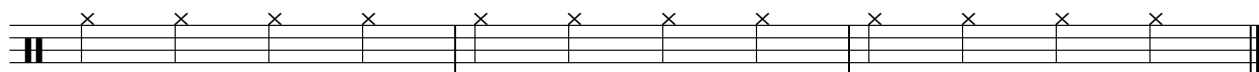
148



154



158



KICK

Vol 23456 Vol 2 - 7SECONDS

♩ = 158,000351



6



12



18



24



30



36



42



48



54



V.S.

2

KICK

60



66



72



78



84



90



96



102



108



114



KICK

120



126

♩ = 158,000351

♩ = 158,000351



132



138



144



150



156



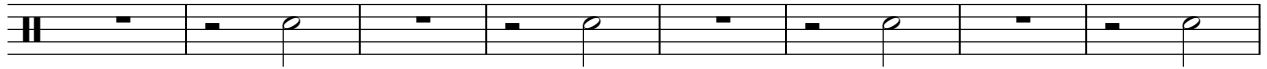
Vol 23456 Vol 2 - 7SECONDS

SNARE 1

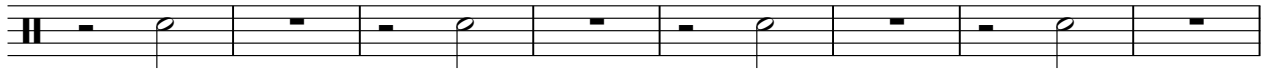
♩ = 158,000351



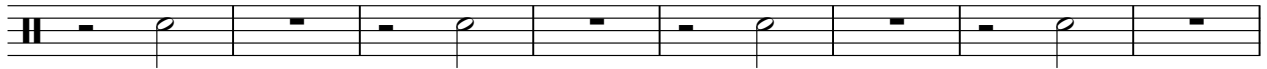
9



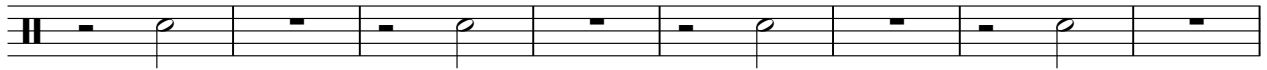
17



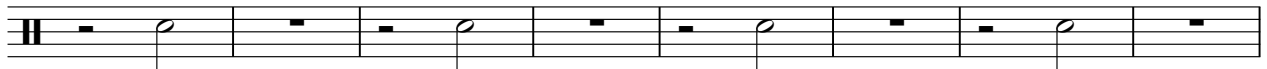
25



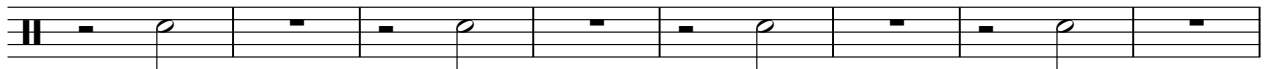
33



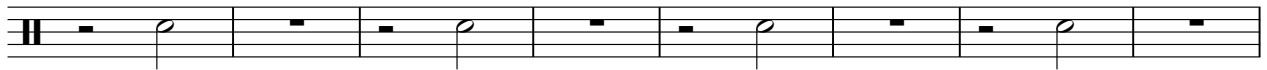
41



49



57



65



74



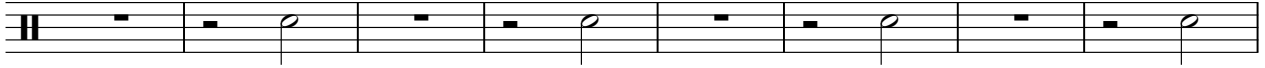
2

SNARE 1

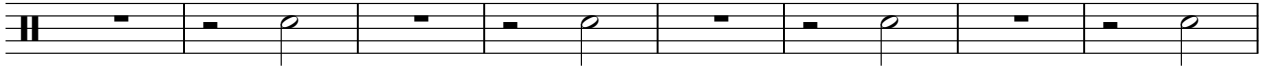
82



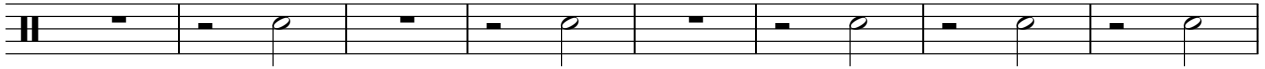
90



98



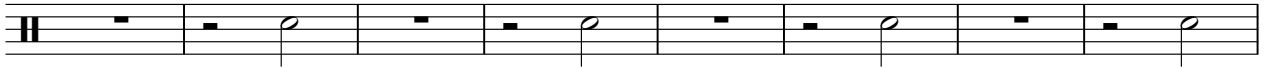
106



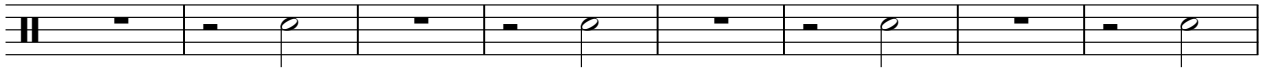
114



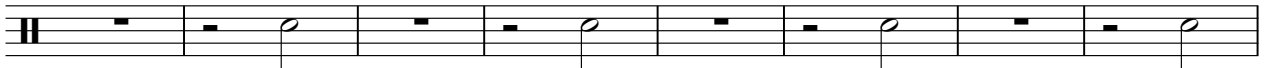
130 $\text{♩} = 158,000351$



138



146



154



CRASH CYMBAL

Vol 23456 Vol 2 - 7SECONDS

♩ = 158,000351

7

31

6 **6**

Detailed description: This musical staff is in 4/4 time. It begins with a 7-measure rest, indicated by a thick black bar and the number '7'. This is followed by two rhythmic patterns, each lasting 6 measures. Each pattern consists of a 3-measure rest followed by a 3-measure sequence of eighth notes, each marked with an asterisk (*). The staff concludes with a 31-measure rest, indicated by a thick black bar and the number '31'.

40

47

6 **6**

Detailed description: This musical staff starts with a 40-measure rest, indicated by a thick black bar and the number '40'. It then features two rhythmic patterns, each 6 measures long. Each pattern consists of a 3-measure rest followed by a 3-measure sequence of eighth notes, each marked with an asterisk (*). The staff ends with a 47-measure rest, indicated by a thick black bar and the number '47'.

88

38

6 **6**

Detailed description: This musical staff begins with an 88-measure rest, indicated by a thick black bar and the number '88'. It contains two rhythmic patterns, each 6 measures long. Each pattern consists of a 3-measure rest followed by a 3-measure sequence of eighth notes, each marked with an asterisk (*). The staff concludes with a 38-measure rest, indicated by a thick black bar and the number '38'.

127

♩ = 158,000351

3

31

Detailed description: This musical staff starts with a 127-measure rest, indicated by a thick black bar and the number '127'. It then has a 3-measure rest, indicated by a thick black bar and the number '3'. This is followed by a 31-measure rest, indicated by a thick black bar and the number '31'. Above the staff, the tempo marking '♩ = 158,000351' is present.

TOMS

Vol 23456 Vol 2 - 7SECONDS

♩ = 158,000351

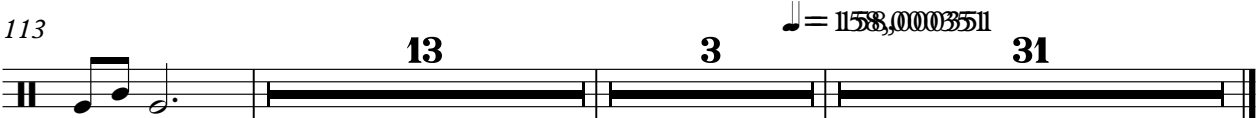
32 **79**



113

13 **3** **31**

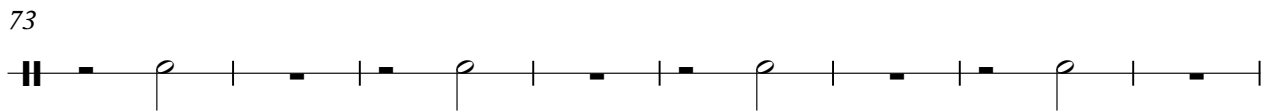
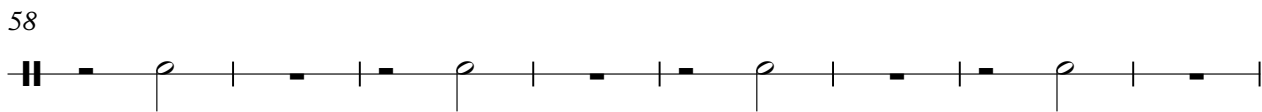
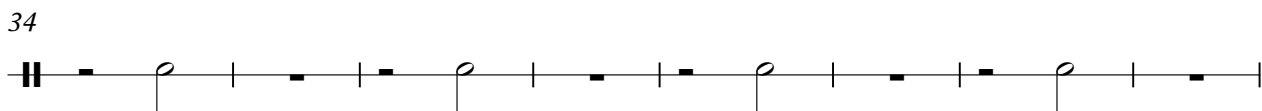
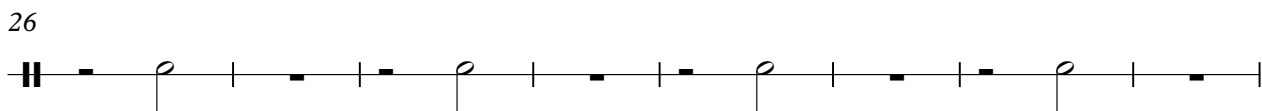
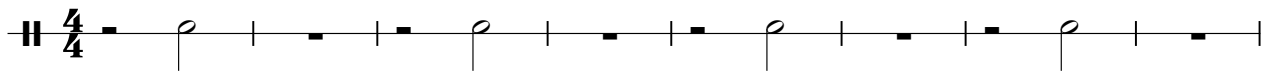
♩ = 158,000351



SNARE 2

Vol 23456 Vol 2 - 7SECONDS

♩ = 158,000351



TAMB

Vol 23456 Vol 2 - 7SECONDS

♩ = 158,000351

4

6

11

16

21

26

31

36

41

46

V.S.

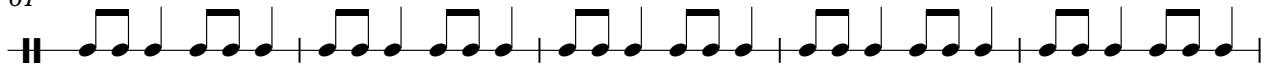
51



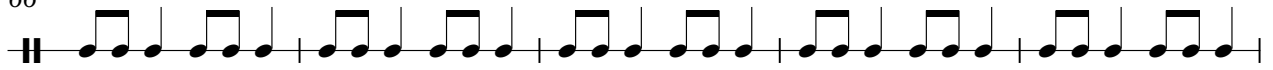
56



61



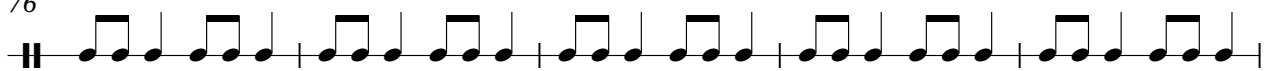
66



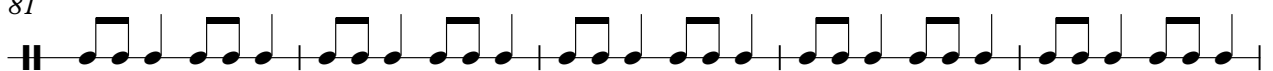
71



76



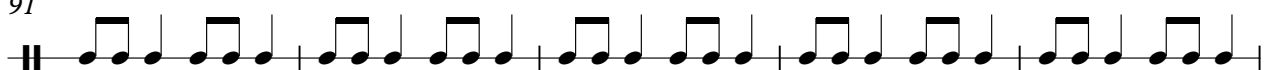
81



86



91



96



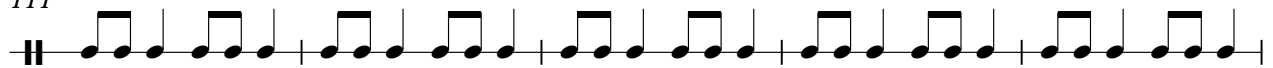
101



106



111



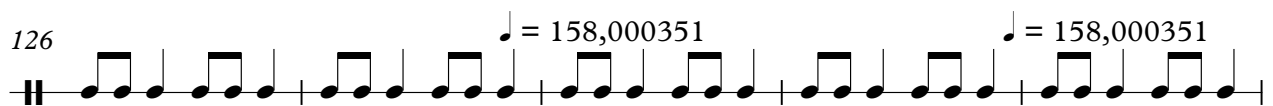
116



121



126



131



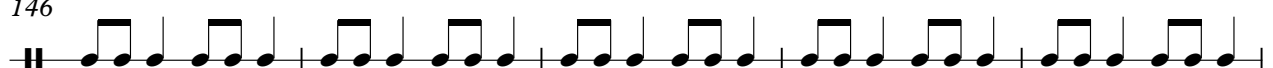
136



141



146



4

TAMB

151



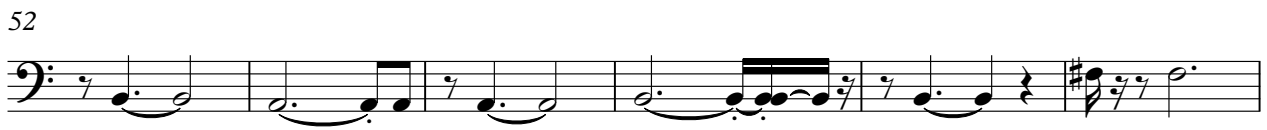
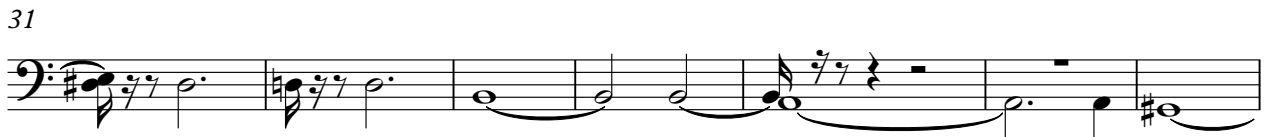
156



Vol 23456 Vol 2 - 7SECONDS

Bass

♩ = 158,000351

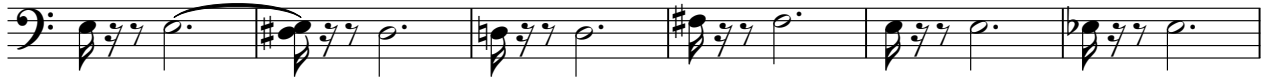


V.S.

64



70



76



82



88



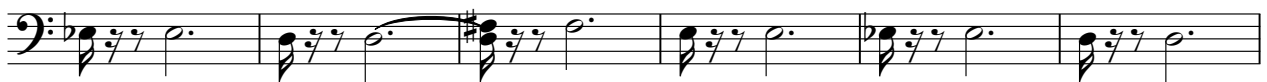
94



101



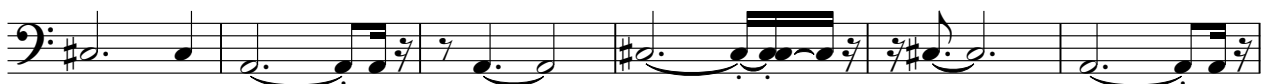
107



113



120



126

♩ = 158,000351

♩ = 158,000351



132



138



144



150



156

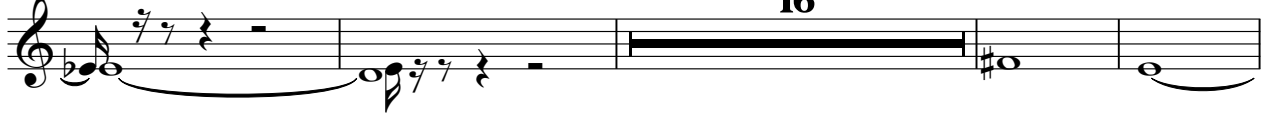


2

Choir aahs

87

16



107



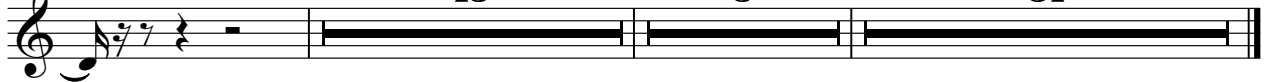
113

13

3

♩ = 158,000351

31



Vol 23456 Vol 2 - 7SECONDS

Brass

♩ = 158,000351

40

44

49

54

60

90

95

100

2

27

V.S.

105

2 9

119

3

126

♩ = 158,000351 ♩ = 158,000351

132

137

142

147

152

156



Voice oohs

♩ = 158,000351

15 15

33

40

46

52

57 15 15

89

96

102 7

113

120

126

♩ = 158,000351 ♩ = 158,000351

132

138

143

150

156