

Vol 23456 Vol 3 - THESIGN

♩ = 97,999985

Ocarina

Whistle

Drums

Melody

Piano

Bass

Strings

♩ = 97,999985



Drums

3

9

Ocarina

Drums

Melody

Piano

Bass

Detailed description: This block contains the musical notation for measures 9 and 10. It features five staves: Ocarina (treble clef), Drums (percussion clef), Melody (treble clef), Piano (treble clef), and Bass (bass clef). Measure 9 starts with a treble clef and a key signature of one flat. The Ocarina part has a melodic line with a slur over the second and third notes. The Drums part shows a complex rhythmic pattern with various drum sounds. The Melody part has a simple line with some rests. The Piano part has a bass line with some chords. The Bass part has a simple line with some rests.



10

Ocarina

Drums

Piano

Bass

Detailed description: This block contains the musical notation for measures 10 and 11. It features five staves: Ocarina (treble clef), Drums (percussion clef), Piano (treble clef), and Bass (bass clef). Measure 10 starts with a treble clef and a key signature of one flat. The Ocarina part has a melodic line with a slur over the second and third notes. The Drums part shows a complex rhythmic pattern with various drum sounds. The Piano part has a bass line with some chords. The Bass part has a simple line with some rests.

11

Ocarina

Drums

Piano

Bass



12

Ocarina

Drums

Piano

Bass



13

Ocarina

Drums

Piano

Bass

15

Drums

Melody

Piano

Bass



16

Drums

Melody

Piano

Bass

17

Drums

Melody

Piano

Bass



19

Drums

Melody

Piano

Bass

20

Drums

Melody

Piano

Bass



21

Drums

Melody

Piano

Bass

22

Drums

Melody

Piano

Bass



23

Drums

Melody

Piano

Bass

Strings

24

Drums

Melody

Piano

Bass

Strings



25

Drums

Melody

Piano

Bass

Strings

26

Drums

Melody

Piano

Bass

Strings



27

Drums

Melody

Piano

Bass

Strings

28

Drums

Melody

Piano

Bass

Strings



29

Drums

Melody

Piano

Bass

Strings

30

Drums

Melody

Piano

Bass

Strings



32

Ocarina

Drums

Melody

Piano

Bass

33

Ocarina

Drums

Piano

Bass



34

Ocarina

Drums

Piano

Bass

36

Ocarina

Drums

Melody

Piano

Bass



37

Drums

Melody

Piano

Bass

38

Drums

Melody

Piano

Bass



40

Drums

Melody

Piano

Bass

41

Drums

Melody

Piano

Bass



42

Drums

Melody

Piano

Bass

43

Drums

Melody

Piano

Bass



44

Drums

Melody

Piano

Bass

Strings

45

Drums

Melody

Piano

Bass

Strings



46

Drums

Melody

Piano

Bass

Strings

47

Drums

Melody

Piano

Bass

Strings



48

Drums

Melody

Piano

Bass

Strings

49

Drums

Melody

Piano

Bass

Strings



50

Drums

Melody

Piano

Bass

Strings

51

Drums

Melody

Piano

Bass

Strings



53

Ocarina

Drums

Melody

Piano

Bass

54

Ocarina

Drums

Piano

Bass



55

Ocarina

Drums

Piano

Bass



56

Ocarina

Drums

Piano

Bass

57

Ocarina

Drums

Piano

Bass

58

Ocarina

Drums

Piano

Bass

59

Ocarina

Drums

Piano

Bass

60

Ocarina

Drums

Melody

Piano

Bass



62

Drums

Melody

Piano

Bass

64

Drums

Melody

Piano

Bass



65

Drums

Melody

Piano

Bass

Strings

66

Drums

Melody

Piano

Bass

Strings



67

Drums

Melody

Piano

Bass

Strings

68

Drums

Melody

Piano

Bass

Strings



69

Drums

Melody

Piano

Bass

Strings

70

Ocarina

Drums

Melody

Piano

Bass

Strings



71

Drums

Melody

Piano

Bass

Strings

72

Drums

Melody

Piano

Bass

Strings



73

Drums

Melody

Piano

Bass

Strings

74

Whistle

Drums

Melody

Piano

Bass

Strings

75

Whistle

Drums

Melody

Piano

Bass

Strings

76

Whistle

Drums

Melody

Piano

Strings

The image shows a musical score for five instruments: Whistle, Drums, Melody, Piano, and Strings. The Whistle part starts at measure 76 and has a long slur over two measures. The Drums part has a complex rhythmic pattern with many notes and rests. The Melody part is a simple line of notes. The Piano part has a sparse accompaniment with chords and rests. The Strings part has a few notes and rests.

Ocarina

♩ = 97,999985

4

8

11

15 17

34 16

53

56

59

61 9 8

Detailed description: The image shows a musical score for an ocarina in 4/4 time. The tempo is marked as ♩ = 97,999985. The score consists of ten staves of music. The first staff begins with a 4-measure rest, followed by a melodic line. The melody is characterized by a repeating eighth-note pattern: G4 (quarter), A4 (quarter), Bb4 (quarter), A4 (quarter), G4 (quarter), F4 (quarter), E4 (quarter), D4 (quarter). This pattern is repeated throughout the piece with various slurs and accents. The score includes several rests: a 4-measure rest at the beginning, a 17-measure rest at measure 15, a 16-measure rest at measure 34, a 9-measure rest at measure 61, and an 8-measure rest at the end. The key signature has one flat (Bb).

Whistle

Vol 23456 Vol 3 - THESIGN

♩ = 97,999985

73

The musical notation is on a single staff in 4/4 time. It begins with a treble clef and a 4/4 time signature. The first measure contains a whole rest. The second measure contains a quarter note with a slur above it. The third measure contains a quarter note with a slur above it. The fourth measure contains a quarter note with a slur above it. The fifth measure contains a quarter note with a slur above it. The sixth measure contains a quarter note with a slur above it. The seventh measure contains a quarter note with a slur above it. The eighth measure contains a quarter note with a slur above it. The piece ends with a double bar line.

Drums

♩ = 97,999985

The image displays a drum score for the song 'THE SIGN'. It consists of ten staves, each representing a measure of music. The notation is written on a five-line staff with a double bar line at the top. The time signature is 4/4. The tempo is indicated as ♩ = 97,999985. The notation includes various drum sounds represented by different symbols: a triangle for the snare drum, a circle for the bass drum, and a cross for the hi-hat. The pattern is highly rhythmic and complex, with many notes and rests. The first staff starts with a rest for the first two measures, followed by a series of notes. The subsequent staves continue the pattern, with some measures featuring rests for the first two measures. The notation is dense and detailed, showing the specific placement of notes on the staff and the use of various drum sounds.

V.S.

2

Drums

22

Drum notation for measures 22 and 23. Measure 22 contains a continuous eighth-note pattern. Measure 23 features a double bar line, a cymbal crash (marked with an asterisk), and a change in the drum pattern.

24

Drum notation for measures 24 and 25. Measure 24 continues the eighth-note pattern. Measure 25 includes a cymbal crash and a change in the drum pattern.

26

Drum notation for measures 26 and 27. Measure 26 continues the eighth-note pattern. Measure 27 includes a cymbal crash and a change in the drum pattern.

28

Drum notation for measures 28 and 29. Measure 28 continues the eighth-note pattern. Measure 29 includes a cymbal crash and a change in the drum pattern.

30

Drum notation for measures 30 and 31. Measure 30 continues the eighth-note pattern. Measure 31 includes a cymbal crash and a change in the drum pattern.

32

Drum notation for measures 32 and 33. Measure 32 starts with a cymbal crash and continues the eighth-note pattern. Measure 33 includes a cymbal crash and a change in the drum pattern.

34

Drum notation for measures 34 and 35. Measure 34 continues the eighth-note pattern. Measure 35 includes a cymbal crash and a change in the drum pattern.

37

Drum notation for measures 37 and 38. Measure 37 continues the eighth-note pattern. Measure 38 includes a cymbal crash and a change in the drum pattern.

39

Drum notation for measures 39 and 40. Measure 39 continues the eighth-note pattern. Measure 40 includes a cymbal crash and a change in the drum pattern.

41

Drum notation for measures 41 and 42. Measure 41 continues the eighth-note pattern. Measure 42 includes a cymbal crash and a change in the drum pattern.

Drums

43

45

47

49

51

53

55

57

59

61

V.S.

63

Musical notation for a drum set at measure 63. The notation is on a single staff with a double bar line on the left. It features a complex rhythmic pattern with various note values, including eighth and sixteenth notes, and rests. The notes are represented by stems with flags, and some are marked with 'x' or 'o' to indicate specific drum sounds.

65

Musical notation for a drum set at measure 65. The notation is on a single staff with a double bar line on the left. It features a complex rhythmic pattern with various note values, including eighth and sixteenth notes, and rests. The notes are represented by stems with flags, and some are marked with 'x' or 'o' to indicate specific drum sounds.

67

Musical notation for a drum set at measure 67. The notation is on a single staff with a double bar line on the left. It features a complex rhythmic pattern with various note values, including eighth and sixteenth notes, and rests. The notes are represented by stems with flags, and some are marked with 'x' or 'o' to indicate specific drum sounds.

69

Musical notation for a drum set at measure 69. The notation is on a single staff with a double bar line on the left. It features a complex rhythmic pattern with various note values, including eighth and sixteenth notes, and rests. The notes are represented by stems with flags, and some are marked with 'x' or 'o' to indicate specific drum sounds.

71

Musical notation for a drum set at measure 71. The notation is on a single staff with a double bar line on the left. It features a complex rhythmic pattern with various note values, including eighth and sixteenth notes, and rests. The notes are represented by stems with flags, and some are marked with 'x' or 'o' to indicate specific drum sounds.

73

Musical notation for a drum set at measure 73. The notation is on a single staff with a double bar line on the left. It features a complex rhythmic pattern with various note values, including eighth and sixteenth notes, and rests. The notes are represented by stems with flags, and some are marked with 'x' or 'o' to indicate specific drum sounds.

75

Musical notation for a drum set at measure 75. The notation is on a single staff with a double bar line on the left. It features a complex rhythmic pattern with various note values, including eighth and sixteenth notes, and rests. The notes are represented by stems with flags, and some are marked with 'x' or 'o' to indicate specific drum sounds.

Melody

♩ = 97,999985

8

5

16

19

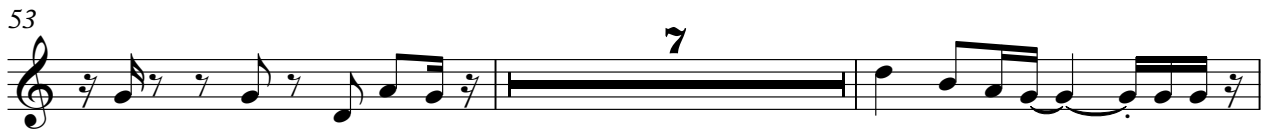
22

26

29

31

3



74



Piano

♩ = 97,999985

5

8

11

14

17

20

23

26

29

32

V.S.

35



38



41



44



47



50



53



56



59



62



Vol 23456 Vol 3 - THESIGN

Bass

♩ = 97,999985

5



9



12



16



20



24



28



32



36



40



44



48



53



57



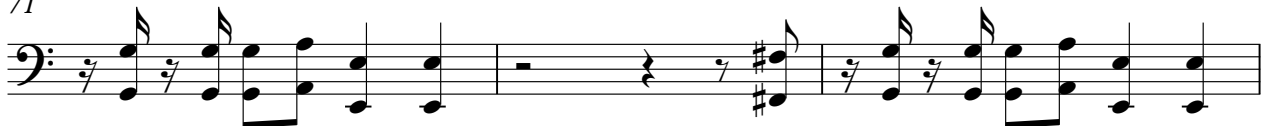
61



66



71



74

Musical notation for bass guitar, measure 74. The staff shows a sequence of notes: a whole rest, a quarter rest, a quarter note G#2, a quarter note A2, a quarter note B2, a quarter note C3, a quarter note D3, a quarter note E3, and a quarter note F3. The measure ends with a double bar line and a fermata. A large number '2' is positioned above the staff on the right side.

Vol 23456 Vol 3 - THESIGN

Strings

♩ = 97,999985

22

Musical staff for strings, measures 1-5. Measure 1 has a thick black bar. Measures 2-5 contain musical notation with slurs and accidentals.

28

13

Musical staff for strings, measures 6-10. Measure 8 has a thick black bar.

46

Musical staff for strings, measures 11-15.

52

13

Musical staff for strings, measures 16-20. Measure 16 has a thick black bar.

70

Musical staff for strings, measures 21-25.

74

Musical staff for strings, measures 26-30.