

Vonda Shepard - Searchin My Soul

♩ = 126,000060

Drums

Guitar

Bass

Piano

4

Vocals

Drums

Cymbals

Guitar

Bass

Piano

7

Vocals

Drums

Guitar

Bass

Piano

Detailed description: This system contains measures 7, 8, and 9. The vocal line starts with a quarter note G4, followed by eighth notes A4, B4, C5, B4, A4, G4, and a quarter rest. The drum line features a consistent pattern of a snare drum on the second and fourth beats of each measure. The guitar line consists of a series of chords and single notes, including a D7 chord, a Bb7 chord, and a G7 chord. The bass line has a steady eighth-note pattern: G2, F2, E2, D2, C2, B1, A1, G1. The piano line provides harmonic support with chords and single notes, including a D7 chord, a Bb7 chord, and a G7 chord.

10

Vocals

Drums

Guitar

Bass

Piano

Detailed description: This system contains measures 10, 11, and 12. The vocal line begins with a half note G4, followed by quarter notes A4, B4, C5, B4, A4, G4, and a quarter rest. The drum line continues with the same snare pattern as in the previous system. The guitar line features a mix of chords and single notes, including a D7 chord, a Bb7 chord, and a G7 chord. The bass line maintains the eighth-note pattern: G2, F2, E2, D2, C2, B1, A1, G1. The piano line continues with harmonic support, including a D7 chord, a Bb7 chord, and a G7 chord.

13

Vocals
Drums
Guitar
Bass
Piano

This musical system covers measures 13, 14, and 15. The Vocals part is in a treble clef with a key signature of one flat (Bb). The Drums part is in a drum clef, showing a consistent pattern of a snare drum followed by a bass drum. The Guitar part is in a treble clef with a key signature of one flat, featuring a mix of eighth and sixteenth notes. The Bass part is in a bass clef with a key signature of one flat, playing a steady eighth-note line. The Piano part is in a treble clef with a key signature of one flat, playing a complex accompaniment with many beamed notes.

16

Vocals
Drums
Guitar
Bass
Piano

This musical system covers measures 16, 17, and 18. The Vocals part continues in the same treble clef and key signature, with some rests. The Drums part shows a more active snare drum pattern in measure 16. The Guitar part features a prominent chordal accompaniment in measure 16. The Bass part maintains its eighth-note line. The Piano part continues with its intricate accompaniment.

19

Vocals

Drums

Cymbals

Guitar

Bass

Piano

22

Vocals

Drums

Guitar

Bass

Piano

25

Vocals

Drums

Cymbals

This system contains the first three staves of the score. The Vocals staff (treble clef) shows a melodic line starting with a quarter rest, followed by eighth and quarter notes. The Drums staff (percussion clef) features a pattern of eighth notes and quarter notes. The Cymbals staff (percussion clef) has a cymbal hit in the first measure, indicated by a diamond symbol with an 'X', and remains silent in the following measures.

Guitar

Bass

Piano

This system contains the last three staves of the first system. The Guitar staff (treble clef) plays a series of chords and single notes. The Bass staff (bass clef) provides a steady eighth-note accompaniment. The Piano staff (treble clef) plays chords and single notes, mirroring the vocal melody.

28

Vocals

Drums

Cymbals

This system contains the first three staves of the second system. The Vocals staff (treble clef) has a quarter rest in the first measure, followed by a melodic line. The Drums staff (percussion clef) has a more active pattern with eighth notes. The Cymbals staff (percussion clef) has a cymbal hit in the second measure, indicated by a diamond symbol with an 'X'.

Guitar

Bass

Piano

This system contains the last three staves of the second system. The Guitar staff (treble clef) continues with chords and single notes. The Bass staff (bass clef) maintains its eighth-note accompaniment. The Piano staff (treble clef) continues with chords and single notes.

31

Vocals

Drums

Guitar

Bass

Piano

34

Vocals

Drums

Guitar

Bass

Piano

37

Vocals

Drums

Guitar

Bass

Piano

Detailed description: This system contains measures 37, 38, and 39. The Vocals staff features a melodic line with eighth and quarter notes, including a half note in measure 38. The Drums staff shows a pattern of snare and bass drum hits. The Guitar staff has a mix of chords and moving lines. The Bass staff provides a steady accompaniment with quarter and eighth notes. The Piano staff features a complex accompaniment with many chords and moving lines.

40

Vocals

Drums

Guitar

Bass

Piano

Detailed description: This system contains measures 40, 41, 42, and 43. The Vocals staff has a melodic line with some rests and a half note in measure 40. The Drums staff shows a pattern of snare and bass drum hits. The Guitar staff has a mix of chords and moving lines. The Bass staff provides a steady accompaniment with quarter and eighth notes. The Piano staff features a complex accompaniment with many chords and moving lines.

43

Vocals
Drums
Cymbals
Guitar
Bass
Piano

This musical system covers measures 43, 44, and 45. The Vocals part features a melodic line starting with a quarter rest in measure 43, followed by eighth and quarter notes. The Drums part shows a pattern of quarter notes and eighth notes. The Cymbals part has a single cymbal hit in measure 45. The Guitar part consists of chords and single notes in a descending sequence. The Bass part has a steady eighth-note line. The Piano part features a complex accompaniment with chords and moving lines.

46

Vocals
Drums
Guitar
Bass
Piano

This musical system covers measures 46, 47, and 48. The Vocals part has a melodic line with quarter notes and quarter rests. The Drums part continues with a consistent pattern of quarter notes. The Guitar part shows a sequence of chords and single notes. The Bass part maintains an eighth-note line. The Piano part provides a rich accompaniment with chords and moving lines.

49

Vocals
Drums
Cymbals
Guitar
Bass
Piano

Detailed description: This system of music covers measures 49, 50, and 51. The Vocals part is in a treble clef with a key signature of one flat and a 4/4 time signature. The melody consists of eighth and quarter notes. The Drums part features a consistent pattern of quarter notes on the snare and bass drums. The Cymbals part is mostly silent, with a few cymbal crash symbols. The Guitar part is in a treble clef with a key signature of one flat, playing a series of chords and melodic lines. The Bass part is in a bass clef with a key signature of one flat, providing a steady rhythmic accompaniment. The Piano part is in a treble clef with a key signature of one flat, playing a complex accompaniment of chords and moving lines.

52

Vocals
Drums
Cymbals
Guitar
Bass
Piano

Detailed description: This system of music covers measures 52, 53, and 54. The Vocals part continues with a similar melodic line. The Drums part shows a change in the pattern, with a more active snare drum line in measure 52. The Cymbals part remains mostly silent. The Guitar part continues with its chordal and melodic accompaniment. The Bass part maintains its steady rhythmic accompaniment. The Piano part continues with its complex accompaniment.

55

Vocals

Drums

Cymbals

Guitar

Bass

Piano

58

Vocals

Drums

Guitar

Bass

Piano

61

Vocals

Drums

Cymbals

Guitar

Bass

Piano

65

Vocals

Drums

Guitar

Bass

Piano

68

Vocals

Drums

Cymbals

Guitar

Bass

Piano

71

Vocals

Drums

Cymbals

Guitar

Bass

Piano

74

Drums

Guitar

Bass

Piano

Detailed description: This system contains measures 74, 75, and 76. The Drums part features a consistent pattern of a snare drum on the second and fourth beats of each measure, with a hi-hat on the first and third beats. The Guitar part consists of a series of chords and single notes, including a prominent F major chord in the first measure. The Bass part provides a steady accompaniment with quarter and eighth notes. The Piano part features a complex accompaniment with chords and moving lines in both hands.

77

Vocals

Drums

Guitar

Bass

Piano

Detailed description: This system contains measures 77, 78, 79, and 80. The Vocals part begins in measure 77 with a whole rest, followed by a melodic line in measure 78. The Drums part continues with a similar pattern to the previous system, with a snare on the second and fourth beats. The Guitar part features a mix of chords and single notes, including a prominent F major chord. The Bass part provides a steady accompaniment with quarter and eighth notes. The Piano part features a complex accompaniment with chords and moving lines in both hands.

80

Vocals

Drums

Guitar

Bass

Piano

83

Vocals

Drums

Guitar

Bass

Piano

86

Vocals

Drums

Cymbals

Guitar

Bass

Piano

89

Vocals

Drums

Cymbals

Guitar

Bass

Piano

92

Vocals

Drums

Guitar

Bass

Piano

This system of music covers measures 92, 93, and 94. It features five staves: Vocals, Drums, Guitar, Bass, and Piano. The key signature has one flat (Bb). The time signature is 7/8. The vocal line consists of eighth and quarter notes with rests. The drum line shows a consistent pattern of snare and bass drum hits. The guitar part features a mix of chords and single notes. The bass line is a simple eighth-note pattern. The piano accompaniment includes chords and moving lines.

95

Vocals

Drums

Cymbals

Guitar

Bass

Piano

This system of music covers measures 95, 96, and 97. It features six staves: Vocals, Drums, Cymbals, Guitar, Bass, and Piano. The key signature has one flat (Bb). The time signature is 7/8. The vocal line continues with eighth and quarter notes. The drum line includes snare and bass drum hits. The cymbal part has a few specific hits. The guitar part continues with chords and single notes. The bass line maintains its eighth-note pattern. The piano accompaniment includes chords and moving lines.

98

Vocals

Drums

Cymbals

Guitar

Bass

Piano

101

Vocals

Drums

Cymbals

Guitar

Bass

Piano

104

Drums

Guitar

Bass

Piano

Detailed description: This system contains measures 104, 105, and 106. The Drums part features a consistent pattern of a snare drum on the first and third beats of each measure, with a hi-hat on the second and fourth beats. The Guitar part consists of a series of chords, including triads and dyads, with some notes beamed together. The Bass part plays a steady eighth-note line, primarily in the lower register. The Piano part provides harmonic support with chords and some melodic fragments.

107

Drums

Cymbals

Guitar

Bass

Piano

Detailed description: This system contains measures 107, 108, and 109. The Drums part continues the snare and hi-hat pattern from the previous system. The Cymbals part has a single cymbal hit on the first beat of measure 107, followed by rests. The Guitar part continues with its chordal accompaniment. The Bass part maintains its eighth-note line. The Piano part continues with its harmonic accompaniment.

110

Drums

Cymbals

Guitar

Bass

Piano

Detailed description: This system covers measures 110, 111, and 112. The Drums part features a consistent pattern of a snare drum on the second and fourth beats of each measure, with a hi-hat on the first and third beats. The Cymbals part is mostly silent, with a crash cymbal on the third beat of measure 111. The Guitar part consists of a series of chords and chordal textures, including some sixteenth-note runs. The Bass part provides a steady eighth-note accompaniment. The Piano part features a complex texture of chords and arpeggiated figures.

113

Drums

Cymbals

Guitar

Bass

Piano

Detailed description: This system covers measures 113, 114, and 115. The Drums part continues the pattern from the previous system. The Cymbals part has a crash cymbal on the third beat of measure 114. The Guitar part continues with its chordal and melodic textures. The Bass part maintains its eighth-note accompaniment. The Piano part continues with its intricate chordal and arpeggiated patterns.

116

Drums

Cymbals

Guitar

Bass

Piano

The image shows a musical score for five instruments: Drums, Cymbals, Guitar, Bass, and Piano, covering measures 116 to 119. The score is written in a common time signature (C). The Drums part features a consistent pattern of a snare drum followed by a hi-hat in each measure. The Cymbals part is mostly silent, with a cymbal crash indicated by a symbol in the final measure. The Guitar part is written in treble clef with a key signature of one flat (B-flat), featuring a series of chords and melodic lines. The Bass part is written in bass clef, providing a steady bass line with eighth and quarter notes. The Piano part is written in treble clef, mirroring the guitar's chordal structure with a similar melodic flow.

Vonda Shepard - Searchin My Soul

Vocals

♩ = 126,000060

3

8

12

17

22

26

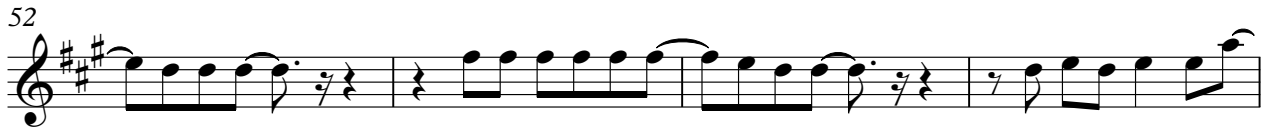
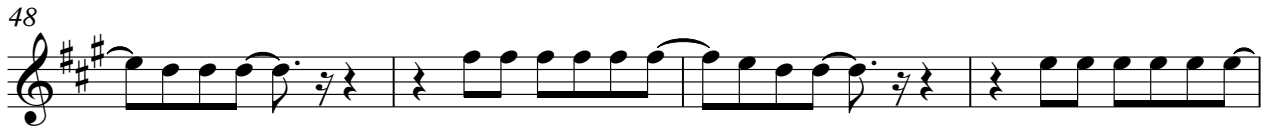
31

35

39

44

V.S.



100



17

Vonda Shepard - Searchin My Soul

Drums

♩ = 126,000060



6



12



17



22



28



34



40



45



51



V.S.

114



Cymbals

Vonda Shepard - Searchin My Soul

♩ = 126,000060

4 3 15 4

25 3 14 4

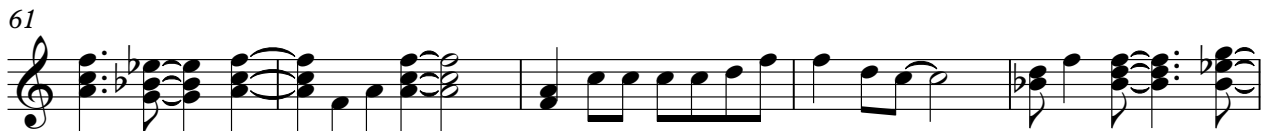
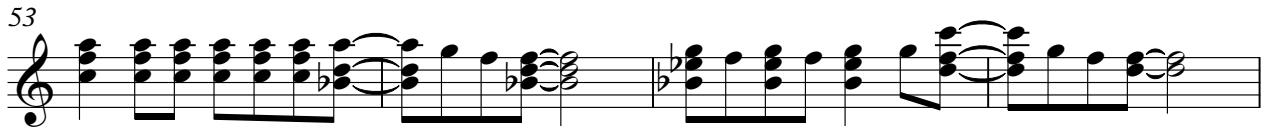
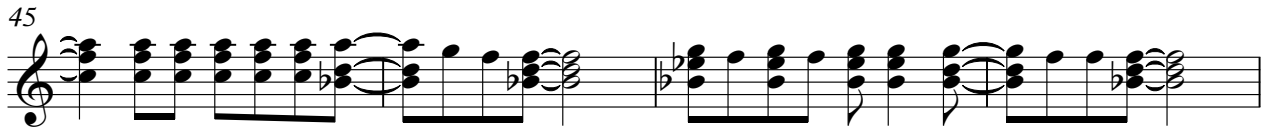
49 3 3 3

62 8 14

87 3 3 3

100 3 3 3

111 3 3



82



86



90



94



98



102



106



111



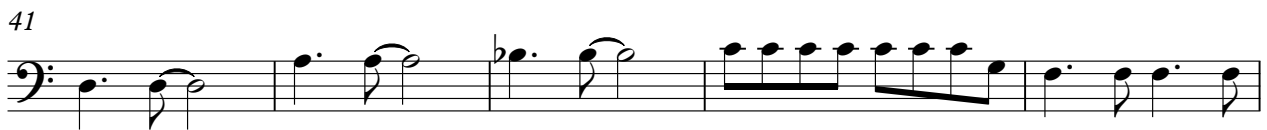
115



Vonda Shepard - Searchin My Soul

Bass

♩ = 126,000060



V.S.

56



61



68



73



79



85



90



95



100



105



110



115



Piano

Vonda Shepard - Searchin My Soul

♩ = 126,000060

5

9

13

17

21

25

29

41

45

49

53

57

61

65

69

73

77

81

85

89

93

97

101

105

109

113

116