

# Who - Long Live Rock

00:00:00:00  
1.1,00  
Intro

♩ = 130,000137

This system of the musical score includes five staves: Drums, Guitar 2, Guitar, Bass, and Melody. The time signature is 4/4. The Drums staff shows a complex pattern of hits and rests. The Guitar 2 and Guitar staves feature a series of chords, with the Guitar 2 staff including a large, multi-measure rest in the final measure. The Bass staff has a rhythmic line with eighth notes and rests. The Melody staff is currently empty.

♩ = 130,000137

This system continues the musical score with five staves: Drums, Guitar 2, Guitar, Bass, and Melody. The Drums staff begins with a triplet of hits, indicated by a '3' above the staff. The Guitar 2 staff continues with chords and includes a large multi-measure rest. The Guitar and Bass staves continue their respective parts. The Melody staff has a few notes in the final measure.

00:00:07:11  
5.1.00  
Verse 1

2

♩ = 132,000137

5

Drums

Guitar 2

Guitar

Bass

Melody

♩ = 132,000137

8

Drums

Guitar 2

Guitar

Bass

Melody

11

Drums

Guitar 2

Guitar

Bass

Melody

Detailed description: This system contains measures 11, 12, and 13. The Drums part features a consistent pattern of eighth notes on the snare and bass drum, with occasional cymbal hits. Guitar 2 and the main Guitar part play a steady eighth-note chord progression, primarily consisting of triads with a sharp second. The Bass line provides a simple eighth-note accompaniment. The Melody line consists of a few eighth notes in the first two measures, followed by a quarter rest in measure 12, and then continues with eighth notes in measure 13.

14

Drums

Guitar 2

Guitar

Bass

Melody

Detailed description: This system contains measures 14, 15, and 16. The Drums part continues with the same eighth-note pattern but includes more frequent cymbal accents. Guitar 2 and the main Guitar part continue with the eighth-note chord progression, but in measure 15, they transition to a sustained, blocky chord structure. The Bass line continues with eighth notes, including some chromatic movement. The Melody line features a quarter rest in measure 14, followed by eighth notes in measure 15, and then a quarter note followed by eighth notes in measure 16.

00:00:29:05  
17.1,00  
Chorus 1

17

Drums

Guitar 2

Guitar

Bass

Melody

Detailed description: This block contains the musical notation for measures 17 and 18. The score is arranged in five staves: Drums, Guitar 2, Guitar, Bass, and Melody. Measure 17 is marked with a double bar line and the number 17. The Drums staff shows a complex rhythmic pattern with various note values and rests. The Guitar 2 staff features a melodic line with several accidentals and a long note with a fermata. The Guitar staff has a similar melodic line. The Bass staff shows a steady eighth-note pattern. The Melody staff has a few notes, including a sharp sign, and then rests.

19

Drums

Guitar 2

Guitar

Bass

Detailed description: This block contains the musical notation for measures 19 and 20. The score is arranged in four staves: Drums, Guitar 2, Guitar, and Bass. Measure 19 is marked with a double bar line and the number 19. The Drums staff continues the rhythmic pattern from the previous block. The Guitar 2 staff has a melodic line with a sharp sign and a long note with a fermata. The Guitar staff has a melodic line with a sharp sign and a triplet of notes. The Bass staff shows a steady eighth-note pattern.

21

Drums

Guitar 2

Guitar

Bass

Melody

Detailed description: This system contains measures 21 and 22. The Drums part features a complex pattern with various rhythms and accents. Guitar 2 plays a steady accompaniment of chords. The Guitar part has a melodic line with some rests and chordal accompaniment. The Bass line provides a rhythmic foundation with eighth and quarter notes. The Melody line starts with a quarter note, followed by a half note, and then a series of eighth notes.

23

Drums

Guitar 2

Guitar

Bass

Melody

Detailed description: This system contains measures 23 and 24. The Drums part continues with a similar pattern to the previous system. Guitar 2 maintains its accompaniment. The Guitar part has a melodic line with some rests and chordal accompaniment. The Bass line provides a rhythmic foundation with eighth and quarter notes. The Melody line is mostly silent, with only a few notes at the beginning of the system.

25

Drums

Guitar 2

Guitar

Bass

Melody

27

Drums

Guitar 2

Guitar

Bass

Melody

30

Drums

Guitar 2

Guitar

Bass

Melody

Detailed description: This block contains the musical notation for measures 30 and 31. The score is arranged in five staves. The top staff is for Drums, showing a complex rhythmic pattern with various note values and rests. The second staff is for Guitar 2, featuring a treble clef and a key signature of one sharp (F#), with a series of chords and single notes. The third staff is for the main Guitar, also in treble clef and one sharp, showing a melodic line with some slurs. The fourth staff is for Bass, in bass clef, with a steady eighth-note pattern. The bottom staff is for Melody, in treble clef, with a few notes and rests.

32

Drums

Guitar 2

Guitar

Bass

Melody

Detailed description: This block contains the musical notation for measures 32 and 33. The score is arranged in five staves. The top staff is for Drums, with a consistent rhythmic pattern and some accents. The second staff is for Guitar 2, in treble clef and one sharp, playing a dense chordal accompaniment. The third staff is for the main Guitar, in treble clef and one sharp, playing a melodic line with many slurs and ties. The fourth staff is for Bass, in bass clef, with a steady eighth-note pattern. The bottom staff is for Melody, in treble clef, with a few notes and rests.

34

Drums

Guitar 2

Guitar

Bass

00:01:03:22  
36.1,00  
Verse 2

36

Drums

Guitar 2

Guitar

Bass

Melody



39

Drums

Guitar 2

Guitar

Bass

Melody

Detailed description: This system of music covers measures 39 and 40. The Drums part features a consistent pattern of eighth notes with 'x' marks above them, indicating muted notes. The Guitar 2 and Guitar parts play a series of chords, with a sharp sign (#) appearing above the second measure of each part. The Bass part has a melodic line with some rests. The Melody part consists of a simple eighth-note sequence.

41

Drums

Guitar 2

Guitar

Bass

Melody

Detailed description: This system of music covers measures 41 and 42. The Drums part continues with the same eighth-note pattern as in the previous system. The Guitar 2 and Guitar parts continue with their chordal accompaniment. The Bass part has a more active melodic line with frequent eighth notes and rests. The Melody part continues with its eighth-note sequence.

43

Drums

Guitar 2

Guitar

Bass

Melody

46

Drums

Guitar 2

Guitar

Bass

Melody

00:01:25:16  
48.1,00  
Chorus 2

48

Drums

Guitar 2

Guitar

Bass

Melody

50

Drums

Guitar 2

Guitar

Bass

52

Drums

Guitar 2

Guitar

Bass

Melody

Detailed description: This system of music covers measures 52 and 53. The Drums part features a consistent pattern of eighth notes on the snare and bass drum, with a hi-hat pattern indicated by 'x' marks above the staff. Guitar 2 plays a steady accompaniment of eighth-note chords. The main Guitar part has a melodic line with some chromatic movement and rests. The Bass line follows a similar eighth-note pattern. The Melody line starts with a quarter note, followed by a half note, and then continues with eighth notes in the second measure.

54

Drums

Guitar 2

Guitar

Bass

Melody

Detailed description: This system of music covers measures 54 and 55. The Drums part continues with the same eighth-note pattern as in the previous system. Guitar 2 maintains its accompaniment. The main Guitar part has a melodic line with some chromatic movement and rests. The Bass line follows a similar eighth-note pattern. The Melody line is mostly silent, with only a few notes in the first measure of the system.

56

Drums

Guitar 2

Guitar

Bass

Melody

Detailed description: This block contains the musical notation for measures 56, 57, and 58. The score is arranged in five staves. The top staff is for Drums, showing a complex rhythmic pattern with various drum sounds. The second staff is for Guitar 2, featuring a series of chords and melodic lines. The third staff is for Guitar, with a similar chordal and melodic structure. The fourth staff is for Bass, showing a steady bass line with some syncopation. The bottom staff is for Melody, which has a few notes and rests. The measures are numbered 56, 57, and 58.

59

Drums

Guitar 2

Guitar

Bass

Melody

Detailed description: This block contains the musical notation for measures 59, 60, and 61. The score is arranged in five staves. The top staff is for Drums, showing a complex rhythmic pattern with various drum sounds. The second staff is for Guitar 2, featuring a series of chords and melodic lines. The third staff is for Guitar, with a similar chordal and melodic structure. The fourth staff is for Bass, showing a steady bass line with some syncopation. The bottom staff is for Melody, which has a few notes and rests. The measures are numbered 59, 60, and 61.

61

Drums

Guitar 2

Guitar

Bass

Melody

Detailed description: This musical score covers measures 61 and 62. The Drums part features a consistent pattern of eighth notes with 'x' marks above them, indicating a specific drum sound. The Guitar 2 part has a treble clef and a key signature of one sharp (F#), playing a series of chords. The Guitar part is mostly silent, with a few notes in measure 62. The Bass part plays a steady eighth-note line. The Melody part has a few notes in measure 62.

63

Drums

Guitar 2

Guitar

Bass

Melody

Detailed description: This musical score covers measures 63 and 64. The Drums part continues with the eighth-note pattern and 'x' marks. The Guitar 2 part plays a sequence of chords, some with a sharp sign. The Guitar part has a melodic line with a slur and a sharp sign. The Bass part continues with the eighth-note line. The Melody part is mostly silent.

65

Drums

Guitar 2

Guitar

Bass

Detailed description: This block contains the musical notation for measures 65 and 66. It features four staves: Drums, Guitar 2, Guitar, and Bass. Measure 65 shows a drum pattern with a snare on the second and fourth beats, and a bass drum on the first and third beats. The guitar parts consist of chords and single notes. Measure 66 continues the drum pattern and guitar accompaniment.

00:02:00:03  
67.1,00  
Bridge

67

Drums

Guitar 2

Guitar

Bass

Melody

Detailed description: This block contains the musical notation for measures 67 through 70, which form the beginning of a bridge section. It features five staves: Drums, Guitar 2, Guitar, Bass, and Melody. A text box at the top left of the score indicates the time signature as 67.1,00 and identifies the section as the Bridge. The drum pattern in measure 67 is similar to the previous section. The guitar parts feature a mix of chords and single notes. The bass line provides a steady accompaniment. The Melody staff shows a simple melodic line with some rests.

70

Drums

Guitar 2

Guitar

Bass

Melody

Detailed description: This block contains the musical notation for measures 70, 71, and 72. The score is arranged in five staves. The top staff is for Drums, showing a consistent pattern of eighth notes and a cymbal crash. The second and third staves are for Guitar 2 and Guitar, both playing a steady eighth-note accompaniment. The fourth staff is for Bass, featuring a walking bass line with eighth notes and rests. The bottom staff is for Melody, which includes quarter notes, eighth notes, and rests. The key signature is one sharp (F#).

72

Drums

Guitar 2

Guitar

Bass

Melody

Detailed description: This block contains the musical notation for measures 72, 73, and 74. The notation continues from the previous block. The Drums staff shows a consistent pattern of eighth notes and a cymbal crash. The Guitar 2 and Guitar staves continue with their eighth-note accompaniment. The Bass staff continues with its walking bass line. The Melody staff continues with its sequence of notes and rests. The key signature remains one sharp (F#).



74

Drums

Guitar 2

Guitar

Bass

Melody

Detailed description: This system of music covers measures 74, 75, and 76. The drums part features a complex pattern with many 'x' marks indicating cymbal hits. The guitar parts (Guitar 2 and Guitar) play a melodic line with eighth notes and some triplets. The bass part has a steady eighth-note rhythm with some syncopation. The melody part is sparse, with notes appearing in measures 74 and 76.

77

Drums

Guitar 2

Guitar

Bass

Melody

Detailed description: This system of music covers measures 77, 78, and 79. The drums part continues with a similar pattern to the previous system. The guitar parts play a melodic line with eighth notes and some triplets. The bass part has a steady eighth-note rhythm with some syncopation. The melody part has a more active line with eighth notes and some rests.

80

Drums

Guitar 2

Guitar

Bass

Melody

00:02:29:05  
83.1.00  
Verse 3

82

Drums

Guitar 2

Guitar

Bass

Melody

84

Drums

Guitar 2

Guitar

Bass

Melody

Detailed description: This block contains the musical notation for measures 84, 85, and 86. The score is arranged in five staves. The top staff is for Drums, featuring a complex pattern of eighth and sixteenth notes with various articulations like accents and slurs. The second and third staves are for Guitar 2 and Guitar, both playing a rhythmic accompaniment of eighth notes in a block chord style. The fourth staff is for Bass, showing a melodic line with eighth and sixteenth notes, including some rests. The fifth staff is for Melody, featuring a simple eighth-note line. The key signature has one sharp (F#) and the time signature is 4/4.

87

Drums

Guitar 2

Guitar

Bass

Melody

Detailed description: This block contains the musical notation for measures 87, 88, and 89. The arrangement continues with five staves. The Drums staff shows a consistent rhythmic pattern with some changes in articulation. The Guitar 2 and Guitar staves maintain their block chord accompaniment. The Bass staff continues its melodic line with eighth and sixteenth notes. The Melody staff shows a steady eighth-note progression. The key signature and time signature remain the same as in the previous block.

90

Drums

Guitar 2

Guitar

Bass

Melody

Detailed description: This system covers measures 90, 91, and 92. The Drums part features a consistent pattern of eighth notes on the snare and bass drum, with cymbal accents. The Guitar 2 and Guitar parts play a rhythmic accompaniment of eighth-note chords, primarily in the lower register. The Bass part provides a steady eighth-note line. The Melody part begins with a quarter rest in measure 90, followed by a quarter note in measure 91, and a quarter note in measure 92.

93

Drums

Guitar 2

Guitar

Bass

Melody

Detailed description: This system covers measures 93, 94, and 95. The Drums part continues with the established pattern. The Guitar 2 and Guitar parts play a rhythmic accompaniment of eighth-note chords, primarily in the lower register. The Bass part provides a steady eighth-note line. The Melody part continues with a quarter note in measure 93, followed by a quarter note in measure 94, and a quarter note in measure 95.

00:02:50:29  
95.1,00  
Chorus 3/Coda

95

Drums

Guitar 2

Guitar

Bass

Melody

3

6

6

6

Detailed description: This system covers measures 95 and 96. The drums play a consistent pattern of eighth notes with accents. Guitar 2 features a complex chordal texture with many sharps. The main guitar part has a melodic line with sixteenth-note runs, with bracketed sections of six notes. The bass line is a simple eighth-note pattern. The melody consists of a triplet of eighth notes followed by a quarter note and a half note.

97

Drums

Guitar 2

Guitar

Bass

Melody

Detailed description: This system covers measures 97 and 98. The drums continue with the eighth-note pattern. Guitar 2 has a similar chordal texture. The main guitar part has a melodic line with sixteenth-note runs. The bass line continues with the eighth-note pattern. The melody is a simple quarter-note sequence.

99

Drums

Guitar 2

Guitar

Bass

Melody

101

Drums

Guitar 2

Guitar

Bass

Melody

103

Drums

Guitar 2

Guitar

Bass

Melody

Detailed description: This block contains the musical notation for measures 103 and 104. The score is arranged in five staves. The top staff is for Drums, showing a complex rhythmic pattern with various drum symbols. The second staff is for Guitar 2, featuring a steady eighth-note accompaniment. The third staff is for the main Guitar, with a melodic line consisting of quarter and eighth notes. The fourth staff is for the Bass, providing a rhythmic foundation with eighth notes and rests. The bottom staff is for the Melody, which has a few notes in the first measure and then rests for the remainder of the two measures.

105

Drums

Guitar 2

Guitar

Bass

Melody

Detailed description: This block contains the musical notation for measures 105 and 106. The score is arranged in five staves. The top staff is for Drums, continuing the rhythmic pattern from the previous block. The second staff is for Guitar 2, with a consistent eighth-note accompaniment. The third staff is for the main Guitar, showing a melodic line with some chromatic movement. The fourth staff is for the Bass, with a rhythmic pattern of eighth notes and rests. The bottom staff is for the Melody, which has a few notes in the first measure and then rests for the remainder of the two measures.

107

Drums

Guitar 2

Guitar

Bass

Melody

110

Drums

Guitar 2

Guitar

Bass



112

Drums

Guitar 2

Guitar

Bass

Melody

Detailed description: This system contains measures 112 and 113. The Drums part features a complex pattern with snare, hi-hat, and kick drum notation. Guitar 2 plays a steady eighth-note accompaniment. The main Guitar part has a melodic line with various intervals and accidentals. The Bass line provides a rhythmic foundation with eighth notes and rests. The Melody line starts with a quarter note, followed by a half note, and then continues with eighth notes.

114

Drums

Guitar 2

Guitar

Bass

Melody

Detailed description: This system contains measures 114 and 115. The Drums part continues with a similar pattern to the previous system. Guitar 2 maintains its accompaniment. The main Guitar part has a melodic line that concludes with a double bar line. The Bass line continues with eighth notes and rests. The Melody line has a few notes at the beginning of measure 114 and then remains silent for the rest of the system.

116

Drums

Guitar 2

Guitar

Bass

Melody

118

Drums

Guitar 2

Guitar

Bass

Melody

120

Drums

Guitar 2

Guitar

Bass

Melody

Detailed description: This system of music covers measures 120, 121, and 122. The Drums part features a consistent pattern of eighth notes on the snare and bass drum, with occasional cymbal hits. Guitar 2 and the main Guitar part play a series of chords, primarily triads and dyads, with some chromatic movement. The Bass line provides a steady eighth-note accompaniment. The Melody line is mostly silent, with a few notes appearing at the end of measure 122.

123

Drums

Guitar 2

Guitar

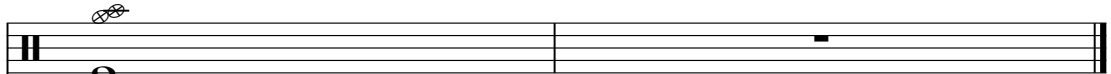
Bass

Melody

Detailed description: This system of music covers measures 123, 124, and 125. The Drums part continues with a similar pattern to the previous system. Guitar 2 and the main Guitar part play a series of chords, primarily triads and dyads, with some chromatic movement. The Bass line provides a steady eighth-note accompaniment. The Melody line is mostly silent, with a few notes appearing at the end of measure 125.


125

Drums



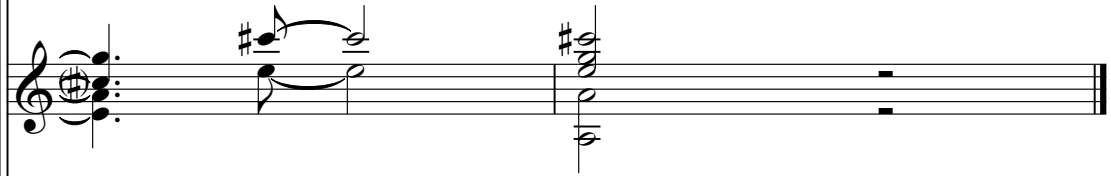
Drum notation for measure 125, featuring a double bar line at the start, a snare drum hit on the first beat, and a cymbal hit on the second beat.

Guitar 2




Guitar 2 notation for measure 125, starting with a treble clef and a key signature of one sharp (F#). The notation includes a chord on the first beat and a melodic line on the second beat.

Guitar



Guitar notation for measure 125, starting with a treble clef and a key signature of one sharp (F#). The notation includes a chord on the first beat and a melodic line on the second beat.

Bass



Bass notation for measure 125, starting with a bass clef. The notation includes a chord on the first beat and a melodic line on the second beat.

# Who - Long Live Rock

## Drums

♩ = 130,000137

5 ♩ = 132,000137

9

13

17

20

23

26

30

33

V.S.

Drums

37

41

45

49

53

57

60

63

66

70

74

78

82

85

89

93

96

99

103

107

V.S.

Drums

111

Musical notation for measure 111, featuring a drum staff with various rhythmic patterns and a guitar staff with notes and rests.

114

Musical notation for measure 114, featuring a drum staff with various rhythmic patterns and a guitar staff with notes and rests.

117

Musical notation for measure 117, featuring a drum staff with various rhythmic patterns and a guitar staff with notes and rests.

120

Musical notation for measure 120, featuring a drum staff with various rhythmic patterns and a guitar staff with notes and rests.

123

Musical notation for measure 123, featuring a drum staff with various rhythmic patterns and a guitar staff with notes and rests.



# Who - Long Live Rock

## Guitar 2

♩ = 130,000137

♩ = 132,000137

6

10

14

19

23

27

32

36

40

V.S.

44

49

53

57

61

65

71

77

81

86

90

95

99

103

107

112

116

120

124

# Who - Long Live Rock

Guitar

♩ = 130,000137

5 ♩ = 132,000137

9

13

18

21

25

30

34

37

V.S.

41



45



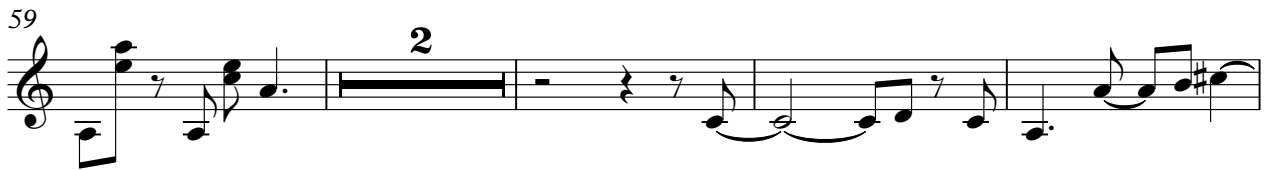
50



54



59



65



72



77



81



86



90

95

98

102

107

112

116

120

124

# Who - Long Live Rock

Bass

♩ = 130,000137



4

♩ = 132,000137



7



11



15



18



21



24



27



30



V.S.

34



37



41



44



48



51



54



57



60



64





67



70



73



77



81



85



89



93



96



99



V.S.

102



105



108



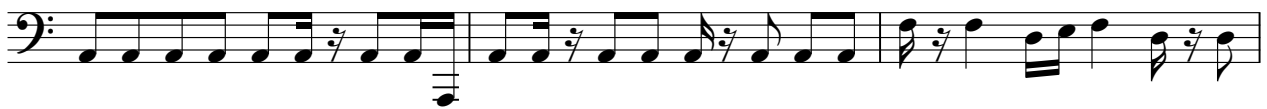
112



115



118



121



124



# Who - Long Live Rock

## Melody

♩ = 130,000137      ♩ = 132,000137

3

8

12

17

3

25

31

3

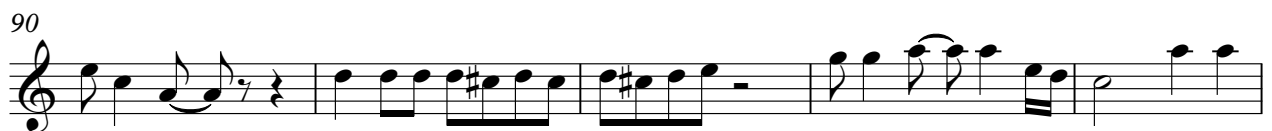
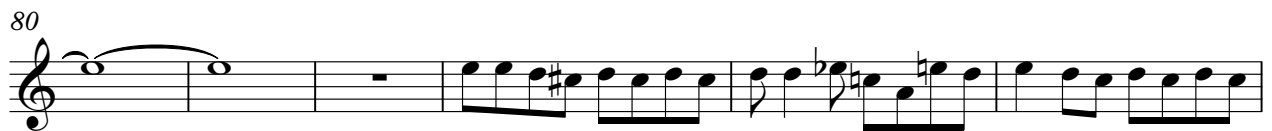
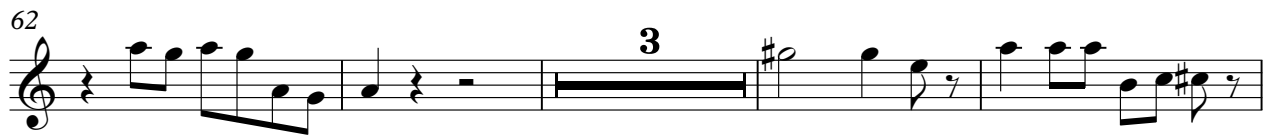
38

42

46

3

52



Melody

3

