

Forester Sisters - Lyin in is arms again

$\text{♩} = 160,000000$

Melody

Percussion

Guitar

6

Melody

Guitar

11

Melody

Guitar

16

Melody

Guitar

21

Melody

Guitar

25

Melody

Guitar

29

Melody

Guitar

33

Melody

Perc.

Guitar

38

Melody

Perc.

Guitar

42

Melody

Perc.

Guitar

46

Melody

Perc.

Guitar

This system contains measures 46 through 49. The Melody line starts with a treble clef and a key signature of one flat. It features eighth notes and quarter notes, with a fermata over the final measure. The Percussion line consists of a steady eighth-note rhythm. The Guitar line shows complex chordal textures with many beamed notes and slurs.

50

Melody

Perc.

Guitar

This system contains measures 50 through 53. The Melody line continues with eighth and quarter notes. The Percussion line maintains its eighth-note pattern. The Guitar line features dense chordal accompaniment with various articulations.

54

Melody

Perc.

Guitar

This system contains measures 54 through 57. The Melody line includes a half note and a dotted quarter note. The Percussion line continues with eighth notes. The Guitar line has a prominent bass line with some sharp signs indicating specific fretting.

58

Melody

Perc.

Guitar

This system contains measures 58 through 61. The Melody line features a half note and a quarter note. The Percussion line continues with eighth notes. The Guitar line shows a continuation of the complex chordal textures from the previous systems.

62

Melody

Perc.

Guitar

66

Melody

Perc.

Guitar

70

Melody

Perc.

Guitar

74

Melody

Perc.

Guitar

78

Melody

Perc.

Guitar

82

Melody

Perc.

Guitar

86

Melody

Perc.

Guitar

90

Melody

Perc.

Guitar

94

Melody

Perc.

Guitar

98

Melody

Perc.

Guitar

102

Melody

Perc.

Guitar

106

Melody

Perc.

Guitar

110

Melody

Perc.

Guitar

114

Melody

Perc.

Guitar

118

Melody

Perc.

Guitar

122

Melody

Perc.

Guitar

127

Melody

Perc.

Guitar

131

Melody

Perc.

Guitar

135

Melody

Perc.

Guitar

139

Melody

Perc.

Guitar

143

Melody

Perc.

Guitar

Detailed description: This block contains the musical notation for measures 143 through 146. The Melody part is in treble clef and consists of a sequence of quarter notes: G4, A4, B4, C5, B4, A4, and G4. The Percussion part is in a drum set notation, showing a steady eighth-note pattern. The Guitar part is in treble clef and features a complex arrangement of chords and arpeggios, including a sharp sign (#) in the second measure.

147

Melody

Perc.

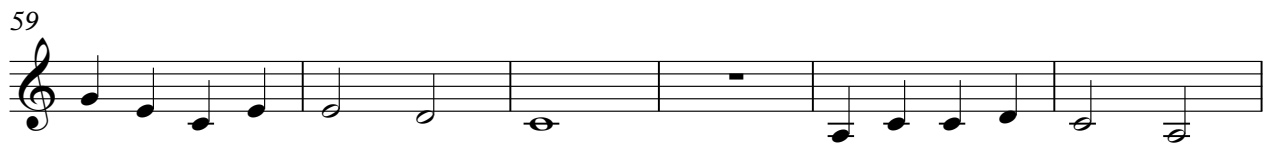
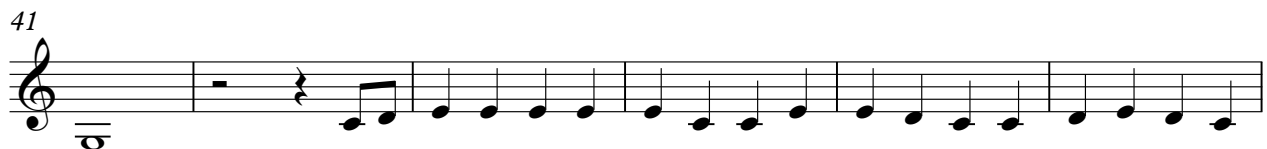
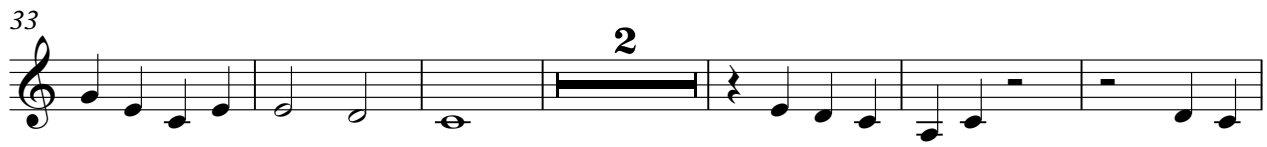
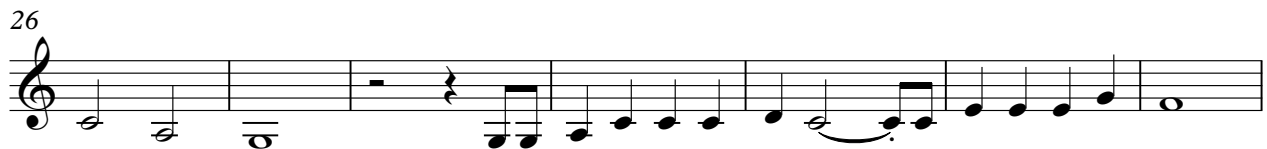
Guitar

Detailed description: This block contains the musical notation for measures 147 through 150. The Melody part is in treble clef and features a single whole note G4 in the first measure, followed by rests. The Percussion part continues with eighth-note patterns. The Guitar part includes chords and arpeggios, with a large, complex chord structure in the fifth measure.

Forester Sisters - Lyin in is arms again

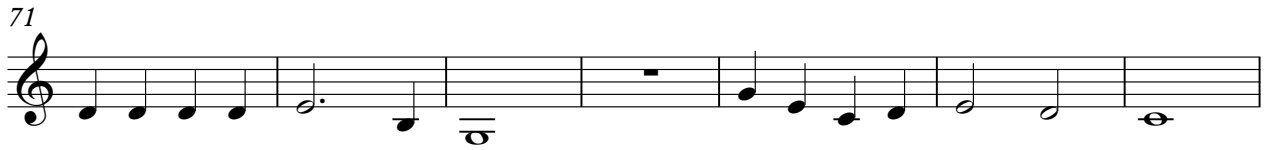
Melody

♩ = 160,000000



Melody

71



78



84



92



98



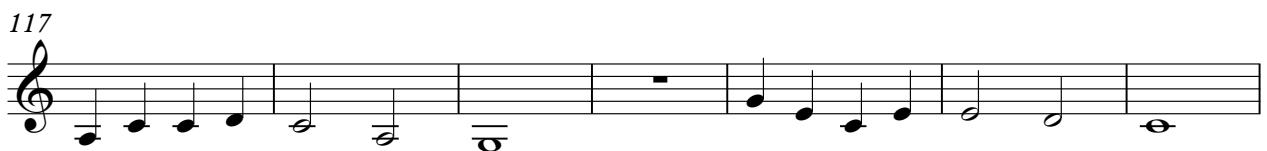
104



110



117



124



132



Melody

3

138



144



4

Percussion

Forester Sisters - Lyin in is arms again

♩ = 160,000000

34



39



45



51



57



63



69



75



81



87



V.S.

93



99



105



111



117



123



129



135



141



146



Forester Sisters - Lyin in is arms again

Guitar

$\text{♩} = 160,000000$

6

11

16

21

26

31

36

41

46

V.S.

This image displays a page of guitar sheet music, labeled '2' and 'Guitar'. It contains ten systems of musical notation, each starting with a measure number: 51, 56, 61, 66, 71, 76, 81, 86, 91, and 96. Each system consists of a single treble clef staff. The notation includes various musical symbols such as notes, rests, and chord diagrams (represented by vertical lines and dots on the staff). The music is written in a style typical of guitar tablature, with a focus on chordal textures and melodic lines. The page is otherwise blank.

The image displays ten systems of guitar sheet music, each starting with a measure number. The notation is written on a single treble clef staff per system. The music consists of a mix of chords, arpeggios, and melodic lines. Some systems include a sharp sign (#) on the staff, indicating a key signature change. The notation includes various rhythmic values and articulation marks. The systems are numbered 101, 106, 111, 116, 121, 126, 131, 136, 141, and 146, with the final system ending in a double bar line.