

Lee Greenwood - Mornin' Ride

♩ = 165,000168

Guitar (chords)

Guitar (melody)

5

Guitar (chords)

Guitar (melody)

9

Guitar (chords)

Guitar (melody)

13

Guitar (chords)

Guitar (melody)

14

Guitar (chords)

Guitar (melody)

Guitar (chords)

Guitar (melody)

This system covers measures 16 and 17. The guitar chords are written in the upper staff, showing a sequence of chords with various voicings. The guitar melody in the lower staff consists of a series of eighth notes, primarily in the lower register.

Guitar (chords)

Guitar (melody)

This system covers measures 18 and 19. The guitar chords continue the sequence from the previous system. The guitar melody in the lower staff features a mix of eighth and quarter notes, with some rests.

Guitar (chords)

Guitar (melody)

This system covers measures 20 and 21. The guitar chords are more complex, including some triads and dyads. The guitar melody in the lower staff has a more active line with eighth notes and some grace notes.

Guitar (chords)

Guitar (melody)

This system covers measures 22, 23, and 24. The guitar chords are dense and feature many accidentals. The guitar melody in the lower staff is mostly quarter notes with some eighth notes.

Guitar (chords)

Guitar (melody)

This system covers measures 25 and 26. The guitar chords are very dense and feature many accidentals. The guitar melody in the lower staff is mostly quarter notes with some eighth notes.

Guitar (chords)

Guitar (melody)

This system covers measures 27 and 28. The guitar chords are very dense and feature many accidentals. The guitar melody in the lower staff is mostly quarter notes with some eighth notes.

29

Guitar (chords)

Guitar (melody)

31

Guitar (chords)

Guitar (melody)

33

Guitar (chords)

Guitar (melody)

34

Guitar (chords)

Guitar (melody)

35

Guitar (chords)

Guitar (melody)

37

Drums

Guitar (chords)

Guitar (melody)

41

Drums

Guitar (chords)

Guitar (melody)

Drums: Four measures of a steady quarter-note drum pattern.

Guitar (chords): Four measures of a D major chord, followed by a D major chord with a sharp sign.

Guitar (melody): A melodic line starting on a whole note, followed by quarter notes, and ending with a half note.

46

Drums

Guitar (chords)

Guitar (melody)

Drums: Four measures of a steady quarter-note drum pattern.

Guitar (chords): Four measures of a D major chord with a sharp sign.

Guitar (melody): A melodic line starting with a half note, followed by quarter notes, and ending with a half note.

51

Drums

Guitar (chords)

Guitar (melody)

Drums: Four measures of a steady quarter-note drum pattern.

Guitar (chords): Four measures of a D major chord with a sharp sign.

Guitar (melody): A melodic line starting with a half note, followed by quarter notes, and ending with a half note.

56

Drums

Guitar (chords)

Guitar (melody)

Drums: Four measures of a steady quarter-note drum pattern.

Guitar (chords): Four measures of a D major chord with a sharp sign.

Guitar (melody): A melodic line starting with a half note, followed by quarter notes, and ending with a half note.

61

Drums

Guitar (chords)

Guitar (melody)

66

Drums

Guitar (chords)

Guitar (melody)

70

Guitar (chords)

Guitar (melody)

74

Guitar (chords)

Guitar (melody)

78

Guitar (chords)

Guitar (melody)

6

82

Guitar (chords)

Guitar (melody)

83

Guitar (chords)

Guitar (melody)

85

Guitar (chords)

Guitar (melody)

86

Guitar (chords)

Guitar (melody)

87

Guitar (chords)

Guitar (melody)

89

Drums

Guitar (chords)

Guitar (melody)

93

Drums

Guitar (chords)

Guitar (melody)

98

Drums

Guitar (chords)

Guitar (melody)

102

Drums

Guitar (chords)

Guitar (melody)

106

Drums

Guitar (chords)

Guitar (melody)

111

Drums

Guitar (chords)

Guitar (melody)

116

Drums

Guitar (chords)

Guitar (melody)

120

Drums

Guitar (chords)

Guitar (melody)

124

Drums

Guitar (chords)

Guitar (melody)

128

Drums

Guitar (chords)

Guitar (melody)

132

Drums

Guitar (chords)

Guitar (melody)

136

Drums

Guitar (chords)

Guitar (melody)

139

Drums

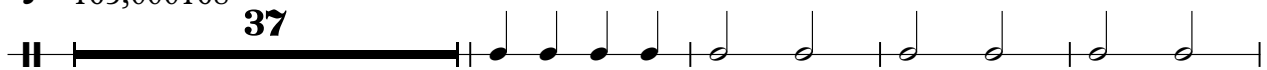
Guitar (chords)

Drums


Lee Greenwood - Mornin' Ride

♩ = 165,000168

37



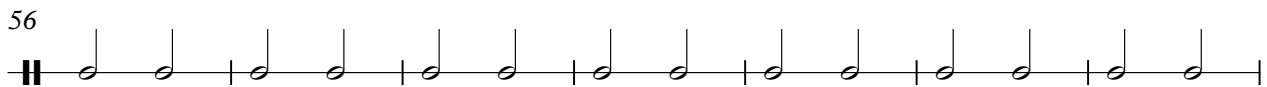
42



49



56



63



70

20




95



102



109



116



V.S.

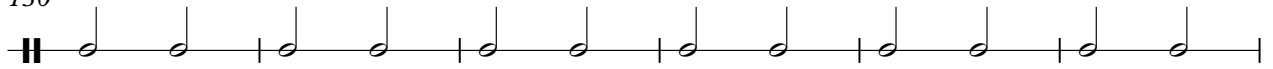
2

Drums

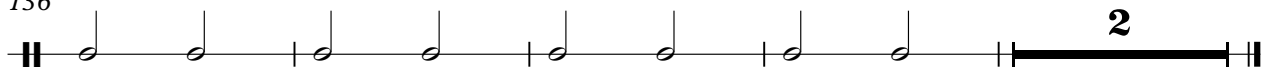
123



130



136



Lee Greenwood - Mornin' Ride

Guitar (chords)

$\text{♩} = 165,000168$

6

11

14

16

17

18

20

25

30

V.S.

2

Guitar (chords)

31

33

34

35

38

44

50

56

62

68

Guitar (chords)

V.S.

Guitar (chords)

108

114

120

125

130

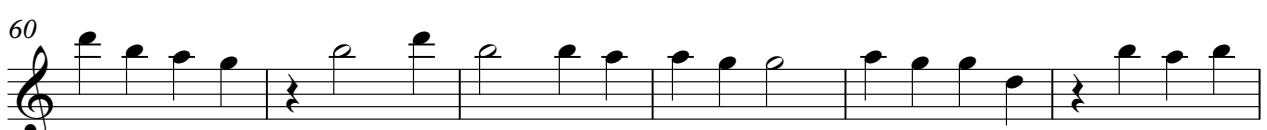
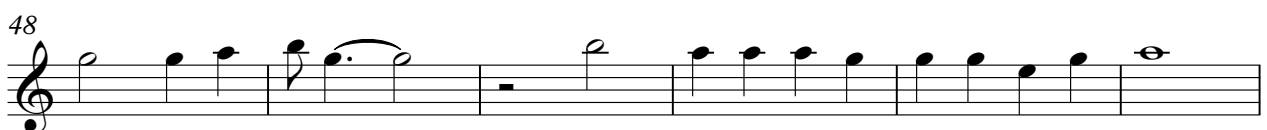
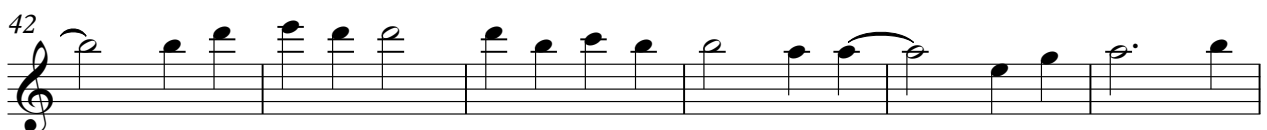
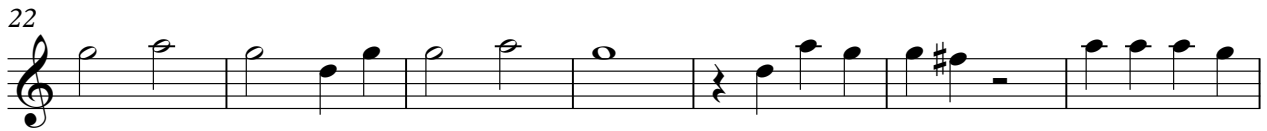
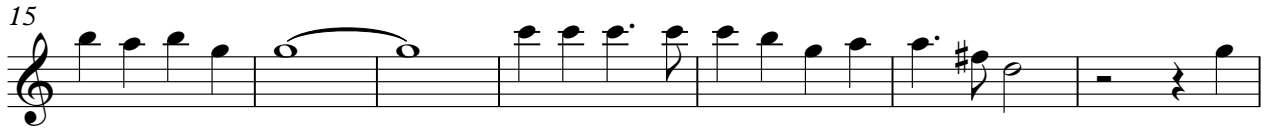
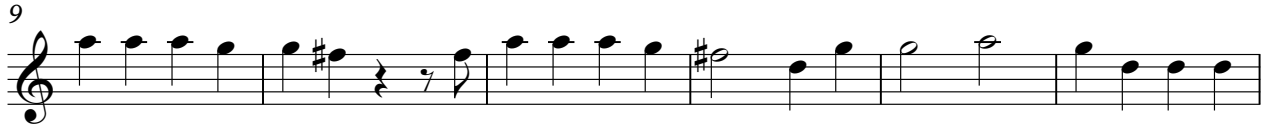
135

138

Lee Greenwood - Mornin' Ride

Guitar (melody)

♩ = 165,000168



V.S.

Guitar (melody)

129

Musical notation for guitar melody, measures 129-134. The notation is on a single staff with a treble clef. It features a sequence of eighth notes with various accidentals (sharps, flats, naturals) and some notes beamed together. The key signature appears to be one flat (B-flat major or D minor).

135

Musical notation for guitar melody, measures 135-136. Measure 135 contains a sequence of eighth notes with various accidentals. Measure 136 contains a triplet of eighth notes, indicated by a '3' above the notes. The notation is on a single staff with a treble clef.