

# Pool, Henry-Nocturne 3 for Trumpet amp Strings

♩ = 67,999763

Baroque Trumpet

Violin

Violin

Viola

Violoncello

7

Bar. Tpt.

Vln.

Vln.

Vla.

Vc.

13

Bar. Tpt.

Vln.

Vln.

Vla.

Vc.

18

Bar. Tpt.

Vln.

Vln.

Vla.

Vc.

22

Bar. Tpt.

Vln.

Vln.

Vla.

Vc.

28

Bar. Tpt.

Vln.

Vln.

Vla.

Vc.

33

Bar. Tpt.

Vln.

Vln.

Vla.

Vc.

38

Bar. Tpt.

Vln.

Vln.

Vla.

Vc.

43

Bar. Tpt.

Vln.

Vln.

Vla.

Vc.

48

Bar. Tpt.

Vln.

Vln.

Vla.

Vc.

53

Bar. Tpt.

Vln.

Vln.

Vla.

Vc.

58

Bar. Tpt.

Vln.

Vla.

Vc.

63

Bar. Tpt.

Vln.

Vla.

Vc.

68

Bar. Tpt.

Vln.

Vla.

Vc.

71

Bar. Tpt.

Vla.

Vc.

73

Bar. Tpt.

Vla.

Vc.

74

6 6 6

Bar. Tpt.

Vln.

Vln.

Vla.

Vc.

77

Bar. Tpt.

Vln.

Vln.

Vla.

Vc.



83

Bar. Tpt.

Vln.

Vln.

Vla.

Vc.

89

Bar. Tpt.

Vln.

Vln.

Vla.

Vc.

93

Bar. Tpt.

Vln.

Vln.

Vla.

Vc.

98

Bar. Tpt.

Vln.

Vln.

Vla.

Vc.

104

Vln.

Vln.

Vla.

Vc.

107

Bar. Tpt.

Vln.

Vln.

Vla.

Vc.

110

Bar. Tpt.

Vln.

Vla.

Vc.

114

Bar. Tpt.

Vla.

Vc.

118

Bar. Tpt.

Vla.

Vc.

122

Bar. Tpt.

Vla.

Vc.

126

Bar. Tpt.

Vla.

Vc.

130

Bar. Tpt.

Vla.

Vc.

134

Bar. Tpt.

Vln.

Vla.

Vc.

137

Vln.

Vln.

Vla.

Vc.

140

Bar. Tpt.

Vln.

Vc.

142

Bar. Tpt.

Vln.

Vc.

145

Bar. Tpt.

Vln.

Vln.

Vla.

Vc.

149

Bar. Tpt.

Vln.

Vln.

Vla.

Vc.

155

Bar. Tpt.

Vln.

Vln.

Vla.

Vc.

161

Bar. Tpt.

Vln.

Vln.

Vla.

Vc.

165

Bar. Tpt.

Vln.

Vln.

Vla.

Vc.

169

Bar. Tpt.

Vln.

Vln.

Vla.

Vc.



175

Bar. Tpt.

Vln.

Vln.

Vla.

Vc.

180

Bar. Tpt.

Vln.

Vln.

Vla.

Vc.

185

Bar. Tpt.

Vln.

Vln.

Vla.

Vc.

190

Bar. Tpt.

Vln.

Vln.

Vla.

Vc.

195

Bar. Tpt.

Vln.

Vln.

Vla.

Vc.

200

Bar. Tpt.

Vln.

Vla.

Vc.

205

Bar. Tpt.

Vln.

Vla.

Vc.

210

Bar. Tpt.

Vln.

Vla.

Vc.

215

Bar. Tpt.

Vln.

Vla.

Vc.

217

Bar. Tpt.

Vla.

Vc.

219

Bar. Tpt.

Vla.

Vc.

220

6 6 6

Bar. Tpt.

Vln.

Vln.

Vla.

Vc.

224

Bar. Tpt.

Vln.

Vln.

Vla.

Vc.

230

Bar. Tpt.

Vln.

Vln.

Vla.

Vc.

235

Bar. Tpt.

Vln.

Vln.

Vla.

Vc.

239

Bar. Tpt.

Vln.

Vln.

Vla.

Vc.

244

Bar. Tpt.

Vln.

Vln.

Vla.

Vc.

250

Bar. Tpt.

Vln.

Vln.

Vla.

Vc.

This musical score page contains five staves for measures 250 through 255. The instruments are Baritone Trumpet (Bar. Tpt.), Violin I (Vln.), Violin II (Vln.), Viola (Vla.), and Violoncello (Vc.). The key signature is B-flat major (two flats) and the time signature is 4/4. Measure 250 shows the Baritone Trumpet with a melodic line, Violin I with a sustained chord, Violin II with a rhythmic accompaniment of eighth notes, Viola with a rhythmic accompaniment of eighth notes, and Violoncello with a sustained bass line. Measure 251 continues these parts. Measure 252 features a change in the Baritone Trumpet's melody and a more active Violin I part. Measure 253 shows the Baritone Trumpet playing a complex, chromatic figure. Measure 254 has the Baritone Trumpet playing a sustained chord. Measure 255 concludes the section with a final chord for all instruments.



# Pool, Henry-Nocturne 3 for Trumpet amp Strings

Baroque Trumpet

♩ = 67,999763

3

10

17

22

29

35

42

50

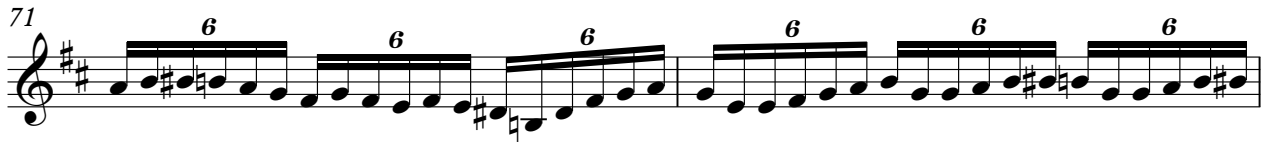
58

66

V.S.

Baroque Trumpet

71



73



75



84



91



97



104



113



119



124



128

133

142

153

160

167

173

179

186

194

V.S.

202

210

216

218

220

221

230

237

242

249

Detailed description of the musical score: The score is for a Baroque Trumpet in G major. It consists of ten staves of music. The first staff (measures 202-210) features a melodic line with a triplet in measure 210. The second staff (measures 216-218) contains sixteenth-note runs, each marked with a '6' for sixteenth notes. The third staff (measures 218-220) continues with similar sixteenth-note patterns, also marked with '6'. The fourth staff (measures 220-221) shows a change in rhythm with a triplet of eighth notes. The fifth staff (measures 221-230) includes a triplet of eighth notes and a rest. The sixth staff (measures 230-237) features a melodic line with a rest. The seventh staff (measures 237-242) continues the melodic line. The eighth staff (measures 242-249) concludes with a melodic line and a final cadence.

# Pool, Henry-Nocturne 3 for Trumpet amp Strings

Violin

♩ = 67,999763



9



15



21



28



34



40



48



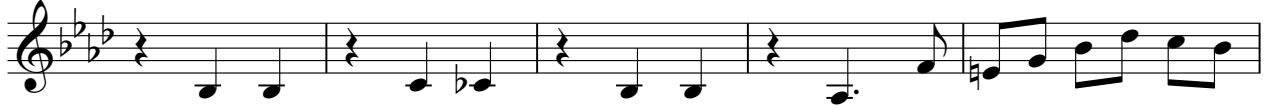
53



76



84



89



94



102



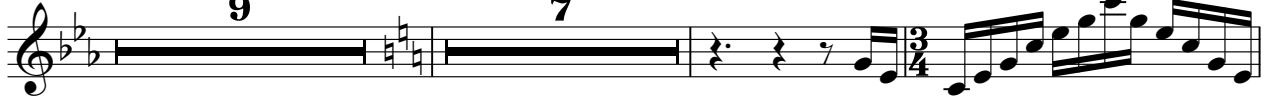
107



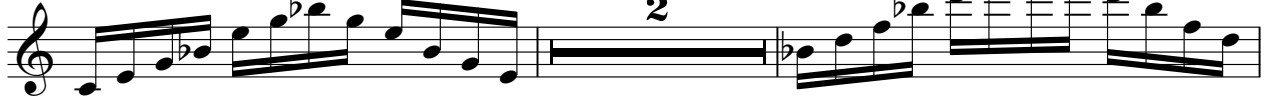
110



119



137



141



Violin

144



148



156



162



168



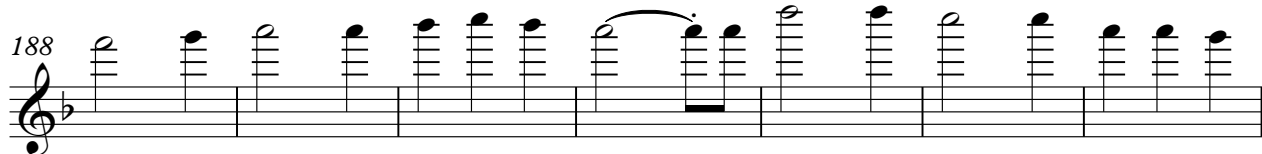
175



181



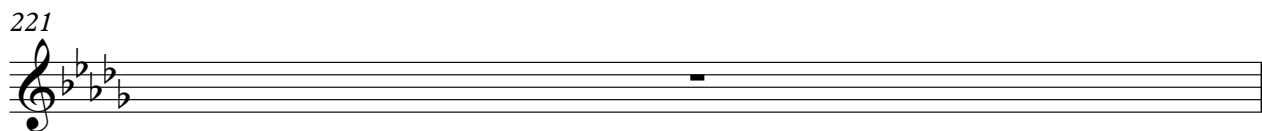
188



195



221



222



230



236



242



249





# Pool, Henry-Nocturne 3 for Trumpet amp Strings

Violin

♩ = 67,999763



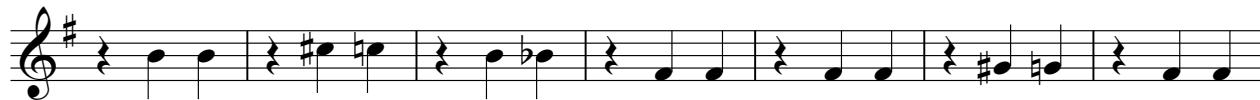
9



16



22



29



36



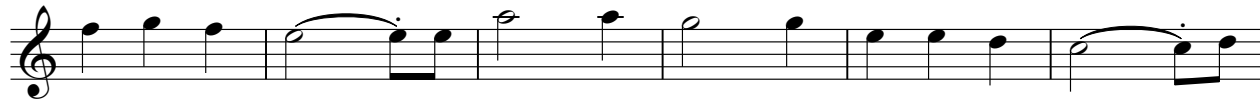
44



52



60



66



75

83

91

98

106

108

128

140

153

161



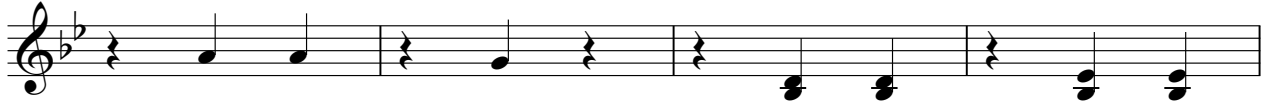
234



241



248



252



# Pool, Henry-Nocturne 3 for Trumpet amp Strings

Viola

♩ = 67,999763



9



16



22



29



35



43



51



59



67



V.S.

72



75



83



91



98



106



114



119



124



128



Viola

133

2

139

2 6

151

159

167

174

180

187

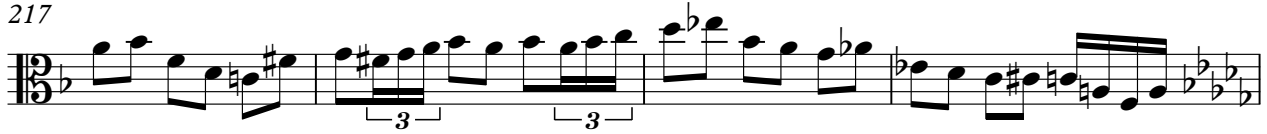
195

203

211



217



221



229



236



242



249





# Pool, Henry-Nocturne 3 for Trumpet amp Strings

Violoncello

♩ = 67,999763



12



21



30



39



44



49



54



59



64



V.S.

69



74



83



93



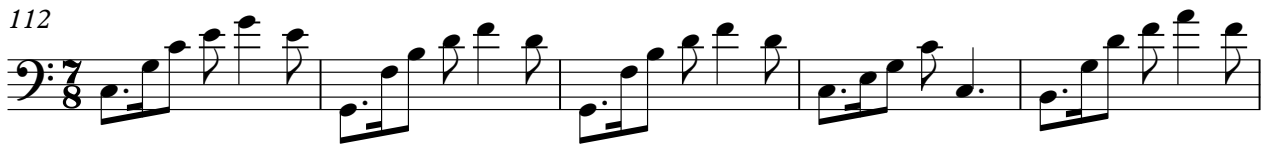
101



107



112



117



122



127



132

137

142

148

158

167

176

185

190

195

200



205



210



215



220



228



238



247

