

Pierre dit Mery , Olivier-Trio pour cordes ndeg1

♩ = 91,000229

Musical score for Violin and Violoncello, measures 1-6. The score is in 4/4 time with a key signature of three flats (B-flat, E-flat, A-flat). The Violin part starts with a whole rest in the first three measures, followed by a quarter rest in the fourth measure, and then a melodic line of eighth notes in the fifth and sixth measures. The Violoncello part consists of a steady accompaniment of eighth notes.

Musical score for Violin and Violoncello, measures 7-11. The Violin part begins with a whole note in measure 7, followed by a half note in measure 8, and then a melodic line of eighth notes in measures 9-11. The Violoncello part continues with a melodic line of eighth notes.

♩ = 79,999786

Musical score for Violin and Violoncello, measures 12-16. The Violin part features a melodic line with triplets in measures 14-16. The Violoncello part provides a steady accompaniment of eighth notes.

Musical score for Violin and Violoncello, measures 17-21. The Violin part features a melodic line with triplets in measures 17-21. The Violoncello part provides a steady accompaniment of eighth notes.

19

Vln. Vln. Vc.

3 3 6 3

Detailed description: This system contains measures 19 through 22. It features three staves: Violin I (Vln.), Violin II (Vln.), and Violoncello (Vc.). The key signature has three flats (B-flat, E-flat, A-flat). Measures 19 and 20 show intricate sixteenth-note passages in both violins, with triplets of eighth notes. The cello part has a sixteenth-note triplet in measure 19 and a triplet of eighth notes in measure 20. Measures 21 and 22 are mostly whole notes in all parts.

23

Vln. Vln. Vc.

Detailed description: This system contains measures 23 through 27. The Violin I part has a rest in measure 23, followed by a melodic line in measures 24-27. The Violin II part plays sustained chords in measures 24-27. The Cello part plays sustained chords in measures 24-26 and a melodic line in measure 27.

28

Vln. Vln. Vc.

Detailed description: This system contains measures 28 through 33. The Violin I part has a melodic line with a long note in measure 28, followed by eighth-note patterns in measures 29-31, and a long note in measure 32. The Violin II part has a melodic line in measure 28, followed by sustained chords in measures 29-33. The Cello part has a melodic line in measure 28, followed by sustained chords in measures 29-33.

34

♩ = 79,999786

Vln. Vln. Vc.

3 3 3 3

Detailed description: This system contains measures 34 through 37. It features three staves: Violin I (Vln.), Violin II (Vln.), and Violoncello (Vc.). The key signature has three flats. A tempo marking of ♩ = 79,999786 is present. Measures 34 and 35 have rests in the violin parts. Measures 36 and 37 feature rapid sixteenth-note passages in both violins, with triplets of eighth notes. The cello part has sustained chords in measures 36 and 37.

37

Vln. I
Vln. II
Vc.

3 3 3 6 3

40

$\text{♩} = 100,000168$

Vln. I
Vln. II
Vc.

46

$\text{♩} = 60,000000$

Vln. I
Vln. II
Vc.

49

Vln. I
Vln. II
Vc.

51

Vln. Vln. Vc.

This system contains measures 51 and 52. The first violin part (Vln.) features a melodic line with eighth and sixteenth notes, including a double bar line in measure 52. The second violin part (Vln.) and the cello part (Vc.) provide a rhythmic accompaniment with eighth notes and rests.

53

Vln. Vln. Vc.

This system contains measures 53 and 54. The first violin part (Vln.) continues its melodic line with eighth and sixteenth notes. The second violin part (Vln.) and the cello part (Vc.) continue their accompaniment.

55

Vln. Vln. Vc.

This system contains measures 55 and 56. In measure 55, the first violin part (Vln.) has a melodic line that ends with a fermata. In measure 56, the first violin part is silent, while the second violin part (Vln.) and the cello part (Vc.) continue their accompaniment.

57

Vln. Vln. Vc.

This system contains measures 57 through 61. The first violin part (Vln.) has a melodic line with a fermata in measure 57. The second violin part (Vln.) and the cello part (Vc.) have a sustained accompaniment consisting of chords and single notes.

Pierre dit Mery , Olivier-Trio pour cordes ndeg1

Violin

♩ = 91,000229

9

♩ = 79,999786

16

18

22

29

♩ = 79,999786

35

37

41

♩ = 100,000168

48

♩ = 60,000000

V.S.

2

Violin

50



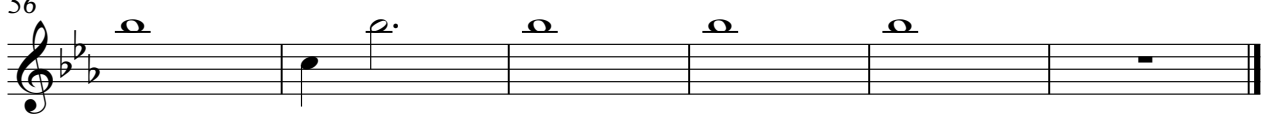
52



54



56



Pierre dit Mery , Olivier-Trio pour cordes ndeg1

Violin

♩ = 91,000229

9

♩ = 79,999786

16

18

22

31

♩ = 79,999786

36

38

♩ = 100,000168

44

♩ = 60,000000

49

V.S.

51



53



55



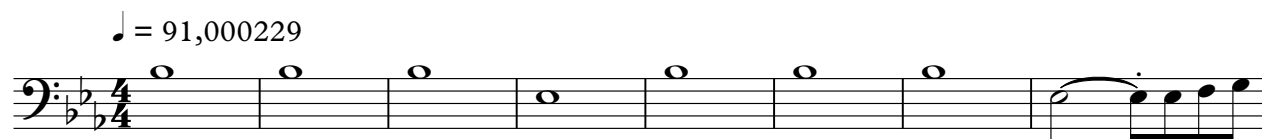
57



Pierre dit Mery , Olivier-Trio pour cordes ndeg1

Violoncello

♩ = 91,000229



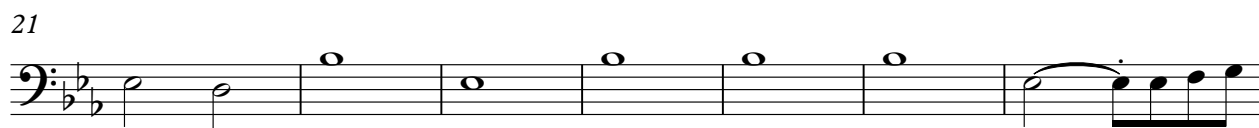
9 ♩ = 79,999780



16



21



28 ♩ = 79,999780



35



40 ♩ = 100,000168



46 ♩ = 60,000000



50



52



V.S.

2

Violoncello

54



56

