

Charpentier, Marc-Antoine-Stances du Cid [H.457]

Oboe

Kora

Kora

Measures 1-3 of the score. The Oboe part begins with a quarter rest followed by a melodic line of eighth notes. The upper Kora part plays chords, and the lower Kora part plays single notes.

4

Ob.

Kora

Kora

Measures 4-7 of the score. The Oboe part continues with a melodic line. The upper Kora part plays chords, and the lower Kora part plays a melodic line.

8

Ob.

Kora

Kora

Measures 8-11 of the score. The Oboe part has a melodic line with some rests. The upper Kora part plays chords, and the lower Kora part plays a melodic line.

11

Ob.

Kora

Kora

15

Ob.

Kora

Kora

19

Ob.

Kora

Kora

21

Ob.

Kora

Kora

Charpentier, Marc-Antoine-Stances du Cid [H.457]

Oboe



4



9



13



18

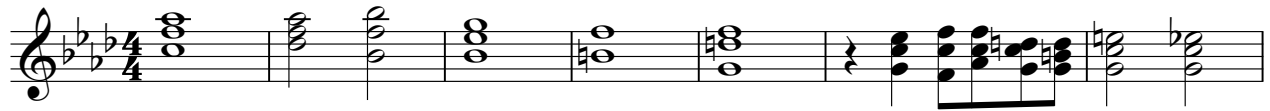


21



Charpentier, Marc-Antoine-Stances du Cid [H.457]

Kora



Charpentier, Marc-Antoine-Stances du Cid [H.457]

Kora

