

# Electric Light Orchestra - Above The Clouds

00:00:03:00

1.1,00

Above The Clouds by ELO Sequenced by Mike BOyce tinker@worldnet.att.net

$\text{♩} = 80,000000$

Musical score for Melody, Strings, and Cello. The score is in 4/4 time and B-flat major. The Melody part starts with a whole rest, followed by a quarter note G4, an eighth note F4, a quarter note E4, and a quarter note D4. The Strings part starts with a whole rest, followed by a quarter note G4, an eighth note F4, a quarter note E4, and a quarter note D4. The Cello part starts with a whole rest, followed by a quarter note G4, an eighth note F4, a quarter note E4, and a quarter note D4.



Musical score for Melody, Drums, Piano, Bass, Strings, and Cello. The score is in 4/4 time and B-flat major. The Melody part starts with a whole rest, followed by a quarter note G4, an eighth note F4, a quarter note E4, and a quarter note D4. The Drums part starts with a whole rest, followed by a quarter note G4, an eighth note F4, a quarter note E4, and a quarter note D4. The Piano part starts with a whole rest, followed by a quarter note G4, an eighth note F4, a quarter note E4, and a quarter note D4. The Bass part starts with a whole rest, followed by a quarter note G4, an eighth note F4, a quarter note E4, and a quarter note D4. The Strings part starts with a whole rest, followed by a quarter note G4, an eighth note F4, a quarter note E4, and a quarter note D4. The Cello part starts with a whole rest, followed by a quarter note G4, an eighth note F4, a quarter note E4, and a quarter note D4.

9

Melody

Drums

Piano

Bass

Cello



12

Melody

Whistle

Drums

Piano

Bass

Cello

14

Melody

Whistle

Drums

Piano

Bass

Cello

Detailed description: This system contains measures 14 and 15. The Melody part (treble clef) features a melodic line with a triplet of eighth notes in measure 15. The Whistle part (treble clef) has a rhythmic pattern of eighth notes. The Drums part (percussion clef) shows a simple drum pattern. The Piano part (treble clef) plays a steady accompaniment of eighth notes. The Bass and Cello parts (bass clef) play a simple eighth-note bass line.



16

Melody

Whistle

Drums

Piano

Bass

Strings

Cello

Detailed description: This system contains measures 16 and 17. The Melody part (treble clef) has a melodic line with a triplet of eighth notes in measure 16. The Whistle part (treble clef) has a rhythmic pattern with a triplet in measure 16. The Drums part (percussion clef) features a drum pattern with a sixteenth-note roll in measure 17. The Piano part (treble clef) plays a steady accompaniment of eighth notes. The Bass and Cello parts (bass clef) play a simple eighth-note bass line. The Strings part (bass clef) has a melodic line in measure 17.

18

Melody

Drums

Piano

Bass

Strings

Cello



21

6

Melody

Drums

Piano

Bass

Strings

Cello

24

Melody

Drums

Piano

Bass

Strings

Cello



27

Melody

Whistle

Drums

Piano

Bass

Cello

6

29

Melody

Whistle

Drums

Piano

Bass

Cello



32

Melody

Drums

Piano

Bass

Cello

35

Melody

Whistle

Drums

Piano

Bass

Cello

3

6

Detailed description: This block contains the musical score for measures 35 and 36. The score is arranged in a system with six staves: Melody, Whistle, Drums, Piano, Bass, and Cello. The key signature is B-flat major (two flats). Measure 35 starts with a rest in the Melody staff, followed by a quarter note G4, a quarter note A4, and a quarter note B4. The Whistle staff has a rest, followed by a triplet of eighth notes (B4, A4, G4) and a quarter note F#4. The Drums staff has a quarter note G4, a quarter note A4, and a quarter note B4. The Piano staff has a quarter note G4, a quarter note A4, and a quarter note B4. The Bass and Cello staves have a quarter note G4, a quarter note A4, and a quarter note B4. Measure 36 starts with a quarter note G4, a quarter note A4, and a quarter note B4. The Whistle staff has a quarter note G4, a quarter note A4, and a quarter note B4. The Drums staff has a quarter note G4, a quarter note A4, and a quarter note B4. The Piano staff has a quarter note G4, a quarter note A4, and a quarter note B4. The Bass and Cello staves have a quarter note G4, a quarter note A4, and a quarter note B4.



37

Melody

Whistle

Drums

Piano

Bass

Cello

3

Detailed description: This block contains the musical score for measures 37 and 38. The score is arranged in a system with six staves: Melody, Whistle, Drums, Piano, Bass, and Cello. The key signature is B-flat major (two flats). Measure 37 starts with a quarter note G4, a quarter note A4, and a quarter note B4. The Whistle staff has a quarter note G4, a quarter note A4, and a quarter note B4. The Drums staff has a quarter note G4, a quarter note A4, and a quarter note B4. The Piano staff has a quarter note G4, a quarter note A4, and a quarter note B4. The Bass and Cello staves have a quarter note G4, a quarter note A4, and a quarter note B4. Measure 38 starts with a quarter note G4, a quarter note A4, and a quarter note B4. The Whistle staff has a quarter note G4, a quarter note A4, and a quarter note B4. The Drums staff has a quarter note G4, a quarter note A4, and a quarter note B4. The Piano staff has a quarter note G4, a quarter note A4, and a quarter note B4. The Bass and Cello staves have a quarter note G4, a quarter note A4, and a quarter note B4.

38

Melody

Whistle

Drums

Piano

Bass

Cello



40

Melody

Drums

Piano

Bass

Chours

Cello



43

Melody  
Drums  
Piano  
Bass  
Chours  
Cello

Detailed description: This system of music covers measures 43, 44, and 45. The Melody line (treble clef) starts with a dotted quarter note G4, followed by eighth notes A4 and B4, a quarter note C5, and a half note D5. The Drums line (percussion clef) features a steady eighth-note pattern. The Piano line (treble clef) plays a dense block chord accompaniment. The Bass line (bass clef) has a simple eighth-note pattern. The Chours line (bass clef) has a complex accompaniment with a long note in measure 44. The Cello line (bass clef) mirrors the bass line.



46

Melody  
Drums  
Piano  
Bass  
Chours  
Strings  
Cello

Detailed description: This system of music covers measures 46, 47, and 48. The Melody line (treble clef) begins with a quarter rest, followed by eighth notes G4 and A4, a quarter note B4, and a dotted quarter note C5. The Drums line (percussion clef) continues with the eighth-note pattern. The Piano line (treble clef) maintains the block chord accompaniment. The Bass line (bass clef) continues with the eighth-note pattern. The Chours line (bass clef) has a complex accompaniment with a long note in measure 46. The Strings line (bass clef) has a complex accompaniment with a long note in measure 46. The Cello line (bass clef) mirrors the bass line.

49

Melody

Drums

Piano

Bass

Strings

Cello



52 ♩ = 80,000000

Whistle

Drums

Piano

Lead Guitar

Bass

Chours

Strings

Cello

♩ = 80,000000

# Electric Light Orchestra - Above The Clouds

## Melody

♩ = 80,000000

6

♩ = 40,000000 ♩ = 112,000061

10

15

20

25

30

34

39

44

V.S.

2

Melody

♩ = 80,000000

48

**6**

# Electric Light Orchestra - Above The Clouds

## Whistle

♩ = 80,000000      ♩ = 40,00000000061

6      5      3.

14      3

17      9      6

28      4

35      3.

37      3

39      12      5      ♩ = 80,000000

# Electric Light Orchestra - Above The Clouds

## Drums

♩ = 80,000000      ♩ = 40,000000 ♩ = 112,000061

6

11

17

22

28

33

38

43

48

51

6

5

Piano

Electric Light Orchestra - Above The Clouds

♩ = 80,000000      ♩ = 40,00000000000061

**6**

11

15

18

22

26

30

34

37

40

V.S.

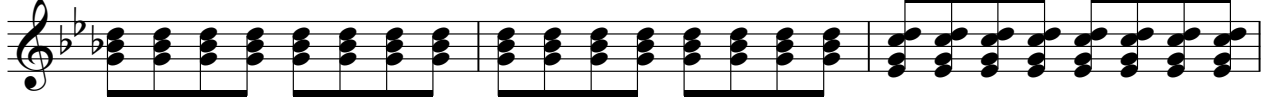
2

Piano

44

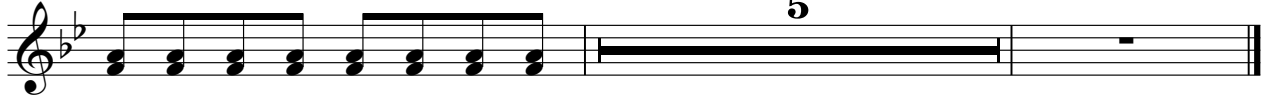


48



51

♩ = 80,000000





# Electric Light Orchestra - Above The Clouds

## Lead Guitar

♩ = 80,000000      ♩ = 40,000000000061      ♩ = 80,000000

6      44

53

53

# Electric Light Orchestra - Above The Clouds

Bass

♩ = 80,000000

♩ = 40,000000,000061

6



11



16



21



26



31



36



41



46



50

♩ = 80,000000

5



# Electric Light Orchestra - Above The Clouds

## Chours

♩ = 80,000000      ♩ = 40,0000000061

**6**      **32**

42

47

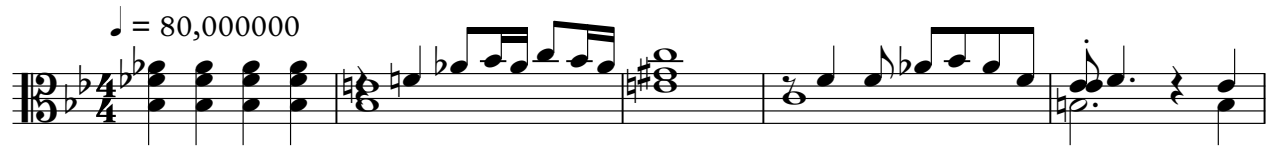
♩ = 80,000000

**4**      **5**

# Electric Light Orchestra - Above The Clouds

Strings

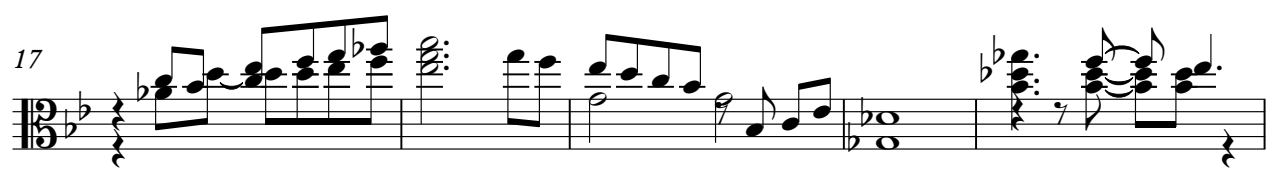
$\text{♩} = 80,000000$



6  $\text{♩} = 40,000000 = 112,000061$  8



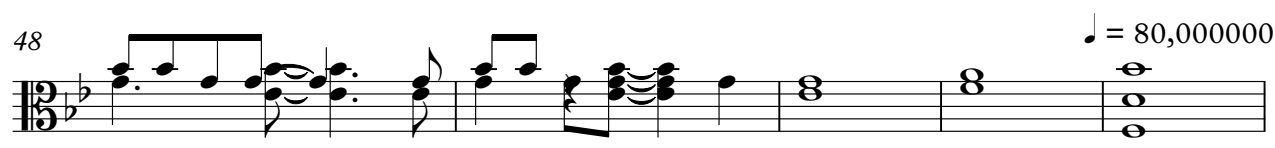
17



22 22



48  $\text{♩} = 80,000000$



53



# Electric Light Orchestra - Above The Clouds

Cello

♩ = 80,000000

♩ = 40,000000



8 ♩ = 112,000061



13



18



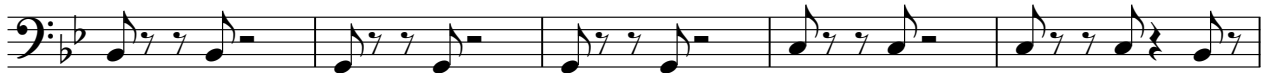
23



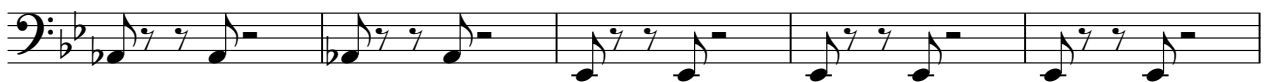
28



33



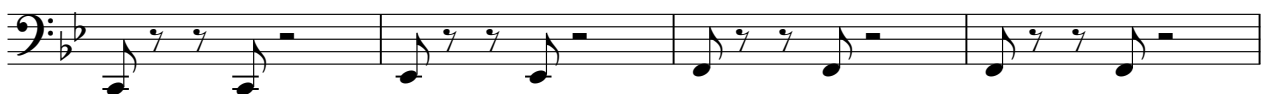
38



43



48



V.S.

2

Cello

52 ♩ = 80,000000

Musical notation for Cello, measure 52. The notation is on a single staff with a bass clef and a key signature of one flat (B-flat). The measure contains a whole rest, followed by a quarter note G2, a quarter note F2, a quarter note E2, and a quarter note D2. A fermata is placed over the D2 note, which is then followed by a quarter rest. The measure ends with a double bar line.