

Daneels, Pierre-Paul-Valse 9 pour deux pianos

♩ = 150,000000

Solo

Solo

Solo

Solo

7

Solo

Solo

Solo

Solo

13

♩ = 139,999817 ♩ = 130,000137 ♩ = 150,000000

Solo

Solo

Solo

Solo

18

Solo

Solo

Solo

Solo

24

Solo

Solo

Solo

Solo

29

Solo

Solo

Solo

Solo

34

Solo

Musical notation for measures 34-39, consisting of four staves. The top staff (labeled 'Solo') features a melodic line with notes G4, A4, B4, C5, B4, A4, G4, F4, E4, D4, C4, and B3. The second staff has a rhythmic accompaniment of eighth notes. The third and fourth staves provide harmonic support with chords and moving lines.

40

Solo

Musical notation for measures 40-44, consisting of four staves. The top staff (labeled 'Solo') continues the melodic line with notes D4, C4, B3, A3, G3, F3, E3, D3, C3, and B2. The accompaniment continues with eighth-note patterns and harmonic support.

45

Solo

Musical notation for measures 45-49, consisting of four staves. The top staff (labeled 'Solo') features a melodic line with notes G3, F3, E3, D3, C3, B2, A2, G2, F2, E2, D2, and C2. The accompaniment continues with eighth-note patterns and harmonic support.

50

Solo

Musical notation for measures 50-55, consisting of four staves. The top staff (labeled 'Solo') features a melody with a half note, followed by quarter notes, and a dotted half note. The second staff has a rhythmic accompaniment of eighth notes. The third staff has a melody with quarter notes and a dotted half note. The fourth staff has a rhythmic accompaniment of eighth notes. The key signature has one sharp (F#).

56

Solo

Musical notation for measures 56-60, consisting of four staves. The top staff (labeled 'Solo') features a melody with quarter notes. The second staff has a rhythmic accompaniment of eighth notes. The third staff has a melody with quarter notes and a dotted half note. The fourth staff has a rhythmic accompaniment of eighth notes. The key signature has one sharp (F#).

61 ♩ = 139,999817 ♩ = 130,000137 ♩ = 150,000000

Solo

Musical notation for measures 61-65, consisting of four staves. The top staff (labeled 'Solo') features a melody with quarter notes and a dotted half note. The second staff has a rhythmic accompaniment of eighth notes. The third staff has a melody with a half note and a dotted half note. The fourth staff has a rhythmic accompaniment of eighth notes. The key signature has one sharp (F#).

66

Solo

71

Solo

77 ♩ = 139,999817 ♩ = 130,000137 ♩ = 150,000000

Solo

99

Solo

Solo

Solo

Solo

105

Solo

Solo

Solo

Solo

Solo

110

Solo

Solo

Solo

Solo

Solo

Solo Daneels, Pierre-Paul-Valse 9 pour deux pianos

♩ = 150,000000

9

15 ♩ = 139,998,170 ♩ = 150,000000

23

29

37

45

54

61 ♩ = 139,998,170 ♩ = 130,000,137 ♩ = 150,000000

68

V.S.

2

Solo

♩ = 139,999817 = ♪ = 130,5000000

75



82



89



96



105



114

♩ = 145,000031



122

♩ = 135,000137 ♩ = 124,999741 ♩ = 120,000000 ♩ = 115,000252



Solo Daneels, Pierre-Paul-Valse 9 pour deux pianos

♩ = 150,000000

8 $\text{♩} = 139,999817$

16 $\text{♩} = 130,000137$ $\text{♩} = 150,000000$

24

32

38

45

51

57 $\text{♩} = 139,999817$ $\text{♩} = 130,000137$ $\text{♩} = 150,000000$

64

V.S.

♩ = 139,999817 ♩ = 130,000183

72

80

88

95

101

108

114

121 ♩ = 145,000031 ♩ = 135,000137 ♩ = 124,999741 ♩ = 120,000000

125 ♩ = 115,000252

Solo Daneels, Pierre-Paul-Valse 9 pour deux pianos

♩ = 150,000000

8

15 ♩ = 139,999817 ♩ = 130,000137 ♩ = 150,000000

22

29

36

43

49

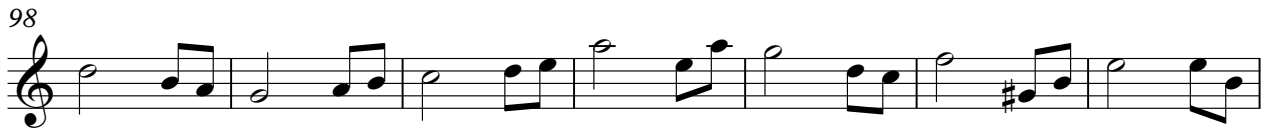
56 ♩ = 139,999817 ♩ = 130,0001

63 ♩ = 150,000000

V.S.



77 ♩ = 139,999817 ♩ = 130,000137 ♩ = 150,000000



123 ♩ = 124,999741 ♩ = 120,000000 ♩ = 115,000252



Solo Daneels, Pierre-Paul-Valse 9 pour deux pianos

♩ = 150,000000

8

♩ = 139,999817

16

♩ = 130,000137 ♩ = 150,000000

24

32

38

45

51

57

♩ = 139,999817 ♩ = 130,000137 ♩ = 150,000000

64

V.S.

♩ = 139,999817 ♩ = 130,000183

72

80

88

95

101

108

114

121 ♩ = 145,000031 ♩ = 135,000137 ♩ = 124,999741 ♩ = 120,000000

125 ♩ = 115,000252