

Whistle for the choir

0.0"
1.1,00
Intro

♩ = 135,000137

Drum

Guitar 1

Guitar 2

Mandolin

Bass

Guitar 1

Guitar 1

Guitar 1

Guitar 1

Guitar 1

Guitar 2

9.00
First Verse

18

Guitar 1

Guitar 2

20

Guitar 1

Guitar 2

22

Drum

Guitar 1

Guitar 2

Bass

42.6"
25.1,00
First Chorus

25

Drum

Guitar 1

Guitar 2

Bass

28

Drum

Guitar 1

Guitar 2

Bass

Detailed description: This system covers measures 28 and 29. The drum part features a consistent pattern of eighth notes on the snare and bass drums. The guitar parts are highly complex, with many beamed notes and accidentals. The bass line is a simple eighth-note pattern.

30

Drum

Guitar 1

Guitar 2

Bass

Detailed description: This system covers measures 30, 31, and 32. The drum part continues with the same eighth-note pattern. The guitar parts show more intricate phrasing and some sustained notes. The bass line remains consistent with the previous system.

33

Drum

Guitar 1

Guitar 2

Bass

Detailed description: This system covers measures 33, 34, and 35. The drum part has a slight variation in the snare pattern. The guitar parts include a triplet of eighth notes in measure 34, marked with a '3' above the notes. The bass line continues with its eighth-note pattern.

36

Drum

Guitar 1

Guitar 2

Bass

Detailed description: This system contains measures 36 and 37. The drum part features a consistent pattern of eighth notes on the snare and bass drums. Guitar 1 plays a complex, fast-moving line with many accidentals. Guitar 2 plays a similar line, often in unison with Guitar 1. The bass line is a simple, steady eighth-note pattern.

38

Drum

Guitar 1

Guitar 2

Bass

Detailed description: This system contains measures 38, 39, and 40. The drum part continues with the same eighth-note pattern. In measure 39, there is a double bar line with a star symbol. In measure 40, there is a double bar line with a star and a circled 'X' symbol. Guitar 1 and 2 continue their complex melodic lines. The bass line remains steady.

41

1'11.1"
41.1,00
Break

Drum

Guitar 1

Guitar 2

Bass

Detailed description: This system contains measures 41, 42, and 43. A box at the top left indicates a time signature change to 1'11.1" and a tempo of 41.1,00, with the word 'Break' below it. A double bar line with a star symbol is at the start of measure 41. The drum part continues. In measure 43, there is a triplet of eighth notes in both Guitar 1 and Guitar 2, marked with a '3' above the notes. The bass line continues with its steady eighth-note pattern.

43

Drum

Guitar 1

Guitar 2

Bass

This system contains measures 43 and 44. The drum part features a consistent pattern of eighth notes with 'x' marks above them, indicating muffled drums. The guitar parts are complex, with many beamed notes and accidentals. The bass part has a steady eighth-note rhythm. Measure 44 includes a triplet of eighth notes in both Guitar 1 and Bass.

45

Drum

Guitar 1

Guitar 2

Bass

This system contains measures 45 and 46. The drum part continues with the muffled eighth-note pattern. The guitar parts feature dense chordal textures and melodic lines. The bass part maintains its eighth-note accompaniment. Measure 46 has a double bar line at the end.

48

1'25.3"
49.1,00
Second Verse

Drum

Guitar 1

Guitar 2

Bass

This system contains measures 48 and 49. A text box above the system indicates a time signature change to 1'25.3" and a tempo of 49.1,00, marking the start of the 'Second Verse'. The drum part changes to a pattern of quarter notes with 'x' marks. The guitar parts are highly active with many beamed notes. The bass part continues with eighth notes. Measure 49 includes a triplet of eighth notes in the Bass.

51

Drum

Guitar 1

Guitar 2

Bass

Detailed description: This system covers measures 51 and 52. The drum part features a consistent pattern of eighth notes on the snare and bass drums. Guitar 1 plays a complex, fast-moving line with many beamed notes and a triplet of eighth notes in measure 52. Guitar 2 provides a steady accompaniment with chords and single notes. The bass line is simple, consisting of quarter and eighth notes.

53

Drum

Guitar 1

Guitar 2

Bass

Detailed description: This system covers measures 53 and 54. The drum part continues with a steady eighth-note pattern. Guitar 1 has a very active line with many beamed notes and a triplet of eighth notes in measure 54. Guitar 2 continues with its accompaniment. The bass line remains simple with quarter and eighth notes.

56

Drum

Guitar 1

Guitar 2

Bass

Detailed description: This system covers measures 55 and 56. The drum part has a more varied pattern, including a triplet of eighth notes in measure 55 and a double bar line in measure 56. Guitar 1 has a triplet of eighth notes in measure 55 and continues with a complex line. Guitar 2 and the bass line continue with their respective parts.

58

Drum

Guitar 1

Guitar 2

Bass

This system contains measures 58 and 59. The Drum part features a consistent pattern of eighth notes with 'x' marks above them, indicating muted notes. Guitar 1 and 2 play complex, multi-voiced chords with various accidentals (sharps and naturals). A triplet of eighth notes is marked with a '3' in both guitar parts. The Bass part provides a steady accompaniment with quarter and eighth notes.

60

Drum

Guitar 1

Guitar 2

Bass

This system contains measures 60 and 61. The Drum part continues with the eighth-note pattern, but includes a double bar line with a repeat sign in measure 61. Guitar 1 and 2 continue with their complex chordal textures, featuring a triplet in measure 60. The Bass part maintains its accompaniment role.

62

Drum

Guitar 1

Guitar 2

Bass

This system contains measures 62 and 63. The Drum part continues with the eighth-note pattern. Guitar 1 and 2 play complex chords, with a triplet in measure 63. The Bass part continues with its accompaniment.

1'53.7"
65.1,00
Second Chorus

65

Drum

Guitar 1

Guitar 2

Bass

3

Detailed description: This system covers measures 65 to 67. The drum part features a consistent pattern of eighth notes with 'x' marks above them, indicating muted or choked sounds. The guitar parts are complex, with many beamed notes and accidentals. A triplet of eighth notes is marked with a '3' above it in both the Guitar 1 and Guitar 2 staves. The bass line consists of quarter and eighth notes with some rests.

68

Drum

Guitar 1

Guitar 2

Bass

Detailed description: This system covers measures 68 and 69. The drum part continues with the eighth-note pattern, including some rests. The guitar parts feature more intricate chordal and melodic lines. The bass line continues with quarter and eighth notes.

70

Drum

Guitar 1

Guitar 2

Bass

Detailed description: This system covers measures 70 and 71. The drum part shows a variation in the eighth-note pattern. The guitar parts have dense chordal textures. The bass line continues with quarter and eighth notes.

72

Drum

Guitar 1

Guitar 2

Bass

This system contains measures 72, 73, and 74. The drum part features a consistent pattern of eighth notes with 'x' marks above them, indicating muted notes. The guitar parts are highly complex, with many beamed notes and triplets. The bass part consists of a steady eighth-note line.

75

Drum

Guitar 1

Guitar 2

Bass

This system contains measures 75 and 76. The drum part continues with eighth notes and 'x' marks. The guitar parts feature more intricate phrasing with many beamed notes and triplets. The bass part continues with eighth notes.

77

Drum

Guitar 1

Guitar 2

Bass

This system contains measures 77, 78, and 79. The drum part includes a double bar line in measure 78, followed by a final measure with a double bar line and a circled 'X' symbol. The guitar parts are dense with beamed notes and triplets. The bass part continues with eighth notes.

2'22.2"
81.1,00
ahi se pone a chiflar

81

Drum

Guitar 1

Guitar 2

Bass

Detailed description: This system covers measures 81 to 83. The drum part features a consistent pattern of eighth notes with 'x' marks above them, indicating a specific drum sound. The guitar parts are complex, with many beamed notes and triplets. The bass line consists of quarter notes and eighth notes.

84

Drum

Guitar 1

Guitar 2

Bass

Detailed description: This system covers measures 84 to 86. The drum part has a more varied pattern, including some rests and eighth notes. The guitar parts are highly intricate, featuring many triplets and beamed sixteenth notes. The bass line continues with a steady eighth-note pattern.

87

Drum

Guitar 1

Guitar 2

Bass

Detailed description: This system covers measures 87 to 89. The drum part has a pattern of eighth notes with 'x' marks. The guitar parts are dense with beamed notes and triplets. The bass line is a steady eighth-note accompaniment.

2'36.4"
89.1,00
Mandolin!!!

89

Drum

Guitar 2

Mandolin

Bass

6 6 6 6

3

Detailed description: This system covers measures 89 and 90. The drum part features a consistent pattern of quarter notes on the snare and bass drum. The guitar 2 part is a complex, multi-measure solo with many beamed notes and ties. The mandolin part consists of sixteenth-note runs, with a triplet of eighth notes in measure 90. The bass part provides a steady accompaniment with quarter notes.

91

Drum

Guitar 2

Mandolin

Bass

6 6 6 6

Detailed description: This system covers measures 91 and 92. The drum part continues with the same pattern. The guitar 2 part continues its complex solo with various chordal textures and melodic lines. The mandolin part maintains its sixteenth-note pattern. The bass part continues with quarter notes.

93

Drum

Guitar 2

Mandolin

Bass

6 6 6 6

Detailed description: This system covers measures 93 and 94. The drum part remains consistent. The guitar 2 part continues with intricate playing. The mandolin part continues with sixteenth-note runs. The bass part continues with quarter notes.

95

Drum

Guitar 2

Mandolin

Bass

6

6

6

6

6

3

Detailed description: This system covers measures 95 to 98. The drum part features a consistent pattern of quarter notes. The guitar 2 part consists of chords, with a triplet of eighth notes in measure 98. The mandolin part has sixteenth-note runs, with sixteenth-note groupings of six notes in measures 95, 96, 97, and 98. The bass part provides a simple harmonic foundation with quarter notes.

2'50.6"
97.1,00
Final Chorus

97

Drum

Guitar 2

Mandolin

Bass

6

6

6

6

3

Detailed description: This system covers measures 97 to 100. A box at the top left indicates a time signature change to 2/50.6" and a tempo of 97.1,00, marking the start of the 'Final Chorus'. The drum part continues with quarter notes. The guitar 2 part features more complex chordal textures and melodic lines. The mandolin part has sixteenth-note runs with sixteenth-note groupings of six notes in measures 97, 98, 99, and 100. The bass part continues with quarter notes.

99

Drum

Guitar 2

Mandolin

Bass

6

6

6

6

Detailed description: This system covers measures 99 to 102. The drum part continues with quarter notes. The guitar 2 part features complex chordal textures and melodic lines. The mandolin part has sixteenth-note runs with sixteenth-note groupings of six notes in measures 99, 100, 101, and 102. The bass part continues with quarter notes.

101

Drum

Guitar 2

Mandolin

Bass

This system contains measures 101 and 102. It features four staves: Drum, Guitar 2, Mandolin, and Bass. The Drum staff shows a consistent rhythmic pattern of quarter notes. The Guitar 2 staff has a melodic line with slurs and ties. The Mandolin staff has a rhythmic line with sixteenth notes and is marked with a '6' (sixteenth notes) in four measures. The Bass staff has a simple bass line with quarter notes.

103

Drum

Guitar 2

Mandolin

Bass

This system contains measures 103 and 104. It features four staves: Drum, Guitar 2, Mandolin, and Bass. The Drum staff has a more complex rhythmic pattern, including eighth notes and a triplet of eighth notes in measure 104. The Guitar 2 staff has a melodic line with slurs and ties. The Mandolin staff has a rhythmic line with sixteenth notes and is marked with a '6' (sixteenth notes) in four measures. The Bass staff has a simple bass line with quarter notes.

105

Drum

Guitar 2

Mandolin

Bass

This system contains measures 105 and 106. It features four staves: Drum, Guitar 2, Mandolin, and Bass. The Drum staff has a consistent rhythmic pattern of quarter notes. The Guitar 2 staff has a melodic line with slurs and ties. The Mandolin staff has a rhythmic line with sixteenth notes and is marked with a '6' (sixteenth notes) in four measures. The Bass staff has a simple bass line with quarter notes.

107

Drum

Guitar 2

Mandolin

Bass

6 6 6 6

Detailed description: This system covers measures 107 to 110. The drum part features a consistent pattern of quarter notes on the snare and bass drums. The guitar 2 part is a complex melodic line with many accidentals and slurs. The mandolin part consists of sixteenth-note runs, with the first two measures of each pair of measures containing sixteenth-note chords. The bass part provides a simple harmonic foundation with quarter notes.

109

Drum

Guitar 2

Mandolin

Bass

6 6 6 6

Detailed description: This system covers measures 109 to 112. The drum part continues with the same pattern as the previous system. The guitar 2 part continues its complex melodic line. The mandolin part continues with sixteenth-note runs and chords. The bass part continues with quarter notes.

111

Drum

Guitar 2

Mandolin

Bass

6 6

Detailed description: This system covers measures 111 to 114. The drum part has a more varied pattern, including some rests and longer note values. The guitar 2 part features a series of chords and melodic fragments. The mandolin part continues with sixteenth-note runs and chords. The bass part continues with quarter notes.

Whistle for the choir

Drum

♩ = 135,000137

23

27

32

37

42

46

50

55

59

64

V.S.

Drum

68

73

78

83

87

92

96

100

104

108

Detailed description: This image shows ten staves of drum notation, numbered 68 through 108. Each staff contains rhythmic notation for a drum set, including various note values, rests, and articulation marks. The notation is organized into measures, with measure numbers 68, 73, 78, 83, 87, 92, 96, 100, 104, and 108 explicitly labeled at the beginning of their respective staves. The notation includes a variety of rhythmic patterns, such as eighth notes, sixteenth notes, and triplets, as well as rests and dynamic markings. The drum set is represented by a standard five-line staff with a double bar line at the top. The notation is written in a clear, professional style, typical of a music score.

111 *Drum* 3

The image shows a musical score for a guitar piece, specifically measure 111. The notation is written on a single staff. The first part of the measure contains a sequence of notes: a dotted quarter note, an eighth note, a quarter note, a dotted quarter note, an eighth note, and a quarter note. Above the staff, there are several drum notation symbols: a star with a vertical line, a star with a vertical line and a dot, a star with a vertical line and a slur, and a star with a vertical line. A large number '3' is positioned above the staff towards the right end. The piece concludes with a double bar line.

Whistle for the choir

Guitar 1

♩ = 135,000137

The musical score for Guitar 1 is written in 4/4 time with a key signature of one sharp (F#). It consists of ten staves of music, each starting with a measure number: 4, 7, 11, 14, 18, 20, 23, 27, and 30. The music is characterized by complex chordal textures and frequent triplets, indicated by a '3' above a bracketed group of notes. The notation includes various rhythmic values such as eighth and sixteenth notes, as well as rests. The piece concludes with a double bar line at the end of the final staff.

V.S.

Guitar 1

Musical score for Guitar 1, measures 34-62. The score is written in treble clef with a key signature of two sharps (F# and C#). It features a complex, rhythmic melody with frequent triplets and sixteenth-note patterns. The notation includes various articulations such as slurs, accents, and dynamic markings. Measure numbers 34, 36, 39, 43, 46, 50, 52, 55, 59, and 62 are indicated at the beginning of their respective staves. The piece concludes with a final chord in measure 62.

Guitar 1

3

66

3

68

71

75

78

83

86

27

Whistle for the choir

Guitar 2

♩ = 135,000137

16

23

31

39

45

52

58

65

72

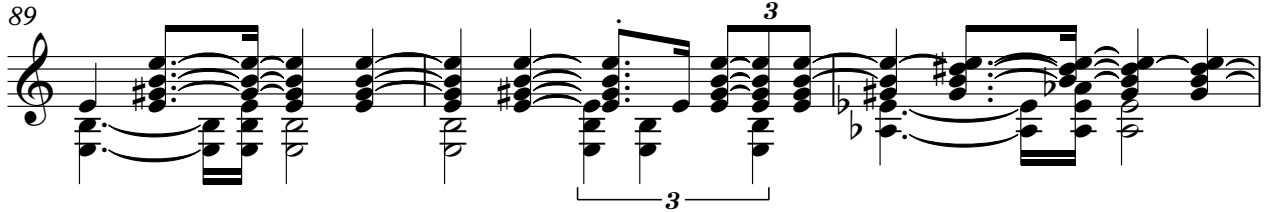
79

V.S.

85



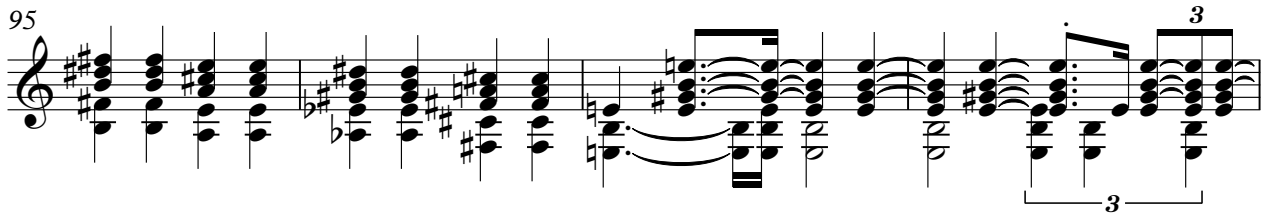
89



92



95



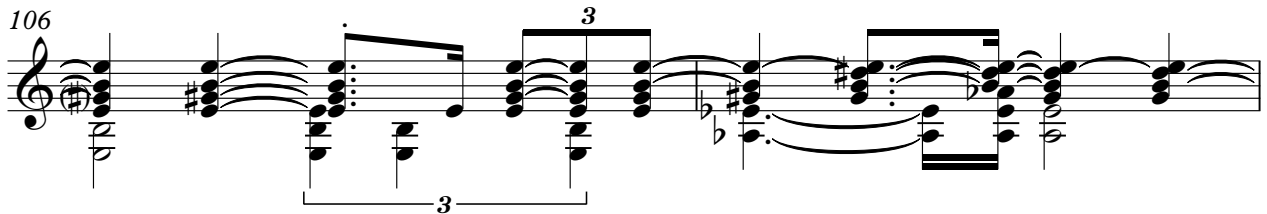
99



102



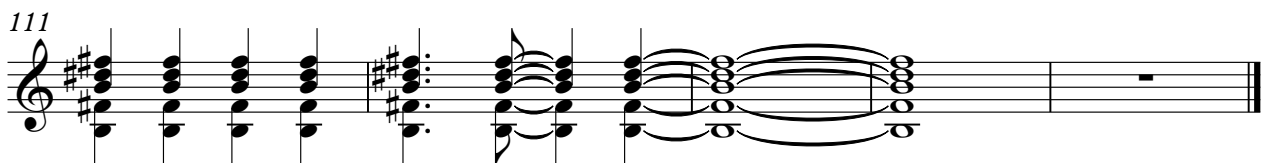
106



108



111



Whistle for the choir

Mandolin

♩ = 135,000137

88

91

94

97

100

103

106

109

111

Whistle for the choir

Bass

♩ = 135,000137

23



28



33



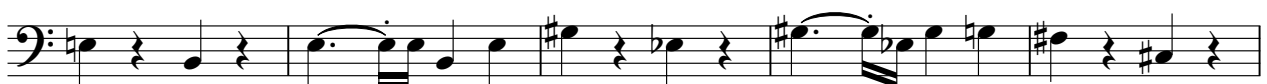
38



44



49



54



59



64



69



V.S.

74



79



85



90



96



102



108



111

