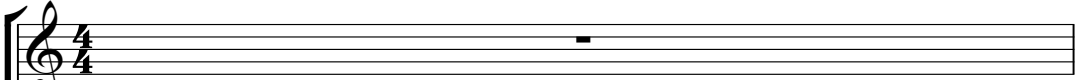
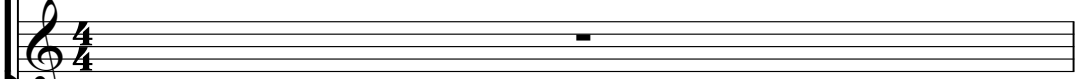



Air_Supply-Keeping_The_Love_Alive

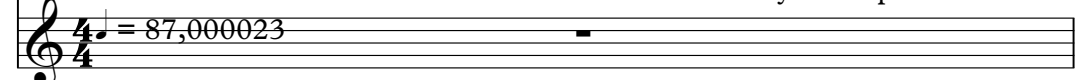
♩ = 87,000023

Overdrive Gtr. 

>>GTR 1 

text 

KEEPING THE LOVE ALIVE AIR SUPPLY Written by R.Supa

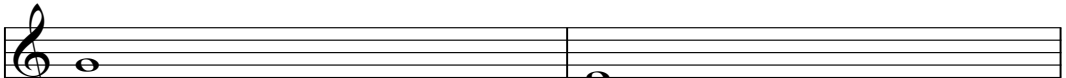
>>PIANO 


♩ = 87,000023



2.7"
2.1,00
Intro

2

Strings 

>>PIANO 



4

HH 

text 

Strings 

>>PIANO 

>>MELODY

>>DRUMS

>>GTR 1

Acou Bass Bkp

>>BASS

text

fall in love and lose a gain We've

>>PIANO

>>MELODY ¹⁰

Musical staff for MELODY, starting at measure 10. The staff contains a sequence of eighth and quarter notes with various rests.

>>DRUMS

Musical staff for DRUMS, showing a drum set configuration with a snare drum (S) and a hi-hat (HH). The notation includes quarter notes and rests.

HH

Musical staff for HH (Hi-Hat), showing a drum set configuration with a snare drum (S) and a hi-hat (HH). The notation includes quarter notes and rests.

>>GTR 1

Musical staff for GTR 1 (Guitar 1), showing a treble clef staff with a long note and a rest.

Acou Bass Bkp

Musical staff for Acou Bass Bkp (Acoustic Bass Backing), showing a bass clef staff with a sequence of notes and rests.

>>BASS

Musical staff for BASS, showing a bass clef staff with a sequence of notes and rests.

text

Musical staff for text, showing a treble clef staff with notes and rests corresponding to the lyrics.

both been hurt be fore saw love walk out the door

>>PIANO

Musical staff for PIANO, showing a treble clef staff with a sequence of chords and notes.

12

>>MELODY

>>DRUMS

HH

Toms

Acou Bass Bkp

>>BASS

text

in the end

Strings

>>PIANO

35.8"
14.1,00

14

>>MELODY

Musical staff for MELODY in treble clef. The notation includes eighth and quarter notes with rests, spanning two measures.

>>DRUMS

Musical staff for DRUMS in a drum clef. It shows a sequence of notes representing a drum pattern.

HH

Musical staff for HH (Hi-Hat) in a drum clef, showing a series of 'x' marks representing hits.

Side Stick

Musical staff for Side Stick in a drum clef, showing notes and 'x' marks representing side stick patterns.

Acou Bass Bkp

Musical staff for Acou Bass Bkp in bass clef, showing a simple bass line.

>>BASS

Musical staff for >>BASS in bass clef, showing a simple bass line.

text

Musical staff for text in treble clef, showing a vocal line with lyrics.

Act in' as cold as ice when we wan na be it's

Strings

Musical staff for Strings in treble clef, showing a sustained chord with a fermata.

>>PIANO

Musical staff for >>PIANO in treble clef, showing a complex piano accompaniment with chords and eighth notes.

>>MELODY

>>DRUMS

HH

Side Stick

Acou Bass Bkp

>>BASS

text

just a fool ish game we play You could n't

Strings

>>PIANO

18

>>MELODY

>>DRUMS

HH

Side Stick

Acou Bass Bkp

>>BASS

text

hurt me bad e nough to make me give it up and

Strings

>>PIANO

Detailed description of the musical score: The score is for measures 18 and 19. The Melody part is in treble clef with a key signature of one flat (Bb). The drum parts include HH (Hi-Hat) with 'x' marks for hits, and Side Stick with specific rhythmic notations. The Acoustic Bass Backup and Bass parts are in bass clef. The text part is in treble clef with lyrics: 'hurt me bad e nough to make me give it up and'. The Strings part features a long, sustained chord in the left hand. The Piano part is in treble clef with a rhythmic accompaniment.

20

>>MELODY

>>DRUMS

HH

Toms

Side Stick

Acou Bass Bkp

>>BASS

text

walk a way We

Strings

>>PIANO

22

>>MELODY

Snare

>>DRUMS

HH

Crash Cym

Overdrive Gtr.

Acou Bass Bkp

>>BASS

text

can't stop the feel ing's too strong

Strings

>>PIANO

24

>>MELODY

Snare

>>DRUMS

HH

Toms

Crash Cym

Overdrive Gtr.

Acou Bass Bkp

>>BASS

text

We've got the will to hang on

Strings

>>PIANO

26

>>MELODY

Snare

>>DRUMS

HH

Crash Cym

Overdrive Gtr.

Acou Bass Bkp

>>BASS

text

Can't stop we struggle and fight to survive

Strings

>>PIANO

28

>>MELODY

>>DRUMS

HH

Toms

Crash Cym

Overdrive Gtr.

Acou Bass Bkp

>>BASS

text

just Keep ing The Love A live

Strings

>>PIANO

1'19.9"
30.1,00

30

>>MELODY

>>DRUMS

HH

Crash Cym

Side Stick

Overdrive Gtr.

Acou Bass Bkp

>>BASS

Strings

>>PIANO

The musical score for page 14, measures 30-31, is presented in a multi-staff format. The staves are labeled as follows: >>MELODY (treble clef), >>DRUMS (drum set notation), HH (snare drum), Crash Cym (crash cymbal), Side Stick (side stick), Overdrive Gtr. (treble clef), Acou Bass Bkp (bass clef), >>BASS (bass clef), Strings (treble clef), and >>PIANO (treble clef). The >>PIANO part includes a piano roll at the bottom of the staff. The score is divided into two measures, 30 and 31. The tempo is marked as 1'19.9" and 30.1,00.

32

>>DRUMS

HH

Side Stick

Overdrive Gtr.

Acou Bass Bkp

>>BASS

text

Strings

>>PIANO

34

>>MELODY

Musical staff for MELODY in treble clef, showing a sequence of eighth and quarter notes.

>>DRUMS

Musical staff for DRUMS in treble clef, showing a sequence of quarter notes.

HH

Musical staff for HH in treble clef, showing a sequence of quarter notes with 'x' marks above them.

Side Stick

Musical staff for Side Stick in treble clef, showing a sequence of quarter notes with 'x' marks above them.

Acou Bass Bkp

Musical staff for Acou Bass Bkp in bass clef, showing a sequence of quarter notes.

>>BASS

Musical staff for >>BASS in bass clef, showing a sequence of quarter notes.

text

Musical staff for text in treble clef, showing a sequence of eighth notes.

Try to for get the past so man y times It's

Strings

Musical staff for Strings in treble clef, showing a sequence of whole notes.

>>PIANO

Musical staff for >>PIANO in treble clef, showing a sequence of eighth notes.

36

>>MELODY

Musical staff for MELODY, starting at measure 36. The staff contains a sequence of eighth notes, followed by a quarter note, a half note, and a quarter rest.

>>DRUMS

Musical staff for DRUMS, showing a rhythmic pattern of quarter notes.

HH

Musical staff for HH (Hi-Hat), showing a rhythmic pattern of quarter notes marked with 'x'.

Side Stick

Musical staff for Side Stick, showing a rhythmic pattern of quarter notes with various symbols.

Acou Bass Bkp

Musical staff for Acou Bass Bkp (Acoustic Bass Backup), showing a bass line with quarter notes.

>>BASS

Musical staff for >>BASS, showing a bass line with quarter notes.

text

Musical staff for text, showing a vocal line with lyrics.

hard to make those mem' ries leave

With

Strings

Musical staff for Strings, showing a sustained chord with a slur.

>>PIANO

Musical staff for >>PIANO, showing a piano accompaniment with chords and eighth notes.

38

>>MELODY

>>DRUMS

HH

Side Stick

Acou Bass Bkp

>>BASS

text

all we have at stake we'll bend un til we break 'cause we

Strings

>>PIANO

40

>>MELODY

>>DRUMS

HH

Toms

Side Stick

Acou Bass Bkp

>>BASS

text

both be lieve We

Strings

>>PIANO

42

>>MELODY

Musical staff for MELODY in treble clef. It contains two measures of music. The first measure starts with a whole note G4, followed by a quarter note A4, and a quarter note B4. The second measure contains a quarter note C5, a quarter note B4, a quarter note A4, and a quarter note G4, ending with a double bar line and a repeat sign.

Snare

Musical staff for Snare in treble clef. It contains two measures of music. The first measure has a quarter rest, followed by a quarter note G4, and a quarter note A4. The second measure has a quarter rest, followed by a quarter note G4, and a quarter note A4.

>>DRUMS

Musical staff for DRUMS in treble clef. It contains two measures of music. The first measure has a quarter note G4, a quarter note A4, and a quarter note B4. The second measure has a quarter note C5, a quarter note B4, and a quarter note A4.

HH

Musical staff for HH in treble clef. It contains two measures of music. The first measure has a series of eight eighth notes marked with 'x' (G4, A4, B4, C5, B4, A4, G4, F4). The second measure has a series of eight eighth notes marked with 'x' (G4, A4, B4, C5, B4, A4, G4, F4).

Crash Cym

Musical staff for Crash Cym in treble clef. It contains two measures of music. The first measure has a single eighth note marked with a circled 'x' (G4). The second measure has a single eighth note marked with a circled 'x' (G4).

Overdrive Gtr.

Musical staff for Overdrive Gtr. in treble clef. It contains two measures of music. The first measure has a whole rest. The second measure has a quarter note G4, a quarter note A4, and a quarter note B4.

Acou Bass Bkp

Musical staff for Acou Bass Bkp in bass clef. It contains two measures of music. The first measure has a quarter note G2, a quarter note A2, and a quarter note B2. The second measure has a quarter note C3, a quarter note B2, and a quarter note A2.

>>BASS

Musical staff for >>BASS in bass clef. It contains two measures of music. The first measure has a quarter note G2, a quarter note A2, and a quarter note B2. The second measure has a quarter note C3, a quarter note B2, and a quarter note A2.

text

Musical staff for text in treble clef. It contains two measures of music. The first measure has a quarter note G4, a quarter note A4, and a quarter note B4. The second measure has a quarter note C5, a quarter note B4, and a quarter note A4.

can't stop the feel ing's too strong

Strings

Musical staff for Strings in treble clef. It contains two measures of music. The first measure has a whole note chord (G4, A4, B4, C5). The second measure has a whole note chord (G4, A4, B4, C5).

>>PIANO

Musical staff for >>PIANO in treble clef. It contains two measures of music. The first measure has a quarter note G4, a quarter note A4, and a quarter note B4. The second measure has a quarter note C5, a quarter note B4, and a quarter note A4.

44

>>MELODY

Snare

>>DRUMS

HH

Toms

Crash Cym

Overdrive Gtr.

Acou Bass Bkp

>>BASS

text

We've got the will to hang on

Strings

>>PIANO

46

>>MELODY

Snare

>>DRUMS

HH

Crash Cym

Overdrive Gtr.

Acou Bass Bkp

>>BASS

text

Can't stop we struggle and fight to survive

Strings

>>PIANO

48

>>MELODY

>>DRUMS

HH

Toms

Crash Cym

Overdrive Gtr.

Acou Bass Bkp

>>BASS

text

just Keep ing The Love A live

Strings

>>PIANO

2'15.1"
50.1,00
Bridge

50

>>MELODY

Snare

>>DRUMS

HH

Crash Cym

Overdrive Gtr.

Acou Bass Bkp

>>BASS

Strings

>>PIANO

52

>>MELODY

Musical staff for MELODY, starting with a treble clef and a key signature of one sharp (F#). The melody begins with a whole rest, followed by a quarter note G4, an eighth note A4, and a quarter note B4. The second measure contains a quarter note C5, a quarter note B4, a quarter note A4, and a quarter note G4.

Snare

Musical staff for Snare, starting with a snare drum clef. It features a pattern of quarter notes: G4, A4, B4, C5, B4, A4, G4.

>>DRUMS

Musical staff for DRUMS, starting with a snare drum clef. It features a pattern of quarter notes: G4, A4, B4, C5, B4, A4, G4.

HH

Musical staff for HH (Hi-Hat), starting with a snare drum clef. It features a continuous eighth-note pattern marked with 'x' symbols.

Toms

Musical staff for Toms, starting with a snare drum clef. It features a pattern of quarter notes: G4, A4, B4, C5, B4, A4, G4.

Crash Cym

Musical staff for Crash Cym, starting with a snare drum clef. It features a pattern of quarter notes: G4, A4, B4, C5, B4, A4, G4.

Overdrive Gtr.

Musical staff for Overdrive Gtr., starting with a treble clef and a key signature of one sharp (F#). The melody begins with a quarter note G4, followed by a quarter note A4, a quarter note B4, and a quarter note C5. The second measure contains a quarter note B4, a quarter note A4, a quarter note G4, and a quarter note F#4.

Acou Bass Bkp

Musical staff for Acou Bass Bkp, starting with a bass clef and a key signature of one sharp (F#). The melody begins with a quarter note G3, followed by a quarter note A3, a quarter note B3, and a quarter note C4. The second measure contains a quarter note B3, a quarter note A3, a quarter note G3, and a quarter note F#3.

>>BASS

Musical staff for >>BASS, starting with a bass clef and a key signature of one sharp (F#). The melody begins with a quarter note G3, followed by a quarter note A3, a quarter note B3, and a quarter note C4. The second measure contains a quarter note B3, a quarter note A3, a quarter note G3, and a quarter note F#3.

text

Musical staff for text, starting with a treble clef and a key signature of one sharp (F#). The melody begins with a quarter note G4, followed by a quarter note A4, a quarter note B4, and a quarter note C5. The second measure contains a quarter note B4, a quarter note A4, a quarter note G4, and a quarter note F#4.

If we stand the test of time love will

Strings

Musical staff for Strings, starting with a treble clef and a key signature of one sharp (F#). The melody begins with a quarter note G4, followed by a quarter note A4, a quarter note B4, and a quarter note C5. The second measure contains a quarter note B4, a quarter note A4, a quarter note G4, and a quarter note F#4.

>>PIANO

Musical staff for >>PIANO, starting with a treble clef and a key signature of one sharp (F#). The melody begins with a quarter note G4, followed by a quarter note A4, a quarter note B4, and a quarter note C5. The second measure contains a quarter note B4, a quarter note A4, a quarter note G4, and a quarter note F#4.

54

>>MELODY

Snare

>>DRUMS

HH

Toms

Crash Cym

Overdrive Gtr.

Acou Bass Bkp

>>BASS

text

be the last ing kind We can't stop the

Strings

>>PIANO

56

>>MELODY

Snare

>>DRUMS

HH

Crash Cym

Overdrive Gtr.

Acou Bass Bkp

>>BASS

text

feel ing's too strong We've got the

Strings

>>PIANO

Detailed description of the musical score: The score is for page 27, starting at measure 56. It features ten staves. The Melody staff (treble clef) begins with a quarter note G4, followed by quarter notes A4, Bb4, and C5, then a dotted quarter note Bb4 and an eighth rest. The Snare staff (percussion clef) has a quarter rest, followed by quarter notes G4, A4, and Bb4. The Drums staff (percussion clef) has a quarter note G4, quarter notes A4 and Bb4, and a quarter note G4. The HH staff (percussion clef) has a series of eighth notes marked with 'x' over a bar line. The Crash Cym staff (percussion clef) has a quarter rest followed by a crash cymbal symbol. The Overdrive Gtr. staff (treble clef) has a quarter rest, followed by quarter notes G4, A4, and Bb4, then a dotted quarter note G4 and an eighth rest. The Acou Bass Bkp and >>BASS staves (bass clef) have a dotted quarter note G2, eighth notes A2 and Bb2, quarter notes C3 and D3, and a dotted quarter note C3 with an eighth rest. The text staff (treble clef) has eighth notes for 'feel', 'ing's', 'too', 'strong', a quarter rest, eighth notes for 'We've', 'got', and 'the'. The Strings staff (treble clef) has a whole note chord G2-A2-Bb2-C3, followed by a dotted half note chord G2-A2-Bb2-C3. The >>PIANO staff (treble clef) has eighth notes for 'feel', 'ing's', 'too', 'strong', a quarter rest, eighth notes for 'We've', 'got', and 'the'.

58

>>MELODY

Snare

>>DRUMS

HH

Toms

Crash Cym

Overdrive Gtr.

Acou Bass Bkp

>>BASS

text

will to hang on Can't stop we

Strings

>>PIANO

60

>>MELODY

Snare

>>DRUMS

HH

Toms

Crash Cym

Overdrive Gtr.

Acou Bass Bkp

>>BASS

text

strug gle and fight to sur vive just

Strings

>>PIANO

62

>>MELODY

Snare

>>DRUMS

HH

Toms

Crash Cym

Overdrive Gtr.

Acou Bass Bkp

>>BASS

text

Keep ing The Love Alive Can't stop the

Strings

>>PIANO

64

>>MELODY

Snare

>>DRUMS

HH

Crash Cym

Overdrive Gtr.

Acou Bass Bkp

>>BASS

text

feel ing's too strong We've got the

Strings

>>PIANO

66

>>MELODY

Snare

>>DRUMS

HH

Toms

Crash Cym

Overdrive Gtr.

Acou Bass Bkp

>>BASS

text

will to hang on Can't stop we

Strings

>>PIANO

68

>>MELODY

Snare

>>DRUMS

HH

Toms

Crash Cym

Overdrive Gtr.

Acou Bass Bkp

>>BASS

text

strug gle and fight to sur vive just

Strings

>>PIANO

70

>>MELODY

Snare

>>DRUMS

HH

Toms

Crash Cym

Overdrive Gtr.

Acou Bass Bkp

>>BASS

text

Keep ing The Love A live

Strings

>>PIANO

72

>>MELODY

Snare

>>DRUMS

HH

Crash Cym

Overdrive Gtr.

Acou Bass Bkp

>>BASS

Strings

>>PIANO

74

>>MELODY

Snare

>>DRUMS

HH

Toms

Crash Cym

Overdrive Gtr.

Acou Bass Bkp

>>BASS

Strings

>>PIANO

76

>>MELODY

Snare

>>DRUMS

HH

Toms

Crash Cym

Overdrive Gtr.

Acou Bass Bkp

>>BASS

Strings

>>PIANO

78

>>MELODY

>>DRUMS

HH

Toms

Crash Cym

Overdrive Gtr.

Acou Bass Bkp

>>BASS

Strings

>>PIANO

Air_Supply-Keeping_The_Love_Alive

>>MELODY

♩ = 87,000023

5

9

13

17

21

26

29

3

34



38



42



47



52



56



61



66



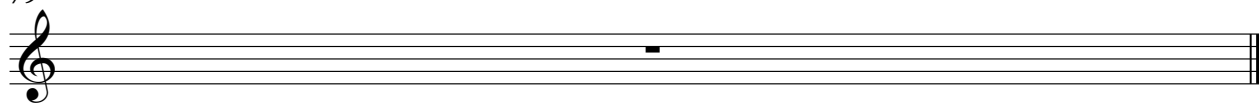
71



75



79



Snare Air_Supply-Keeping_The_Love_Alive

♩ = 87,000023

21

27

46

53

60

68

74

79

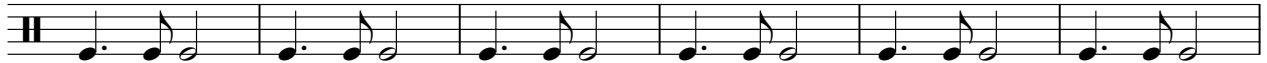
>>DRUMS Air_Supply-Keeping_The_Love_Alive

♩ = 87,000023

5



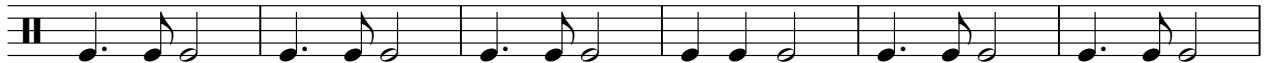
11



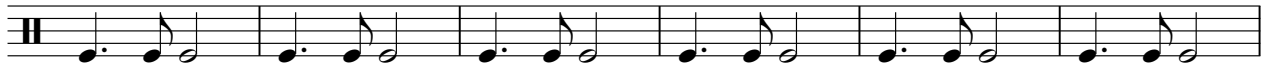
17



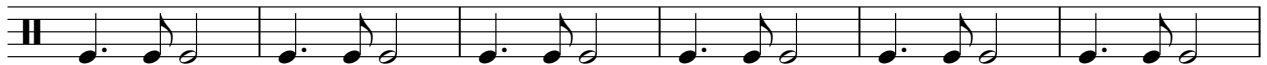
22



28



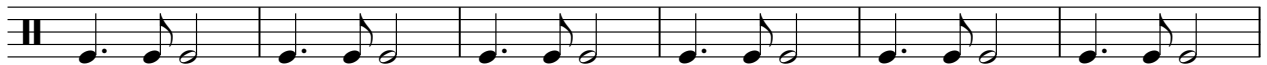
34



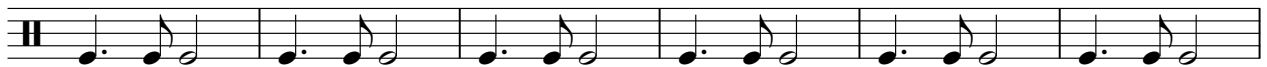
40



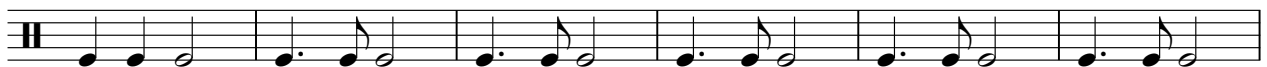
46



52



58

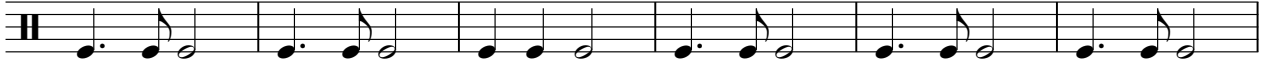


V.S.

2

>>DRUMS

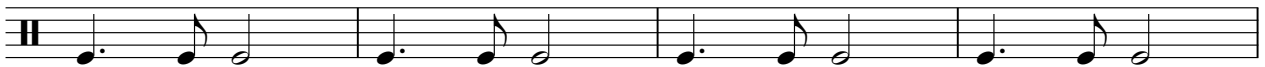
64



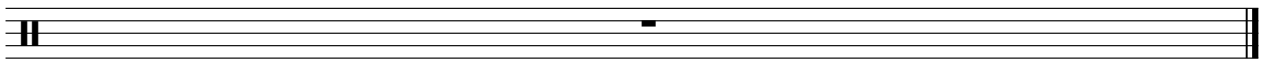
70



75



79



HH

Air_Supply-Keeping_The_Love_Alive

♩ = 87,000023

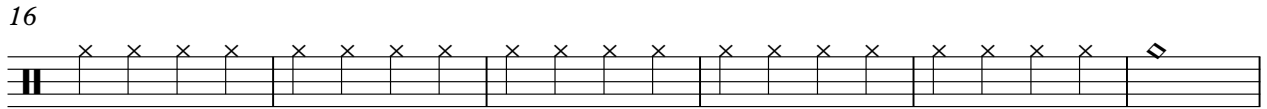
4



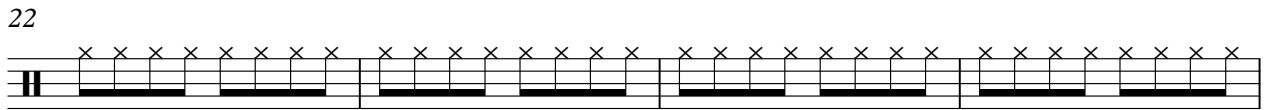
10



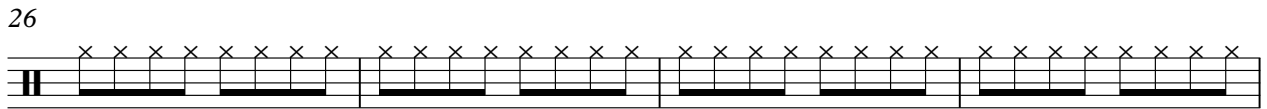
16



22



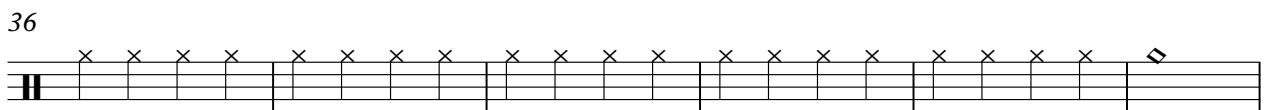
26



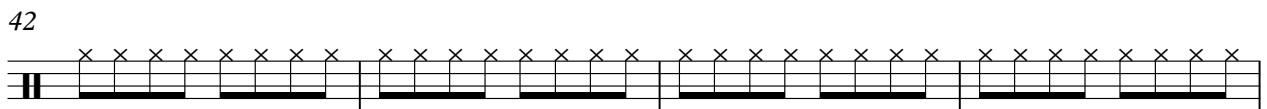
30



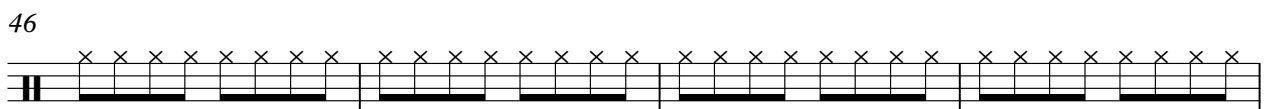
36



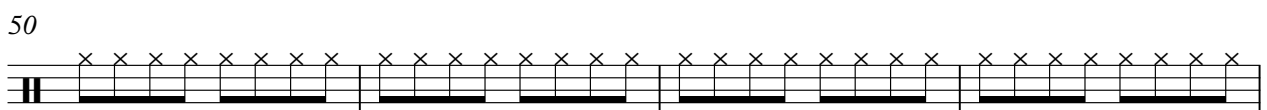
42



46



50



V.S.

2

HH

54



58



62



66



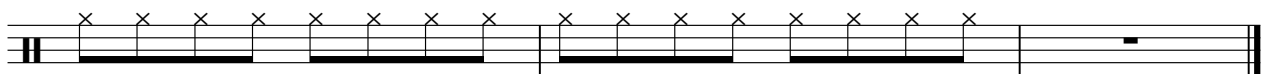
70



74



77



Toms Air_Supply-Keeping_The_Love_Alive

♩ = 87,000023

12 7

22 3 2

29 11 3

45 2

50 2 3

58 2

63 3 2

70 3

75 2

79

Air_Supply-Keeping_The_Love_Alive

Crash Cym

♩ = 87,000023

21

Measures 21-27: Measure 21 has a 4/4 time signature and a thick black bar. Measures 22-27 contain various notes and rests, including a double bar line in measure 26.

28

Measures 28-34: Measure 28 has a double bar line. Measures 29-34 contain notes and rests, with a thick black bar in measure 31 and a double bar line in measure 34.

45

Measures 45-52: Measures 45-52 contain notes and rests, including a double bar line in measure 52.

53

Measures 53-61: Measures 53-61 contain notes and rests, including a double bar line in measure 61.

62

Measures 62-69: Measures 62-69 contain notes and rests, including a double bar line in measure 69.

70

Measures 70-74: Measures 70-74 contain notes and rests, including a double bar line in measure 74.

75

Measures 75-78: Measures 75-78 contain notes and rests, including a double bar line in measure 78.

79

Measure 79: Measure 79 contains a double bar line.

Side Stick Air_Supply-Keeping_The_Love_Alive

♩ = 87,000023

13

18

32

37

79

Air_Supply-Keeping_The_Love_Alive

Overdrive Gtr.

♩ = 87,000023

22

27

33

47

51

55

61

66

71

75

2

77

Overdrive Gtr.

79

Air_Supply-Keeping_The_Love_Alive

Acou Bass Bkp

♩ = 87,000023



V.S.

2

Acou Bass Bkp

55



60



65



70



74



79



>>BASS Air_Supply-Keeping_The_Love_Alive

♩ = 87,000023

5

10

15

20

25

30

35

40

45

50

V.S.

text

Air_Supply-Keeping_The_Love_Alive

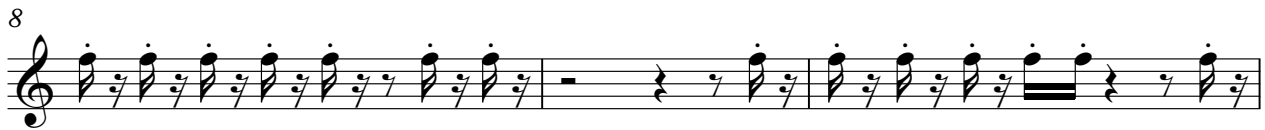
♩ = 87,000023



KEEPING THE LOVE ALIVE AIR SUPPLY Written by R. Supa



Both of us hold ing back so a fraid to



fall in love and lose a gain We've both been hurt be fore saw



love walk out the door in the end Act in' as cold as ice when we



wan na be it's just a fool ish game we play You could n't



hurt me bad e nough to make me give it up and walk a way



We can't stop the feel ing's too strong We've got the



will to hang on Can't stop we strug gle and fight to sur vive V.S.

28

just Keep ing The Love A live

34

Try to for get the past so man y times It's

36

hard to make those mem' ries leave With all we have at stake we'll

39

bend un til we break 'cause we both be lieve We

42

can't stop the feel ing's too strong We've got the

45

will to hang on Can't stop we strug gle and fight to sur vive

48

just Keep ing The Love A live If we

53

stand the test of time love will be the last ing kind We can't stop the


56



feel ing's too strong We've got the will to hang on

Detailed description: This block contains the musical notation for measure 56. It features a treble clef and a series of eighth notes with stems pointing down, creating a rhythmic accompaniment. The lyrics are written below the staff.

59



Can't stop we strug gle and fight to sur vive just

Detailed description: This block contains the musical notation for measure 59. It features a treble clef and a series of eighth notes with stems pointing down. The lyrics are written below the staff.

62



Keep ing The Love Alive Can't stop the feel ing's too strong

Detailed description: This block contains the musical notation for measure 62. It features a treble clef and a series of eighth notes with stems pointing down. The lyrics are written below the staff.


65



We've got the will to hang on Can't stop we

Detailed description: This block contains the musical notation for measure 65. It features a treble clef and a series of eighth notes with stems pointing down. The lyrics are written below the staff.

68



strug gle and fight to sur vive just

Detailed description: This block contains the musical notation for measure 68. It features a treble clef and a series of eighth notes with stems pointing down. The lyrics are written below the staff.

70



Keep ing The Love A live

8

Detailed description: This block contains the musical notation for measure 70. It features a treble clef and a series of eighth notes with stems pointing down. The lyrics are written below the staff. A large number '8' is positioned above the staff, likely indicating a measure rest or a specific musical instruction.

79



Detailed description: This block contains the musical notation for measure 79. It features a treble clef and a series of eighth notes with stems pointing down. The lyrics are written below the staff.

Air_Supply-Keeping_The_Love_Alive

Strings

♩ = 87,000023

6

13

21

28

36

44

51

59

66

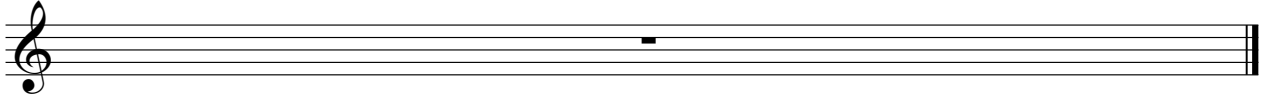
73

V.S.

2

Strings

79



>>PIANO Air_Supply-Keeping_The_Love_Alive

♩ = 87,000023

The image displays a piano arrangement of the song "Keeping The Love Alive" by Air Supply. The score is written in 4/4 time and consists of ten staves of music. The first staff begins with a whole rest, followed by a series of chords and eighth notes. The subsequent staves continue the piece with various rhythmic patterns, including eighth and sixteenth notes, and chords. The notation includes stems, beams, and various note heads. The piece concludes with a final chord and a double bar line. The tempo is indicated as 87,000023.

V.S.

Musical score for guitar, measures 31-58. The score is written in treble clef and consists of ten staves of music. The tempo is marked >>PIANO. The music features a complex rhythmic pattern of eighth and sixteenth notes, often beamed together, and includes various chordal textures and melodic lines. The key signature changes from one flat to two flats between measures 52 and 55.

Measures 31-33: Introduction of eighth-note patterns with chords.

Measures 34-36: Continuation of eighth-note patterns with chords.

Measures 37-39: Continuation of eighth-note patterns with chords.

Measures 40-42: Continuation of eighth-note patterns with chords.

Measures 43-45: Continuation of eighth-note patterns with chords.

Measures 46-48: Continuation of eighth-note patterns with chords.

Measures 49-51: Continuation of eighth-note patterns with chords.

Measures 52-54: Continuation of eighth-note patterns with chords, key signature change to two flats.

Measures 55-57: Continuation of eighth-note patterns with chords, key signature change to one flat.

Measures 58: Continuation of eighth-note patterns with chords, key signature change to two flats.

61



64



67



70



73



76



79

