

# Track 1

♩ = 180,000183

Drumkit

Track 2

Track 1

Track 4

5

Drumkit

Track 2

Track 1

Track 4

9 ♩ = 190,000290

Track 1

Drumkit

# Track 1

♩ = 180,000183

Musical notation for the first system of 'Track 1'. It features a single staff with a 4/4 time signature and a key signature of one flat. The notation includes a whole note chord in the first measure, followed by six measures of eighth notes with 'x' marks above them, and a final measure with a whole note chord. The 'x' marks indicate muted notes.

5

♩ = 190,000290

2 5

Musical notation for the second system of 'Track 1'. It features a single staff with a 4/4 time signature and a key signature of one flat. The notation includes a sequence of eighth notes with 'x' marks, followed by a whole note chord, and two measures of whole notes with '2' and '5' above them. The 'x' marks indicate muted notes.



# Track 1

## Track 1

♩ = 180,000183

Guitar tab for Track 1, measures 1-4. The strings are labeled E, B, G, D, A, E from top to bottom. The fret numbers are: Measure 1: E (1), B (3), G (0), D (1), A (3), E (0); Measure 2: E (3), B (0), G (3), D (1), A (2), E (0); Measure 3: E (0), B (3), G (0), D (0), A (3), E (0); Measure 4: E (0), B (3), G (0), D (3), A (0), E (0).

6

Guitar tab for Track 1, measures 5-8. The strings are labeled T, A, B from top to bottom. The fret numbers are: Measure 5: T (1), A (3), B (0); Measure 6: T (1), A (3), B (0); Measure 7: T (3), A (0), B (3); Measure 8: T (2), A (0), B (3).

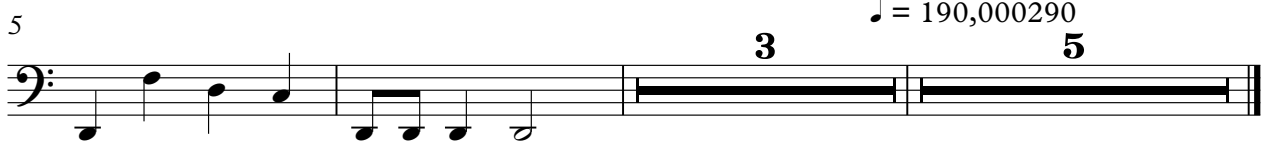
10 ♩ = 190,000290

Guitar tab for Track 1, measures 9-12. The strings are labeled T, A, B from top to bottom. The fret numbers are: Measure 9: T (1), A (0), B (0); Measure 10: T (1), A (3), B (3); Measure 11: T (0), A (0), B (3); Measure 12: T (2), A (0), B (1).

# Track 1

Track 4

♩ = 180,000183



♩ = 190,000290

5

3

5