

♩ = 105,599968

Percussion

Acoustic Bass

♩ = 105,599968

Synth Voice

Solo

Solo



3

Perc.

A. Bass

Solo

5

Perc.

A. Bass

Syn. Voice

Solo

Solo



7

Perc.

A. Bass

Syn. Voice



9

Perc.

A. Bass

Syn. Voice

11

Perc.

A. Bass

Perc. Organ

Syn. Voice



13

Perc.

A. Bass

Perc. Organ

Syn. Voice

15

Perc. A. Bass Perc. Organ Syn. Voice

Detailed description: This system contains measures 15 and 16. The Percussion part features a steady eighth-note pattern with 'x' marks above the notes. The A. Bass part has a simple bass line with quarter and eighth notes. The Perc. Organ part consists of block chords in the right hand. The Syn. Voice part begins with a rest for one measure, followed by a melodic line with eighth and quarter notes.



17

Perc. A. Bass Perc. Organ Syn. Voice

Detailed description: This system contains measures 17 and 18. The Percussion part continues with the same eighth-note pattern. The A. Bass part remains consistent with the previous system. The Perc. Organ part continues with block chords. The Syn. Voice part continues its melodic line, ending with a quarter note and a rest.

19

Perc. $\text{♩} = 21\sharp, 109, 530, 968 \text{ } \text{♩} = 152, 599, 968$

A. Bass

Perc. Organ $\text{♩} = 21\sharp, 109, 530, 968 \text{ } \text{♩} = 152, 599, 968$

Syn. Voice



21

Perc.

A. Bass

Perc. Organ

Solo

23

Perc.

A. Bass

Perc. Organ

Solo

Detailed description: This system covers measures 23 and 24. The Percussion part features a consistent eighth-note pattern. The A. Bass part plays a walking bass line with eighth notes. The Perc. Organ part consists of sustained chords in both the treble and bass staves. The Solo part has a melodic line with eighth and sixteenth notes.



25

Perc.

A. Bass

Syn. Voice

Detailed description: This system covers measures 25 and 26. The Percussion part continues with its eighth-note pattern. The A. Bass part maintains the walking bass line. The Syn. Voice part has a melodic line with eighth and sixteenth notes.



27

Perc.

A. Bass

Syn. Voice

Detailed description: This system covers measures 27 and 28. The Percussion part continues with its eighth-note pattern. The A. Bass part maintains the walking bass line. The Syn. Voice part has a melodic line with eighth and sixteenth notes.

29

Perc.

A. Bass

Syn. Voice



31

Perc.

A. Bass

Perc. Organ

Syn. Voice



33

Perc.

A. Bass

Perc. Organ

Syn. Voice

35

Perc.

A. Bass

Perc. Organ

Syn. Voice

Detailed description: This system contains measures 35 and 36. The Percussion part features a complex rhythmic pattern with many 'x' marks above the notes. The A. Bass part has a simple bass line with a few notes. The Perc. Organ part consists of block chords. The Syn. Voice part has a melodic line with a 7-measure rest at the beginning of measure 35.



37

Perc.

A. Bass

Perc. Organ

Syn. Voice

Detailed description: This system contains measures 37 and 38. The Percussion part continues with its complex rhythmic pattern. The A. Bass part has a simple bass line. The Perc. Organ part consists of block chords. The Syn. Voice part has a melodic line with a 7-measure rest at the beginning of measure 37.

39 $\text{♩} = 211,109,930,968 \neq 102,599,968$

Perc.

A. Bass

Perc. Organ

Syn. Voice

$\text{♩} = 211,109,930,968 \neq 102,599,968$



41 $\text{♩} = 105,599,968$

Perc.

E. Gtr.

A. Bass

Perc. Organ

43

Perc.

E. Gtr.

A. Bass

Perc. Organ



45

Perc.

E. Gtr.

A. Bass

Perc. Organ

47

Perc.

E. Gtr.

A. Bass

Perc. Organ



49

Perc.

E. Gtr.

A. Bass

Perc. Organ

51

Perc.

E. Gtr.

A. Bass

Perc. Organ



53

Perc.

E. Gtr.

A. Bass

Perc. Organ



54

Perc.

E. Gtr.

A. Bass

Perc. Organ

56

Perc.

E. Gtr.

A. Bass

Perc. Organ



58 ♩ = 105,599968 = 105,599968 ♩ = 211,199936

Perc.

E. Gtr.

A. Bass

Perc. Organ

Solo

Solo

61

Perc.

Solo

Solo



65

Perc.

Solo

Solo



68

Perc.

Solo

Solo



70

Perc.

Solo

Solo



73

Perc.

Solo

$\text{♩} = 105,599968$



76

Perc.

Solo

Solo

$\text{♩} = 105,599968$



78

Perc.

A. Bass

Solo

Solo

$\text{♩} = 211,199936$

80

Perc.

A. Bass

Solo

$\text{♩} = 105,599968$

82 $\text{♩} = 105,599968$

Perc.

A. Bass

Perc. Organ

Syn. Voice

Solo

$\text{♩} = 105,599968$



84

Perc.

A. Bass

Perc. Organ

Syn. Voice

87

Perc.

A. Bass

Perc. Organ

Syn. Voice



90

Perc.

A. Bass

Perc. Organ

Syn. Voice



93

Perc.

A. Bass

Solo

95

Perc.

A. Bass

Solo



97

Perc.

A. Bass

Solo



99

Perc.

A. Bass

Solo



100

Perc.

A. Bass

Solo

101

Perc. Organ

Syn. Voice

Solo

A. Bass

Perc.

Detailed description: This block contains the musical notation for measures 101 and 102. It features five staves: Percussion (top), A. Bass (bass clef), Perc. Organ (treble clef), Syn. Voice (treble clef), and Solo (treble clef). The Percussion staff shows a complex rhythmic pattern with many 'x' marks. The A. Bass staff has a simple bass line. The Perc. Organ staff plays chords. The Syn. Voice staff has a melodic line. The Solo staff is empty.



103

Perc. Organ

Syn. Voice

A. Bass

Perc.

Detailed description: This block contains the musical notation for measures 103 and 104. It features five staves: Percussion (top), A. Bass (bass clef), Perc. Organ (treble clef), Syn. Voice (treble clef), and Solo (treble clef). The Percussion staff shows a complex rhythmic pattern with many 'x' marks. The A. Bass staff has a simple bass line. The Perc. Organ staff plays chords. The Syn. Voice staff has a melodic line. The Solo staff is empty.

105

Perc.

A. Bass

Perc. Organ

Syn. Voice

Detailed description: This system contains measures 105 and 106. The Percussion staff (top) features a complex rhythmic pattern with many sixteenth notes and rests, some marked with 'x'. The A. Bass staff (second) has a bass line with dotted notes and eighth notes. The Perc. Organ staff (third) shows chords and some melodic movement. The Syn. Voice staff (bottom) has a vocal line with eighth and sixteenth notes, including a sharp sign (#).



107

Perc.

A. Bass

Perc. Organ

Syn. Voice

Detailed description: This system contains measures 107 and 108. The Percussion staff (top) has a rhythmic pattern with some notes marked with 'x'. The A. Bass staff (second) continues the bass line. The Perc. Organ staff (third) features chords and some melodic lines. The Syn. Voice staff (bottom) has a vocal line with eighth notes and a sharp sign (#).



109

Perc.

A. Bass

Detailed description: This system contains measures 109 and 110. The Percussion staff (top) has a rhythmic pattern with many sixteenth notes. The A. Bass staff (bottom) has a bass line with eighth notes and some rests.

111

Perc.

A. Bass



113

♩ = 105,599968

Perc.

A. Bass

Percussion

♩ = 105,599968

3

5

7

9

11

13

15

17

20 ♩ = 211,199936

V.S.

Percussion

22

24

26

28

30

32

34

36

38

♩ = 214,109,539,681,79,598,468

41

♩ = 105,599,968

Percussion

43

45

47

49

51

53

55

57

$\text{♩} = 105,599968 = 105,599968$

59

$\text{♩} = 211,199936$

65

Musical notation for measure 65, featuring a series of 'x' marks on a staff, indicating a rhythmic pattern.

69

Musical notation for measure 69, featuring a series of 'x' marks on a staff, indicating a rhythmic pattern.

73

Musical notation for measure 73, featuring a series of 'x' marks on a staff, indicating a rhythmic pattern.

77

$\text{♩} = 105,599968$ $\text{♩} = 211,199936$

Musical notation for measure 77, featuring a series of 'x' marks on a staff, indicating a rhythmic pattern.

80

$\text{♩} = 105,599968$

Musical notation for measure 80, featuring a series of 'x' marks on a staff, indicating a rhythmic pattern.

83

$\text{♩} = 105,599968$

Musical notation for measure 83, featuring a series of 'x' marks on a staff, indicating a rhythmic pattern.

87

Musical notation for measure 87, featuring a series of 'x' marks on a staff, indicating a rhythmic pattern.

91

Musical notation for measure 91, featuring a series of 'x' marks on a staff, indicating a rhythmic pattern.

94

Musical notation for measure 94, featuring a series of 'x' marks on a staff, indicating a rhythmic pattern.

96

Musical notation for measure 96, featuring a series of 'x' marks on a staff, indicating a rhythmic pattern.

Percussion

98

100

102

104

106

109

111

113

♩ = 105,599968

Electric Guitar

♩ = 105,599968 ♩ = 211,199936 ♩ = 105,599968

19 20

3

42

45

3 3

47

49

3

52

3 3 6

54

3 3

57

♩ = 105,599968 ♩ = 211,199936 ♩ = 105,599968

18

77

♩ = 105,599968 ♩ = 211,199936 ♩ = 105,599968 ♩ = 105,599968 ♩ = 105,599968

2 2 2 32

The image shows a musical score for electric guitar. It consists of ten staves of music. The first staff has a 4/4 time signature and contains measures 19 and 20. Measures 19 and 20 are marked with a '3', indicating a triplet. The second staff starts at measure 42. The third staff starts at measure 45 and contains two triplets marked with '3'. The fourth staff starts at measure 47. The fifth staff starts at measure 49 and contains a triplet marked with '3'. The sixth staff starts at measure 52 and contains triplets marked with '3' and a sextuplet marked with '6'. The seventh staff starts at measure 54 and contains two triplets marked with '3'. The eighth staff starts at measure 57 and contains a triplet marked with '3'. Above the eighth staff, there are three tempo markings: ♩ = 105,599968, ♩ = 211,199936, and ♩ = 105,599968. The eighth staff ends with a measure marked '18'. The ninth staff starts at measure 77 and contains four measures marked with '2' and one measure marked '32'. Above the ninth staff, there are five tempo markings: ♩ = 105,599968, ♩ = 211,199936, ♩ = 105,599968, ♩ = 105,599968, and ♩ = 105,599968.

Acoustic Bass

♩ = 105,599968



V.S.

42



46



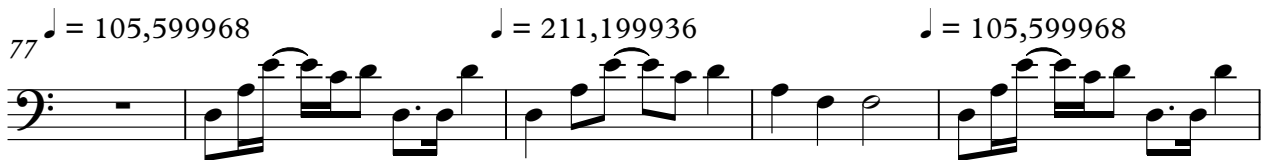
51



55



77



82



87



92



94



96



Acoustic Bass

98

Musical notation for measures 98 and 99. Measure 98 contains a series of eighth notes with slurs, starting on a G4 and moving up stepwise to a G5. Measure 99 continues with eighth notes, including a sharp sign (F#) on the second staff line.

100

Musical notation for measures 100 through 103. Measure 100 features a descending eighth-note scale with slurs. Measures 101-103 consist of quarter notes and half notes, including a sharp sign (F#) on the second staff line.

104

Musical notation for measures 104 through 108. Measure 104 starts with a quarter note and a half note. Measures 105-108 continue with quarter notes and half notes, including a sharp sign (F#) on the second staff line.

109

Musical notation for measures 109 through 111. Measures 109-111 feature eighth-note patterns with slurs, including a sharp sign (F#) on the second staff line.

112

Musical notation for measures 112 through 115. Measures 112-113 feature eighth-note patterns with slurs. Measures 114 and 115 are whole rests. A tempo marking $\text{♩} = 105,599968$ is located above measure 112.

Percussive Organ

♩ = 105,599968

11

16

22

34

39

46

V.S.

Percussive Organ

53 $\text{♩} = 105,599968$

59 $\text{♩} = 211,199936$ $\text{♩} = 105,599968$ $\text{♩} = 211,199936$ $\text{♩} = 105,599968$ $\text{♩} = 105,599968$

18 2 2 2

85

91 8

103

107 $\text{♩} = 105,599968$

6

Synth Voice

♩ = 105,599968

4

8

12

16

20 ~~♩ = 105,599968~~ 4

27

31

35

38 ~~♩ = 105,599968~~ ♩ = 105,599968 17

58 ~~♩ = 105,599968~~ ♩ = 211,199936 18 ♩ = 105,599968 ♩ = 211,199936 ♩ = 105,599968 2 2 2

2

Synth Voice

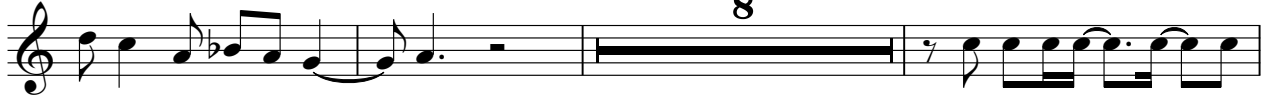
83 ♩ = 105,599968



87



91

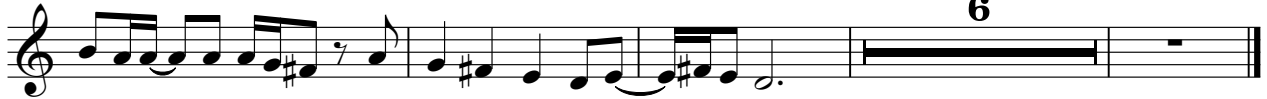


8

102



106



♩ = 105,599968

6

Solo

♩ = 105,599968

6 **14** ♩ = 211,199936

23 **15** ♩ = 211,199936

41 ♩ = 105,599968 **17** ♩ = 105,599968 ♩ = 211,199936

63

69

75 ♩ = 105,599968

78 ♩ = 211,199936

81 ♩ = 105,599968 ♩ = 105,599968 **10**

Detailed description: This is a guitar solo score in 4/4 time. It consists of ten staves of music. The first staff starts with a tempo marking of ♩ = 105,599968. The second staff begins at measure 6 and contains a whole rest for 14 measures, followed by eighth-note patterns. The third staff starts at measure 23 and contains a whole rest for 15 measures, followed by eighth-note patterns. The fourth staff begins at measure 41 with a tempo change to ♩ = 105,599968, followed by a whole rest for 17 measures and then complex chordal and melodic passages. The fifth staff starts at measure 63. The sixth staff starts at measure 69. The seventh staff starts at measure 75 with a tempo change to ♩ = 105,599968. The eighth staff starts at measure 78 with a tempo change to ♩ = 211,199936. The ninth staff starts at measure 81 with a tempo change to ♩ = 105,599968 and ends with a whole rest for 10 measures. The score includes various musical notations such as chords, rests, and rhythmic patterns.

2

Solo

93



95



98



100



14

♩ = 105,599968

Solo

♩ = 105,599968 ♩ = 211,199936 ♩ = 211,199936 ♩ = 105,599968

4 **15** **20**

41 ♩ = 105,599968 ♩ = 105,599968 ♩ = 211,199936

17

63

2

71

4 ♩ = 105,599968

78 ♩ = 211,199936 ♩ = 105,599968 ♩ = 105,599968 ♩ = 105,599968

2 **2** **32**