

V - La Bamba

♩ = 150,000000

Harmonica

Snare 2

Claves

♩ = 150,000000

Rhythm Chords

Rhythm Bass Lines

Muted Lead

Bass



7

Snare 2

Shaker

Claves

Bass

Copyright © 196? by

9

Snare 1

Snare 2

Shaker

Claves

Rhythm Chords

Bass



12

Snare 2

Shaker

Claves

Rhythm Chords

Bass

Lead

15

Snare 2

Shaker

Claves

Rhythm Chords

Bass

Lead



18

Snare 2

Shaker

Claves

Rhythm Chords

Bass

Lead

21

Snare 1

Snare 2

Shaker

Claves

Rhythm Chords

Rhythm Bass Lines

Bass

Lead

3



23

Snare 2

Shaker

Claves

Rhythm Bass Lines

Bass

Lead

3

25

Snare 2

Shaker

Claves

Rhythm Bass Lines

Bass

Lead

Detailed description: This musical score covers measures 25, 26, and 27. The Snare 2 part features a consistent pattern of quarter notes with a slight delay. The Shaker part consists of a steady eighth-note accompaniment. The Claves part has a sparse pattern of quarter notes. The Rhythm Bass Lines part is written in treble clef with a series of eighth notes. The Bass part is in bass clef with a similar eighth-note pattern. The Lead part is in treble clef and follows a melodic line of eighth notes.



28

Snare 2

Shaker

Rhythm Bass Lines

Bass

Lead

Detailed description: This musical score covers measures 28, 29, and 30. The Snare 2 part continues with the same quarter-note pattern. The Shaker part remains a steady eighth-note accompaniment. The Rhythm Bass Lines part has a more varied eighth-note pattern, including some rests. The Bass part continues with its eighth-note accompaniment. The Lead part features a melodic line with some rests and a fermata over the final note of the first measure.

31

Snare 2

Shaker

Rhythm Bass Lines

Bass

Lead



34

Harmonica

Snare 2

Shaker

Bass

Lead

37

Harmonica

Snare 2

Shaker

Claves

Bass

Lead



40

Harmonica

Snare 2

Shaker

Claves

Bass

Lead

43

Harmonica

Snare 1

Snare 2

Shaker

Claves

Bass

Lead



00:01:18:03
48.1,00
V2

46

Snare 2

Shaker

Claves

Rhythm Chords

Bass

Lead

49

Snare 2

Shaker

Rhythm Chords

Bass

Lead

D A D E



51

Snare 2

Shaker

Rhythm Chords

Rhythm Bass Lines

Bass

Lead

53

Snare 2

Shaker

Rhythm Bass Lines

Bass

Lead



55

Snare 2

Shaker

Rhythm Bass Lines

Bass

Lead

58

Snare 2

Shaker

Rhythm Bass Lines

Bass

Lead



61

Snare 2

Shaker

Rhythm Bass Lines

Bass

Lead

64

Harmonica

Snare 2

Shaker

Rhythm Bass Lines

Muted Lead

Bass

Lead

Detailed description: This musical score covers measures 64, 65, and 66. The key signature is three sharps (F#, C#, G#). The Harmonica part starts with a whole rest in measure 64, followed by a half note G#4 in measure 65, and a half note A4 in measure 66. The Snare 2 part has a consistent pattern of a quarter rest followed by a quarter note G#4. The Shaker part consists of a steady eighth-note pattern. The Rhythm Bass Lines part features a complex eighth-note pattern. The Muted Lead part has a whole rest in measure 64, followed by a half note G#4 in measure 65, and a half note A4 in measure 66. The Bass part has a consistent eighth-note pattern. The Lead part has a half note G#4 in measure 64, followed by a half note A4 in measure 65, and a whole rest in measure 66.



67

Harmonica

Snare 2

Shaker

Rhythm Bass Lines

Muted Lead

Bass

Detailed description: This musical score covers measures 67, 68, and 69. The key signature is three sharps (F#, C#, G#). The Harmonica part starts with a half note G#4 in measure 67, followed by a half note A4 in measure 68, and a half note B4 in measure 69. The Snare 2 part has a consistent pattern of a quarter rest followed by a quarter note G#4. The Shaker part consists of a steady eighth-note pattern. The Rhythm Bass Lines part features a complex eighth-note pattern. The Muted Lead part has a half note G#4 in measure 67, followed by a half note A4 in measure 68, and a half note B4 in measure 69. The Bass part has a consistent eighth-note pattern. The Lead part has a half note G#4 in measure 67, followed by a half note A4 in measure 68, and a half note B4 in measure 69.

70

Harmonica

Snare 2

Shaker

Rhythm Bass Lines

Muted Lead

Bass



73

Harmonica

Snare 1

Snare 2

Shaker

Claves

Rhythm Bass Lines

Bass

76

Snare 2

Shaker

Claves

Rhythm Chords

Bass

Lead



79

Snare 2

Shaker

Claves

Rhythm Chords

Bass

Lead



82

Harmonica

Snare 2

Shaker

Claves

Rhythm Chords

Bass

Lead

85

Harmonica

Snare 2

Shaker

Claves

Rhythm Chords

Bass

Lead



88

Harmonica

Snare 2

Shaker

Claves

Rhythm Chords

Bass

Lead

91

Harmonica

Snare 2

Shaker

Claves

Rhythm Chords

Bass

Lead

Harmonica

V - La Bamba

♩ = 150,000000

35

40

46

20

70

2

76

6

87

91

Copyright © 1967 by

Snare 1

V - La Bamba

♩ = 150,000000

8 11

21

23

46

29

76

19

Copyright © 196? by

Snare 2

V - La Bamba

♩ = 150,000000

5



10



16



22



28



34



40



Copyright © 1967 by

44



50



56



62



68



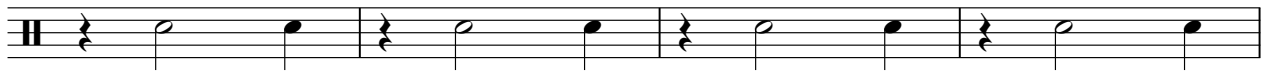
75



81



87



91



Shaker

V - La Bamba

$\text{♩} = 150,000,000$

6

9

13

17

21

25

29

33

37

41

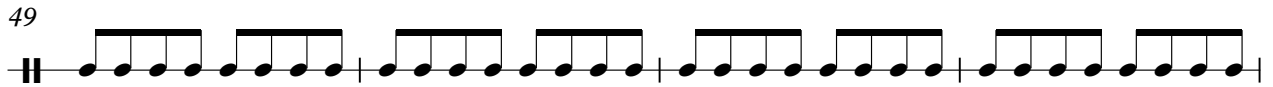
Shaker

45



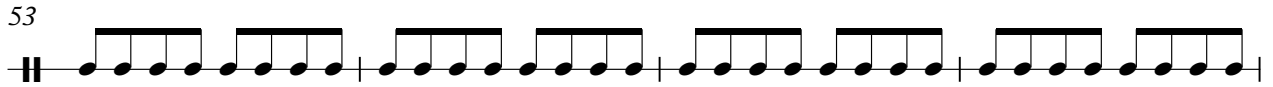
A musical staff with a double bar line at the beginning. It contains eight groups of four eighth notes, each group beamed together. The notes are on a single line, and the groups are separated by vertical bar lines.

49



A musical staff with a double bar line at the beginning. It contains eight groups of four eighth notes, each group beamed together. The notes are on a single line, and the groups are separated by vertical bar lines.

53



A musical staff with a double bar line at the beginning. It contains eight groups of four eighth notes, each group beamed together. The notes are on a single line, and the groups are separated by vertical bar lines.

57



A musical staff with a double bar line at the beginning. It contains eight groups of four eighth notes, each group beamed together. The notes are on a single line, and the groups are separated by vertical bar lines.

61



A musical staff with a double bar line at the beginning. It contains eight groups of four eighth notes, each group beamed together. The notes are on a single line, and the groups are separated by vertical bar lines.

65



A musical staff with a double bar line at the beginning. It contains eight groups of four eighth notes, each group beamed together. The notes are on a single line, and the groups are separated by vertical bar lines.

69



A musical staff with a double bar line at the beginning. It contains eight groups of four eighth notes, each group beamed together. The notes are on a single line, and the groups are separated by vertical bar lines.

73



A musical staff with a double bar line at the beginning. It contains six groups of four eighth notes, each group beamed together. The notes are on a single line, and the groups are separated by vertical bar lines.

76



A musical staff with a double bar line at the beginning. It contains eight groups of four eighth notes, each group beamed together. The notes are on a single line, and the groups are separated by vertical bar lines.

80



A musical staff with a double bar line at the beginning. It contains eight groups of four eighth notes, each group beamed together. The notes are on a single line, and the groups are separated by vertical bar lines.

Shaker

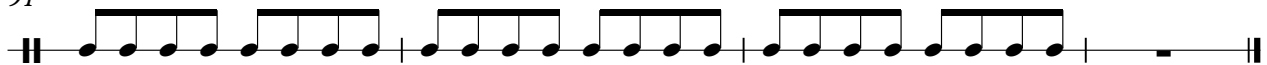
84



88



91



Claves

V - La Bamba

♩ = 150,000000

7

12

18

24

11

39

45

25

74

80

86

90

Detailed description: The image shows a musical score for Claves in 4/4 time. The tempo is marked as ♩ = 150,000000. The score consists of ten staves of music. The first staff begins with a 4/4 time signature and a rest of 7 measures, indicated by a thick black bar and the number '7'. The subsequent staves contain eighth notes. The second staff is labeled '12' at the beginning. The third staff is labeled '18' at the beginning. The fourth staff is labeled '24' at the beginning and contains a rest of 11 measures, indicated by a thick black bar and the number '11'. The fifth staff is labeled '39' at the beginning. The sixth staff is labeled '45' at the beginning and contains a rest of 25 measures, indicated by a thick black bar and the number '25'. The seventh staff is labeled '74' at the beginning. The eighth staff is labeled '80' at the beginning. The ninth staff is labeled '86' at the beginning. The tenth staff is labeled '90' at the beginning and ends with a double bar line.

Copyright © 196? by

Rhythm Chords V - La Bamba

♩ = 150,000000

3 6

12 C F G F C F G F

16 C F G F C F G F

20 C F G F C F G F 24

46

50 A D E D A D E D 24

76 A D E

80 C F G F C F G F

84 C F G F C F G F

88 C F G F C F G F

Copyright © 1967 by V.S.

Rhythm Chords

91

F C F G F

Rhythm Bass Lines

V - La Bamba

♩ = 150,000000

21

25

30

34 12 6

54

58

63

68

72 2

76 19

Copyright © 1967 by

Muted Lead

V - La Bamba

♩ = 150,000000

45 20

67

70

3

76

19

Copyright © 196? by

45



49



53



57



61



65



69



73



76



80



84



88



91



V - La Bamba

Lead

♩ = 150,000000

12

16

20

23

26

30

35

41

46

2

Copyright © 1967 by

47

51

53

56

61

66

10

80

84

88

91