

# The One That Got Away

Katy Perry

Teenage Dream

Words by Katy Perry

Music by Max Martin, Lukasz Gottwald & Katy Perry

**Moderate** ♩ = 132

**Intro**  
*let ring throughout*

**Verse**

**A-Piano**

1

4

7

10

13

16

19

22

25

28

31

**Chorus**

Verse

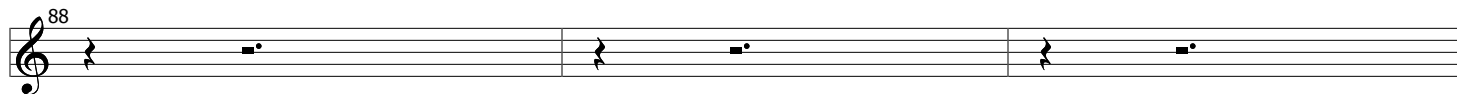
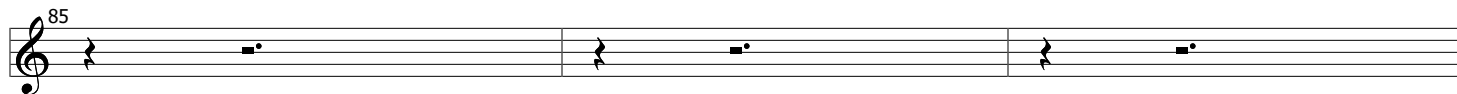
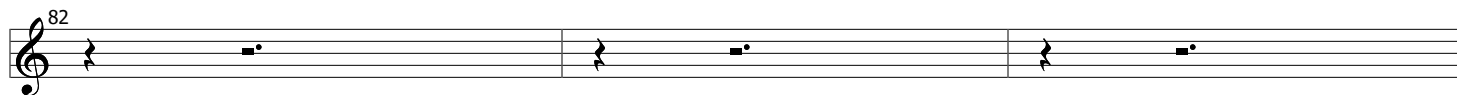
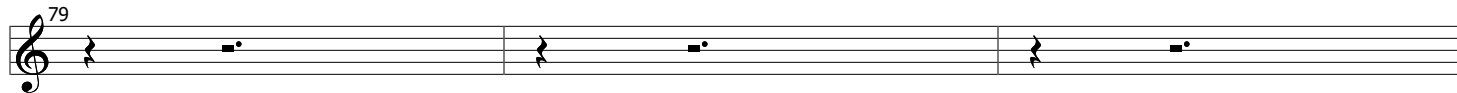
Musical notation for the Verse section, measures 34-49. The notation is on a single treble clef staff. Measure 34 starts with a treble clef, a key signature of one sharp (F#), and a 3/4 time signature. The melody consists of quarter notes: F#4, G4, A4, B4. Measure 35 contains a whole rest. Measure 36 contains a quarter rest. Measure 37 starts with a treble clef and a key signature of one sharp (F#). The melody consists of quarter notes: B4, C#5, D5, E5. Measure 38: D5, C#5, B4. Measure 39: A4, G4, F#4. Measure 40: E5, D5, C#5. Measure 41: B4, A4, G4. Measure 42: F#4, E5, D5. Measure 43: C#5, B4, A4. Measure 44: G4, F#4, E5. Measure 45: D5, C#5, B4. Measure 46: A4, G4, F#4. Measure 47: E5, D5, C#5. Measure 48: B4, A4, G4. Measure 49: F#4, E5, D5. The section ends with a double bar line.

Chorus

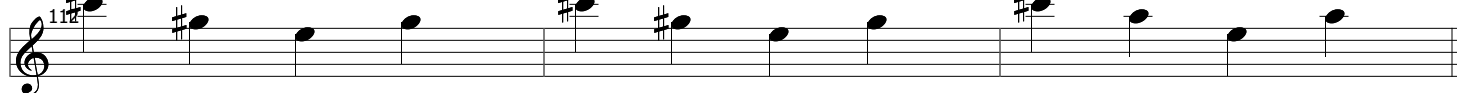
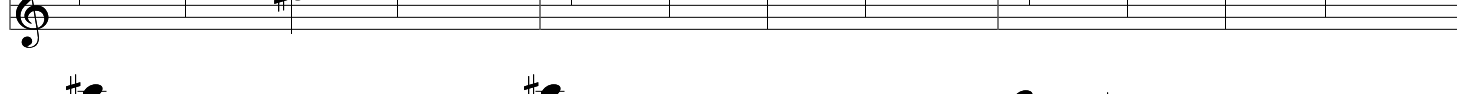
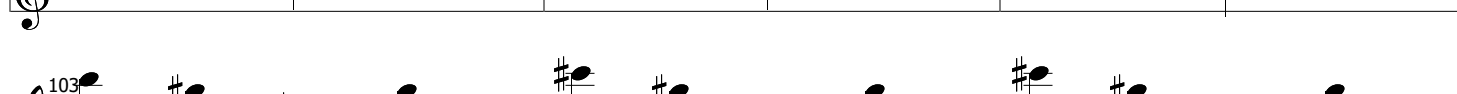
Musical notation for the Chorus section, measures 52-70. The notation is on a single treble clef staff. Measure 52 starts with a treble clef and a key signature of one sharp (F#). The melody consists of quarter notes: B4, C#5, D5, E5. Measure 53: D5, C#5, B4. Measure 54: A4, G4, F#4. Measure 55: E5, D5, C#5. Measure 56: B4, A4, G4. Measure 57: F#4, E5, D5. Measure 58: C#5, B4, A4. Measure 59: G4, F#4, E5. Measure 60: D5, C#5, B4. Measure 61: A4, G4, F#4. Measure 62: E5, D5, C#5. Measure 63: B4, A4, G4. Measure 64: F#4, E5, D5. Measure 65: C#5, B4, A4. Measure 66: G4, F#4, E5. Measure 67: D5, C#5, B4. Measure 68: A4, G4, F#4. Measure 69: E5, D5, C#5. Measure 70: B4, A4, G4. The section ends with a double bar line. A dynamic marking *f* is placed below the first measure of the chorus.



**Bridge**



**Chorus**



Outro

