

Meatloaf - You Took The Word Right Out Of My Mouth

0.0"
1.1,00
Copyright © 1996 Steve Day - sad001@ccnet.com

♩ = 126,000130

Arranged by

Steve Day

sad001@ccnet.com

Steel String

Jazz Electric

Distortion

Fretless Bass

Tango Accord

Synth Charang

String Ensemb1

Acoustic Grand

♩ = 126,000130

5

Meatloaf

Arranged by

Steve Day

sad001@ccnet.com

Steel String

Jazz Electric

Distortion

Fretless Bass

Tango Accord

Synth Charang

Acoustic Grand

Detailed description: This block contains the musical score for measures 5 through 8. It features ten staves. The top four staves are for percussion: Meatloaf (drum), Arranged by (drum), Steve Day (drum), and sad001@ccnet.com (drum). The bottom six staves are for stringed instruments: Steel String (guitar), Jazz Electric (guitar), Distortion (guitar), Fretless Bass (bass), Tango Accord (guitar), and Acoustic Grand (guitar). The music is in a key with three sharps (F#, C#, G#) and a 4/4 time signature. Measure 5 starts with a double bar line and a key signature change. The drum parts are simple, with the bottom staff showing a triplet in measure 8. The stringed instruments play various chords and melodic lines.



9

Meatloaf

Arranged by

Steve Day

sad001@ccnet.com

Steel String

Jazz Electric

Distortion

Fretless Bass

Tango Accord

Acoustic Grand

Detailed description: This block contains the musical score for measures 9 through 12. It features the same ten staves as the previous block. The music continues in the same key and time signature. Measure 9 starts with a double bar line and a key signature change. The drum parts are consistent with the previous block. The stringed instruments play various chords and melodic lines, including a long note in the Distortion staff in measure 10.

13

Arranged by

Steve Day

sad001@ccnet.com

Steel String

Jazz Electric

Distortion

Fretless Bass

Tango Accord

Acoustic Grand



17

Meatloaf

Arranged by

Steve Day

sad001@ccnet.com

AWE32 GS

Steel String

Jazz Electric

Distortion

Fretless Bass

Tango Accord

Synth Charang

Acoustic Grand

21

Arranged by

Steve Day

sad001@ccnet.com

Steel String

Jazz Electric

Distortion

Fretless Bass

Tango Accord

Synth Charang

Acoustic Grand

25

Meatloaf

Arranged by

Steve Day

sad001@ccnet.com

AWE32 GS

Steel String

Jazz Electric

Distortion

Fretless Bass

Tango Accord

Synth Charang

String Ensembl

Acoustic Grand

28

Meatloaf

Arranged by

Steve Day

sad001@ccnet.com

AWE32 GS

Steel String

Distortion

Fretless Bass

Tango Accord

Synth Charang

String Ensembl

Acoustic Grand



32

Arranged by

Steve Day

sad001@ccnet.com

Steel String

Fretless Bass

Tango Accord

Synth Charang

Acoustic Grand

36

Arranged by
Steve Day
sad001@ccnet.com

Steel String
Fretless Bass
Tango Accord
Synth Charang
String Ensemb1
Acoustic Grand



41

Arranged by
Steve Day
sad001@ccnet.com

AWE32 GS
Steel String
Fretless Bass
Tango Accord
Acoustic Grand

45

Meatloaf

Arranged by

Steve Day

sad001@ccnet.com

Steel String

Distortion

Fretless Bass

Tango Accord

Acoustic Grand

Detailed description: This block contains the musical score for measures 45 through 48. It features ten staves. The top four staves are for drums: Meatloaf (top), Arranged by, Steve Day, and sad001@ccnet.com. The bottom six staves are for instruments: Steel String, Distortion, Fretless Bass, Tango Accord, Acoustic Grand, and another Acoustic Grand. The music is in a key with three sharps (F#, C#, G#) and a 4/4 time signature. The drum parts show a consistent pattern of snare and bass drum hits. The guitar parts (Steel String, Distortion, Acoustic Grand) feature complex chordal textures and melodic lines. The bass part (Fretless Bass) provides a steady rhythmic accompaniment. The Tango Accord part has a melodic line with some grace notes. The bottom Acoustic Grand part has a similar melodic line to the Tango Accord.



49

Arranged by

Steve Day

sad001@ccnet.com

Steel String

Distortion

Fretless Bass

Tango Accord

Synth Charang

String Ensemb1

Acoustic Grand

Detailed description: This block contains the musical score for measures 49 through 52. It features ten staves. The top four staves are for drums: Arranged by, Steve Day, sad001@ccnet.com, and another drum part. The bottom six staves are for instruments: Steel String, Distortion, Fretless Bass, Tango Accord, Synth Charang, and String Ensemb1. The music is in the same key and time signature as the previous block. The drum parts continue with the established pattern. The guitar parts (Steel String, Distortion, Acoustic Grand) feature complex chordal textures and melodic lines. The bass part (Fretless Bass) provides a steady rhythmic accompaniment. The Tango Accord part has a melodic line with some grace notes. The Synth Charang part has a melodic line with some grace notes. The String Ensemb1 part has a melodic line with some grace notes.

You Took The Words Right Out of My Mouth

Meatloaf

Arranged by

Steve Day

sad001@ccnet.com

AWE32 GS

Tom-t.

Steel String

Distortion

Fretless Bass

Tango Accord

Synth Charang

String Ensembl

Acoustic Grand

57

Arranged by

Steve Day

sad001@ccnet.com

Steel String

Distortion

Fretless Bass

Tango Accord

Synth Charang

Acoustic Grand



61

Arranged by

Steve Day

sad001@ccnet.com

Steel String

Jazz Electric

Fretless Bass

Tango Accord

Synth Charang

Acoustic Grand

65

Meatloaf

Arranged by

Steve Day

sad001@ccnet.com

Steel String

Jazz Electric

Distortion

Fretless Bass

Tango Accord

Synth Charang

String Ensembl

Acoustic Grand

69

Meatloaf

Arranged by

Steve Day

sad001@ccnet.com

AWE32 GS

Tom-t.

Steel String

Distortion

Fretless Bass

Tango Accord

String Ensembl

Acoustic Grand

73

Meatloaf

Arranged by

Steve Day

sad001@ccnet.com

Steel String

Jazz Electric

Distortion

Fretless Bass

Tango Accord

String Ensemb1

Acoustic Grand

Detailed description: This block contains the musical score for measures 73 through 76. It features ten staves: Meatloaf (drums), Arranged by (drums), Steve Day (drums), sad001@ccnet.com (drums), Steel String (guitar), Jazz Electric (guitar), Distortion (guitar), Fretless Bass (bass), Tango Accord (piano), and String Ensemb1 (strings). The music is in a key with three sharps (F#, C#, G#) and a 4/4 time signature. The arrangement includes various guitar textures, a bass line, piano accompaniment, and string ensemble parts.



77

Arranged by

Steve Day

sad001@ccnet.com

Steel String

Jazz Electric

Distortion

Fretless Bass

Tango Accord

String Ensemb1

Acoustic Grand

Detailed description: This block contains the musical score for measures 77 through 80. It features the same ten staves as the previous block. The music continues in the same key and time signature. The arrangement includes various guitar textures, a bass line, piano accompaniment, and string ensemble parts.

81

Meatloaf

Arranged by

Steve Day

sad001@ccnet.com

Steel String

Distortion

Fretless Bass

Tango Accord

String Ensembl

Acoustic Grand



85

Meatloaf

Arranged by

Steve Day

sad001@ccnet.com

AWE32 GS

Steel String

Fretless Bass

Tango Accord

Acoustic Grand

89

Arranged by
Steve Day
sad001@ccnet.com

Steel String
Distortion
Fretless Bass
Tango Accord
Synth Charang
Acoustic Grand



93

Arranged by
Steve Day
sad001@ccnet.com

Steel String
Distortion
Fretless Bass
Tango Accord
Synth Charang
String Ensemb1
Acoustic Grand

97

Meatloaf
Arranged by
Steve Day
sad001@ccnet.com
Steel String
Distortion
Fretless Bass
Tango Accord
Synth Charang
String Ensembl
Acoustic Grand



101

Arranged by
Steve Day
sad001@ccnet.com
Steel String
Distortion
Fretless Bass
Tango Accord
Synth Charang
Acoustic Grand

105

Arranged by

Steve Day

sad001@ccnet.com

Distortion

Fretless Bass

Tango Accord

Synth Charang



109

Meatloaf

Arranged by

Steve Day

sad001@ccnet.com

Fretless Bass

Tango Accord

Synth Charang

String Ensemb1

113

Meatloaf

Arranged by

Steve Day

sad001@ccnet.com

Steel String

Fretless Bass

Tango Accord

Synth Charang

String Ensemb1

Acoustic Grand

117

Arranged by

Fretless Bass

Tango Accord

Synth Charang

String Ensemb1

121

Arranged by

Fretless Bass

Tango Accord

Synth Charang

String Ensemb1



125

Arranged by

Fretless Bass

Tango Accord

Synth Charang

String Ensemb1



129

Arranged by

Fretless Bass

Tango Accord

Synth Charang

String Ensemb1

Meatloaf - You Took The Word Right Out Of My Mouth
You Took The Words Right Out of My Mouth

♩ = 126,000130

53 **79**

The image shows a musical staff in 4/4 time. Above the staff, a tempo marking indicates a quarter note equals 126,000130. The staff is divided into three measures. The first measure contains a whole rest, with the number '53' written above it. The second measure contains a whole rest, a quarter rest, an eighth rest, and a quarter note, with the number '79' written above it. The third measure contains a whole rest. The staff ends with a double bar line.

Meatloaf

Meatloaf - You Took The Word Right Out Of My Mouth

♩ = 126,000130

4 3 9

Detailed description: This is the first musical staff. It starts with a treble clef and a 4/4 time signature. Above the staff, there are three fret numbers: '4', '3', and '9'. Each number is positioned above a horizontal bar that spans across one or more frets on the staff. Above each fret number, there is a circled 'X' symbol with two horizontal lines underneath it, likely representing a specific guitar technique or a capo position. The staff is divided into measures by vertical bar lines.

20

7 15

Detailed description: This is the second musical staff. It begins with the number '20' on the left. The staff contains two horizontal bars representing frets. The first bar is labeled '7' and the second bar is labeled '15'. Above each bar, there is a circled 'X' symbol with two horizontal lines underneath it. The staff is divided into measures by vertical bar lines.

46

9 9 3

Detailed description: This is the third musical staff. It begins with the number '46'. The staff contains three horizontal bars representing frets. The first bar is labeled '9', the second bar is labeled '9', and the third bar is labeled '3'. Above each bar, there is a circled 'X' symbol with two horizontal lines underneath it. The staff is divided into measures by vertical bar lines.

71

9 3

Detailed description: This is the fourth musical staff. It begins with the number '71'. The staff contains two horizontal bars representing frets. The first bar is labeled '9' and the second bar is labeled '3'. Above each bar, there is a circled 'X' symbol with two horizontal lines underneath it. The staff is divided into measures by vertical bar lines.

88

9 13

Detailed description: This is the fifth musical staff. It begins with the number '88'. The staff contains two horizontal bars representing frets. The first bar is labeled '9' and the second bar is labeled '13'. Above each bar, there is a circled 'X' symbol with two horizontal lines underneath it. The staff is divided into measures by vertical bar lines.

111

20

Detailed description: This is the sixth musical staff. It begins with the number '111'. The staff contains one long horizontal bar representing a fret, labeled '20'. Above this bar, there is a circled 'X' symbol with two horizontal lines underneath it. The staff is divided into measures by vertical bar lines.

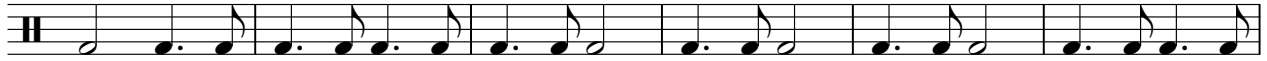
Arranged by

Meatloaf - You Took The Word Right Out Of My Mouth

♩ = 126,000130



6



12



18



24



29



35



41



46



51

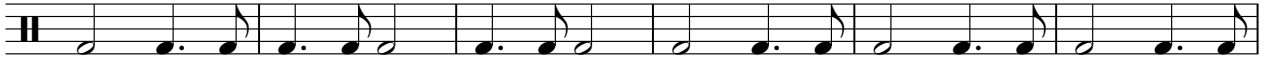


V.S.

2

Arranged by

56



62



67



72



77



82



87



93



99



105



111



116



121



126



130



♩ = 126,000130



7



13



19



25



30



35



2

41



47



53



59



65



71



77



83



89



95



101



107

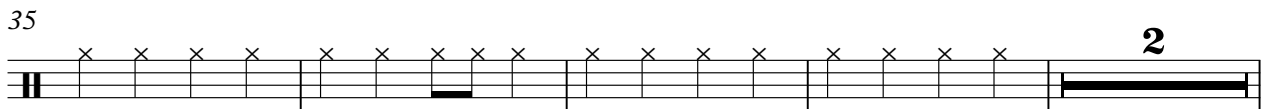
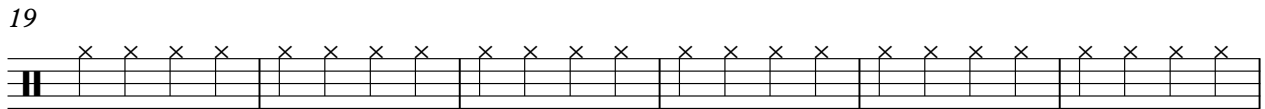
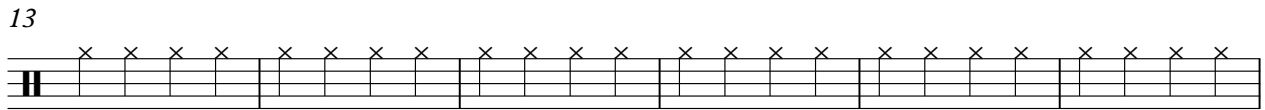
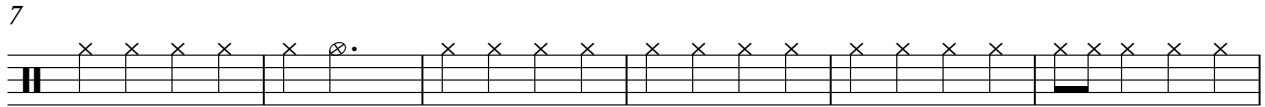


113

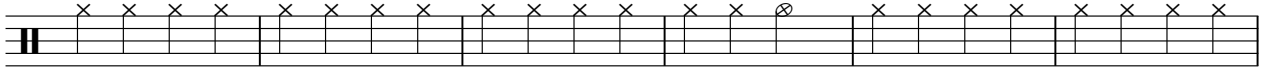


17

♩ = 126,000130



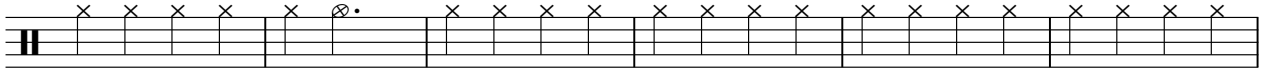
41



47



53



59



65



71



77



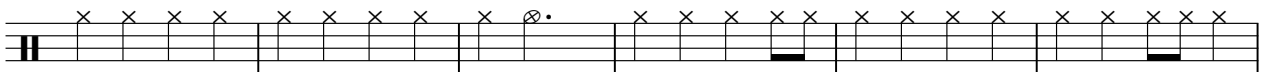
83



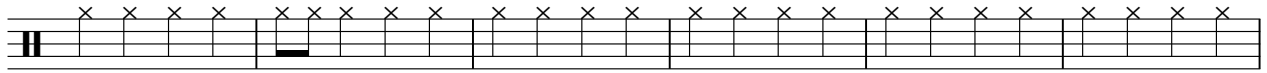
88



94



100



106



112



115



♩ = 126,000130

17 7

28

15 9

55

15 15

86

47

Tom-toms

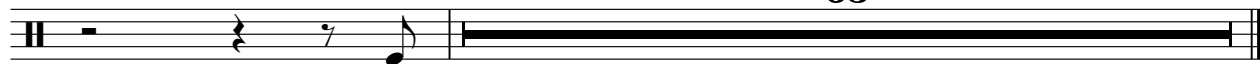
Meatloaf - You Took The Word Right Out Of My Mouth

♩ = 126,000130

53 **15**



70 **63**



Steel String

Meatloaf - You Took The Word Right Out Of My Mouth

♩ = 126,000130

6

11

16

21

26

31

35

2

41

46

51

56

61

66

71

76

81

86

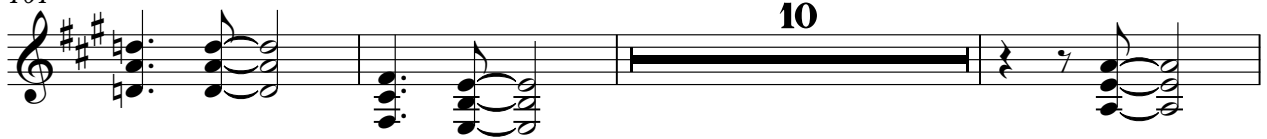
91



96



101



10

114



17

♩ = 126,000130

7

12 4

20

25 36

64 6

74

78 54

Meatloaf - You Took The Word Right Out Of My Mouth

Distortion

♩ = 126,000130

7

17

24

29

49

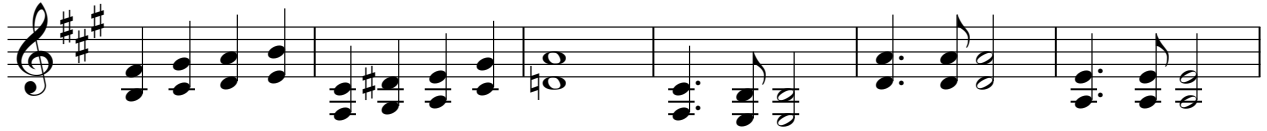
55

61

71

78

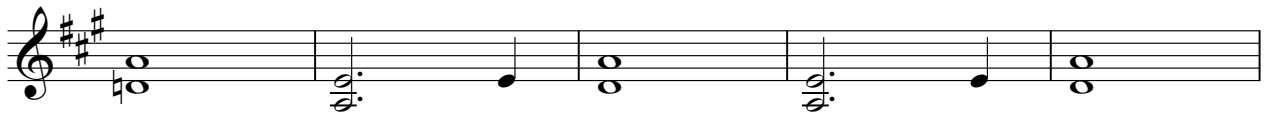
89



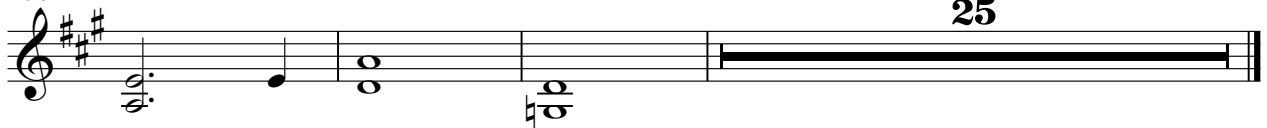
95



101



106



♩ = 126,000130



6



12



17



23



28



34



39



44



49



V.S.

55



60



65



70



75



80



85



90



96



101



106



112



118



123



128



Tango Accord

Meatloaf - You Took The Word Right Out Of My Mouth

♩ = 126,000130

7

11

15

20

24

28

33

36

Musical score for "Tango Accord" in G major (one sharp), measures 40-80. The score is written in treble clef and consists of ten staves of music. The key signature is G major (one sharp). The melody features a mix of eighth and sixteenth notes, often beamed together, with some measures containing rests. The piece concludes with a final measure at measure 80.

40

45

50

55

59

63

67

71

76

80

85

89

94

99

104

108

112

117

121

125



♩ = 126,000130

4 10

19

26

36

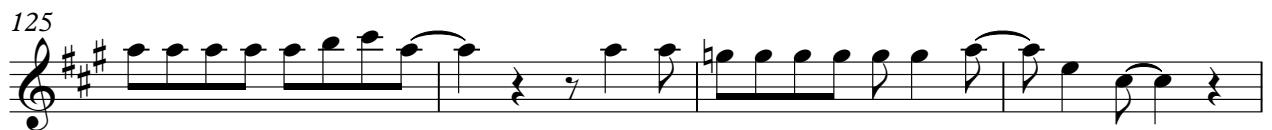
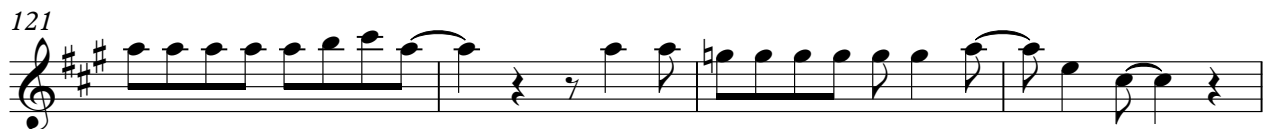
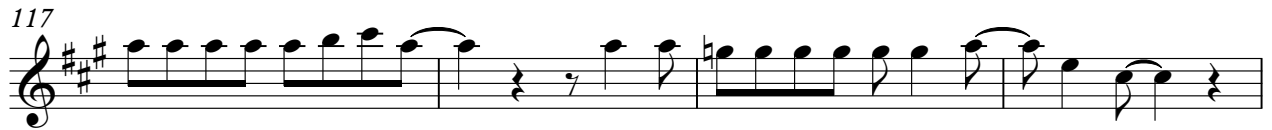
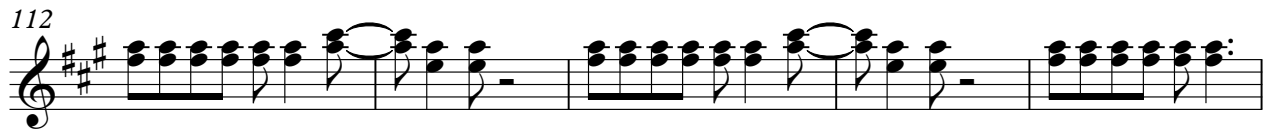
54

63

92

96

Synth Charang



String Ensemble 1

Meatloaf - You Took The Word Right Out Of My Mouth

♩ = 126,000130
25

29

7 12

51

2 11

67

71

76

80

11

94

2 11

2

String Ensembl

109

114

119

123

127

130

♩ = 126,000130

5

10

15

19

23

27

31

35

2

41



45



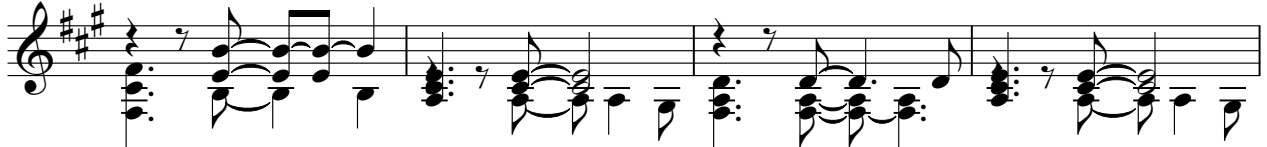
50



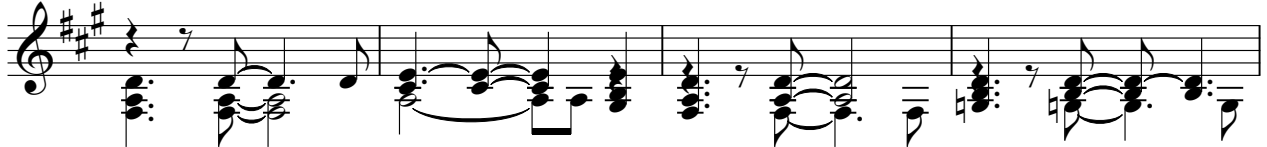
55



60



64



68



73



77



82



87

92

97

102

10

115

17