

control track

♩ = 128,000000

Viola

Viola

Vla.

Vla.

Vla.

Vla.

Vla.

Vla.

Vla.

Vla.

12

Vla. Vla.

This system contains measures 12, 13, and 14. The top staff is for the Violin (Vla.) and the bottom staff is for the Viola (Vla.). Both parts are in 3/8 time with a key signature of one sharp (F#). Measure 12 features a complex rhythmic pattern with eighth and sixteenth notes. Measure 13 has a more melodic line with some rests. Measure 14 continues the melodic development with a final note marked with a sharp sign.

15

Vla. Vla.

This system contains measures 15, 16, and 17. The top staff (Violin) has a melodic line with eighth notes and rests. The bottom staff (Viola) provides a rhythmic accompaniment with eighth notes and rests. Measure 17 ends with a sharp sign on the final note.

18

Vla. Vla.

This system contains measures 18, 19, and 20. The top staff (Violin) has a melodic line with eighth notes and rests. The bottom staff (Viola) has a rhythmic accompaniment with eighth notes and rests. Measure 19 includes a fermata over a note.

20

Vla. Vla.

This system contains measures 20, 21, and 22. The top staff (Violin) has a melodic line with eighth notes and rests. The bottom staff (Viola) has a rhythmic accompaniment with eighth notes and rests. Measure 21 includes a fermata over a note.

22

Vla. Vla.

This system contains measures 22, 23, and 24. The top staff (Violin) has a melodic line with eighth notes and rests. The bottom staff (Viola) has a rhythmic accompaniment with eighth notes and rests. Measure 23 includes a fermata over a note. Measure 24 features a triplet of eighth notes in the top staff.

24

Vla. Vla.

This system contains measures 24, 25, and 26. The top staff (Violin) has a melodic line with eighth notes and rests. The bottom staff (Viola) has a rhythmic accompaniment with eighth notes and rests. Measure 25 includes a fermata over a note. Measure 26 features a triplet of eighth notes in the top staff.

26

Vla. *Vla.*

This system contains measures 26 and 27. The top staff (Vla.) features a melodic line with eighth-note patterns. The bottom staff (Vla.) provides a rhythmic accompaniment with eighth-note patterns and rests.

28

Vla. *Vla.*

This system contains measures 28 and 29. The top staff (Vla.) has a melodic line with a triplet of eighth notes in measure 29. The bottom staff (Vla.) continues the accompaniment with eighth-note patterns.

30

Vla. *Vla.*

This system contains measures 30 and 31. The top staff (Vla.) features a melodic line with sixteenth-note patterns and a triplet of eighth notes. The bottom staff (Vla.) has a complex accompaniment with sixteenth-note patterns and triplets.

32

Vla. *Vla.*

This system contains measures 32 and 33. The top staff (Vla.) has a melodic line with eighth-note patterns. The bottom staff (Vla.) features a complex accompaniment with sixteenth-note patterns and a triplet.

34

Vla. *Vla.*

This system contains measures 34 and 35. The top staff (Vla.) has a melodic line with eighth-note patterns. The bottom staff (Vla.) features a complex accompaniment with sixteenth-note patterns and rests.

2

Viola

28

Musical notation for Viola, measures 28-30. The key signature is one sharp (F#) and the time signature is 3/8. Measure 28 starts with a quarter note on G4, followed by eighth notes on A4, B4, and C5. Measure 29 contains two triplet eighth notes: G4-A4-B4 and A4-B4-C5. Measure 30 features a sextuplet eighth note on G4, followed by a triplet eighth note on A4, and ends with a quarter note on B4.

31

Musical notation for Viola, measures 31-32. The key signature is one sharp (F#) and the time signature is 3/8. Measure 31 begins with a sextuplet eighth note on G4, followed by a triplet eighth note on A4, and continues with eighth notes on B4, C5, B4, A4, and G4. Measure 32 consists of eighth notes on F#4, G4, A4, B4, and C5, followed by a quarter note on B4.

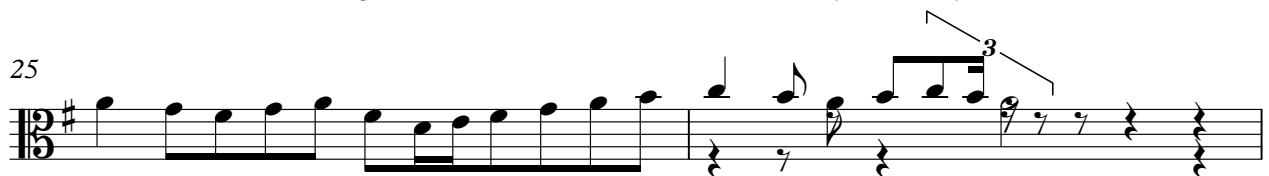
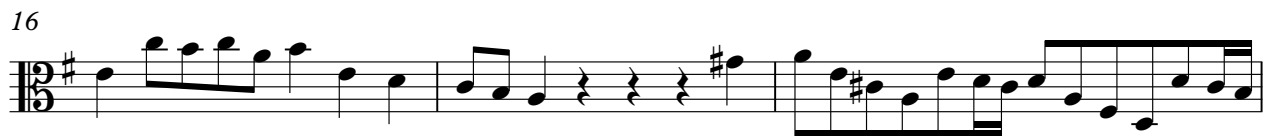
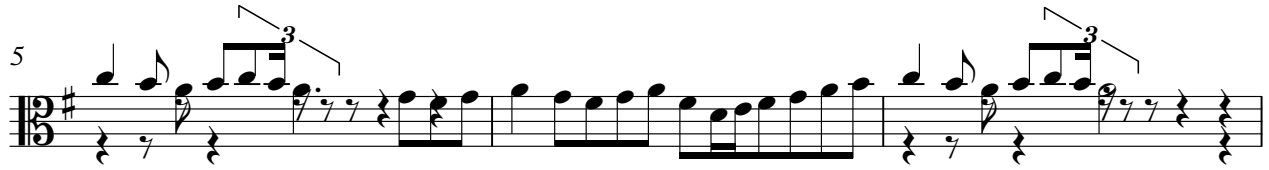
33

Musical notation for Viola, measures 33-35. The key signature is one sharp (F#) and the time signature is 3/8. Measure 33 contains a sextuplet eighth note on G4, followed by eighth notes on A4, B4, C5, B4, A4, and G4. Measure 34 has a quarter note on G4, followed by a quarter rest. Measure 35 has a quarter rest.

control track

Viola

♩ = 128,000000



V.S.

2

Viola

29

Musical notation for Viola, measures 29-31. The staff is in bass clef with a key signature of one sharp (F#). Measure 29 contains a dotted quarter note followed by eighth notes. Measure 30 features two triplet markings over eighth notes. Measure 31 has a sextuplet followed by a triplet of eighth notes.

32

Musical notation for Viola, measures 32-33. The staff is in bass clef with a key signature of one sharp (F#). Measure 32 contains a sextuplet followed by a triplet of eighth notes. Measure 33 contains eighth notes.

34

Musical notation for Viola, measure 34. The staff is in bass clef with a key signature of one sharp (F#). The measure contains a series of eighth notes followed by a quarter rest.