

Searchers - Love Potion No. 9

♩ = 120,000000

Drums

Melody

Acous Bass

Choir Ahhs

♩ = 120,000000

Space Voice

4

Drums

Melody

Acous Bass

Choir Ahhs

Space Voice

7

Drums

Melody

Acous Bass

Choir Ahhs

Space Voice

Detailed description: This system covers measures 7 and 8. The Drums part features a consistent pattern of snare and hi-hat hits. The Melody part consists of eighth and quarter notes. The Acous Bass part has a simple line of notes. The Choir Ahhs part uses sustained chords. The Space Voice part has a few notes in measure 7 and a sustained chord in measure 8.

9

Drums

Melody

Acous Bass

Choir Ahhs

Space Voice

Detailed description: This system covers measures 9 and 10. The Drums part has a more complex pattern with some triplets. The Melody part includes a triplet of eighth notes in measure 9. The Acous Bass part has a few notes. The Choir Ahhs part features a triplet of eighth notes in measure 10. The Space Voice part has a sustained chord in measure 9 and a long, sustained chord in measure 10.

11

Drums

Melody

Acous Bass

Choir Ahhs

Solo Vox

Space Voice

Detailed description: This system of musical notation covers measures 11, 12, and 13. The Drums part features a consistent rhythmic pattern of eighth notes with accents. The Melody part begins with a rest in measure 11, followed by a sequence of eighth notes in measure 12 and a half note in measure 13. The Acous Bass part has a half note in measure 11, a half note in measure 12, and a half note in measure 13. The Choir Ahhs part starts with a triplet of eighth notes in measure 11, followed by chords in measures 12 and 13. The Solo Vox part has rests in measures 11 and 12, and chords in measure 13. The Space Voice part has a chord in measure 11 and rests in measures 12 and 13.

14

Drums

Melody

Acous Bass

Choir Ahhs

Solo Vox

Detailed description: This system of musical notation covers measures 14, 15, and 16. The Drums part continues with the same eighth-note rhythmic pattern. The Melody part has eighth notes in measure 14, a half note in measure 15, and eighth notes in measure 16. The Acous Bass part has a half note in measure 14, a half note in measure 15, and a half note in measure 16. The Choir Ahhs part has chords in measure 14, a chord in measure 15, and a long sustained chord in measure 16. The Solo Vox part has chords in measure 14, a chord in measure 15, and chords in measure 16.

17

Drums

Melody

Acous Bass

Choir Ahhs

Solo Vox

Detailed description: This system covers measures 17 and 18. The Drums part features a consistent pattern of eighth notes with 'x' marks, indicating cymbal hits. The Melody part consists of eighth and quarter notes. The Acous Bass part has a simple line of notes. The Choir Ahhs part shows a sustained chord in the second measure. The Solo Vox part begins with a 7-measure rest in the first measure, followed by a sustained chord in the second measure.

19

Drums

Melody

Acous Bass

Choir Ahhs

Solo Vox

Detailed description: This system covers measures 19 and 20. The Drums part includes a triplet of eighth notes in the first measure of measure 19. The Melody part features a triplet of eighth notes in the first measure of measure 19. The Acous Bass part has a few notes in measure 20. The Choir Ahhs part has a sustained chord in measure 20. The Solo Vox part has a triplet of eighth notes in measure 19 and a 7-measure rest in measure 20.

21

Drums

Melody

Acous Bass

Choir Ahhs

Solo Vox

Space Voice

24

Drums

Melody

Acous Bass

Solo Vox

Space Voice

27

Drums

Melody

Acous Bass

Solo Vox

Space Voice

Detailed description: This system covers measures 27 and 28. The Drums part features a complex pattern with various note values and rests. The Melody part has a treble clef and includes sixteenth-note runs with '6' markings. The Acous Bass part is in a bass clef with a few notes and rests. The Solo Vox part has a treble clef and contains some notes with rests. The Space Voice part has a treble clef and shows a sustained chord with a slur.

29

Drums

Melody

Acous Bass

Choir Ahhs

Solo Vox

Space Voice

Detailed description: This system covers measures 29 and 30. The Drums part continues with a similar pattern to the previous system. The Melody part has a treble clef and includes triplet markings ('3'). The Acous Bass part is in a bass clef with several notes. The Choir Ahhs part has a treble clef and shows a sustained chord. The Solo Vox part has a treble clef and contains some notes with rests. The Space Voice part has a treble clef and shows a sustained chord.

31

Drums

Melody

Acous Bass

Choir Ahhs

Solo Vox

34

Drums

Melody

Acous Bass

Choir Ahhs

Solo Vox

37

Drums

Melody

Acous Bass

Choir Ahhs

Solo Vox

Detailed description: This system covers measures 37 and 38. The Drums part features a complex rhythmic pattern with various drum sounds. The Melody part has a treble clef and includes two sixteenth-note sextuplets, each marked with a '6'. The Acous Bass part is in a bass clef and shows a simple bass line. The Choir Ahhs part consists of sustained chords in the treble clef. The Solo Vox part is in a treble clef and features a triplet of eighth notes in measure 38, marked with a '3'.

39

Drums

Melody

Acous Bass

Choir Ahhs

Solo Vox

Space Voice

Detailed description: This system covers measures 39 and 40. The Drums part continues with a consistent rhythmic pattern. The Melody part is in a treble clef and features a steady eighth-note melody. The Acous Bass part is in a bass clef and follows a similar eighth-note pattern. The Choir Ahhs part has sustained chords in the treble clef. The Solo Vox part is in a treble clef and includes a triplet of eighth notes in measure 39, marked with a '3'. The Space Voice part is in a treble clef and features a sparse, atmospheric melody.

42

Drums

Melody

Acous Bass

Choir Ahhs

Space Voice

45

Drums

Melody

Acous Bass

Choir Ahhs

Space Voice

47

Drums

Melody

Acous Bass

Choir Ahhs

Space Voice

Detailed description: This system contains measures 47 and 48. The Drums part features a complex rhythmic pattern with various drum sounds indicated by 'x' marks. The Melody part starts with a triplet of eighth notes, followed by a quarter note and a half note, then a quarter rest, and continues with eighth notes. The Acous Bass part has a quarter note, a quarter rest, a quarter note, and a half note. The Choir Ahhs part consists of two chords. The Space Voice part has a whole rest in measure 47 and a chord in measure 48.

49

Drums

Melody

Acous Bass

Choir Ahhs

Space Voice

Detailed description: This system contains measures 49 and 50. The Drums part continues with a similar rhythmic pattern. The Melody part has a quarter note, a quarter note, a quarter note, a quarter rest, and then eighth notes. The Acous Bass part has a quarter note, a quarter note, a quarter note, a quarter note, a quarter note, and a quarter note. The Choir Ahhs part has two chords. The Space Voice part has a chord in measure 49 and a chord in measure 50.

52

Drums

Melody

Acous Bass

Choir Ahhs

Space Voice

55

Drums

Melody

Acous Bass

Choir Ahhs

Space Voice

57

Drums

Melody

Acous Bass

Choir Ahhs

Space Voice

60

Drums

Melody

Acous Bass

Choir Ahhs

Space Voice

63

Drums

Drum notation for measures 63 and 64. The notation uses a standard drum set layout with triangles for snare and cymbals, and 'x' marks for hi-hats. The rhythm is consistent across both measures.

Melody

Melody notation for measures 63 and 64 in treble clef. Measure 63 starts with a quarter rest, followed by a quarter note G4, an eighth note F4, and an eighth note E4. Measure 64 contains a quarter note D4, a quarter note C4, a quarter note B3, and a quarter note A3.

Acous Bass

Acoustic Bass notation for measures 63 and 64 in bass clef. Measure 63 contains a half note G2, and measure 64 contains a half note F2.

Choir Ahhs

Choir Ahhs notation for measures 63 and 64 in treble clef. Measure 63 features a whole note chord of G4, A4, and B4. Measure 64 features a whole note chord of G3, A3, and B3.

Space Voice

Space Voice notation for measures 63 and 64 in treble clef. Measure 63 features a whole note chord of G4, A4, and B4. Measure 64 features a whole note chord of G3, A3, and B3.

Searchers - Love Potion No. 9

Drums

$\text{♩} = 120,000000$

5

9

12

15

18

21

25

28

30

V.S.

33

36

39

43

46

48

52

55

58

62

Searchers - Love Potion No. 9

Melody

♩ = 120,000000

6

12

16

21

26

30

34

36

2

Melody

40



44



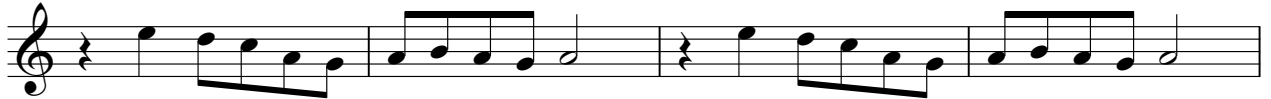
48



52



57



61



Searchers - Love Potion No. 9

Acous Bass

♩ = 120,000000

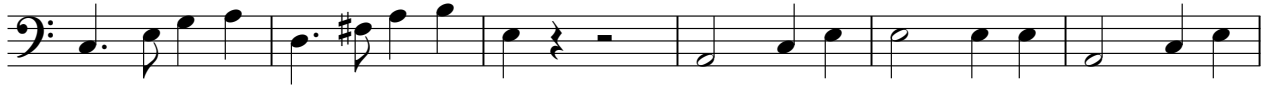


V.S.

2

Acous Bass

53



59



Choir Ahhs

Searchers - Love Potion No. 9

♩ = 120,000000

8

13

22

37

46

53

58

Solo Vox

Searchers - Love Potion No. 9

♩ = 120,000000

11

17

22

27

33

38

25

Searchers - Love Potion No. 9

Space Voice

♩ = 120,000000

10

10

27

10

42

48

57

61

Detailed description: The score is written in 4/4 time with a tempo of 120,000000. It consists of seven staves of music. The first staff (measures 1-9) begins with a whole rest, followed by a series of complex chords and a melodic line. The second staff (measures 10-19) features a ten-measure rest followed by complex chords. The third staff (measures 20-29) also has a ten-measure rest followed by a melodic line. The fourth staff (measures 30-41) continues the melodic line. The fifth staff (measures 42-47) shows a melodic line with some rests. The sixth staff (measures 48-56) returns to complex chords. The seventh staff (measures 57-60) continues with chords and rests. The eighth staff (measures 61-64) concludes with chords and rests.