



Richard Kearns

Arranger, Composer, Publisher, Teacher

Ireland, Ballybofey, Donegal

About the artist

Due to loss of use of hands I will be unable to transpose, arrange or otherwise modify my music in here. Further compositions will be very very slow in appearing here.....Thanks for all the support.

Teachers and students may use my music and arrangements to study and practice without further adieu.....All public performances must give me credit for arrangements and composition...

THANKS FOR THE DONATIONS.
They keep me going.

About the piece



Title: Andante [No. 2]
Composer: Telemann, Georg Philipp
Arranger: Kearns, Richard
Licence: Richard Kearns © All rights reserved
Publisher: Kearns, Richard
Instrumentation: 3 flutes
Style: Baroque

Richard Kearns on [free-scores.com](http://www.free-scores.com)

<http://www.free-scores.com/Download-PDF-Sheet-Music-guiriel.htm>

- Donate / Financial compensation
- Download other works by this artist
- Listen to his pieces
- Contact the artist
- Write feedback comments
- Share your mp3 recording of this piece




This work is not Public Domain. You must contact the artist for any use outside the private area.

Andante 2

Trio for Flutes

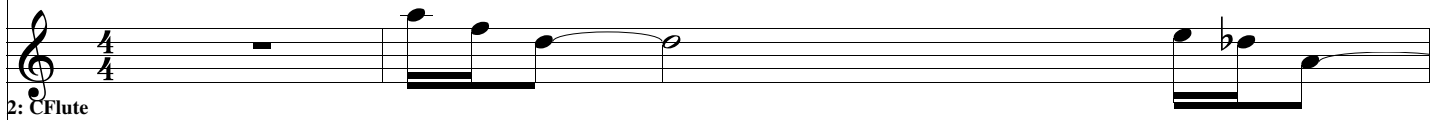
Telemann
Arrangement Richard Kearns © 2010

1



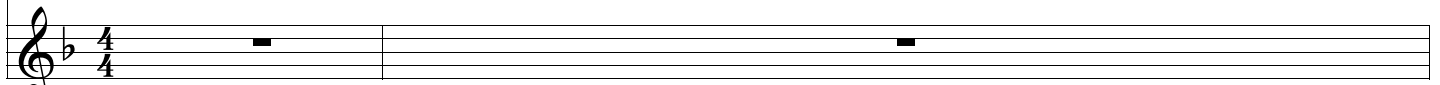
1: CFlute

Musical staff for Flute 1, 4/4 time signature. The staff contains a whole rest in the first measure, followed by a quarter rest, then a quarter note G4, quarter note A4, quarter note B4, quarter note C5, quarter note B4, quarter note A4, quarter note G4, and a quarter rest.



2: CFlute

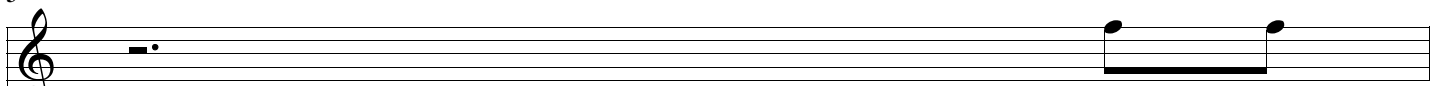
Musical staff for Flute 2, 4/4 time signature. The staff contains a whole rest in the first measure, followed by a quarter note G4, quarter note A4, quarter note B4, quarter note C5, quarter note B4, quarter note A4, quarter note G4, and a quarter rest.



3: AFlute

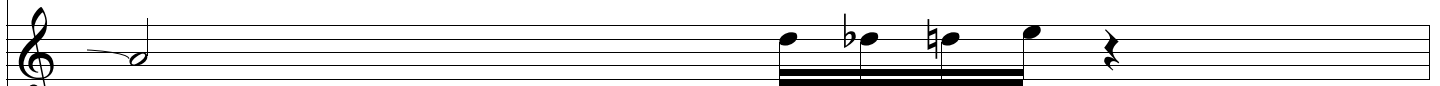
Musical staff for Flute 3, 4/4 time signature. The staff contains a whole rest in the first measure, followed by a whole rest in the second measure.

3



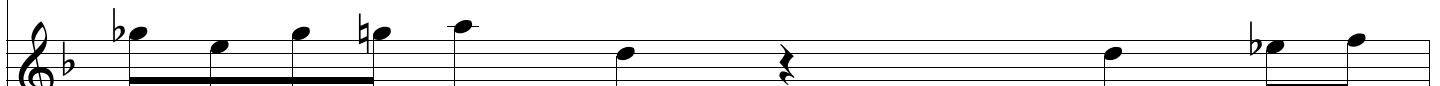
1: CFlute

Musical staff for Flute 1, 4/4 time signature. The staff contains a whole rest in the first measure, followed by a quarter rest, then a quarter note G4, quarter note A4, quarter note B4, quarter note C5, quarter note B4, quarter note A4, quarter note G4, and a quarter rest.



2: CFlute

Musical staff for Flute 2, 4/4 time signature. The staff contains a quarter note G4, quarter note A4, quarter note B4, quarter note C5, quarter note B4, quarter note A4, quarter note G4, and a quarter rest.



3: AFlute

Musical staff for Flute 3, 4/4 time signature. The staff contains a quarter note G4, quarter note A4, quarter note B4, quarter note C5, quarter note B4, quarter note A4, quarter note G4, and a quarter rest.

4

1:
CFlute

2:
CFlute

3:
AFlute

Detailed description: This system contains measures 4, 5, and 6. The first two staves are for CFlute (treble clef) and the third is for AFlute (treble clef with a flat key signature). Measure 4 shows a rest for the CFlute parts and a quarter note for the AFlute. Measure 5 features a melodic line for the CFlutes and a half note for the AFlute. Measure 6 continues the CFlute melody and has a quarter note for the AFlute.

5

1:
CFlute

2:
CFlute

3:
AFlute

Detailed description: This system contains measures 7, 8, and 9. The notation is similar to the previous system, with CFlute parts on the first two staves and the AFlute part on the third. Measure 7 has a quarter note for CFlute and a half note for AFlute. Measure 8 features a melodic line for CFlute and a half note for AFlute. Measure 9 continues the CFlute melody and has a quarter note for AFlute.

6

1:
CFlute

2:
CFlute

3:
AFlute

Detailed description: This system contains measures 10, 11, and 12. The notation continues the piece, with CFlute parts on the first two staves and the AFlute part on the third. Measure 10 has a quarter note for CFlute and a half note for AFlute. Measure 11 features a melodic line for CFlute and a half note for AFlute. Measure 12 continues the CFlute melody and has a quarter note for AFlute.

7

Musical staff 1 for measure 7, featuring a treble clef, a key signature of one flat, and a single eighth note with a flat.

1:
CFlute

Musical staff 2 for measure 7, featuring a treble clef, a key signature of one flat, and a sequence of eighth notes.

2:
CFlute

Musical staff 3 for measure 7, featuring a treble clef, a key signature of one flat, and a sequence of eighth notes with various accidentals.

3:
AFlute

8

Musical staff 1 for measure 8, featuring a treble clef, a key signature of one flat, and a sequence of notes including a sharp.

1:
CFlute

Musical staff 2 for measure 8, featuring a treble clef, a key signature of one flat, and a sequence of notes including a flat.

2:
CFlute

Musical staff 3 for measure 8, featuring a treble clef, a key signature of one flat, and a sequence of notes including a flat.

3:
AFlute

9

Musical staff 1 for measure 9, featuring a treble clef, a key signature of one flat, and a sequence of notes including a flat.

1:
CFlute

Musical staff 2 for measure 9, featuring a treble clef, a key signature of one flat, and a sequence of notes including a flat.

2:
CFlute

Musical staff 3 for measure 9, featuring a treble clef, a key signature of one flat, and a sequence of notes including a flat.

3:
AFlute

11

1:
CFlute

2:
CFlute

3:
AFlute

Detailed description: This system contains measures 11 and 12. The first staff (1st Flute) starts with a whole rest in measure 11, then plays a quarter note G4, followed by eighth notes A4, B4, C5, B4, A4, and a whole rest in measure 12. The second staff (2nd Flute) plays eighth notes G4, A4, B4, C5, B4, A4 in measure 11, a whole rest in measure 12, then eighth notes G4, A4, B4, C5, B4, A4 in measure 13. The third staff (3rd Flute) plays eighth notes G4, A4, B4, C5, B4, A4 in measure 11, a whole rest in measure 12, then eighth notes G4, A4, B4, C5, B4, A4 in measure 13.

13

1:
CFlute

2:
CFlute

3:
AFlute

Detailed description: This system contains measures 13 and 14. The first staff (1st Flute) plays quarter notes G4, A4, B4, C5, B4, A4 in measure 13, then quarter notes G4, A4, B4, C5, B4, A4 in measure 14. The second staff (2nd Flute) has a whole rest in both measures 13 and 14. The third staff (3rd Flute) plays quarter notes G4, A4, B4, C5, B4, A4 in measure 13, then quarter notes G4, A4, B4, C5, B4, A4 in measure 14.

14

1:
CFlute

2:
CFlute

3:
AFlute

Detailed description: This system contains measures 15 and 16. The first staff (1st Flute) has a whole rest in both measures 15 and 16. The second staff (2nd Flute) plays quarter notes G4, A4, B4, C5, B4, A4 in measure 15, then quarter notes G4, A4, B4, C5, B4, A4 in measure 16. The third staff (3rd Flute) plays quarter notes G4, A4, B4, C5, B4, A4 in measure 15, then quarter notes G4, A4, B4, C5, B4, A4 in measure 16.

15

1:
CFlute

2:
CFlute

3:
AFlute

16

1:
CFlute

2:
CFlute

3:
AFlute

17

1:
CFlute

2:
CFlute

3:
AFlute

18

1:
CFlute

2:
CFlute

3:
AFlute

19

1:
CFlute

2:
CFlute

3:
AFlute

20

1:
CFlute

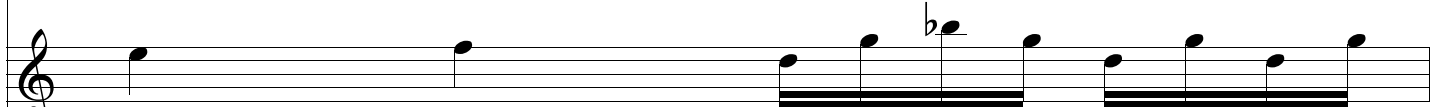
2:
CFlute

3:
AFlute

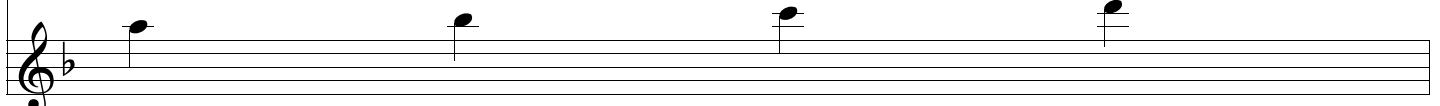
21



1:
CFlute

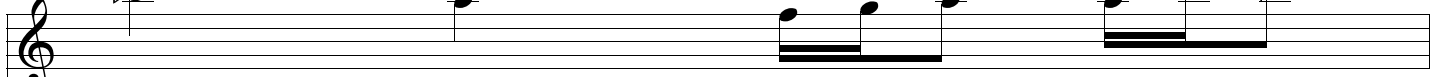


2:
CFlute

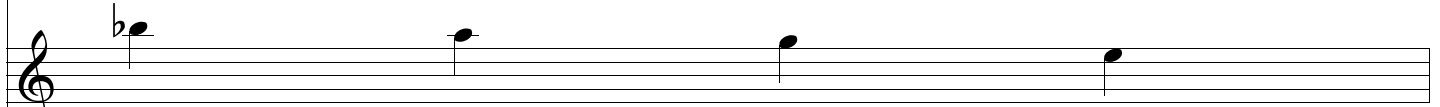


3:
AFlute

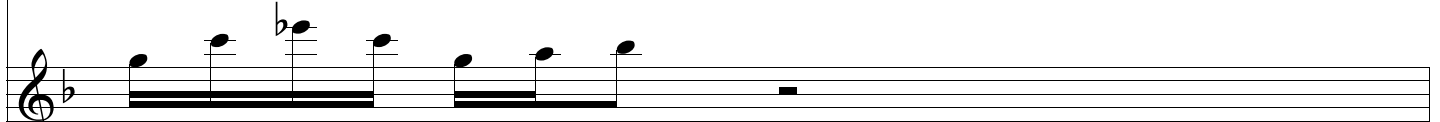
22



1:
CFlute

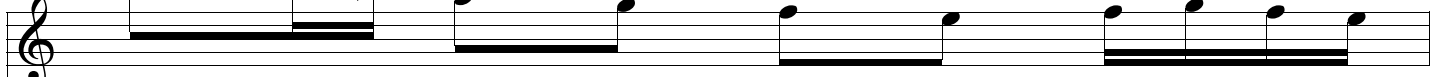


2:
CFlute

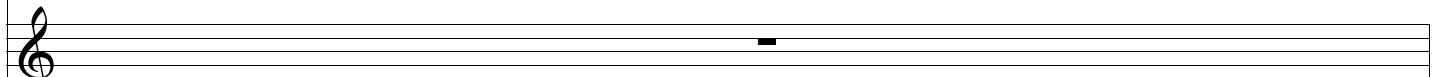


3:
AFlute

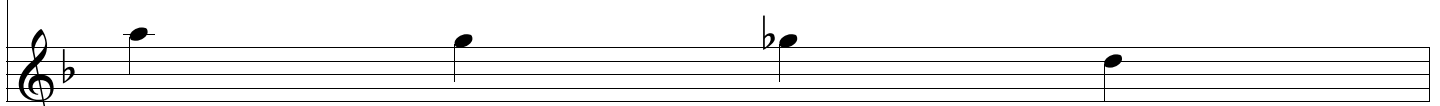
23



1:
CFlute

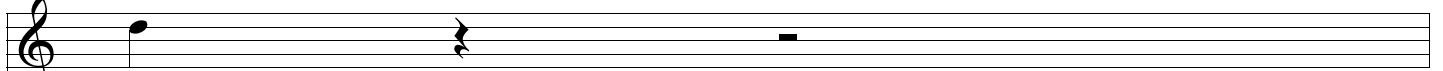
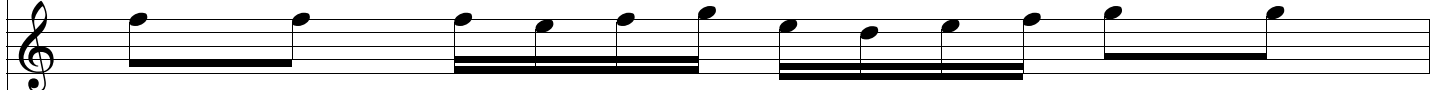
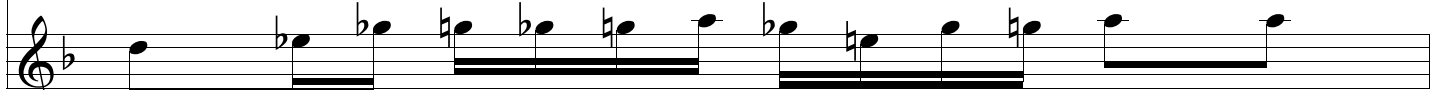


2:
CFlute

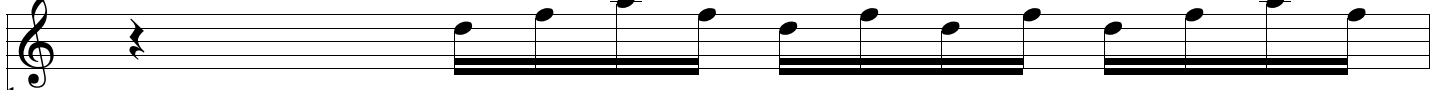
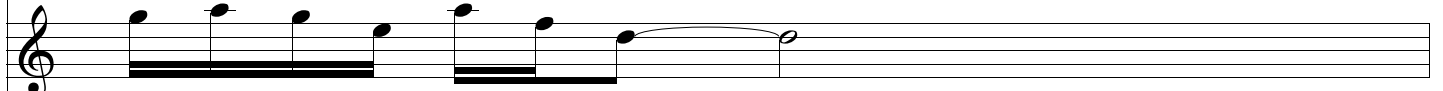
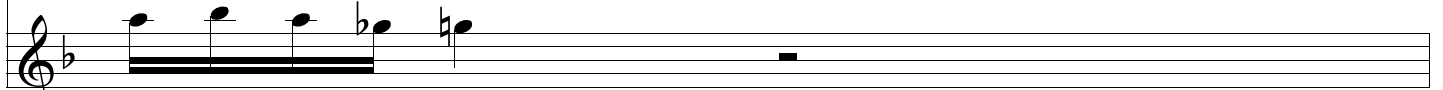


3:
AFlute

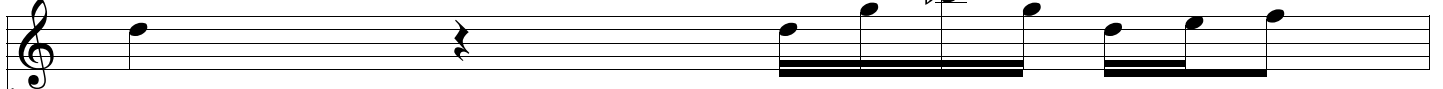
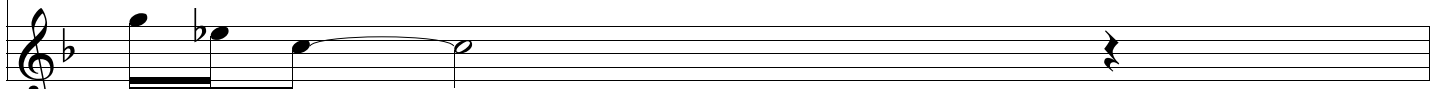
24

1:
CFlute2:
CFlute3:
AFlute

25

1:
CFlute2:
CFlute3:
AFlute

26

1:
CFlute2:
CFlute3:
AFlute

27

Musical staff 1 for measure 27. It features a treble clef and a key signature of one flat. The melody consists of quarter notes: G4, A4, Bb4, C5, Bb4, A4, G4. A slur covers the notes Bb4, C5, and Bb4.

1:
CFlute

Musical staff 2 for measure 27. It features a treble clef and a key signature of one flat. The staff contains a whole rest.

2:
CFlute

Musical staff 3 for measure 27. It features a treble clef and a key signature of one flat. The staff contains a whole rest.

3:
AFlute

28

Musical staff 1 for measure 28. It features a treble clef and a key signature of one flat. The melody consists of quarter notes: G4, A4, Bb4, C5, Bb4, A4, G4. A slur covers the notes Bb4, C5, and Bb4.

1:
CFlute

Musical staff 2 for measure 28. It features a treble clef and a key signature of one flat. The staff contains a whole rest.

2:
CFlute

Musical staff 3 for measure 28. It features a treble clef and a key signature of one flat. The staff contains a whole rest.

3:
AFlute

29

Musical staff 1 for measure 29. It features a treble clef and a key signature of one flat. The melody consists of quarter notes: G4, A4, Bb4, C5, Bb4, A4, G4. A slur covers the notes Bb4, C5, and Bb4.

1:
CFlute

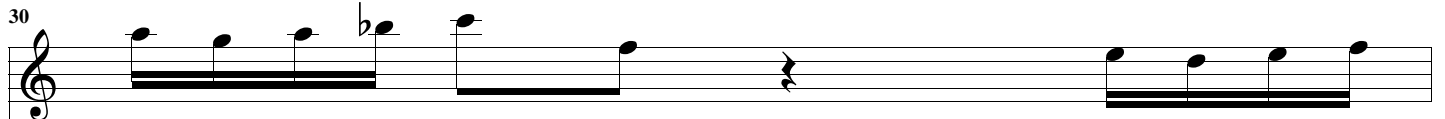
Musical staff 2 for measure 29. It features a treble clef and a key signature of one flat. The staff contains a whole rest followed by a quarter note G4, a quarter note A4, and a quarter note Bb4.

2:
CFlute

Musical staff 3 for measure 29. It features a treble clef and a key signature of one flat. The staff contains a whole rest.

3:
AFlute

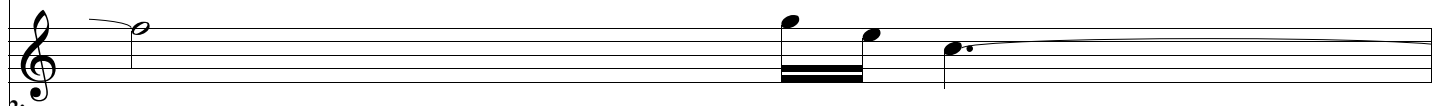
30



1: CFlute

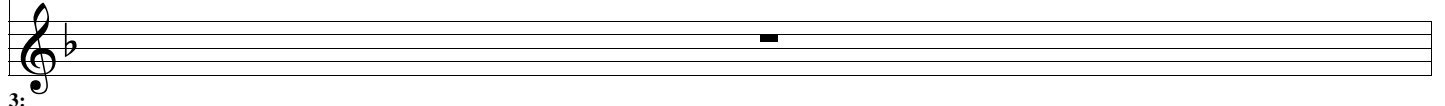
Detailed description: This is the first staff of music for measure 30, written for the first C flute. It begins with a treble clef and a key signature of one flat. The melody consists of quarter notes: G4, A4, Bb4, and C5. There is a fermata over the Bb4 note. The staff continues with a whole rest, followed by a quarter rest, and then another quarter note G4.

1: CFlute



Detailed description: This is the second staff of music for measure 30, written for the second C flute. It begins with a treble clef and a key signature of one flat. The melody consists of quarter notes: G4, A4, and Bb4. There is a fermata over the Bb4 note. The staff continues with a whole rest, followed by a quarter rest, and then another quarter note G4.

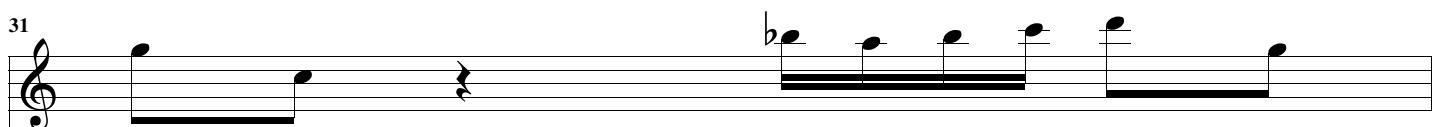
2: CFlute



Detailed description: This is the third staff of music for measure 30, written for the A flute. It begins with a treble clef and a key signature of one flat. The staff contains a whole rest for the entire measure.

3: AFlute

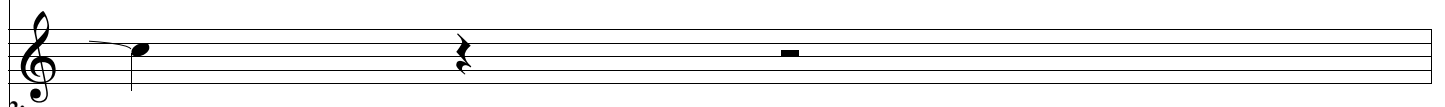
31



1: CFlute

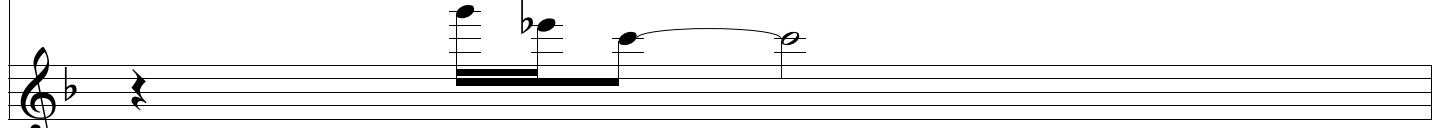
Detailed description: This is the first staff of music for measure 31, written for the first C flute. It begins with a treble clef and a key signature of one flat. The melody consists of quarter notes: G4, A4, Bb4, C5, Bb4, A4, and G4. There is a fermata over the Bb4 note. The staff continues with a whole rest, followed by a quarter rest, and then another quarter note G4.

1: CFlute



Detailed description: This is the second staff of music for measure 31, written for the second C flute. It begins with a treble clef and a key signature of one flat. The melody consists of quarter notes: G4, A4, and Bb4. There is a fermata over the Bb4 note. The staff continues with a whole rest, followed by a quarter rest, and then another quarter note G4.

2: CFlute



Detailed description: This is the third staff of music for measure 31, written for the A flute. It begins with a treble clef and a key signature of one flat. The melody consists of quarter notes: G4, A4, Bb4, and C5. There is a fermata over the Bb4 note. The staff continues with a whole rest, followed by a quarter rest, and then another quarter note G4.

3: AFlute

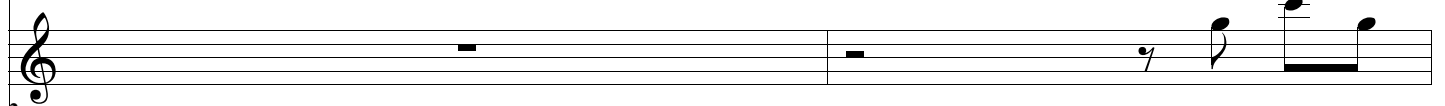
32



1: CFlute

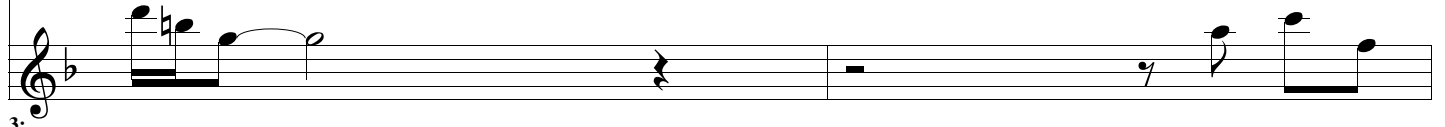
Detailed description: This is the first staff of music for measure 32, written for the first C flute. It begins with a treble clef and a key signature of one flat. The melody consists of quarter notes: G4, A4, Bb4, C5, Bb4, A4, and G4. There is a fermata over the Bb4 note. The staff continues with a whole rest, followed by a quarter rest, and then another quarter note G4.

1: CFlute



Detailed description: This is the second staff of music for measure 32, written for the second C flute. It begins with a treble clef and a key signature of one flat. The staff contains a whole rest for the first half of the measure, followed by a quarter rest, and then another quarter note G4.

2: CFlute



Detailed description: This is the third staff of music for measure 32, written for the A flute. It begins with a treble clef and a key signature of one flat. The melody consists of quarter notes: G4, A4, Bb4, and C5. There is a fermata over the Bb4 note. The staff continues with a whole rest, followed by a quarter rest, and then another quarter note G4.

3: AFlute

34

1:
CFlute

2:
CFlute

3:
AFlute

35

1:
CFlute

2:
CFlute

3:
AFlute

36

1:
CFlute

2:
CFlute

3:
AFlute

38

1:
CFlute

2:
CFlute

3:
AFlute

The image shows a musical score for three flutes, numbered 1, 2, and 3. The score is for measures 38 through 41. Flute 1 (C Flute) and Flute 2 (C Flute) are in the treble clef, while Flute 3 (A Flute) is in the bass clef. The music consists of eighth and sixteenth notes, with a final measure containing a whole note. A flat (b) is present above the first note of the final measure in all three parts.