

# Rascal Flatts - I Feel Bad

♩ = 67,000031

Drums5

Guit3

Chant1

Basse1

Strings3

♩ = 67,000031

Choeurs1

The image displays a musical score for the song "I Feel Bad" by Rascal Flatts. The score is arranged in a vertical stack of staves, each labeled with an instrument or vocal part. The tempo is marked as ♩ = 67,000031. The time signature is 2/4. The key signature has one sharp (F#). The parts include: Drums5 (drum notation), Guit3 (guitar notation), Chant1 (chant/vocal line), Basse1 (bass line), Strings3 (string accompaniment), and Choeurs1 (choir/vocal line). The score shows the first four measures of the piece.

2

5

Drums5  
Guit3  
Chant1  
Basse1  
Strings3  
Choeurs1

This musical score covers measures 2 through 5. The Drums5 part features a consistent rhythmic pattern of eighth notes with occasional accents. The Guit3 part includes a melodic line with a triplet in measure 3 and a sustained chord in measure 5. The Chant1 part has a vocal line with a triplet in measure 3. The Basse1 part provides a simple bass line. The Strings3 part consists of sustained chords. The Choeurs1 part has a vocal line with a triplet in measure 3.

8

Drums5  
Guit3  
Chant1  
Basse1  
Strings3  
Choeurs1

This musical score covers measures 8 through 11. The Drums5 part continues with its rhythmic pattern. The Guit3 part features a melodic line with a triplet in measure 9 and a sustained chord in measure 11. The Chant1 part has a vocal line with a triplet in measure 9. The Basse1 part provides a simple bass line. The Strings3 part consists of sustained chords. The Choeurs1 part has a vocal line with a triplet in measure 9.

Drums5

Rascal Flatts - I Feel Bad

♩ = 67,000031

Musical notation for the first five measures of the drum part. It features a 2/4 time signature and a key signature of one flat. The notation includes quarter notes, eighth notes, and sixteenth notes, with asterisks indicating specific drum sounds. The first measure starts with a double bar line and a fermata-like symbol.

6

Musical notation for measures 6 through 10 of the drum part. It continues the 2/4 time signature and one flat key signature. The notation includes quarter notes, eighth notes, and sixteenth notes, with asterisks indicating specific drum sounds. The piece ends with a double bar line and a fermata-like symbol.



Chant1

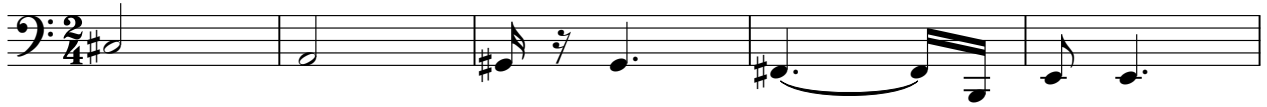
Rascal Flatts - I Feel Bad

♩ = 67,000031

The first staff of music is written in treble clef with a 2/4 time signature. It begins with a quarter rest, followed by a series of eighth notes: G4, A4, B4, C5, B4, A4, G4. This sequence is repeated five times across six measures. The first measure contains a quarter rest followed by the eighth-note sequence. The second through fifth measures each contain the eighth-note sequence. The sixth measure contains the eighth-note sequence followed by a quarter rest. A triplet bracket is positioned below the eighth notes in the fifth measure.

The second staff of music continues the melody. It starts with a quarter rest, followed by eighth notes G4, A4, B4, C5, B4, A4, G4. This sequence is repeated five times across six measures. The first measure contains a quarter rest followed by the eighth-note sequence. The second through fifth measures each contain the eighth-note sequence. The sixth measure contains the eighth-note sequence followed by a quarter rest. A triplet bracket is positioned above the eighth notes in the first measure of this staff.

♩ = 67,000031



6



Strings3

Rascal Flatts - I Feel Bad

♩ = 67,000031

The musical notation is written on a single staff in 2/4 time. It begins with a treble clef and a key signature of one sharp (F#). The tempo is indicated as ♩ = 67,000031. The piece starts with a whole rest in the first measure. The following measures contain chords: the second measure has a D4 chord; the third and fourth measures have E4 chords with a sharp sign above the note; the fifth measure has a D4 chord; the sixth and seventh measures have E4 chords with a sharp sign above the note; the eighth measure has a D4 chord. The final section of the score consists of several measures of chords, including D4, E4, and F#4 chords, with some notes marked with sharp signs.

Choeurs1

Rascal Flatts - I Feel Bad

♩ = 67,000031

Musical notation for the first chorus of 'I Feel Bad' by Rascal Flatts. It consists of a single staff in 2/4 time with a treble clef. The melody starts with a whole rest, followed by a quarter note G4, an eighth note A4, a quarter note B4, and a quarter note C5. This pattern repeats three times, followed by another whole rest, and then the pattern repeats once more.

7

Musical notation for the second chorus of 'I Feel Bad' by Rascal Flatts. It consists of a single staff in 2/4 time with a treble clef. The melody starts with a quarter note G4, an eighth note A4, a quarter note B4, and a quarter note C5. This is followed by a quarter note G4, an eighth note A4, a quarter note B4, and a quarter note C5. Then there is a whole rest, followed by a quarter note G4, an eighth note A4, a quarter note B4, and a quarter note C5. The piece ends with a double bar line.