

# T - Lonesome In My Saddle - Two Bad

♩ = 202,999664

This system contains the first three measures of the piece. The Drums part is in 4/4 time, starting with four quarter notes (marked with 'x') in the first measure, followed by a rest in the second measure, and a pattern of eighth notes in the third measure. The Piano part has rests in the first two measures and a chord progression in the third measure. The Acoustic Lead part has rests in the first two measures and a melodic line in the third measure. The Bass part has rests in the first two measures and a single note in the third measure.

This system contains measures 4 through 7. Measure 4 is marked with a '4' above the staff. The Lyrics part shows the words 'It's been so' starting in measure 5. The Drums part continues with a consistent eighth-note pattern. The Piano part continues with its chord progression. The Acoustic Lead part features a triplet in measure 5. The Bass part continues with its melodic line. The Harmony part has rests in the first two measures and a chord progression in the third measure.

7

Lyrics

lone some in my sad dle sincemy horse died!

Drums

Piano

Acoustic Lead

Bass

Harmony

3

Lyrics

T - Lonesome In My Saddle - Two Bad

♩ = 202,999664

**5**

It's been so lone some in my saddle since my horse died!

Drums

T - Lonesome In My Saddle - Two Bad

♩ = 202,999664

6

Piano

# T - Lonesome In My Saddle - Two Bad

♩ = 202,999664

2

6

6

Acoustic Lead

T - Lonesome In My Saddle - Two Bad

♩ = 202,999664

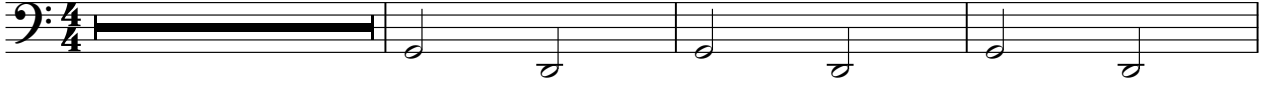
6

Bass

# T - Lonesome In My Saddle - Two Bad

♩ = 202,999664

**2**



6



Harmony

T - Lonesome In My Saddle - Two Bad

♩ = 202,999664

5

8